



Step by Step - Welshpool - south

The Montgomery Canal

Walk Distance 2.2 miles (4.4 miles return). This is a linear walk

Please use the area below to record your progress.

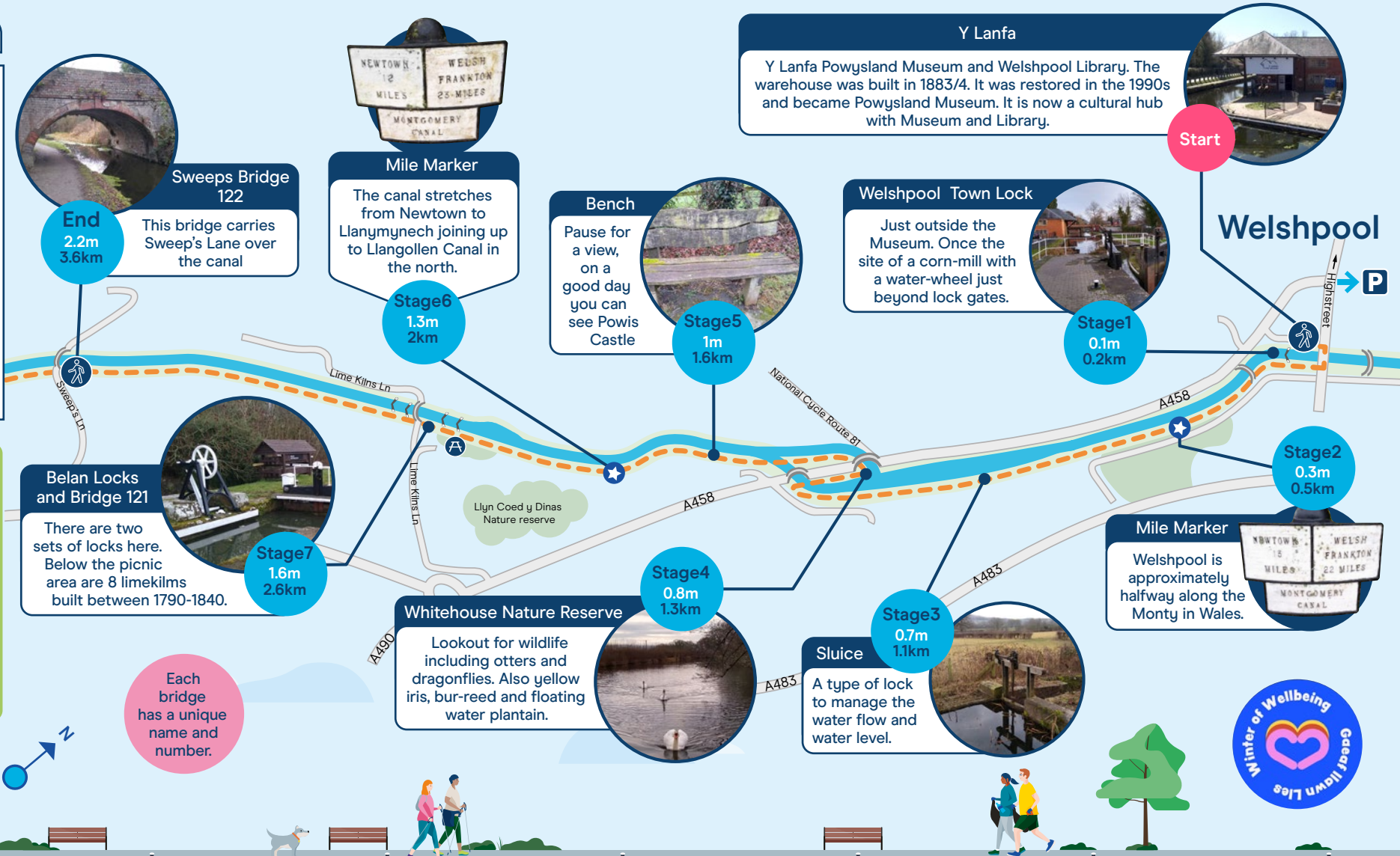
Name: _____

Date	Stage	Time

'The Monty' was constructed between the 1790s to 1830s, mainly to transport limestone from the Llanymynech quarries and coal from Chirk and Oswestry to the canalside kilns. It was abandoned and closed in 1944. Restoration began in 1969 and is still ongoing today.

Walking tips

- Walk for a longer amount of time by adding 2-3 minutes each week.
- Challenge yourself by increasing your distance each week.
- Increase the speed of your walk.



Each bridge has a unique name and number.

