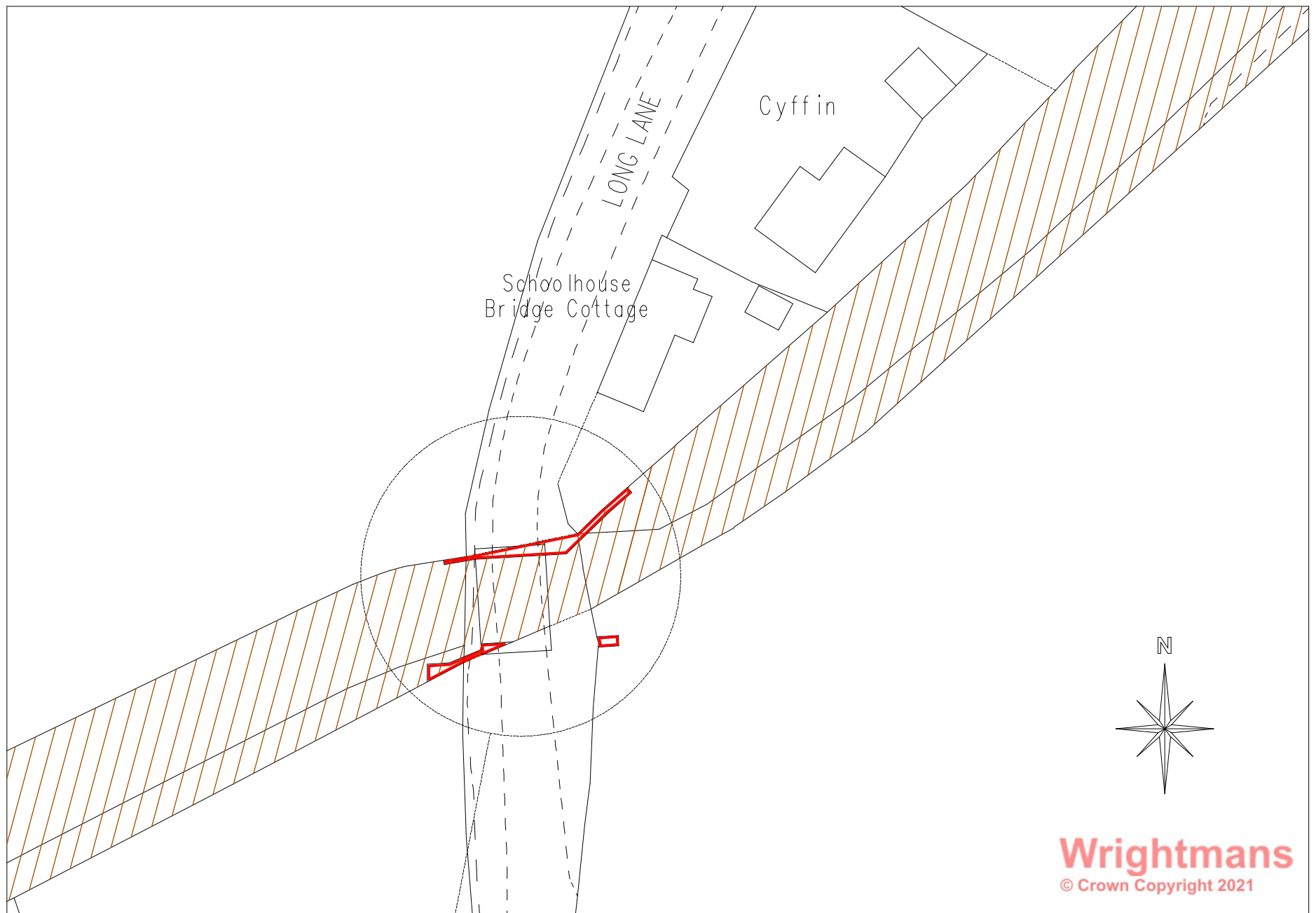


Plan of Title



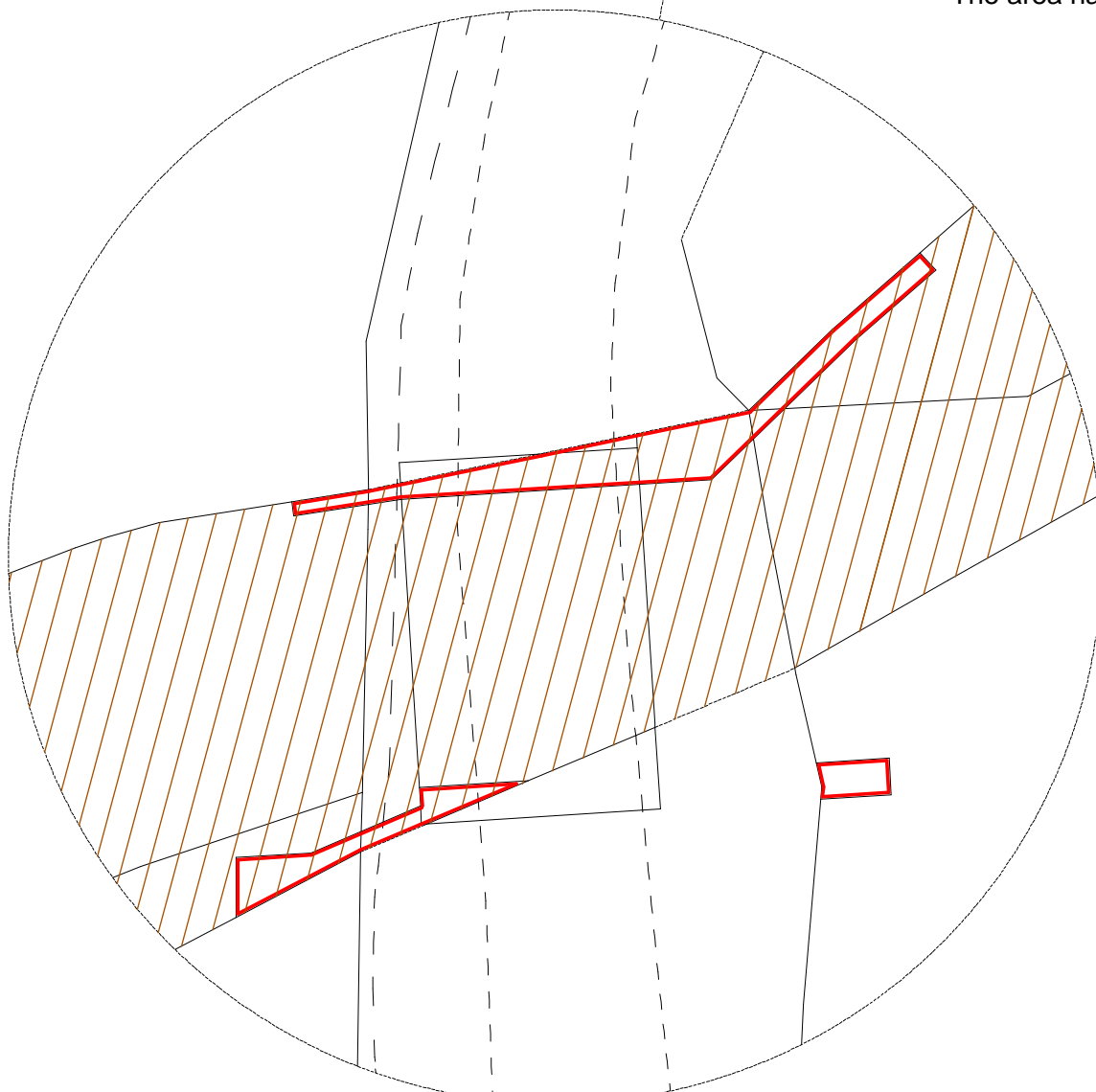
land at School House Bridge site
Long Lane, Crickheath
Near Oswestry
Shropshire SY10 8BT

Scale 1:500

NOTES

The areas edged red on the Plan indicate land removed from Title No. SL187328 as referred to in the Transfer.

The area hatched brown on the Plan indicates part of the Title No. SL187328.



Scale 1:200

SCALE IN METRES 1:500



| | |
|---|-------------------|
| DRAWING NUMBER WP7493-Plan 1 | REV 03 |
| <small>Additional copies of these Plans are available on request. We do not recommend submitting anything other than our original plans to the Land Registry as most reproductions will be rejected due to distortion and scaling inaccuracy.</small> | SIZE A3 |

Wrightmans
Land Registry Compliant Plans

Winsor & Newton Building
Whitefriars Avenue, Harrow, Middlesex HA3 5RN
DX 42570 BUSHEY

t: 0844 800 1228
info@wrightmansplans.co.uk - www.wrightmansplans.co.uk

| | | | |
|--|---------------------------|-------------------------|-------------------------|
| DRAWING TITLE Plan of Title for land at School House Bridge site Long Lane, Crickheath, Near Oswestry Shropshire SY10 8BT | | | |
| SCALE 1:200 1:500 | DATE 07/06/2021 | DRAWN BY B.K. | APPROVED E.G. |