



Canal & River Trust

Making life better by water

Discover Cosgrove & Wolverton

Cosgrove, once a bustling industrial site, is now a peaceful stretch of the Grand Union Canal. Just the place for a great family visit watching boats!



Map not to scale: covers approx 0.5 miles/0.8km

A little bit of history

In Victorian times, Cosgrove was a busy inland port. Timber, coal and stone from the Midlands were unloaded here and local farm produce was transferred onto barges bound for London. Today, it's busy with pleasure boats and families having a great day out.

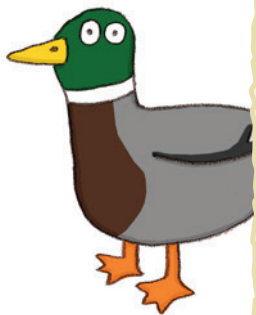
Best of all
it's FREE!*

Five things to do at Cosgrove & Wolverton

- ❑ **Check out** the awesome Iron Trunk Aqueduct that takes the Grand Union Canal across the river valley. The first brick aqueduct collapsed and was replaced by one built of cast iron.
- ❑ **Look for** the cattle creep under the aqueduct built so cattle could pass to the fields on the other side of the canal.
- ❑ **Go** to the Ornamental Bridge. When the canal was built in the 1790s, the local landowner insisted on a pretty bridge.
- ❑ **Chat to** boaters and watch boats go through the lock.
- ❑ **Look for** the route of the original lock flight built before the aqueduct, when the river was crossed on the level.

Did you know?...

Our lock gates are handbuilt by skilled carpenters in our workshops in the West Midlands and Yorkshire, from FSC Green Oak. Each one is unique and can take up to a month to make. Once built they last for about 25 years.



Go to canalriverexplorers.org.uk to discover lots of fun things to do with the family.

Information

Lock Lane, Cosgrove
MK19 7JR or
Old Wolverton Road
Wolverton MK12 5NL

- Parking
- Toilets
- Pub
- Picnic
- Trip boats
- Path
- Allow 1-2 hours for this visit

* Don't forget:

Although the site is always open the facilities and boat trips may not be and some may be chargeable. Please check with local businesses before setting out.

