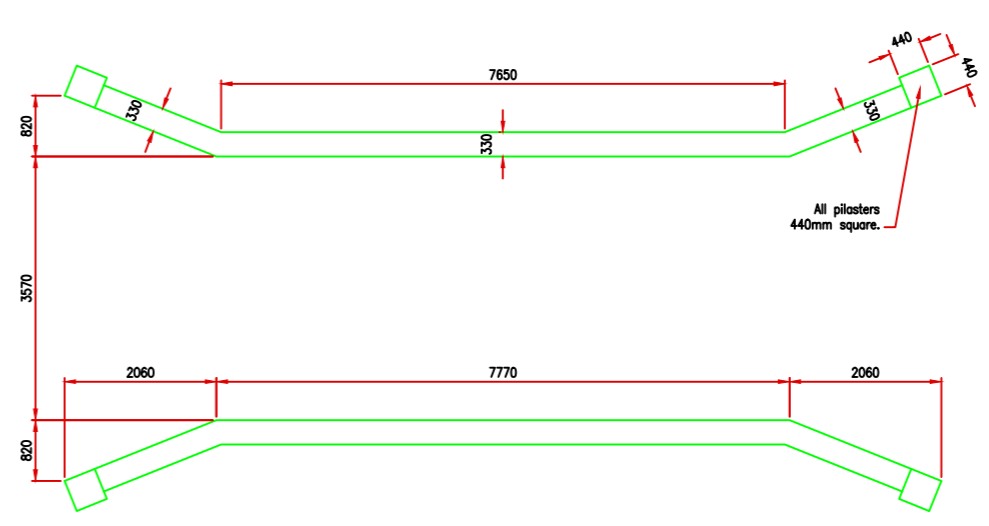
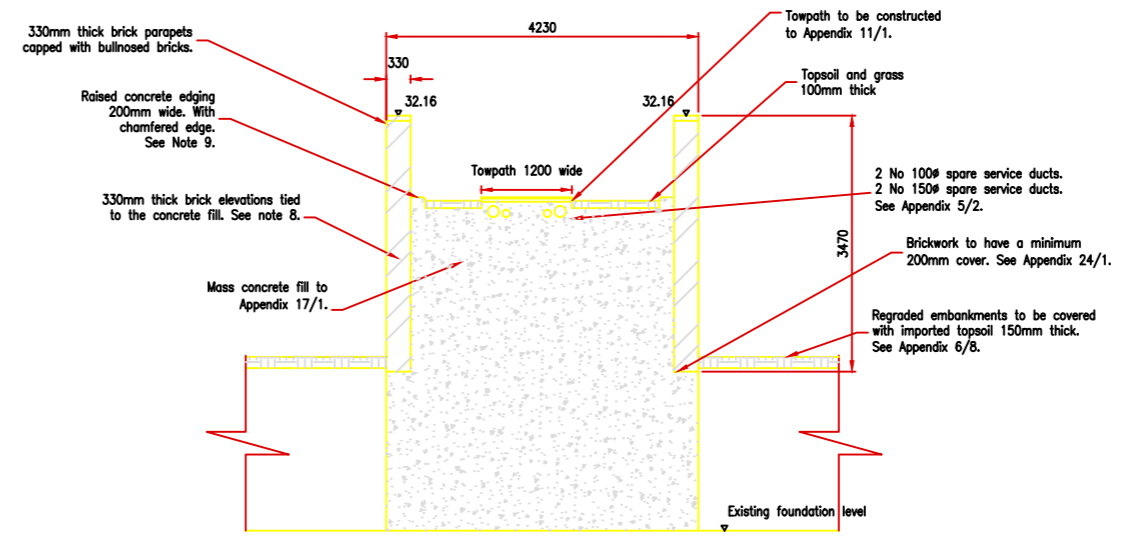
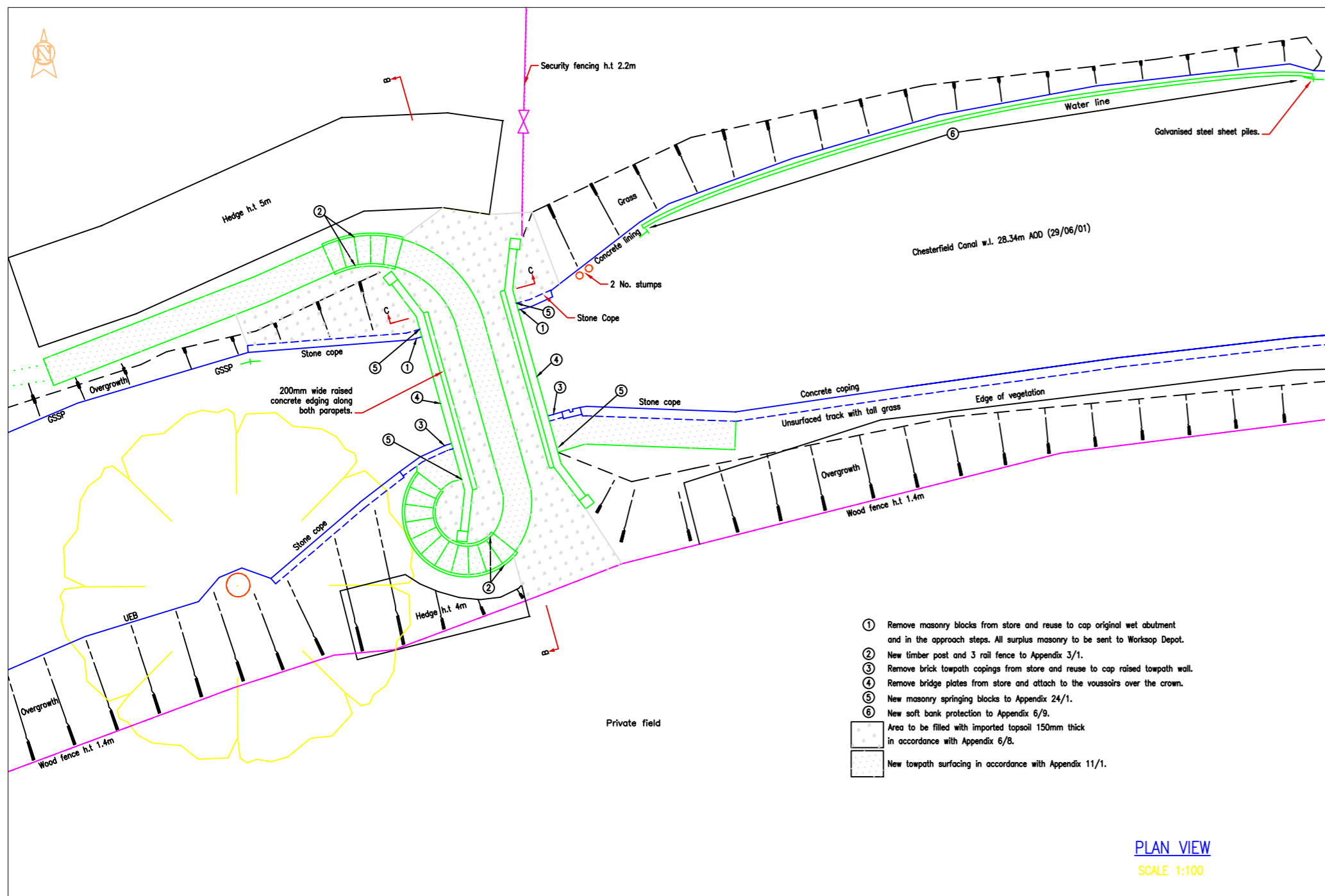
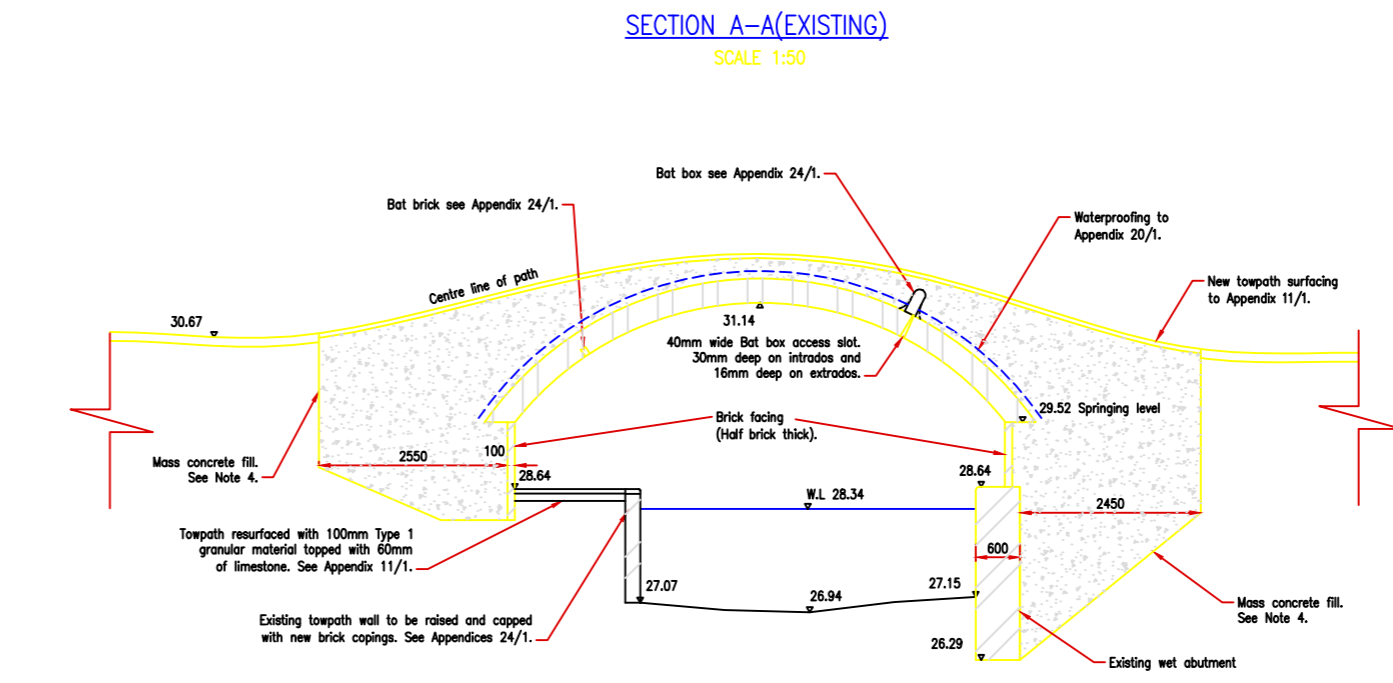
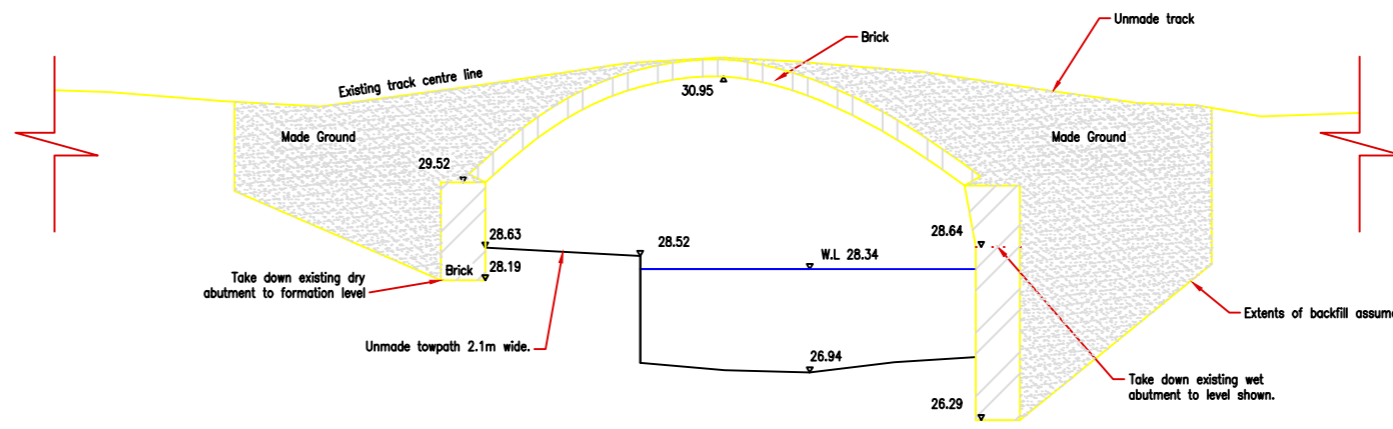
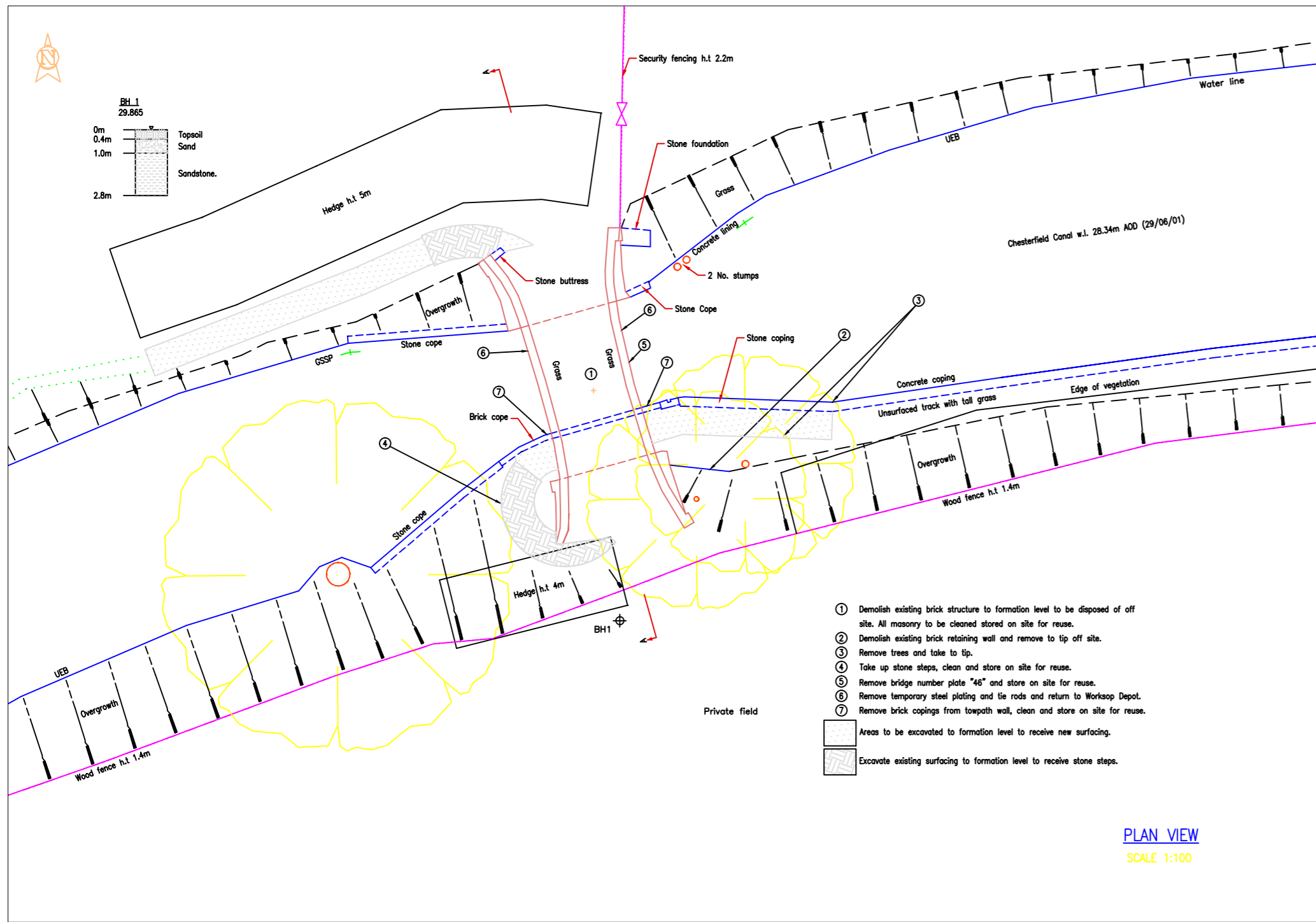


THIS IS AN AUTOCAD DRAWING
DO NOT REVISE BY HAND.

NOTES :-

- All dimensions in mm and levels in metres.
- This drawing is to be read in conjunction with all of the drawings in the 2689 series.
- The agreed canal closure period is 14th January 2002 to 22nd March 2002 in accordance with Appendix 1/26.
- All concrete to be grade C30/20.
- Concrete finishes:
a) formed : All buried surfaces : F1
All exposed surfaces : F3
b) unformed : All buried surfaces : U1
All exposed surfaces : U3
- The E. of the new bridge will be on the same E. as the existing Bridge. The abutment positions will be set 400mm to the north of the existing. This will reduce towpath width by 400mm and produce a 400mm wide upstand on the wet abutment side. Setting out and reference points to be used for checking line and level of the bridge throughout the contract should be established in accordance with Appendix 1/12.
- Brickwork ties to spandrel walls and wingwalls to be staggered at 900mm centres horizontally and 300mm centres vertically.
- Excavation for foundation is to terminate when rock is encountered.
- Exposed concrete arrises to have 25mm x 25mm chamfers.



REVISIONS



DESIGN OFFICE
Technical Services
Fleets Wharf
Napton Street, Leeds LS9 8PB
Telephone: 0113 281 6800
Fax: 0113 281 6886

TITLE
Chesterfield Canal
Osberton Top Turnover Bridge
Site Clearance, Substructures & Surfacing.

DRAWN BY Jeremy Davy	DESIGNED BY Fiona Smith
CHECKED BY	APPROVED BY
DATE 22/11/01	SCALE As shown
DRG. NO. 2688.002	REVISION