

Brecon | Aberhonddu

History, heritage, culture, arts and some fantastic local ale... this market town really packs a punch. And beyond that, it's a great place to start your exploring.

Get on your bike, meander on a boat trip or hire a canoe and head downstream to find a picnic spot. Pack up your fishing rod to find your spot on the towpath, or just take a stroll around one of the many walks of the area.

Brynich

Something to think about as you enjoy your packed lunch at the picnic spot at Brynich... firstly the aqueduct; it crosses the River Usk and is the largest on this canal. Secondly, if you notice the number on the lock here [69], that gives an indication of how many locks once existed on this canal.

Pencelli

With the big bend in the canal at Pencelli, it's not hard to believe that the moat at the former Pencelli Castle was used to make part of the canal here.

Talybont-on-Usk

Tal-y-bont ar Wysg

A good central activity hub for the upper section of the canal, with numerous walks, including an uphill stroll to the nearby reservoir; canoe launches; cycle hire; or just a great place to rest up, enjoy lunch in a pub or a cream tea in the local shop.

ASHFORD TUNNEL IS
375 YARDS LONG
WITH JUST **56"**
OF HEADROOM

Llangynidr

Home to the Greenman Festival in the grounds of the Glanusk Estate. On the canal, Llangynidr is known for its locks. You can't help but stop and watch a working lock, and you've five to choose from here. As well as being a beautiful wildlife and picnic spot, the pond between bridges 68 and 67 helps balance these locks with water.

It takes **200,000 litres** to fill 1 lock and lift a boat **3 metres**

Crickhowell | Crug Hywel

Look no further for your truly local shopping experience... butchers, bakers, books, arts, crafts... Ask a local, who will tell you how passionate the town is about keeping it local, so much that they've launched their own Totally Locally campaign
www.totallylocallycrickhowell.co.uk

Llangattock | Llangatwg

Get off the canal here to see the impressive lime kilns or to visit Crickhowell. If you're staying on, look out for the gigantic Redwood tree near bridge 113.

Rumour has it that the iron used for the gates at Buckingham Palace was brought down from Nantyglo Ironworks and transported on from the wharf here at Llangattock.

Gilwern

You are just about at the halfway way point of the canal. It was close to bridge 110 that the first building work started on the canal in 1796.

Govilon | Gofllon

This small village, split across the centre by the canal, once played a much bigger role in the iron industry, today noted by its inclusion in the Blaenavon World Heritage site.



Up above Govilon towards Blaenavon you'll find the memorial plaque and burial site of 1952 Olympic Gold Medal show jumping horse, Foxhunter.

Llanfoist | Llan-ffwyst

As you come into the picturesque wharf at Llanfoist, there are some small steps heading down to the road and tunnel that runs under the canal. From here you can walk the old Hills Tramroad, which linked the canal to Blaenavon Ironworks during its heyday in the early 19th Century.

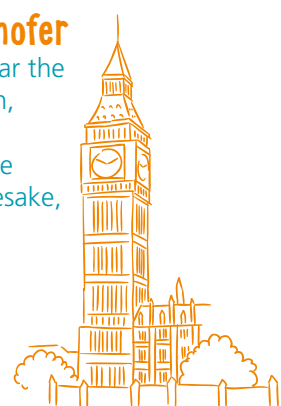
126ft
Redwood
Tree

Abergavenny | Y Fenni

Behind the Norman castle, on the edge of the town and River Usk, this market town really knows how to throw a festival. The calendar is full of events in Abergavenny. Turn up in June and you'll join the greats of the road bike world for its Festival of Cycling, then come back in September to get your taste buds tingling at Abergavenny Food Festival.

Llanover | Llanofor

Next time you hear the chimes of Big Ben, remember that Llanover was once home to its namesake, Lord Llanover, Benjamin Hall.



Goytre Wharf | Glanfa Goetre

Boats, canoes, trails and a tea stop. The wharf at Goytre has it all. A good place to stop and have a chat to one of the team that work on the canal. They are a mine of information on its history and the area.

Pontymoile Basin

Basn Pont-y-moel

The joining point of the Monmouthshire Canal to the Brecon and Abergavenny Canal at the Tollhouse in 1812 to form today's Mon & Brec. Hop off the canal to enjoy a stroll around the nearby Pontypool Park. For the more adventurous, you're just a short jump away from the dry ski slope.



Welcome
Croeso
from
Glandŵr Cymru
The Canal & River
Trust in Wales

The Mon & Brec Canal has a deep cultural heritage rooted in the iron industry of Blaenavon, now a World Heritage Site. Today its stunning surroundings of the Brecon Beacons National Park and Usk Valley, make it a haven for wildlife, a tranquil setting for peaceful walks, and a playground for the more active.

Find more

Readymade
#WATERWAYDAYS
created just for you. Download the app:
IOS Apple Android

Share
Space
DROP
YOUR
PACE

Canals and rivers are a treasured part of our outdoors. So whether you're walking, running or on your bike, help us to keep your towpath safe and pleasant for everyone to share.



Great Nature Watch

Not sure of the difference between a Damselfly and a Dragonfly, a tench and a trout?

Find out with the help of our handy Spotters' Guide, part of the Great Nature Watch app. Visit the iTunes store or Google Play, search for 'Canal & River Trust' or scan the QR code and download. Kids love it!

Download now



ACCOMMODATION
For accommodation in the area contact a Tourist Information Centre or visit:
www.midwalesmyway.com
www.visitwales.com
www.breconbeacons.org
www.visitwykevalley.com
www.visittorfaen.co.uk

Welsh
Phrases

Good Morning
Bore da

Thank you
Diolch yn fawr

Goodbye!
Hwyl!

Where is...?
Ble mae'r...?

Good Afternoon
Prynhawn da

Cheers
Iechyd da!

Hi!
Shwmae!

Please
Os gwelwch
yn dda

[Canal y gamlas]

GETTING Active ON THE Canal

Take a boat trip...

Hire a narrowboat, paddle your own canoe, or take a day trip with a number of hire companies along the canal.

Dragonfly Cruises

Canal Basin, Brecon, LD3 7EW
T: 01873 685222
www.dragonfly-cruises.co.uk

Bikes & Hikes

Lion Yard, Brecon, LD3 7BA
T: 01874 610071
Or via Talybont Stores
Talybont-on-Usk, LD3 7YJ
T: 01874 676663
www.bikesandhikes.co.uk

Beacon Park Day Boats

The Toll House, Canal Basin, Brecon, LD3 7FD
T: 0800 612 2890
www.beaconparkdayboats.co.uk

Cambrian Cruisers

Ty Newydd, Pencelli, LD3 7LJ
T: 01874 665315
www.cambriancruisers.co.uk

Country Craft Narrowboats

The Old Lock House, Cwm Crawnon, Llangynidr, NP8 1ND
T: 01874 730850
www.countrycraftnarrowboats.co.uk

Road House Narrowboats

50 Main Road, Gilwern NP7 0AS
T: 01873 830240
www.narrowboats-wales.co.uk

Castle Narrowboats

Church Road, Gilwern, NP7 0EP
T: 01873 830001
www.castlenarrowboats.co.uk

Beacon Park Boats

Llanfoist Wharf, NP7 9NG
T: 01873 858277
www.beaconparkboats.com

Red Line Boats

Goytre Wharf, Llanover, NP7 9EW
T: 01873 880516
www.redlineboats.co.uk

- ★ Day Boat hire
- ★ Canoes
- ★ Boat Trip hire
- ★ Narrowboats

Get on your bike and ride...

The full length of the canal is accessible by bike and links in to National Cycle Network routes such as the Taff Trail.

Bi-ped Cycles

10 Ship Street, Brecon, LD3 9AF
T: 01874 622296
www.bipedcycles.co.uk

Bikes & Hikes

Lion Yard, Brecon, LD3 7BA
T: 01874 610071
Or via Talybont Stores
Talybont-on-Usk, LD3 7YJ
T: 01874 676663
www.bikesandhikes.co.uk

Drover Holidays

Delivery & collection
T: 01497 821134
www.droverholidays.co.uk

Hopyard Cycles

Hopyard Farm, Govilon,
T: 01873 830219
www.hopyardcycles.co.uk

Tourist Information Centre Canolfan Croeso

Brecon Tourist Information Centre
Cattle Market Car Park, Brecon, LD3 9DA
T: 01874 622485

Crickhowell Resource and Information Centre

Beaufort Street, Crickhowell, NP8 1BN
T: 01873 811970

Abergavenny Tourist Information & National Park Centre

Tithe Barn, Monk Street, Abergavenny,
NP7 5ND
T: 01873 853254



Set up your fishing rod and relax on the canal bank...

There are a number of locations you can fish along the canal. Take a look at the map overleaf for the shaded areas that show you where. More information available at www.canalrivertrust.org.uk/see-and-do/fishing

Merthyr Tydfil Angling Association

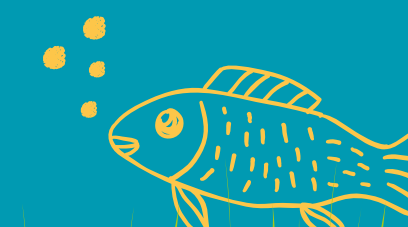
Downstream of Brecon Basin to Bridge 153

Day permits available from Edwards Newsagents, 50 Watton, Brecon, LD3 7EL
T: 01874 623304

Waterway Wanderers Scheme

Buy your permit in advance. Contact Mr John Harding on j.harding048@btinternet.com or telephone 01829 732748.

Bridge 47 to 92
Bridge 96 to Bridge 102
Bridge 106 to 107
Bridge 110 to Ashford Tunnel
Ashford Tunnel to Bridge 153



The MON AND BREC CANAL

"Most visited attraction
in The Brecon Beacons
National Park"

www.canalrivertrust.org.uk



Key

- Tourist Information Centre
 Public House
 Parking
 Canoe Friendly Parking
 Bus Stop
 Cafe
 Canoe Launch
 Fishing - Waterway Wanderers
 Fishing - Merthyr Tydfil Angling Association
 Canal Bridge Number
 Lime Kilns
- Footpaths and Cycle Networks

 - Brinore Tramroad
 - Taff Trail
 - Henry Vaughan Walk
 - Usk Valley Walk
 - Pontypool Circular Walk
 - Goose and Cuckoo Walk
 - Hills Tramroad Walk
 - National Cylce Network
 - Bike Hire
 - Day Boat Hire
 - Canoe Hire
 - Boat Trips
 - Narrowboats

Readymade
#WATERWAYDAYS

on YOUR DOORSTEP
at MON AND BREC CANAL

33 miles of walking, cycling and canoeing



Need to Know?

Ask an Ambassador!

Our Canal & River Trust staff not only work the canal, they are the best people to ask if you want to find out about the area. They love to chat to visitors. You will spot them in their blue uniforms and hard hats.

Fancy volunteering to help look after our lovely canal? Visit www.canalrivertrust.org.uk/volunteering

