

440x150x230 BULLNOSE BRICKWORK COPING BY GRADLEY SPECIAL BRICK COMPANY LIMITED OR SIMILAR APPROVED. COPING SECURED BY MANUFACTURERS COPING RESTRAINT SYSTEM.

LANDSCAPING FILL FROM SELECTED AS DUG MATERIAL TO BE ADDED TO FINISHED SURFACE TO BE PROFILED WITH 1:40 FALL INTO LOCK

800 WIDE TOPPATH

1500 WIDE TOPPATH

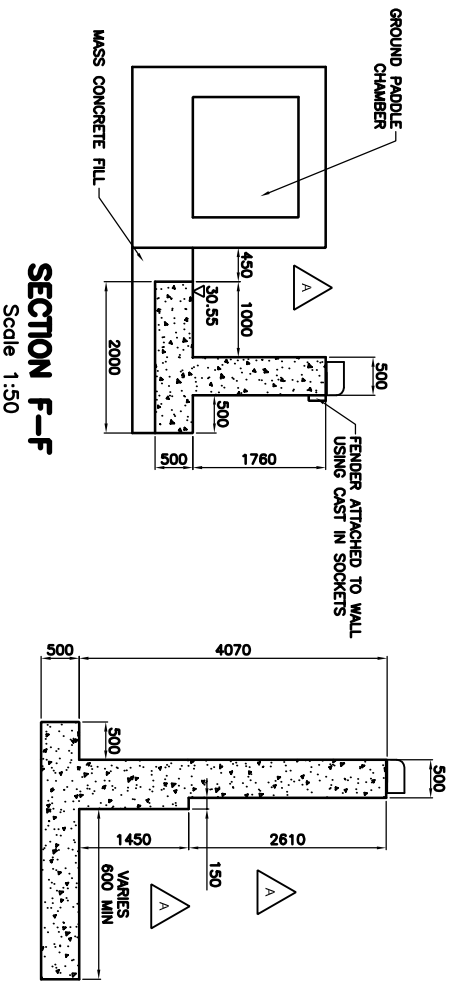
LIMIT OF MEASUREMENT FOR EXCAVATIONS

STABILITY OF SIDE SLOPES TO BE ASSESSED BY CONTRACTOR, PRIOR TO EXCAVATION.

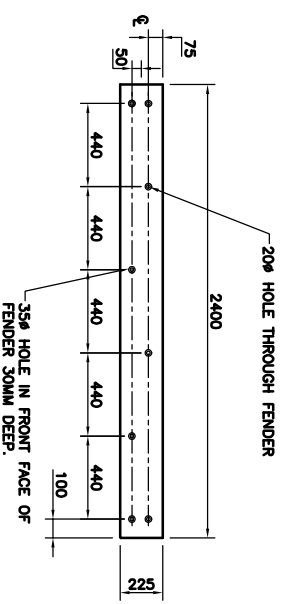
LIMIT OF MEASUREMENT FOR EXCAVATIONS

75MM C10 BLINDING

SECTION E-E
Scale 1:50



DETAIL 1 - SECTION ON FIXING DETAIL
FENDER DETAIL
Scale 1:20



225x75 RECYCLED PLASTIC FENDERS BOLTED TO CONCRETE BY M12, 100MM LONG STAINLESS STEEL BOLTS. ALL BOLTS TO BE RECESSED BY 30MM IN 35# HOLE INTO FENDER. CAST IN STAINLESS STEEL ANCHORS AND BOLTS USED TO SUPPORT FENDER.

COPING BRICK

GAP MADE UP WITH SURFACING MATERIAL

MASS CONCRETE HAUNCH

REINFORCING MESH FOR COPING RESTRAINT SYSTEM

DETAIL 1 - ELEVATION ON FENDER
FENDER DETAIL
Scale 1:20

LANDSCAPING FILL FROM SELECTED AS DUG MATERIAL TO BE ADDED TO FINISHED SURFACE TO BE PROFILED WITH 1:40 FALL INTO LOCK

16# DOWEL BAR 400 LONG AT 400 C/C SLEEVED AND DEBONDED OVER HALF ITS LENGTH WITH 20MM COMPRESSION CAP OR SIMILAR APPROVED

18MM# DOWEL BAR 400 LONG AT 400 C/C SLEEVED AND DEBONDED OVER HALF ITS LENGTH WITH 20MM COMPRESSION CAP OR SIMILAR APPROVED

JOINT SEALANT ON BOND BREAKING TAPE

HYDROCELL XL JOINT FILLER BY FOSROC OR OTHER SIMILAR APPROVED

REINFORCEMENT CAGE

EXPANSION JOINT DETAIL IN BLINDING

BASE

NTS

JOINT SEALANT ON BOND BREAKING TAPE

SUPERCAST REARGUARD S BY FOSROC, OR SIMILAR APPROVED

LOCK FLOOR CONSTRUCTION JOINT DETAIL

NTS

EXPANDIFOAM JOINT FILLER BY FOSROC OR OTHER SIMILAR APPROVED

18MM# DOWEL BAR 400 LONG AT 400 C/C SLEEVED AND DEBONDED OVER HALF ITS LENGTH WITH 20MM COMPRESSION CAP OR SIMILAR APPROVED

SUPERCAST HYDROFOIL WATER STOP OR OTHER SIMILAR APPROVED

HYDROCELL XL JOINT FILLER BY FOSROC OR OTHER SIMILAR APPROVED

ONE PART POLYURETHANE SEALANT COLOUR TO MATCH MORTAR

EXPANSION JOINT DETAIL AT WALL STEM

FILLER BOARD AND GAP OMITTED ON CONSTRUCTION JOINTS.

NTS

TYPICAL JOINT DETAIL

NTS

REARGUARD S BY FOSROC, OR OTHER APPROVED

FILLER BOARD (OMITTED ON CONSTRUCTION JOINTS)

JOINT SEALANT ON BOND BREAKING TAPE

SUPERCAST HYDROFOIL WATER STOP BY FOSROC OR OTHER SIMILAR APPROVED

SUPER CAST SWX AND ADHESIVE BY FOSROC OR SIMILAR APPROVED USED IN ALL HORIZONTAL CONSTRUCTION JOINTS

NOTES:

1. Do not scale from this drawing.
2. All dimensions are in millimetres unless otherwise shown.
3. All levels are in metres and based on ordnance datum (Newlyn).
4. Prior to construction all dimensions in the gate recesses shall be checked for compatibility by the gate designer.
5. This drawing shall be read in conjunction with the following drawings:
WN/CBAG/040/041-047
6. For setting out details refer to channel works drawings.
7. All bollards, and other lock furniture to be provided by British Waterways.
8. All concrete to be grade C40/50.
9. Surface finish to be fair finish.
10. Backfill to structures to comprise a material complying with a 2C classification to the specification for highway works. Refer to the works information for grading curve.
11. All brickwork to be provided by British Waterways.

The maximum difference in backfill levels behind the walls on either side of the lock shall be 1 metre

AS-BUILT

Rev	Description	Date	By	Checked/Approved
1	ISSUE FOR CONSTRUCTION	9/7/18	PAW	PAW
2	LEVEL OF STEP CHANGED TO 150MM TO MATCH EXISTING			

Client: **British Waterways**

Client's Office: **Morrison Construction**

Design Office: **British Waterways**

Project: **DROTJWICH CANAL RESTORATION JUNCTION CANAL**

Drawing: **LOCK 6 GENERAL ARRANGEMENT SHEET 2 OF 2**

Drawn by: PAW Date: 29/11/07

Checked by: CJF Date: 9/7/8

Authorised by: AEP Date: 9/7/8

Drawing No: **WN/CBAG/040/041 A**

Revision: **A**

Drawing Scale: AS SHOWN @ A1

CAO Filename: **Pol Scale: 1:1**