



Canal &
River Trust

South East Waterway Trade Meeting - Spring 2016



**Vicky Martin,
Waterway Manager**

What to expect from the evening?

SE Waterway news

Business Boating Update

Customer Operations Update

Water resources

Vegetation management & Dredging

Engineering Update

Enforcement update

Working together (Trade adoptions, canal clean ups etc)

CRT Restructure

Chief Executive
Richard Parry

Asset Management
& Performance

Asset
Delivery

Property

Legal

Finance

HR

Strategy
& Planning

Marketing,
Fundraising
Enterprise

Customer Service

Asset Strategy

Engineering

Environment

Heritage

M&E

Operational Buildings

Hydrology

Health & safety

SCADA / ICA



Waterways x 11

Boating

Museums

Community Engagement

Customer service

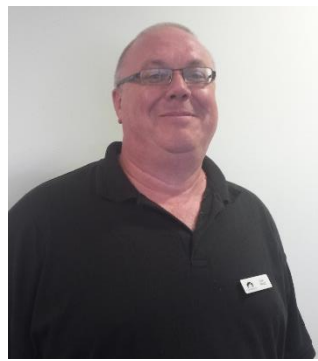
SE Waterway Team

Waterway
Manager
Vicky Martin



Customer
Operations
Manager

Lee King



Customer
Support
Co-ordinator

Amy
McEleney



Development
&
Engagement
Manager

Sarah Brown



Volunteer
Development
Co-ordinator

Miriam
Linthorpe



Stoke
Bruerne
Canal
Museum

Louise Stockwin
Stephanie Furniss



Customer Service Facilities

- Audit & data cleansing
 - CSF, Elsans, Pump outs & water points checked (i.e. SAP data v contract data)
 - maps on our web pages updated
- Jan - April 2016
 - Boating Sub Group (part of SE Waterway Partnership) using updated data / maps to assess current compliance with the draft 2006 standards
 - 1) to judge how far we are away from these standards
 - 2) to understand their current provision levels
 - Project Team will continue the SAP data cleansing around winding holes, slipways, waste and recycling points

Customer Service Facilities

- May - September 2016
 - Steering Group reviews waterway feedback & amend the standards
 - Customer Facility Provision Plan to be developed by the Boating Sub Group
 - National consistency checks
- September - October 2016
 - Boating Sub Group to develop an action plan that will help the Trust achieve the required provision within reasonable & agreed timescales
- October 2016 - January 2017
 - The draft 2006 standards to be updated to reflect the action plans and provide a set of standards that reflect customer need & inform investment

New Signage



1. Welcoming & Discovering

Signs that welcome and inform towpath visitors of services or general points of interest. These may include maps and images.



2. Points of Interest

Signs that inform visitors about the history or other interesting facts of a particular area. One example of a point of interest for visitors is 'Nature trails'.



3. Engaging

Signs that encourage positive behaviour and signs that promote work or campaigns that will be temporary.



4. Interpretation

These signs come in various formats, which are explained, in greater detail in the Delivering waterway interpretation projects guidance document.



5. Instructional

Signs informing users of direct instructions or prohibited actions.



6. Safety

Signs that give information to avoid accident or injury.



7. Warning

Signs that deliver instructions directly. Like the safety signs,



8. Local Direction

Signs located outside the Trust's remit that raise

Other projects

- DMPs
 - 2015/16: Foxton & Stoke Bruerne
 - 2017: Milton Keynes canal corridor
- Destination Marketing pilot
 - British Tourism and Travel Fair – NEC March
- Working together
 - Trade adoptions
 - Clean ups
 - Conservation camps?



Canal &
River Trust

Environment Agency Navigations update

Background: 2010 - 2015

2010

- Govt. confirmed its intention to transfer the Agency's waterways to the new waterways charity
- Some high level work/costing done, but not taken forward

2013

- Defra requested a comprehensive review
- Large Agency and Trust teams established
- Govt. later decided not to take project forward

2015

- New Waterways Minister – Rory Stewart – supportive of the transfer
- Defra, the Trust and the Agency agree to work together to explore the possibility of a transfer of navigations

Formal Announcement – 19 Feb 2016

Joint working group established

Confirmation of navigations under consideration

Govt. ambition to transfer the Agency's navigations to the Trust

Working group is at a very early stage and no decisions have been made

Needs approval by the Minister and the Trust's Board

Initially data gathering, then wider consultation

Agency, Trust and Defra committed to finding a sustainable future for the Agency's navigations

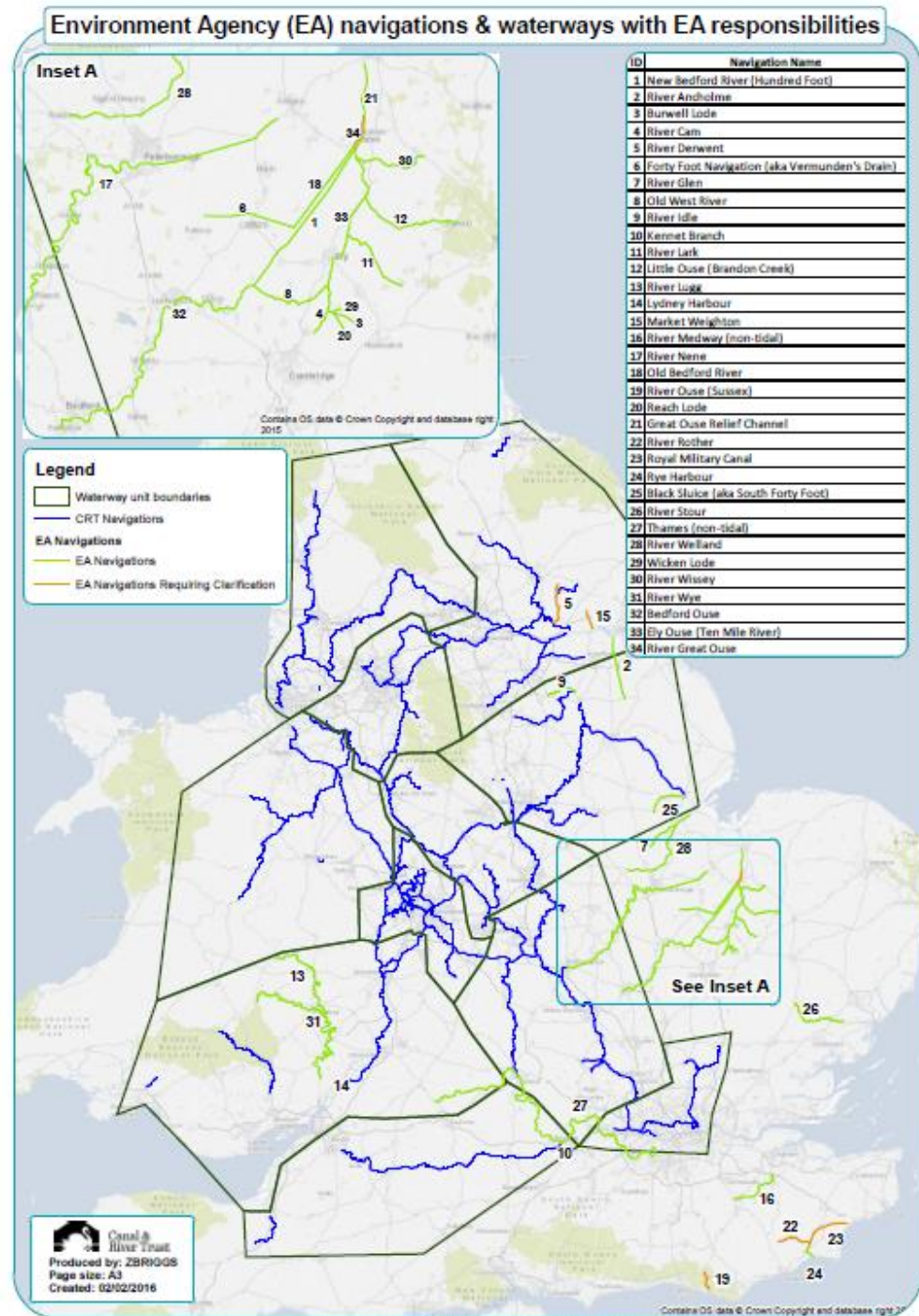
Navigations proposed for transfer



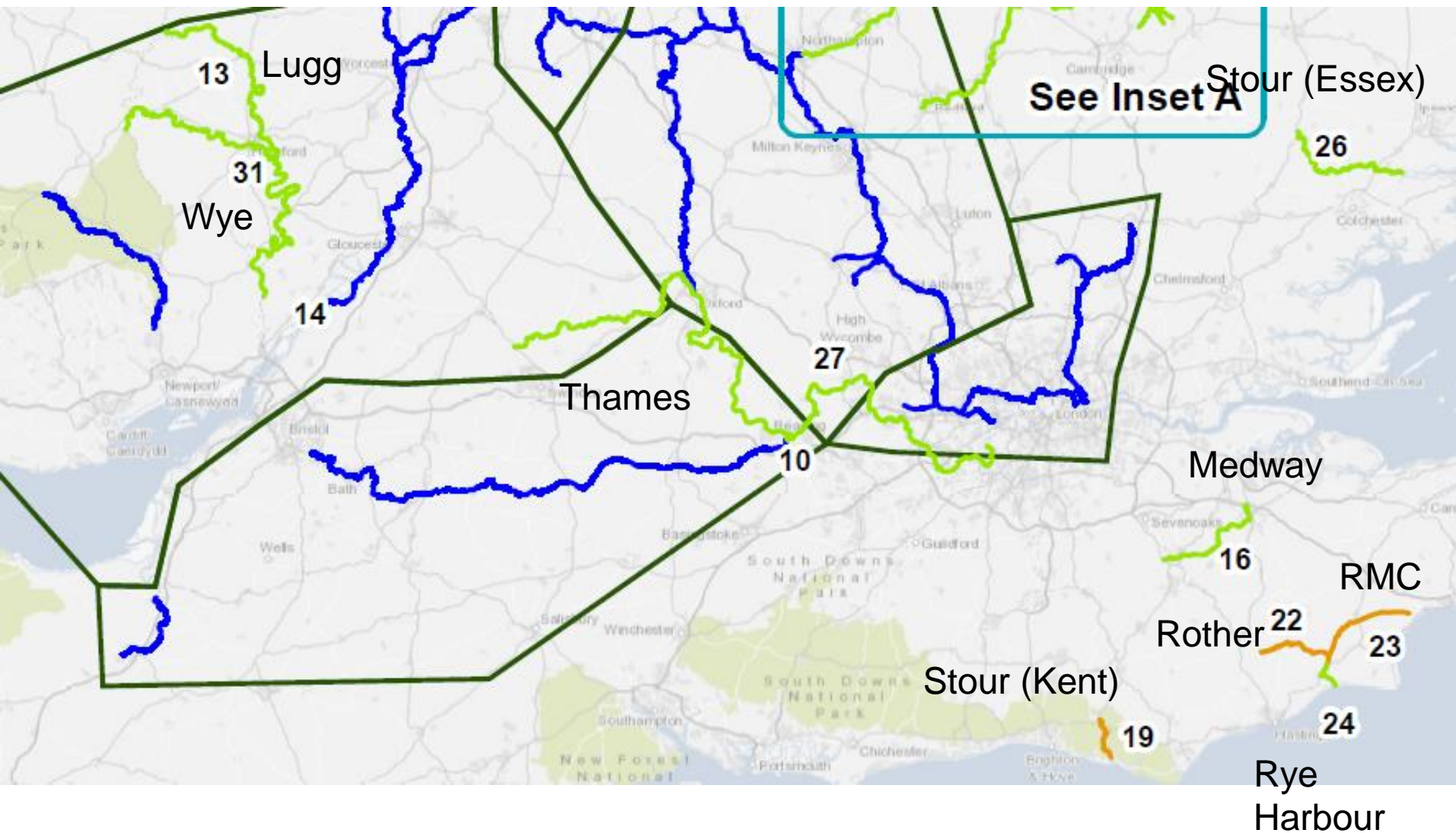
Wicken Lode - Cambridgeshire



Willington Lock – nr Bedford



Thames and Medway Waterways



The 2016 Project

Phase 1 – to mid 2016

- Information exchange
- Data gathering
- Site visits
- Consultation with the IWA
- Funding and management options
- Report to the CRT Board

Phase 2 – mid 2016 onwards

- Develop proposed options
- More detailed assessment of transfer issues
- Possible transfer in 2018 or 2019



Canal &
River Trust

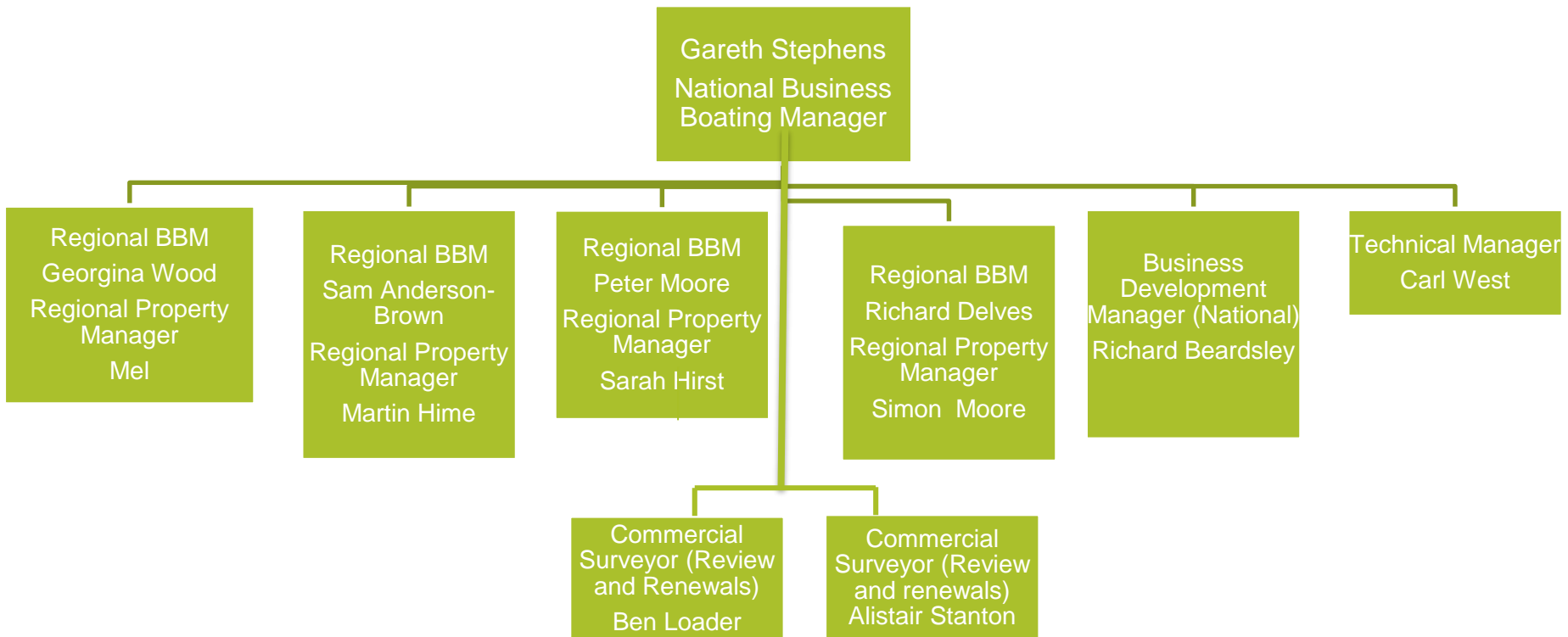
Sam Anderson- Brown Business Boating Manager

South East Business Boating Team

Sam Anderson-Brown
Business boating manager
(South East)
First Floor North
Station House
500 Elder Gate
Milton Keynes, MK9 1BB
Tel: 01908 302598
Mobile: 07825 453086
Email: [Sam.Anderson-
Brown@canalrivertrust.org.uk](mailto:Sam.Anderson-Brown@canalrivertrust.org.uk)

Martin Hime
Business boating surveyor
Toll House
Delamere Terrace
London, W2 6ND
Tel: 02032 044416
Mobile: 07826 513696
Email:
martin.hime@canalrivertrust.org.uk

Business Boating – The team

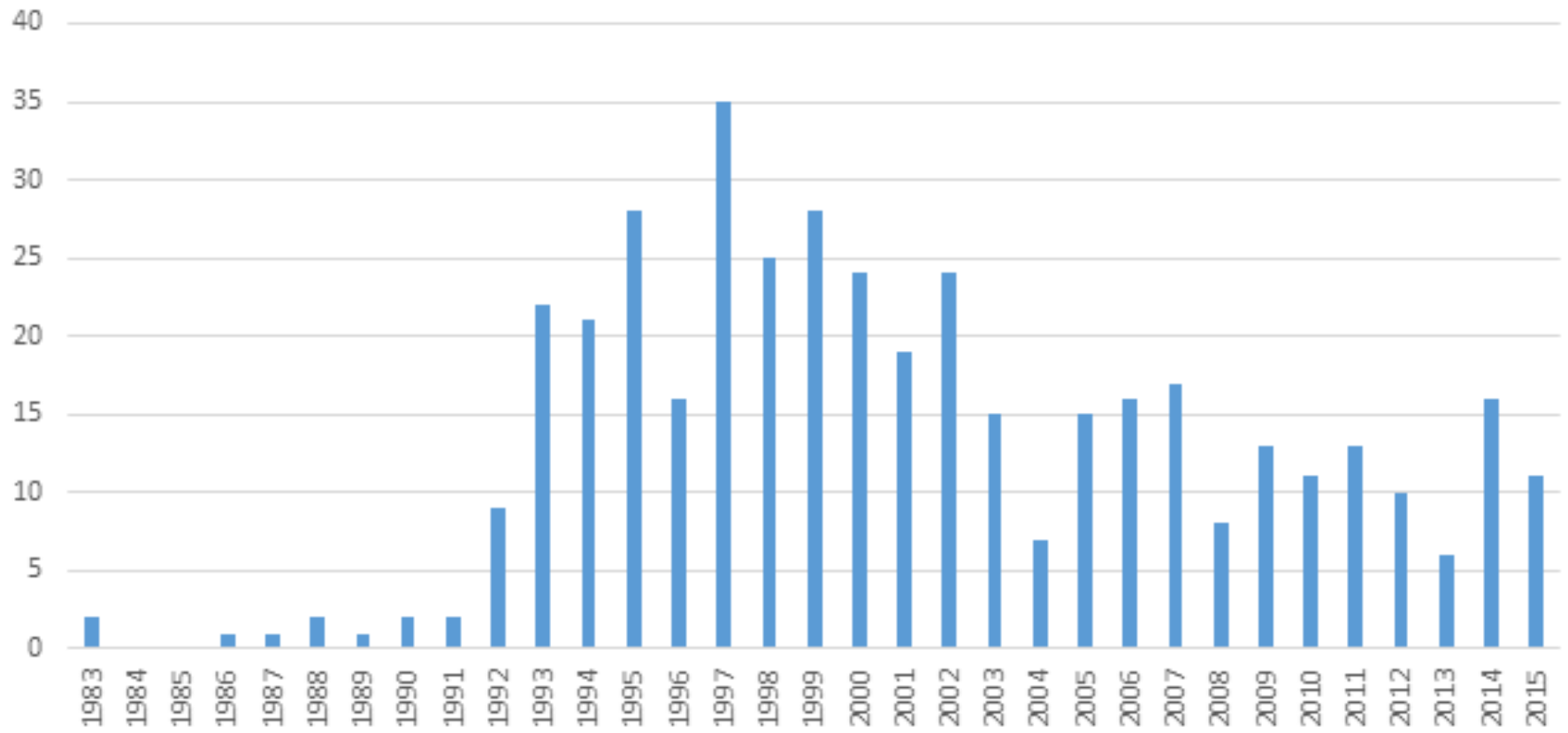




Canal &
River Trust

Lee King – Customer Operation Manager

Number of gates built by year



Proposed Lock Gates to be replaced 2016/17

Lock 25, Bottom Gate	Soulbury, Three Locks
Lock 53, Top Gate	Berkhamsted
Lock 54, Top Gate	Berkhamsted
Lock 60, Top Gate	Berkhamsted
Lock 75, Bottom Gate	Chandlers Cross

Work planned for 2016

B16 STPG Lock 28 Bottom Gate Refit	GL-053-001-02	Lock 28 Bottom Gate
B16 STPO Lock 5 Btm gate refit and cill	GN-002-006	Lock 5
B16 STPG lk8 approach copings	GU-078-006	Lock 8
B16 STPG lk8 leakage cill/mitre bt gate	GU-078-006	Lock 8
B16 STPG - Lk8 leakage on steel gate	GU-078-006	Lock 8
B16 STPG lk8 crack on quadrnt wall steps	GU-078-006	Lock 8
B16 STPG lk8 repairs gate recess	GU-078-006	Lock 8
B16 STPG Loose bricks in o/s valve hole.	GU-078-006	Lock 8
B16 STPG Loose bricks in t/p valve hole	GU-078-006	Lock 8
B16 STPO Relay copings o/s and tps	GU-078-009	Lock 9
B16 STPO Repot bottom gate Lock 14	GU-103-009	Lock 14, Top Lock
B16 STPO Leak on bottom gate	GU-103-011	Lock 15
B16 STPO - lk16 chamber repointing	GU-104-002	Lock 16
B16 STPO - lk17 mitre leak	GU-104-003	Lock 17
B16 STPO chamber brickwork repairs	GU-104-003	Lock 17
B16 STPO Leakage through t/p side steps	GU-104-003	Lock 17
B16 STPG Leak on top gate	GU-104-004	Lock 18
B16 STPG lk18 bottom gate replacement	GU-104-004	Lock 18
B16 STPO - lk19 brickwork repointing	GU-104-007	Lock 19

B16 STPO - Top gate leaks	GU-104-007	Lock 19
B16 STPO Refit bottom gates Lock 19	GU-104-007	Lock 19
B16 STPO Lock 20 top gate refit	GU-105-001	Lock 20
B16 STPO Bottom gates refit	GU-114-008	Lock 21, Cosgrove Lock
B16 STPO Lock 20 top gate refit & cill	GU-114-008	Lock 21, Cosgrove Lock
B16 STPO o/s southern approach wall	GU-125-002	Bridge 81, Willen Bridge
B16 STPO Towpath rotating away	GU-125-002	Bridge 81, Willen Bridge
B16 STPO brick erosion wet abutment	GU-127-001	Bridge 83, (Redway)
B16 STPO Top gates relining	GU-153-001	Lock 32, Ivinghoe Locks
B16 STPG Cill bumper required	GU-154-006	Lock 34, Seabrook
B16 STPG Pointing Repairs.	GU-154-006	Lock 34, Seabrook
B16 STPG Both set gates breast leak	GU-154-006	Lock 34, Seabrook
B16 STPG Top o/s gate paddle post rot.	GU-154-006	Lock 34, Seabrook
B16 STPG Top t/p centre paddle post rot	GU-154-006	Lock 34, Seabrook
B16 STPO refit bottom gates Lock 45	GU-159-009	Lock 45
B16 STPO Bricks missing o/s chamber wall	GU-164-004	Lock 46, Cowroast Lock
B16 STPO Cill bumper missing	GU-164-004	Lock 46, Cowroast Lock
B16 STPO refit bottom gates Lock 46	GU-164-004	Lock 46, Cowroast Lock
B16 STPO Lock 49 btm refit	GU-166-002	Lock 49, Northchurch Lock
B16 STPO Lock 74 Bottom Gate refit	GU-183-005	Lock 74, Lady Capels
B16 STPO Top gates leak	GU-183-005	Lock 74, Lady Capels
B16 STPO Lock 81 Gate refit	GU-191-007-02	Lock 81 Top Gate

B16 STPG Dukes Cut, bwk pointing	OD-001-001	Lock 44A, Dukes Cut Lock
B16 STPG Spalling offside coping	OD-001-001	Lock 44A, Dukes Cut Lock
B16 STPG Brickwork repair.	OX-048-010	Lock 9, Napton
B16 STPG Gate refit reqd.	OX-048-010	Lock 9, Napton
B16 STPG Leak x 2 btm approach	OX-048-010	Lock 9, Napton
B16 STPO - Bwk reps . p2	OX-049-004	Lock 14, Adkins Lock
B16 STPO refit bottom gates Lock 31	OX-086-001	Lock 31, Kings Sutton Lock
B16 STPO refit top gates Lock 31	OX-086-001	Lock 31, Kings Sutton Lock
B16 STPO Lock 32 - Repair of by wash cul	OX-089-003	Lock 32, Nell Bridge Lock
B16 STPO Lock 32 btm gate refit	OX-089-003	Lock 32, Nell Bridge Lock
B16 STPO refitop gates Lock 32	OX-089-003	Lock 32, Nell Bridge Lock
B16 STPO Rot in top gate heel post	OX-089-003	Lock 32, Nell Bridge Lock
B16 STPO refit top gates Lock 36	OX-098-006-02	Lock 36 Top Gate
B16 STPO O/s Approach walls missing	OX-102-002	Bridge 208, High Bush Bridge
B16 STPO Rebuild approach wall	OX-108-001	Bridge 215, Caravan Lift Bridge
B16 STPG Bwk repairs. BK	OX-110-001	Lock 40, Bakers Lock
B16 STPG Coping replacement	OX-110-001	Lock 40, Bakers Lock
B16 STPG Damaged quadrant. BK	OX-110-001	Lock 40, Bakers Lock
B16 STPG Leak through weir wall	OX-110-001	Lock 40, Bakers Lock
B16 STPG Point Pisser	OX-110-001	Lock 40, Bakers Lock
B16 STPG Rotten top balance beam	OX-110-001	Lock 40, Bakers Lock
B16 STPG Brick repairs	OX-110-001	Lock 40, Bakers Lock
B16 STPG gap betwn cast checker plate-	OX-110-001	Lock 40, Bakers Lock
B16 STPG Lock spindle survey	OX-110-001	Lock 40, Bakers Lock
B16 STPG Lock spindle survey	OX-110-001	Lock 40, Bakers Lock
B16 STPG Missing brick copings	OX-110-001	Lock 40, Bakers Lock
B16 STPG missing coping stones.	OX-110-001	Lock 40, Bakers Lock
B16 STPG O/S Subsidence Behind btm Gate	OX-110-001	Lock 40, Bakers Lock
B16 STPG Pavier Missing BG Recess. BK	OX-110-001	Lock 40, Bakers Lock
B16 STPG Subsidence aproach wingwall tp	OX-110-001	Lock 40, Bakers Lock
B16 STPG Brick repairs	OX-111-002	Lock 41, Shipton Lock
B16 STPG - broken breast post	OX-111-002-02	Lock 41 Top Gate
B16 STPG Clapper post rotten and split	OX-111-002-03	Lock 41 Bottom Gate
B16 STPO bricks missing C3 - P2	OX-111-004	Bridge 219, Shipton Lift Bridge



Canal &
River Trust

Water Management update

Adam Comerford
National Hydrology Manager
8 March 2016

Water Resources

- CRT Water Resources Strategy [published](#) last autumn, work on Strategic actions underway
- All SE Reservoir Groups in good position in advance of main 2016 boating season
- Monthly updates given in [Reservoir Watch](#)
- Spring water resources update due soon (link to previous 2015 [spring](#) and [autumn](#) updates)
- Continued work on supporting restorations, e.g.: Daventry Canal Arm, B&MK Link, Wendover Arm, Bucks Canal
- Annual Lockage Report 2015 [published](#) recently

**RESERVOIR REPORT: K&A, South East and London**

GROUP (Click on button to view group holding)	RESERVOIR (Click on button to view graph)	TOTAL CAPACITY (MI)	WATER LEVEL (mm)	CURRENT HOLDING (MI)	VARIATION IN PERIOD (MI)	PERCENTAGE HOLDING (Key as above)
KENNET & AVON	CROFTON	24.9	-50	23.4	1.0	94.1%
GRAND UNION BRAUNSTON	DAVENTRY	1031.5	-40	1018.4	3.3	98.7%
	DRAYTON	354.4	-260	327.9	14.1	92.5%
	TOTAL	1385.9		1346.3	17.3	97.1%
GRAND UNION LEICESTER	NASEBY	1117.1	+70 (spilling)	1112.3	0.0	100.0%
	SULBY	316.7	+10 (spilling)	316.7	0.0	100.0%
	WELFORD	301.4	+90 (spilling)	301.4	0.0	100.0%
	TOTAL	1735.2		1730.4	0.0	99.7%
GRAND UNION NORTH	SADDINGTON	448.0	+80 (spilling)	448.0	0.0	100.0%
SOUTH OXFORD	BODDINGTON	891.2	+20 (spilling)	891.2	0.0	100.0%
	WORMLEIGHTON	79.7	-150	74.5	1.7	93.6%
	CLATTERCOTE	269.7	+20 (spilling)	269.7	0.0	100.0%
	TOTAL	1240.6		1235.4	1.7	99.6%
GRAND UNION WARWICK	NAPTON	162.0	-50	157.8	4.2	97.4%
GRAND UNION TRING	TRINGFORD	165.8	+80 (spilling)	165.8	0.0	100.0%
	STARTOPSEND	491.1	-760	403.1	-4.7	82.1%
	MARSWORTH	187.0	+60 (spilling)	187.0	0.0	100.0%
	WILSTONE	1069.8	+40 (spilling)	1069.8	4.3	100.0%
	WESTON TURVILLE	115.4	+40 (spilling)	115.4	0.0	100.0%
	TOTAL	2029.0		1941.0	-0.3	95.7%
LONDON	BRENT	1632.0	-1088	1078.7	2.4	66.1%

COMMENTS :-

Date : 07-Mar-16

N/A = Reading not taken or Waterway has not made the data available to Water Management at time of processing report.

HOLDING IN RELATION TO LONG
TERM AVERAGE (LTA) - 2003 to 2012Below LTA
Above LTA
Equal to LTA
No Data



Canal &
River Trust

Vegetation & Dredging Update- South East

Richard Bennett
Environment Manager- South
March 2016

Environment - Role

- Leading the Trust's approach on the natural environment;
- Supporting all parts of the Trust on environmental management issues within all our activities;
- Heavily involved with Publicity / Fund-raising / Volunteering / Marketing / Stakeholder engagement etc etc.

Environment team in South

A full team at last!

- Environment Manager– Richard Bennett
- London- Lise Andreassen Snr Environmental Scientist
 - Chantal Dave- Graduate Ecologist/ Env Scientist
- South-East- Senior Ecologist- Penny Foster
 - Environmental Scientist- Philip Kyeremanteng



- K&A- Ecologist- Laura Mulholland
- Env Scientist- Rob Coles
and Oda Dijksterhuis



- Support for Kier Contract Delivery in South- Stuart Collins,
- Volunteer Coordinator for AM&P – Amanda Morgan



Veg Management

Standardising requirements, managing risk, prioritising and determining Strategy.

Vegetation in South East

Overview of changes

Consistency around the country

Highlights of 2015-16 work

Oxford Hedge Mgmt Plan

western power done power line sections

Topping at Aynho

Cropredy- too thick to flail, so agreed to hedge-laying in 2016
agreed with adj. landowner.

Grass Cutting

Change from 9 to 6 per yr (with locks and moorings still 9). Consistent around country

-Saves £250k p/a which will be spent on hedges/trees in SE

HIGH PRIORITY TREES

£250K spent on these ,based on professional arboticultural assessment of risk. Annual resurvey

OFFSIDE VEG

Continue a cycle GU Leicester Line was focus in 2015-16.

Reed Cutting - Northampton Arm, Oxford - Dukes Lock Lake and Northbrook , Wendover Arm and Marsworth Reservoir

Leicester Line dredged

FENDER GROWTH - Tackled all over- hotspots were Wendover, N Oxford and Leicester Line.

LET US KNOW WHAT ELSE YOU SEE

Dredging Management

Getting to a long term (10+ yrs) dredging plan
Revision of Prioritisation.

Dredging in South East

Overview of changes

Consistency around the country- Prioritisation, hydrographic survey, and user comments

Progressively will be planning further in advance, to give time for cost savings (especially in disposal methods)

Mainline and Spot-dredging

Greater emphasis on customer comments than hydrographic compliance

Highlights of 2015-16 work

Leicester Line done

2016:Saddington to Dukes Lock

2017:Lock 49-51 (deferred as result of response to flooding in North)



Canal &
River Trust

Neil Owen - Regional Engineer South

What are we and what do we do?

November 2015

- Two teams created – Executive Head report to Richard Parry
1. Operations Delivery – project management, design and delivery
 2. Asset Management & Performance - Cover Environment, Heritage and Engineering. National Team split into four regions.

Asset Management and Performance

Engineering Team South – covering Kennet and Avon, London and South East

- Manage the identification of defects, prioritisation and identify the year for delivery year for the high priority works programme.
- Manage project for inclusion in the project programme (major works)
- Provide engineering support to the wider business



Canal &
River Trust

**Licensing Enforcement
National Boat Check
March 7th – 18th 2016**

**Continuous cruising monitoring
update**

Continuous cruising

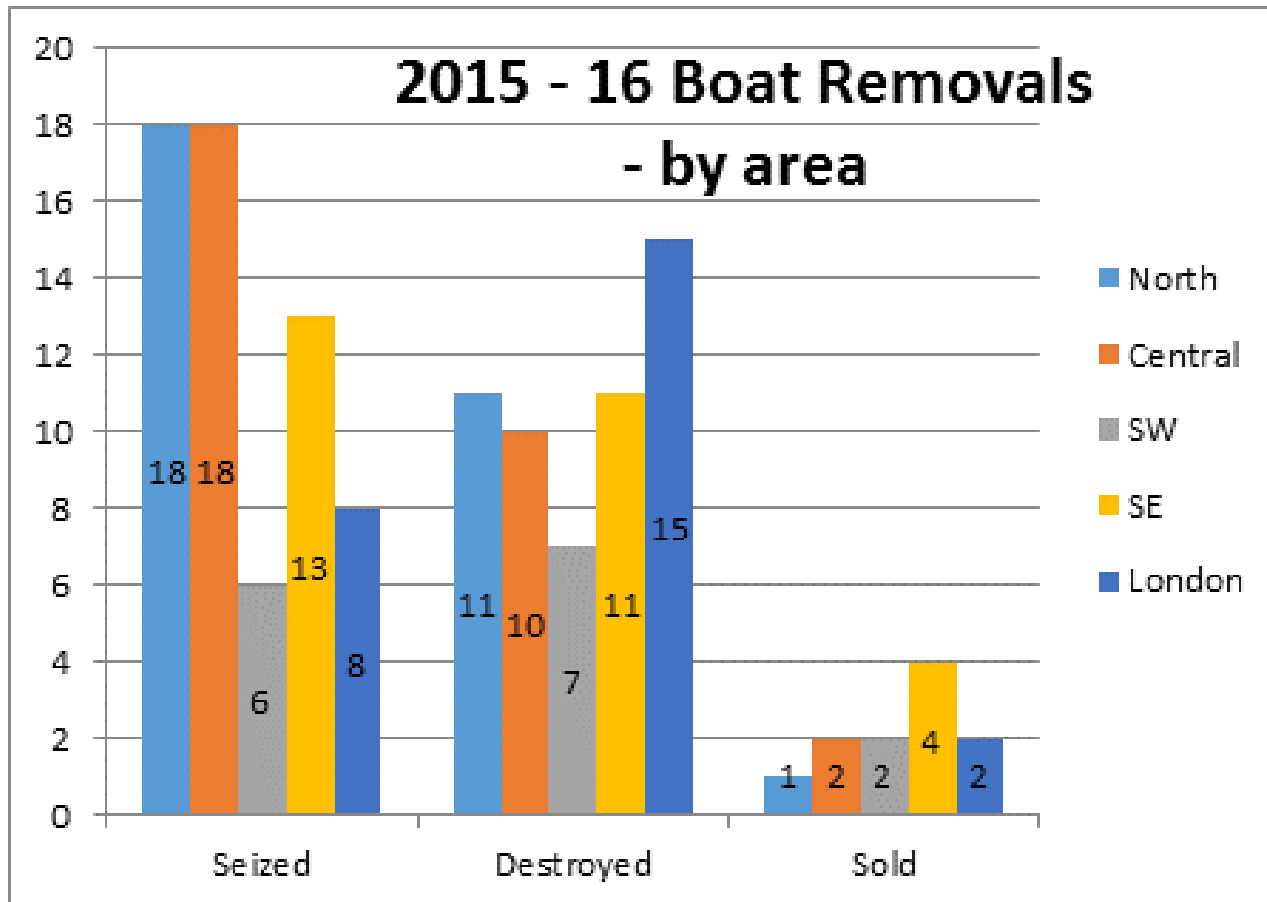
Headlines:

- During the first nine months 4479 boats movement patterns have been reviewed prior to a renewal being offered.
- 1800 (40%) were subject to a more detailed review for a variety of reasons.
- 488 boats have taken out restricted licences as a result of this process
- 103 have reached the end of their restricted licence - 57 showed improvement and allowed further licence - 17 sold boat or obtained home mooring - 29 refused further CC licence

Regional Cases

Renewal	C E	Ldn	Nth	NW&M	SE	SW	Total
May 15	1	21	5	3	13	6	49
June 15	9	28	8	6	20	9	80
July 15	6	54	12	5	21	13	111
August 15	1	47	11	1	15	11	86
Sept 15	8	32	8	5	11	7	71
October 15	4	27	7	4	10	13	65
Nov 15	3	16	8	6	4	9	46
Dec 15	2	13	1	2	4	6	28
Jan 16	1	19	4	2	7	12	45
Feb 16	1	5	5		2	3	16
TOTAL	36	262	69	34	107	89	597

Boat Removals





Canal &
River Trust

Any questions?