

Caring for the Llangollen Canal

We're the charity working to protect and bring to life this 250-year-old network of canals and rivers spanning England and Wales. Not so long ago many canals were abandoned, and some lost forever. Today, with your support, wildlife is recovering, history is alive, boats are plentiful and spending time in this environment is contributing to our health and happiness.

Our mission is to keep this extraordinary network of canals and rivers alive, teeming with wildlife, transforming places they run through and enriching all of our lives. Your support today could help us care for the Llangollen Canal and many more places, for today and generations to come.

DONATE



Please support
our work &
donate today

SCAN ME



The task of protecting the finest examples of working industrial heritage including Grindley Brook Locks, and the wildlife that calls it home, is growing all the time. As a charity we need you by our side more than ever. Please support our work today.

Registered with



FUNDRAISING
REGULATOR



Canal &
River Trust

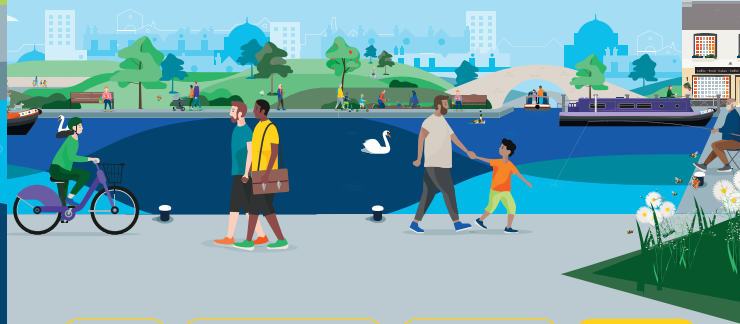
Making life better by water

Keeping history alive

After the Ellesmere Canal Company abandoned its plans to build an arm to Whitchurch in 1800, a group of businessmen worried that Grindley Brook, 2 miles (3km) from the town, might replace Whitchurch as the general market for the area so gave the canal company the money to undertake the work.

The first stretch of the Whitchurch Arm of the Llangollen Canal (formerly the Ellesmere Canal) to Sherryman's Bridge was built in 1808. By 1811 the arm had been extended into the town itself.

Discover lots of fun things to do
with the family by and on the water.
Go to canalrivertrust.org.uk/explorers



Enjoy

Take Action

Volunteer

Donate

canalrivertrust.org.uk

Registered charity no. 1146792

March 2023



Canal &
River Trust

Welcome to Whitchurch & Grindley Brook

A paradise for walkers.



We're the charity making life
better by water

Surrounded by beautiful countryside, this area is a paradise for walkers. Grindley Brook is the starting point for four long-distance footpaths – the Maelor, Shropshire Way, South Cheshire Way and the Sandstone Trail. Enjoy strolling by the canal or visiting independent shops and cafes in Whitchurch.

Find your way around

- towpath
- café
- pub
- shopping
- bench/picnic area
- point of interest
- nature reserve
- play area
- sailing
- parking
- railway station

Whitchurch Waterways Country Park, Chemistry, Whitchurch SY13 1DD

Allow 2–3 hours for your visit

Stay SAFE
Stay Away From the Edge!

For more information on visiting safely:
canalrivertrust.org.uk/safety

Details correct at time of print, please check before travelling.



5 things to do at Whitchurch & Grindley Brook

- 1** Follow the Sandstone Trail from Whitchurch to Grindley Brook.
- 2** Relax with a cup of coffee or a picnic and watch boats navigate Grindley Brook Locks.
- 3** Visit the Heritage Centre in Whitchurch and find out about the market town and area.
- 4** Chat with our friendly volunteer lock keepers, they'll tell you more about the history of this waterway.
- 5** Stroll along the towpath to New Mills Lift Bridge which lifts to let boats through.

Did you know?

Grindley Brook Locks are some of the busiest on our canals. Our volunteer lock keepers help over 6,000 boats make their way up or down the staircase each year.

