

## Caring for the Leeds & Liverpool Canal

We're the charity working to protect and bring to life this 250-year-old network of canals and rivers spanning England and Wales. Not so long ago many canals were abandoned, and some lost forever. Today, with your support, wildlife is recovering, history is alive, boats are plentiful and spending time in this environment is contributing to our health and happiness.

Our mission is to keep this extraordinary network of canals and rivers alive, teeming with wildlife, transforming places they run through and enriching all of our lives. Your support today could help us care for the Leeds & Liverpool Canal and many more places, for today and generations to come.

DONATE



Please support  
our work &  
donate today

SCAN ME



The task of protecting the finest examples of working industrial heritage including the Leeds & Liverpool Canal, and the wildlife that calls it home, is growing all the time. As a charity we need you by our side more than ever. Please support our work today.

Registered with



FUNDRAISING  
REGULATOR



Canal &  
River Trust

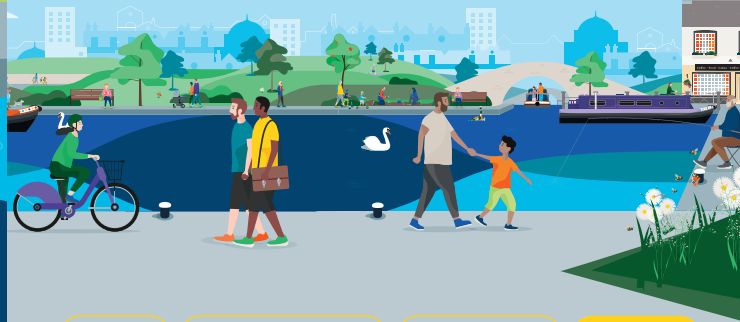
Making life better by water

## Keeping history alive

The Leeds & Liverpool Canal is Britain's longest inland waterway, stretching 127 miles (204 km). The canal took 46 years to build and opened in 1816. The first stretch of the canal to open was the lock-free stretch from Skipton to Bingley in 1773.

Springs Branch was built so limestone from local quarries could be transported from Skipton to Leeds.

Discover lots of fun things to do  
with the family by and on the water.  
Go to [canalrivertrust.org.uk/explorers](https://canalrivertrust.org.uk/explorers)



Enjoy

Take Action

Volunteer

Donate

[canalrivertrust.org.uk](https://canalrivertrust.org.uk)

Registered charity no. 1146792

March 2023



Canal &  
River Trust

## Welcome to Skipton

Gateway to the Yorkshire Dales.



We're the charity making life  
better by water

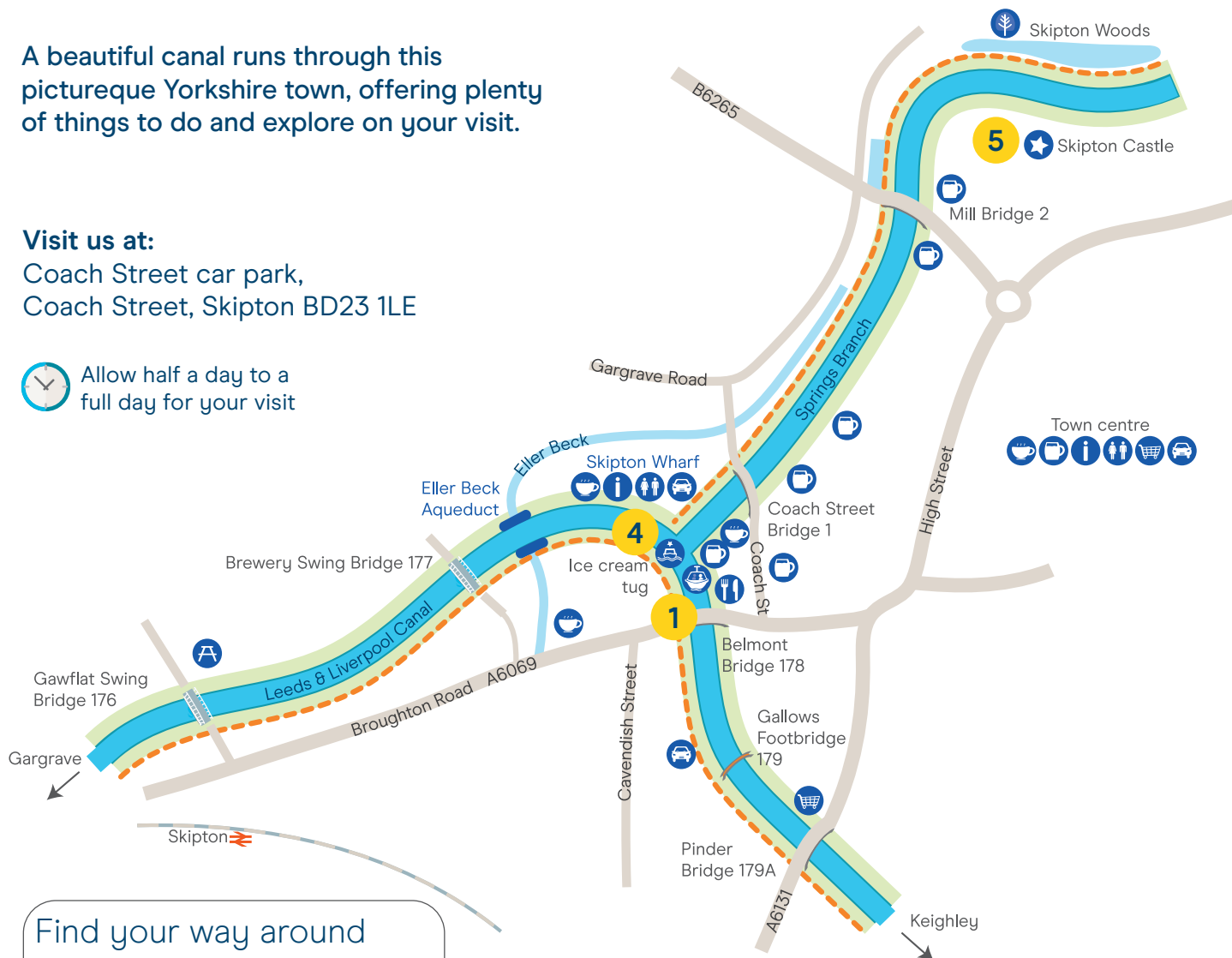
A beautiful canal runs through this picturesque Yorkshire town, offering plenty of things to do and explore on your visit.

#### Visit us at:

Coach Street car park,  
Coach Street, Skipton BD23 1LE



Allow half a day to a full day for your visit



#### Find your way around

- towpath
- aqueduct
- swing bridge
- café
- pub
- food & drink
- toilets
- shopping
- bench/picnic area
- point of interest
- information
- trip boat
- trading boat
- woodland
- parking
- railway station



Map not to scale:  
covers approx.  
1 mile / 1.6km

#### Stay SAFE

Stay Away From the Edge!

For more information on visiting safely:  
[canalrivertrust.org.uk/safety](http://canalrivertrust.org.uk/safety)

Details correct at time of print, please check before travelling.

## 5 things to do in Skipton

- 1** Take a boat trip and discover more about the Leeds & Liverpool Canal.
- 2** Enjoy one of the many walks along the canal and explore some of the best open countryside anywhere on England's canal network.
- 3** Cycle to Greenberfield Locks – the summit of the Leeds & Liverpool Canal and border with Lancashire.
- 4** Try an ice cream or a cool drink from the ice cream tug boat, or explore the high street with independent shops and bustling market.
- 5** Visit Skipton Castle which was built in 1090 and is one of the most complete and best-preserved medieval castles in England.

### Did you know?

Springs Branch is also known as Thanet Canal after Lord Thanet who paid for the waterway to be built to connect Skipton with the Leeds & Liverpool Canal.

