

Caring for the Grand Union Canal

We're the charity working to protect and bring to life this 250-year-old network of canals and rivers spanning England and Wales. Not so long ago many canals were abandoned, and some lost forever. Today, with your support, wildlife is recovering, history is alive, boats are plentiful and spending time in this environment is contributing to our health and happiness.

Our mission is to keep this extraordinary network of canals and rivers alive, teeming with wildlife, transforming places they run through and enriching all of our lives. Your support today could help us care for the Grand Union Canal and many more places, for today and generations to come.

DONATE



Please support
our work &
donate today

SCAN ME



The task of protecting the finest examples of working industrial heritage including Hatton Locks, and the wildlife that calls it home, is growing all the time. As a charity we need you by our side more than ever. Please support our work today.

Registered with



FUNDRAISING
REGULATOR



Canal &
River Trust

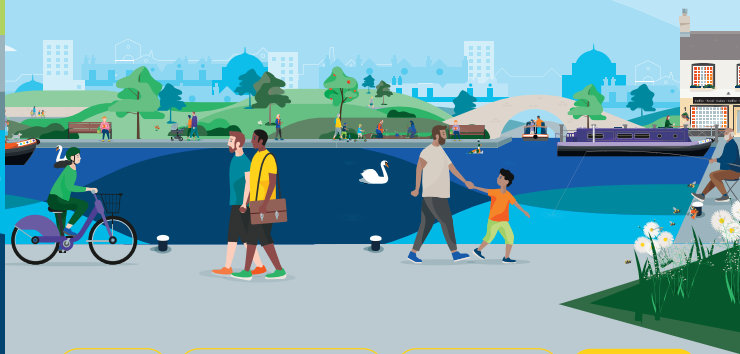
Making life better by water

Keeping history alive

Today, Hatton Locks are situated on the Grand Union Canal but when the waterway opened in 1799 it was known as the Warwick & Birmingham Canal. The canal was one of eight different canals connecting London with the Midlands.

Each canal was owned by a different canal company until 1929 when the Grand Union Canal Company took over the entire route and re-named it the Grand Union Canal.

Discover lots of fun things to do
with the family by and on the water.
Go to canalrivertrust.org.uk/explorers



Enjoy

Take Action

Volunteer

Donate

canalrivertrust.org.uk

Registered charity no. 1146792

March 2023



Canal &
River Trust

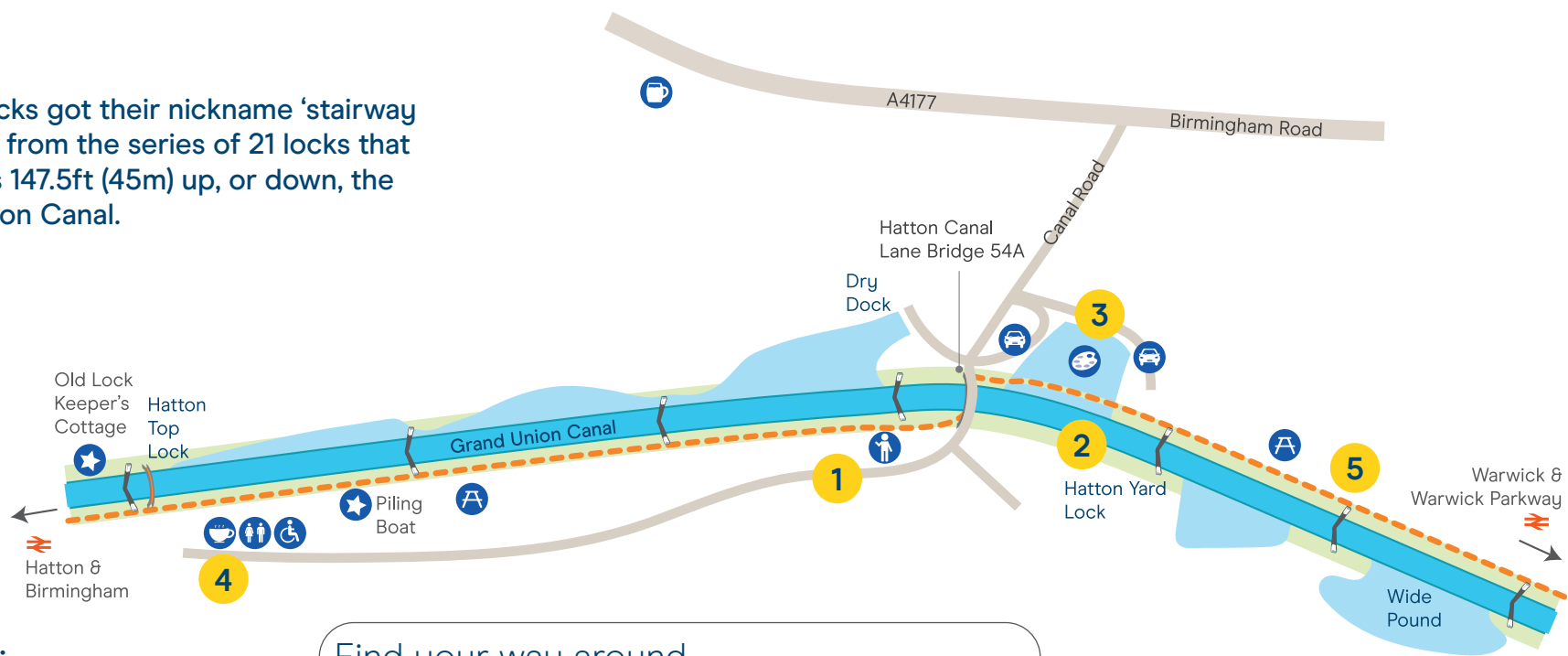
Welcome to Hatton Locks

Warwickshire's 'stairway to heaven'.



We're the charity making life
better by water

Hatton Locks got their nickname 'stairway to heaven' from the series of 21 locks that take boats 147.5ft (45m) up, or down, the Grand Union Canal.



N
Map not to scale:
covers approx.
½ mile / 0.8km

Visit us at:
Hatton Locks, Canal Road,
Warwick CV35 7JL

Allow 2–3 hours
for this visit

Find your way around

- | | | |
|---------|---------------------------------|-----------------|
| towpath | bench/picnic area | accessible |
| café | point of interest | parking |
| pub | art installation | railway station |
| toilets | Canal & River Trust Welcome Hub | |

Stay SAFE
Stay Away From the Edge!

For more information on visiting safely:
canalrivertrust.org.uk/safety

Details correct at time of print, please check before travelling.

5 things to do at Hatton Locks

- 1 Discover** more about the history of the area from our friendly volunteers at our welcome hub.
- 2 See** if you can see heritage working boats 'Malus' or 'Scorpio'. These boats once worked this route and have been restored as part of our Heritage Lottery Funded Working Boats Project.
- 3 Follow** the wildlife trail along the lock flight.
- 4 Enjoy** a coffee at the cafe by the locks at the top lock and enjoy being by water.
- 5 Get on your bike** for the 2-mile/3km (4-mile/6.5km return) traffic-free bike ride along the locks.

Did you know?

The locks at Hatton were widened in 1929 to accommodate larger boats in an attempt to ward off competition from road and rail. It took over 1,000 men three years to complete the work which involved using concrete – a revolutionary new material in canal building.

