

## Caring for Gunthorpe Lock

We're the charity working to protect and bring to life this 250-year-old network of canals and rivers spanning England and Wales. Not so long ago many canals were abandoned, and some lost forever. Today, with your support, wildlife is recovering, history is alive, boats are plentiful and spending time in this environment is contributing to our health and happiness.

Our mission is to keep this extraordinary network of canals and rivers alive, teeming with wildlife, transforming places they run through and enriching all of our lives. Your support today could help us care for Gunthorpe Lock and many more places, for today and generations to come.



DONATE



Please support our work & donate today

SCAN ME



Canal & River Trust

Making life better by water

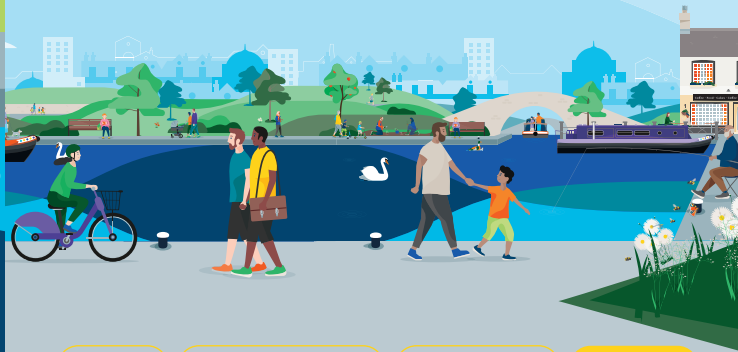
## Keeping history alive

The River Trent was once an important trading route, linking the Midlands and the Humber estuary. During the 19th century, Gunthorpe Lock would have been busy with flat-bottomed barges called ketches transporting goods across the country.

Gunthorpe Lock was built to take up to four ketches at a time and is one of the largest locks on the river.

You can still see boats carrying cargo along the River Trent today, but you are more likely to spot holiday boats and day-trippers enjoying a slower pace of life.

Discover lots of fun things to do with the family by and on the water. Go to [canalrivertrust.org.uk/explorers](https://canalrivertrust.org.uk/explorers)



Enjoy

Take Action

Volunteer

Donate

[canalrivertrust.org.uk](https://canalrivertrust.org.uk)

Registered charity no. 1146792

March 2023



Canal & River Trust

## Welcome to Gunthorpe Lock

The perfect place for waterside walks.



We're the charity making life better by water

The task of protecting the finest examples of working industrial heritage including Gunthorpe Lock, and the wildlife that calls it home, is growing all the time. As a charity we need you by our side more than ever. Please support our work today.

Registered with










FUNDRAISING  
REGULATOR

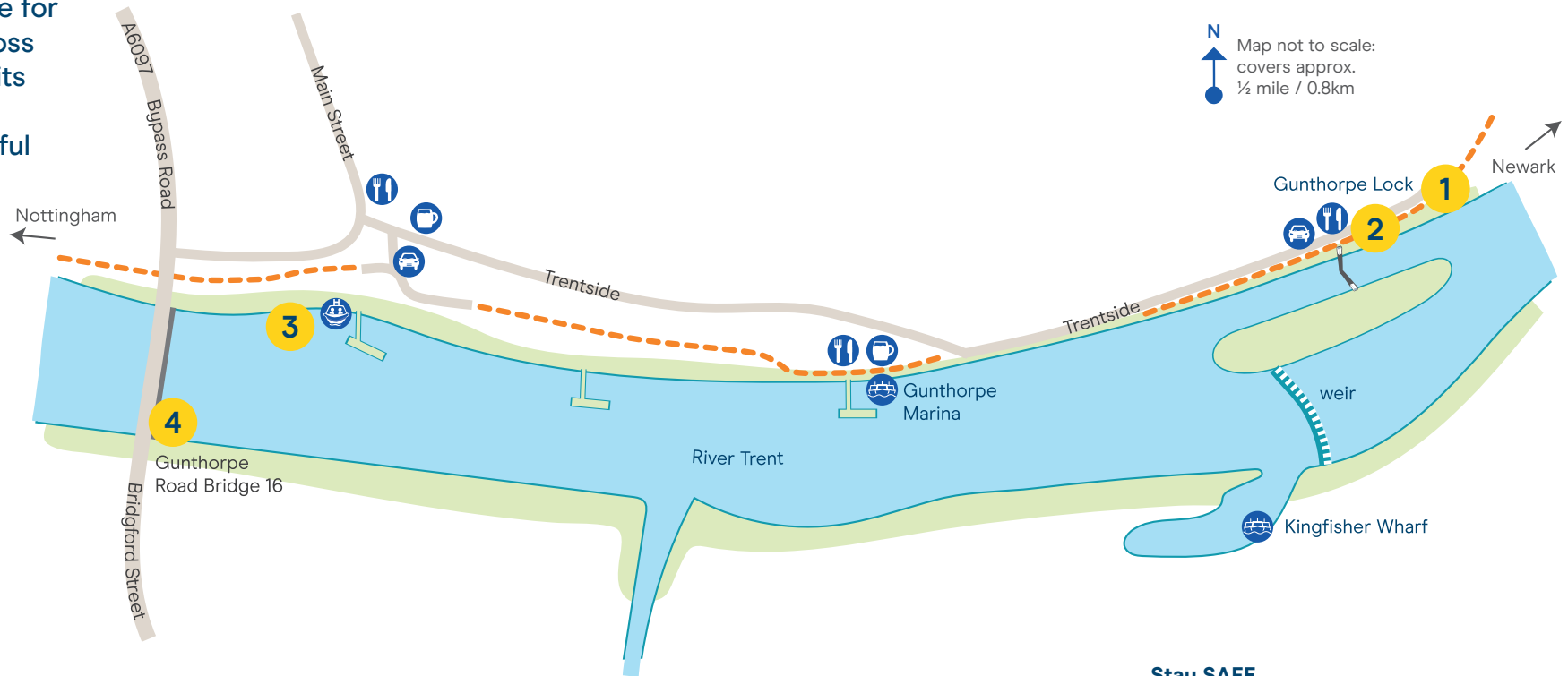
Once a busy thoroughfare for boats carrying cargo across the country, today, with its waterside walks, a visit to Gunthorpe Lock is a blissful way to pass a few hours.

Visit us at:  
Gunthorpe Lock,  
Trentside, Gunthorpe  
NG14 7FB

### Find your way around

-  towpath
-  pub
-  food & drink
-  boat hire
-  marina
-  parking

 Allow 1-1½ hours for your visit



N  
Map not to scale:  
covers approx.  
½ mile / 0.8km

Details correct at time of print, please check before travelling.

**Stay SAFE**  
Stay Away From the Edge!

For more information on visiting safely:  
[canalrivertrust.org.uk/safety](http://canalrivertrust.org.uk/safety)

## 5 things to do at Gunthorpe Lock

- 1 Pause** for a few moments and watch different boats make their way through the lock
- 2 Stop** for a coffee or a bite to eat and enjoy spending time by water.
- 3 Take** a boat trip up the river into the centre of Nottingham.
- 4 Walk** to the historic Gunthorpe Bridge. Until it was built in the 1870s, the only way to cross the river was by ferry or ford (the present bridge was built in 1927).
- 5 Stroll** along the towpath and watch the waterbirds on the river.

### Did you know?

Queen Boudica is said to have defeated the Roman IX Legion near Gunthorpe in the 1st century AD.

