

LDĀ DESIGN

Designers of the London 2012 Olympic Parklands

The Fresh Aire Programme

Pilot Project Identification

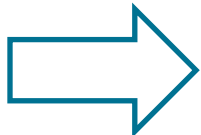
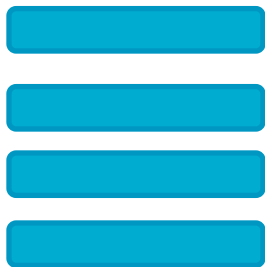
January 2014

Fresh Aire Vision

Fresh Aire is a green infrastructure led regeneration programme of a remarkable post-industrial river landscape at the heart of the Leeds City Region. The project is an international demonstrator for cutting edge green urban design and ecologically sound solutions to flood risk and water quality management.

The Sieve Process

Sieve 1



Sieve 2



Sieve 3



Identifying projects that:

- do not currently have funding
- lack a clear delivery mechanism
- are clearly defined with specific and identifiable outcomes

Identifies projects that:

- are bold, ambitious and capable of creating a strong impact on the area
- deliverable within the next ten years
- specific to the project area
- perform well in contributing to the delivery of the Fresh Aire Vision and the objectives that underpin it

Considers spatial characteristics of project and identifies projects that:

- contribute to the delivery of a linked network of site specific investments
- start to realise at least one of the key objectives of the Fresh Aire Vision to create a Valley Park for the Leeds City Region

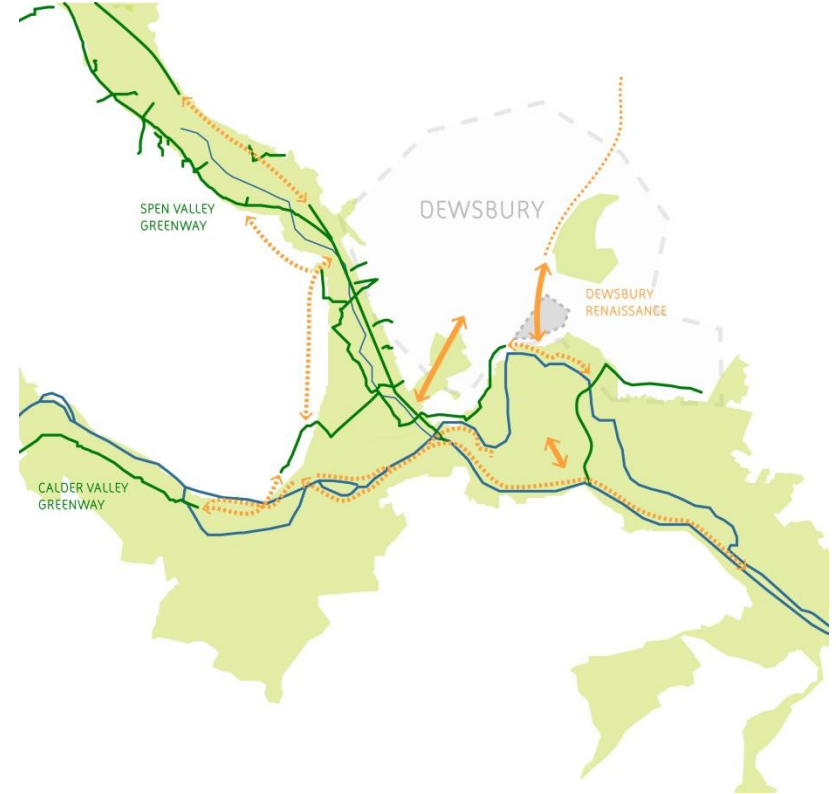
Objective 1

The Fresh Aire Programme will promote the economic development of the Leeds City Region and its status on the international stage through the creation of the Aire-Calder Valley Park

- Dewsbury Renaissance
 - Leeds South Bank
 - (incorporating projects such as early deliverables of the Leeds City Centre Park and improved connectivity e.g. Holbeck Viaduct)
 - Kirkstall Valley Park
-

Dewsbury Renaissance

- Joined-up walking and cycling routes improving access to workplaces, jobs and open spaces
- Increasing connectivity to the town centre and opening up access to the waterways
- Tree-lined routes and high quality environment attracts business growth and people
- Recreational opportunities associated with waterways, greenways and open spaces



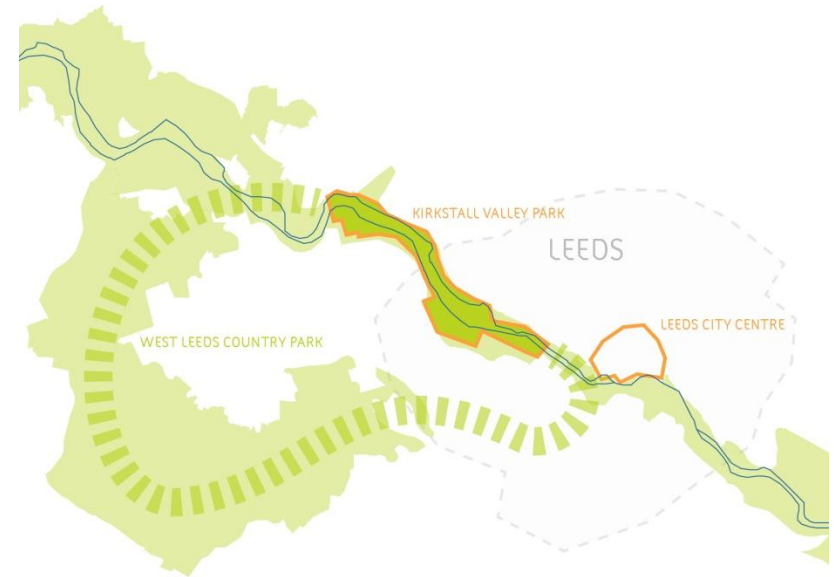
Leeds South Bank

- GI unlocking the economic potential of the Leeds South Bank
- Increasing permeability between key growth areas and the city centre
- A Fresh Aire Icon that fuses green infrastructure and economic opportunity
- A programme of parks and green corridors that are rich in biodiversity and recreational value, improve accessibility, and attract investment and development



Kirkstall Valley Park

- The Aire Valley's main park linking the urban area and countryside forming a gateway to the West Leeds Country Park
- Giving impetus to a community led project
- A concentration of increased tree cover contributing towards the urban cooling and greening of Leeds city
- New habitats and migratory corridors enrich biodiversity, mitigate flooding and improve quality of life
- Enhancement of heritage features and their settings



Objective 2

The Fresh Aire Programme will seek to create an international demonstrator of best practice measures to improve water quality, mitigate the impacts of flooding and renew watercourse infrastructure

- Fresh Water
(incorporating Leeds Liverpool SSSI, Mickletown Ings SSSI, Non-native Invasive Species, Floating Pennywort, Aire Valley Crassula helmsii Control Programme)
 - The Source
-

Fresh Water

- An international exemplar of water quality enhancement
- Improving existing habitats and restoring ecological balance to enrich biodiversity
- Soft engineered solutions that mitigate flooding and create new areas of rare habitat



The Source

- An internationally significant partnership-led exemplar of GI delivery by implementing flood control techniques in the upper river catchments
- A concentration of increased tree cover slowing and reducing run-off and improving air and water quality
- Creating new areas of habitat and new recreation opportunities including 'wild swimming pools'
- Evidenced based strengthening science related to climate change mitigation infrastructure



Image: Jean-Sebastien Veilleux

Objective 3

The Fresh Aire Programme will create a bio-diverse green corridor at the heart of Leeds City Region that allows flora and fauna adapt to climate change and provides residents of the catchment with easy access to the natural environment.

- Fish Passes
(incorporating Knottingley, Armley, Kirkstall Abbey, Newlay, Saltaire, Chapel Haddlesey, Gargrave Weir and Dark Arches)
 - Skelton Lake and Wyke Beck
-

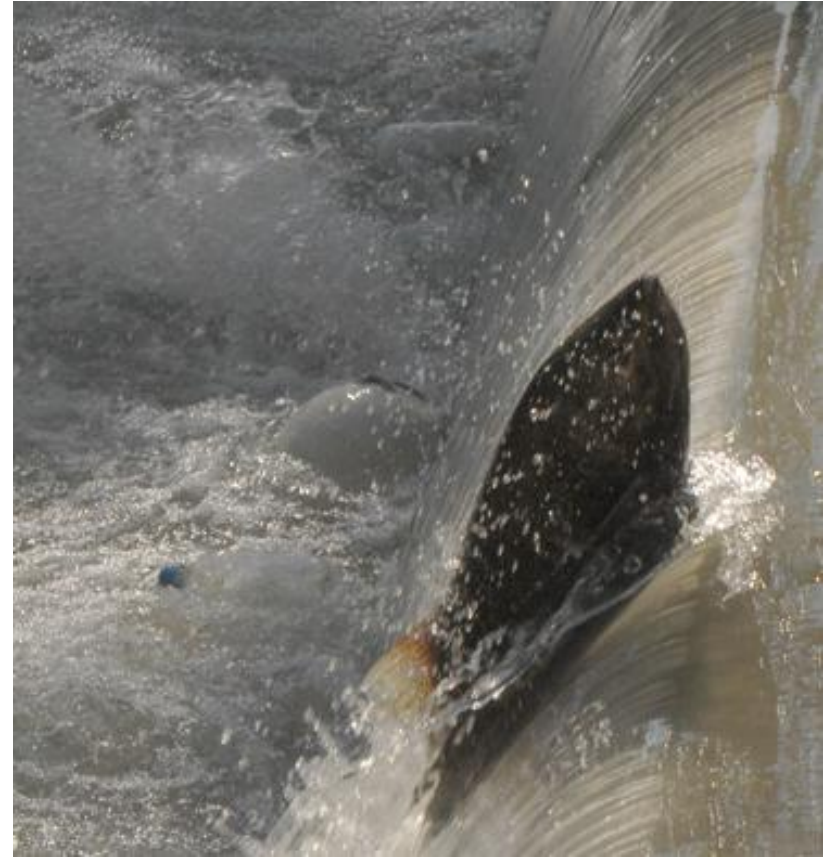
Skelton Lake and Wyke Beck

- A nationally significant pilot for biodiversity enhancement and offsetting through major economic development
 - Strategically located between the Aire Valley Leeds Enterprise Zone, St Aidan's RSPB site and Rothwell Country Park
 - Restoration, protection and creation of rare habitats, conservation areas and education opportunities
 - New pathways and linkages which provide access to nature and unique recreation opportunities
 - Best practice soft water engineering
-



Fish Passes

- Re-introducing the salmon, re-branding the river
- GI delivery through innovative water infrastructure engineering and design
- Establishing the river as a major attraction by enriching biodiversity and restoring ecological balance



Objective 4

The Fresh Aire Programme will provide a highly accessible, safe, easily navigated and attractive environment encouraging people to move along the Aire and Calder Valleys on foot or by bike.

- Linking the Aire and Calder

(incorporating Wakefield Towpath, Huddersfield Broad Canal, Bradford Towpaths, Pontefract Connect, Wyke Beck Valley, Brighouse to Bradley Cycleway, Fresh Aire Arts and Heritage Trail, Steeton to Silsden Connectivity Improvements, Leeds Liverpool Canal Towpath Improvements, Hunslet Riverside, East Bank and Richmond Hill)

- Green Streets

Linking The Aire and Calder

- A programme of investment in sustainable accessibility
- Coordinating investment to deliver a joined up, linked and cohesive cycle and pedestrian network through the Aire and Calder Valleys
- High quality routes enriched with art and structures which celebrate local heritage encouraging recreational use of the waterways and sustainable transport
- Tree-lined routes which form part of a growing SUDs scheme improving water quality, reducing flooding and enriching biodiversity



Green Streets

- Green infrastructure delivery through innovative transport infrastructure planning and design
- Improved visual amenity to attract inward investment and promote access to work
- Tree lined routes and integrated green spaces to improve air quality and reduce surface water flooding



Spatial Plan

