



**Tell Us
What You
Think**

Strategic Waterway Plan

Inspired...you will be!

A discussion document

North West Waterway Partnership



**Canal &
River Trust**

Contents

Tell Us What You Think

Please read this document through the lens of your community, organisation or user interests.

*Come back to us with comments by **29 November 2013** with how its objectives, priorities and actions fit with your aspirations - or how they could fit better!*

Welcome	03
Canal & River Trust:	
Our Role and Objectives	04
Our Strategic Priorities	05
Our Resources	06
Our Governance	07
Our Waterway Partnerships	08
North West Waterway Partnership:	
Our Waterways: Unique and Diverse	10
Lancaster Canal and the Ribble Link	11
Leeds & Liverpool Canal West	12
Pennine Lancashire	13
Gateway to the Dales	14
Leeds & Liverpool Canal East	15
Sharing our Plans for the Future	
Our Vision	16
Our Objectives	17
Our Partnership	21
Next Steps and How to get involved	22

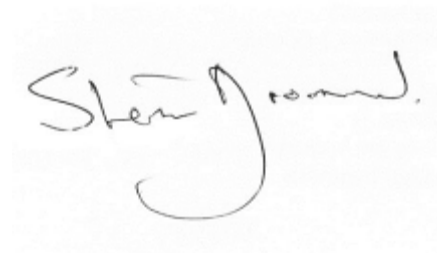
Welcome

The canals of the North West are an important part of our living heritage, they are integral to the communities through which they run and they have the potential to change lives through volunteering, education, recreation and leisure. We in the North West Partnership believe these canals are yours to enjoy and we want your views on how you want to see them developed and enhanced.

Through this plan I am pleased to be able to share with you the North West Partnership's aspirations for our wonderful waterways, including the Leeds & Liverpool Canal, Lancaster Canal, the Ribble Link, the Liverpool Canal Link and the magnificent Liverpool South Docks.

The Partnership is currently working to finalise its Strategic Plan and is committed to ensuring that everyone has their say about the waterways and how we make them a vibrant and vital part of community life. Whether you live, work or relax along our waterways we want to hear your views.

Our waterways play a vital part in community life and in the local economy and we want to develop our plans to ensure that we provide a safe, accessible and welcoming environment so that even more people visit and enjoy what we have to offer.

A handwritten signature in black ink, reading "Steve Broomhead". The signature is written in a cursive style with a large, sweeping "S" and "B".

Steve Broomhead

North West Partnership Chair

Canal & River Trust: Our Role and Vision

The Canal & River Trust was established by Parliament in July 2012. It has responsibility for canals, rivers, docks and reservoirs, along with historic buildings, archives and three waterway museums, including the National Waterways Museum.

These assets are recognised as a national treasure and a local haven for people and wildlife. They are held and managed by the new Trust on behalf of the nation. The principle role of the Trust is to care for this unique legacy, holding it in trust for the nation in perpetuity.

The Trust will act as guardian for the canals and rivers of England and Wales - ensuring that history, nature and communities are central to everything it does.



“A sustainable and evolving canal and river network that is a national treasure - accessible to and cherished by all”

Canal & River Trust, 2012



Canal & River Trust: Our Strategic Priorities

Almost 50% of the population of England and Wales live within five miles of our network of canals, rivers and towpaths. The network is cherished by millions of visitors, neighbours and communities, yet it has been difficult in the past for many people to get involved in shaping its future. We intend to change that.

The true potential of our canals and rivers and their long term survival will only be secured if the new Trust fully engages and works with visitors, users, neighbours, business partners and local authorities, including parish, town and community councils.

Our priority is to widen the enjoyment of our waterways today, whilst protecting them for future generations.

The Trustees have set out in a document entitled *'Shaping our Future - Strategic Priorities - Keeping People, History and Nature Connected'* (July 2012) six strategic priorities aimed at unlocking this potential:



Ensuring our canals and rivers are open, accessible and safe



Inspiring more people to enjoy the canals and rivers and support our work



Earning financial security for our canals and rivers



Doing everything we can to deliver on our charitable objectives



Minimising the impact we make on scarce resources



Establishing the Trust as a respected and trusted guardian of our canals and rivers

Canal & River Trust:

Our Resources

Nationally, we have:

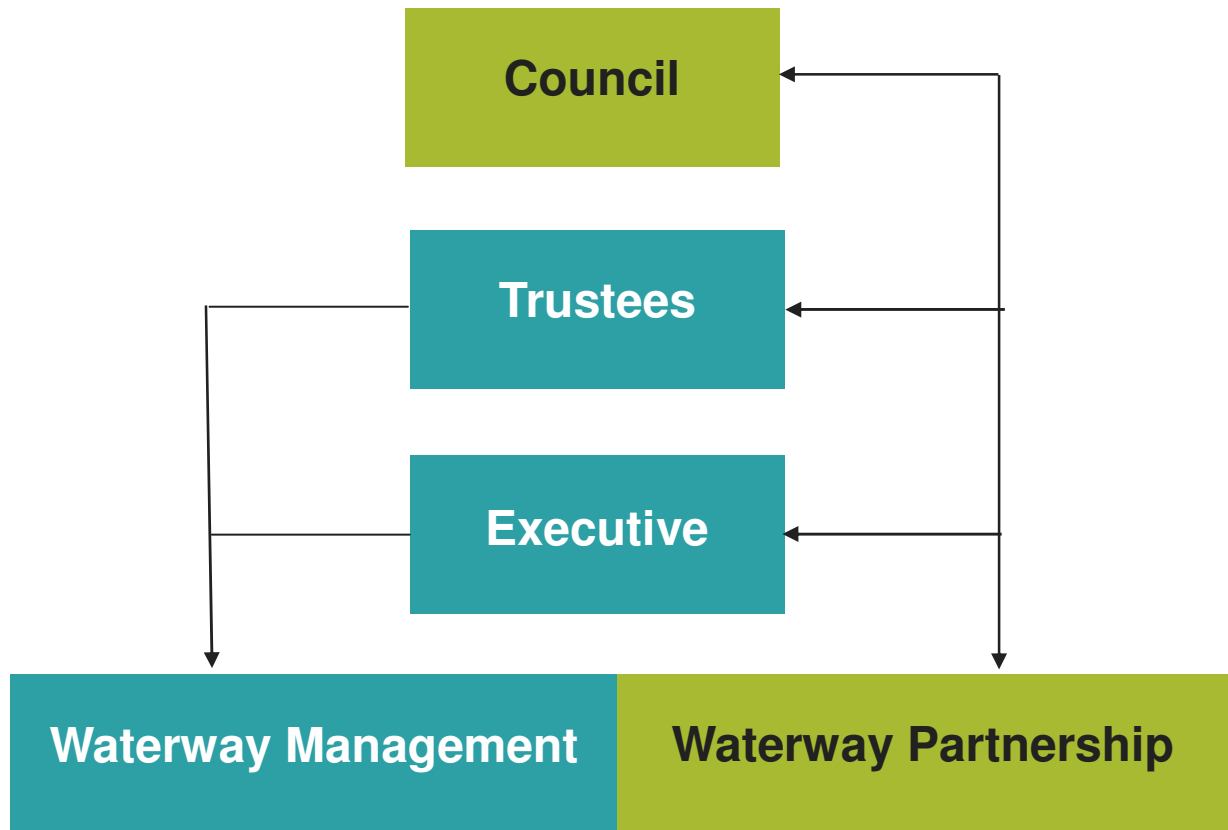
- an annual income of £120m
- 800 operational staff whose role it is to ensure that the physical
- infrastructure which is maintained and developed
- 2,727 Listed Buildings, we are the third largest owner of Listed Structures in the UK
- 2,000 miles of historic urban and rural canals, rivers, reservoirs and docks
- 200 miles of waterways re-opened in the last decade
- 1,000 wildlife conservation sites and 400 miles of Conservation Area
- 35,200 licensed boats on the network - 2010/11
- (more than at the height of the Industrial Revolution)

Our income is derived from a wide range of sources:

- Individual donors and corporate sponsors;
- commercial income including revenue from the licensing of boats,
- moorings and angling; and revenue from property and utilities;
- grants from the other organisations; and
- our 15 year contract with government.



Canal & River Trust: Our Governance



Canal & River Trust: Our Waterway Partnerships

We need to manage our canals and rivers as one network, with common policies across England and Wales in order to allocate resources where they are most needed and to be most efficient and effective. However, the opportunities for joint working, as well as the obstacles to better use and enjoyment of our canals and rivers, lie in understanding individual stretches of waterway and working with localities and local partners, agencies and businesses.

That is why new Waterway Partnerships have been established, across England and Wales, to bring together representatives of local communities, businesses and organisations to work closely with the Canal & River Trust to influence and add value to what we do in each area.

Canal & River Trust:

The North West

Waterway Partnership

Who are we?

We are a group of volunteers from public, private and community organisations with a range of professional, community, waterway interests and skills. Amongst these are strategic planning, community engagement, voluntary sector, tourism, business, boating, and sport including canoeing.

Find out more about Partnership members at canalrivertrust.org.uk/noticeboards/north-west-waterways/whos-who

What are we here for?

- To promote the knowledge of, and use of, waterways in the region
- To understand the issues facing communities and develop the waterways to play their part in community life
- To shape future plans for the waterways and deliver on our own or in partnership with others
- To help secure resources to achieve these plans
- To ensure the job gets done

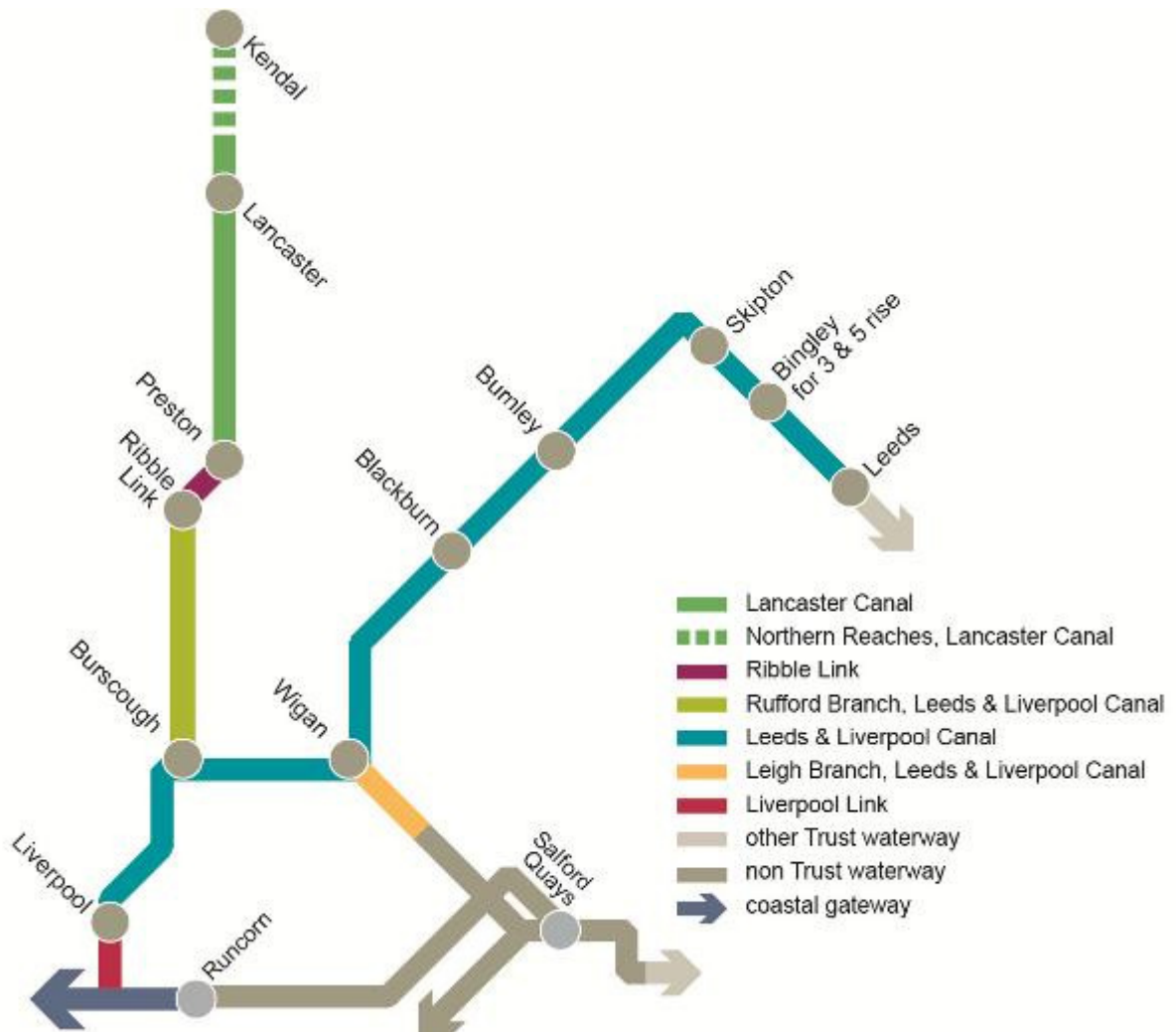
How will we do the job?

- By taking a view of the evidence and data held by the Trust and others about the waterways and its impact on local communities
- By talking to as many people as we can who have a view, or who are interested in working with this, or who may be potential partners
- Exploring opportunities to get the best return on our investment
- By capturing this in a long term Strategic Waterway Plan
- By channelling the resources, expertise and skills of the Canal & River Trust, its partners, agencies and local communities to meet our objectives
- By implementing the plan on the basis of common purpose and shared benefit

Strategic Waterway Plan:

The partnership is currently preparing its plan. In the following pages we have set out our initial thoughts and points for discussion. It is the starting point for a structured conversation with you. It is a genuine conversation.

We are looking to involve you and to take on board your views about how best we can work together on one question: what action would do the best job for the waterways, their many users and supporters, and the communities they enrich and belong to?



Our Waterways: Unique and Diverse

The North West is home to a diverse range of waterways spanning the county borders of Merseyside, Greater Manchester, Lancashire and Yorkshire, linking many urban centres with the tranquillity of some of the nation's finest countryside.

The North West's inland waterways offer unique opportunities to waterside communities, businesses and tourists from around the world.

It is estimated that the North West waterways attract 65 million visitors a year out of the 300m annual visits to the waterways of England and Wales.

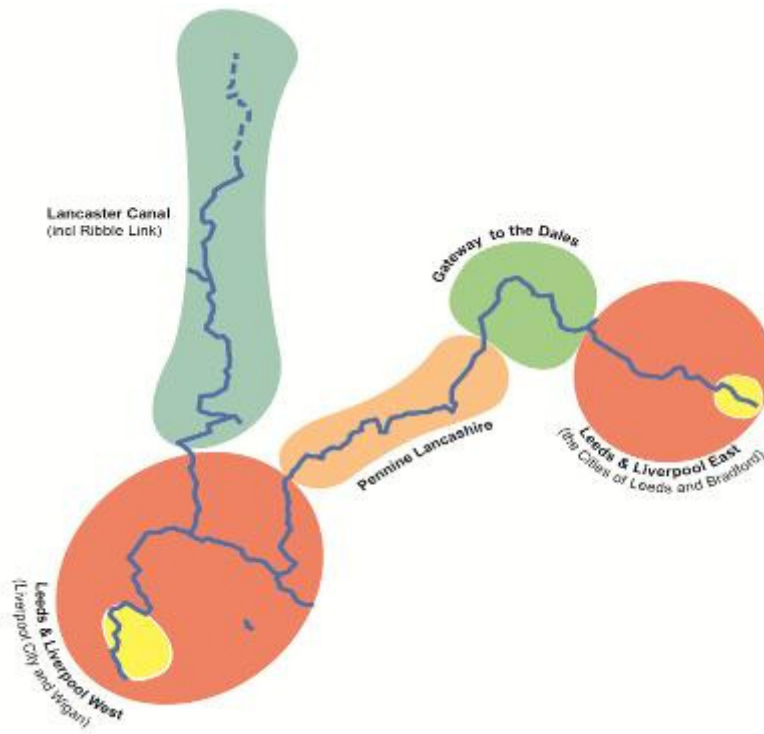
We believe that there is potential for this number to grow and make an important contribution to the economy and quality of life here in the North West.

Waterways act as a tremendous catalyst to regeneration, helping to tackle social and economic challenges and contributing to healthy vibrant communities.

Our waterways flow through a range of localities, from dense conurbations to rural villages. In recognition of these differences we have considered the region as five distinct areas.



Character areas:



© Crown copyright and database rights, 2013, Ordnance Survey 100022432. © Next Perspectives, 2013

Lancaster Canal and the Ribble Link

Originally running from Preston to the centre of Kendal, the Lancaster Canal is now limited to a navigable length of 42 miles between Preston and Tewitfield as a result of the building of the M6 motorway North of Preston in the mid 1960s.

The canal is very popular with boaters and walkers as it offers beautiful cruising on a lock free length. To the north the unrestored original canal line between Tewitfield and Stainton remains in water intermittently, and though currently not available for boating, it offers a tranquil countryside leisure resource. The canal route to Kendal is still protected and is popular for walking and cycling.

The magnificent Grade I Lune Aqueduct spans the river just North of Lancaster and has recently been restored with a grant from the Heritage Lottery Fund.

At Glasson Docks the canal links to the river Lune at Glasson Basin. This is a popular tourist destination with a yacht and narrowboat marina for over 200 boats. Glasson Dock is also a Scheduled Ancient Monument

With large centres of population within the cities of Preston and Lancaster the remainder of the canal is a predominantly rural waterway, it is now linked to the national network by the Ribble Link.



Leeds & Liverpool West (Liverpool City and Wigan)

Construction of the Leeds & Liverpool Canal began at Halsall, West Lancashire on 5 November 1770, with the first sod being dug by the Honourable Charles Mordaunt of Halsall Hall. The section from Liverpool to Newburgh was the original phase to be completed, reaching Wigan by 1781. The Rufford branch was completed in the same year.

This character area runs from Liverpool and Bootle through predominantly urban communities to Wigan and Chorley. Its location means it has the potential to contribute to the regeneration of these local communities. The canal also has the capacity to deal with an increased number of boats.

In 2005 the Leeds & Liverpool Canal was linked to Liverpool South Docks with the construction of the Liverpool Canal Link, which has led to an increase in boat visits.

In Liverpool we have developed a Waterspace Strategy which will further animate the docks with a variety of used which compliment the strategic offer at the waterfront, a copy can be viewed here;

<http://canalrivertrust.org.uk/media/library/2192.pdf>

Pennine Lancashire

Representing the northern industrial heartlands the Pennine Lancashire canal corridor is surrounded by busy communities. The canal once the centre of 19th century trade is now perfectly positioned to support local regeneration and to provide a relaxing escape from hectic lifestyles.

Running through the centres of Pendle, Blackburn with Darwen, Hyndburn and Burnley, the canal has the potential to deliver on economic growth through tourism and the associated support industries such as marine businesses.

The historic Weavers Triangle in Burnley is undergoing a transformation supported by a network of partners, the private sector and a supportive local council.

Working with local communities the Trust has secured a £2m Arts Council grant to develop art in the Pennine Lancashire area with delivery commencing in 2014.

The historical landscape is quite unique and offers great potential. We already have good connectivity with cycling and walking routes and host many popular volunteering activities.



Gateway to the Dales

Across the border into Yorkshire is a very attractive and popular part of the Leeds & Liverpool Canal centred on the market town of Skipton, known as the gateway to the Yorkshire Dales. Skipton has an award winning High Street and market, as well as a 12th century castle.

A busy part of the canal network and popular cruising destination, there is potential to encourage the many visitors to this area to extend their voyage of discovery across into the rich industrial heritage of Pennine Lancashire or onwards to Leeds and Bradford.

The picturesque canal town is a centre for hire boating and is focussed on the canal junction.

As there are opportunities to extend the linkages with other local attractions and National Parks, Skipton is a key destination for this canal.



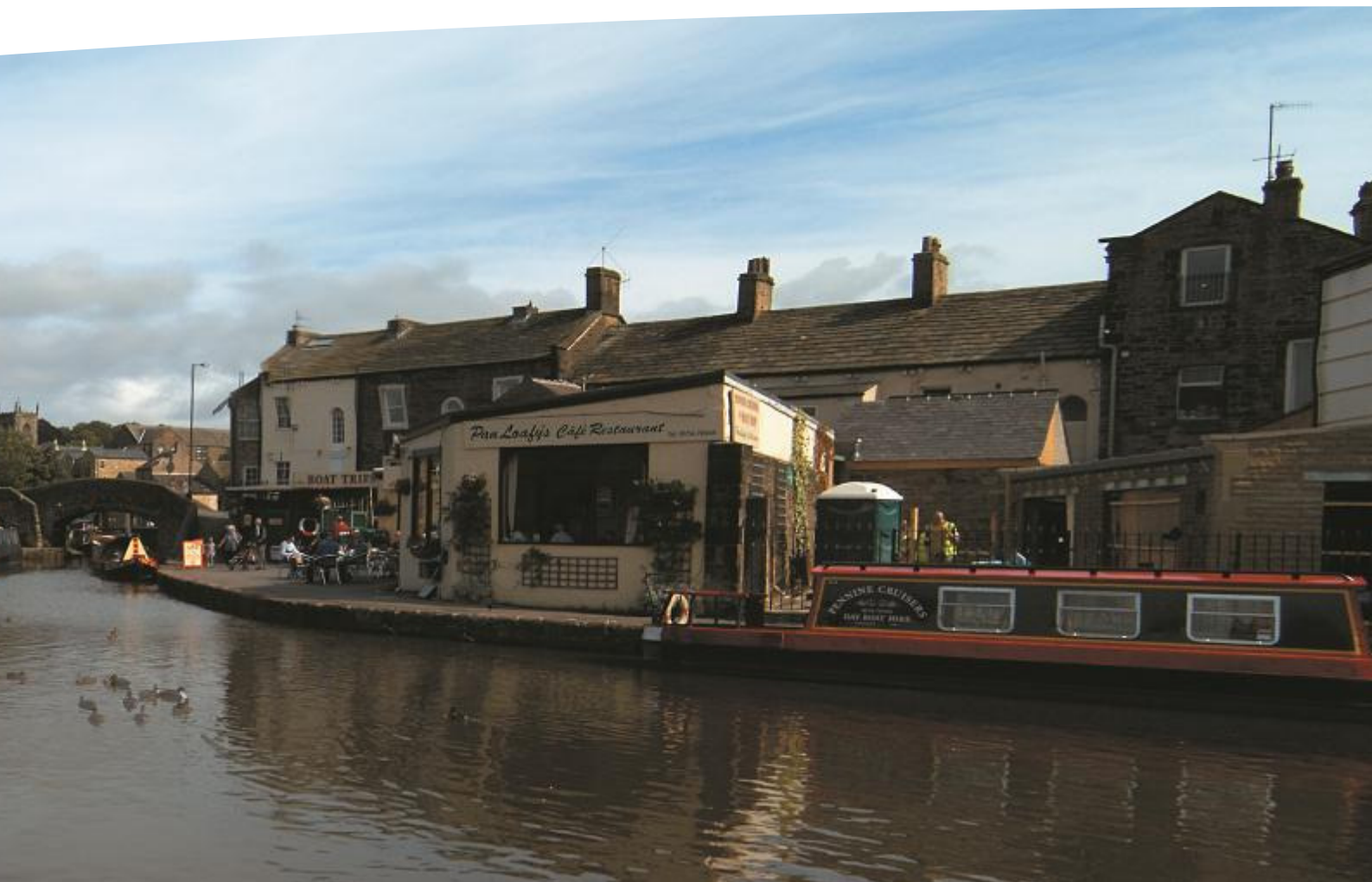
Leeds & Liverpool East

(including the cities of Leeds and Bradford)

Continuing its journey from the Dales towards Bradford and Leeds, the Leeds & Liverpool Canal first winds its way through beautiful countryside before passing through many locks starting with the Grade II listed Bingley Five Rise, to reach the urban centres and its junction with the Aire & Calder Navigation at Granary Basin, Leeds.

The World Heritage Site at Saltaire borders the canal, and the canal structures, such as the Grade II listed Dowley Gap Aqueduct and several two and three rise staircase locks, are built of stone on a grand scale.

The canal is truly a hidden treasure to be shared. Recent improvements include the development of a digital trail at the Bingley locks linking heritage with the 21st century and there are four sections of the Trans Pennine Trail in the area.





Sharing Our Plans for the Future

We are putting together plans to make sure that our waterways are used and developed in a way that has maximum benefit for our local people, places and local economies.

Our Objectives

1. We want to connect people with their local waterways so they become inviting, accessible and relevant to, and valued and supported by, everyone.

What do you think?

- What do we need to do to engage more with our local communities and grow volunteering?
- How can we encourage those who don't make use of their local canals to get involved?
- Who should we be working with to engage children and young people to use the canals so they become future supports of the canals?
- How can we increase the diversity of those using our waterways?

***Super Slow Way* will bring local people, local businesses and amazing artists together. We'll embark on a creative adventure, discovering new things to do, see and be part of, using a £2m investment from Arts Council England's Creative People and Places fund on the Leeds & Liverpool Canal, running from Blackburn to Pendle.**

Our Objectives

2. We want to connect communities with their local waterways so they provide places for everyone on their doorstep to improve their health and wellbeing.

What do you think?

- How can we encourage more adults and children to enjoy our waterways for recreation and learning?
- How can we make our network an integral part of the safe and healthy routes to school and work?
- How can we encourage use of the canals for training and developing the skills base of local people to help revitalise deprived communities and neighbourhoods?



We are currently developing a canoe trail for the Leeds & Liverpool canal in conjunction with Canoe England and Burnley Council.

3. We want to work with others to unlock the potential of the waterways so that they support local ambitions and greater economic growth.

What do you think?

- How can we encourage greater use and activity on and along the canals as part of the strategic and local sustainable transport routes?
- How should the waterway related tourism and leisure offer be improved to increase visitor numbers, satisfaction and to improve the 'day out' offer at key locations?
- What can we do to increase use of underused sections of the canals to attract more frequent and longer visits to the canals?
- What is needed to promote and support existing and new water dependent businesses and enterprises to flourish?
- What improvements do we need to make to ensure our waterway environment delivers maximum benefit and is conserved for future generations?



Our Objectives

4. We want to make the canals and historic docks in our area welcoming and interesting places to visit, live, work, use and enjoy.

What do you think?

- Who should we work with to increase use and activity on the canal and the historic docks system?
- What should we be doing to develop strong destinations at canal terminuses and improve provision and quality of facilities?
- How can we ensure that our canals and docks are central to improving regeneration and place shaping?
- Who should we work with to create new opportunities to live afloat on the network of canals in the North West?

5. We want to ensure our canals continue to provide precious habitat and environmental benefit.

What do you think?

- Which organisations and public sector bodies should we be working closely with to achieve this?
- What should we do to grow and widen the volunteering base to reach communities that currently do not connect, engage, value or use their canals?
- How can we use our canals to help build transferrable skills of local people?

Our Partnership



Professor Steven Broomhead, Retiring Chair. Steve is Chief Executive of Warrington Borough Council and Professor of Entrepreneurial Education at Liverpool Hope University. He previously spent eight years as chief executive at Northwest Regional Development Agency.

Steve Rumbelow, Interim Chair, Steve has been chief executive of Burnley Council for seven years. He was previously director of housing at Manchester City Council. He has significant resource management and change management expertise and has been engaged in regeneration strategies and programmes for the last 20 years.

Trisha Buzzard has been a waterways user for 25 years. She has volunteered at the IWA and is a member of the Executive and other Committees of the Lancaster Canal Trust. Trisha has a background in small business and law and has worked in Local Authorities.

Barry Cole manages the waterbus and canal cruises on the Lancaster Canal. He has previous transport experience with British Rail, where he brought Manchester Airport Station onto the rail network.

Andrew Darron is executive director of Groundwork Lancashire West & Wigan, a charitable trust that helps people and organisations make changes in order to create better neighbourhoods, to build skills and job prospects, and to live and work in a greener way.

Gareth Field is senior development officer at Canoe England in the north and works with canoe clubs, local authorities, community organisations and volunteers across the region.

Ken Hudson, MBE, was elected to Preston City Council in 1978. He was Mayor of Preston in 1993/94 and was Council Leader from 2007 until 2010. Ken was also chair of the City Centre and Guild Committees and is still playing an active role in the regeneration plans for Preston City Centre.

Mike Macklin has recently retired from the position of Vice President of Sourcing at a leading US footwear company. He has vast experience in industry and has held various roles, including Divisional Accountant, Factory Manager, Purchasing Manager and General Manager.

Richard McIlwain is head of programmes at Keep Britain Tidy. The Department manages a number of key environmental initiatives and also looks after the waterway volunteering initiatives RiverCare and BeachCare, which work to reconnect people to their local water environment and encourage them to take action in improving the waterway.

John Roff shared the responsibility of caring for various listed buildings, including Chester Cathedral which attracted nearly one million visitors a year. John was a voluntary sector representative on the Tourism Regeneration Committee of Stockport MBC for six years and is currently a member of the Lancaster Civic Society Advisory Planning committee.

Audrey Smith, OBE, chaired the IWA nationally between 1994-98, was vice chair of WOW partnership from 2001-04, a member of IWAAC between 1997-2006 and was chair of IWA Enterprises from 2000-08, working with volunteers, politicians and public bodies.

Susan Stevens has jointly run the hire company Shire Cruisers since 1980, organising holidays on the northern waterways. Before this, she was involved in voluntary restoration.

Tim Webber is chairman and managing director of the Barnfield Construction Group of companies. In 2010, he won the Lancastrian of the Year Award.

Next steps

Now we want to find out if we've got it right in our first run at our plans for the future.

And, as we do so, we want to develop a platform of common purpose, based on shared benefit and mutual interest, with local communities, local authorities and agencies, local societies and user groups.

We will do these things by:

- Sharing this engagement document with all interested parties and agencies via our website
- Seeking feedback on our plans at our second Annual Public Meeting, on 8 October 2013
- Finalising our ten year Strategic Waterway Plan in December 2013



How to get involved

- What do you think about the broad strategy?
- What would you like to see prioritised in the strategy?
- What do you think about the proposed objectives and actions. Are there others we should be including?
- What plans or policies do you have that we could complement or enhance our canals and rivers?
- How can we work together on community, economic or environmental projects?
- Would your local school, organisation or community like to get more involved in your local waterway's future?

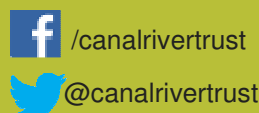
Write to us, by end November 2013:

Email: enquiries.northwest@canalrivertrust.org.uk

Address:

Strategic Waterway Plan Feedback
Canal & River Trust
Waterside House
Waterside Drive
Wigan WN3 5AZ

Check our noticeboard for updates
canalrivertrust.org.uk/north-westboard



Get involved