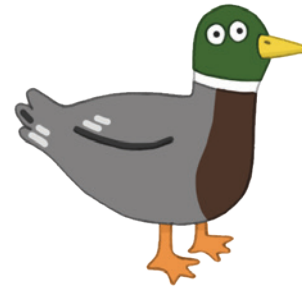


Birmingham's Canals

Activity Pack: Notes for teachers and leaders

This resource focuses on two classroom based challenges designed to teach KS2 children about Birmingham's canals and their 250-year-history of transport and leisure.

- **CHALLENGE 1** focuses on Birmingham's canals and the chocolate trade and encourages pupils to write a poem about chocolate.
- This challenge looks briefly at the issues of health associated with sugar. It also looks at the problem Canal & River Trust have with litter- in particular, non-recyclable wrappers.
- **CHALLENGE 2** invites pupils to make and illustrate postcards after a class visit to their local canal.



KEY MESSAGE

Your local canals in and around Birmingham are great places to visit and relax by water. It is reinforced through two Challenges and supporting activities.



CURRICULUM RELEVANCE:

	English	Geography	D&T	History
Challenge 1	Vocabulary Poetry Discussion	Canals	Design, Make Evaluate Technical Knowledge Healthy and varied diet	Local history
Challenge 2	Letters	Land use	Design, Make Evaluate Technical Knowledge	Local history



Bournville Village

DISCUSSION POINTS ON SLIDES

Slide 1: Delivering ingredients to Cadbury's by canal.

Discussion points could include:

- The type of boats e.g. narrowboats, barges (wide boats) and butty boats (boats without an engine, which are towed by another boat or horse)
- Where boats are delivering to and from (wharves and warehouses)
- How milk is transported (in churns)
- Chocolate crumb transported in sacks and covered with tarpaulins to protect it from the weather.

Slide 2: Key words

These words are intended as triggers to support creative writing. They can be changed or you can add your own words.



Slide 3: Picture postcards

Discussion points could include:

- Whether Bournville looks a nice place to live
- Different ways of sending messages e.g. mobile phones, emails, texts
- Posting using the postal system e.g. stamps, post boxes, postal addresses
- Posting on the internet e.g. texts, Facebook, Tweets
- How canal people once used canalside pubs as 'addresses' and places to exchange news and gossip.

Challenge 1

Timeline

- 1824 John Cadbury opens a grocery shop in Bull St (near Snow Hill Station today) selling tea, cocoa, coffee and drinking chocolate.
- 1831 John opens a warehouse in Crooked Lane near his shop making cocoa and chocolate.
- 1847 The business moves to a factory in Bridge St (near the Symphony Hall today).
- 1854 The Cadbury brothers receive a Royal Warrant as manufacturers of cocoa and chocolate to Queen Victoria.
- 1861 John's sons, Richard and George Cadbury, take over the business.
- 1870s The factory is moved to land about four miles outside Birmingham. They begin to build a 'factory in a garden' for better working and living conditions, later known as Bournville.



Bournville Park



credit Birmingham Museums Trust

Health and well-being

The Cadbury brothers were Quakers who believe that there is good in everybody and that everyone deserves to be treated equally. The health of their workers was very important to them and they rewarded them with higher wages, good houses, schools, hospitals, a park and leisure facilities in Bournville.

Today, Bournville is no longer associated with the Cadbury family and chocolate. But in 2003, it was still voted 'one of the nicest places to live in England'.

Make a chocolate bar: you will need -

Activity 1: Small squares of chocolate, one per child

Activity 2: Melted chocolate; ingredients such as rice krispies, nuts, seeds, fruit e.g. strawberries and dried cherries; small containers lined with grease proof paper

Activity 3: A variety of chocolate wrappers

Activity 4: Recyclable materials to make a wrapper

Activity 5: A variety of art materials.

Slogans and wrappers

Suggestions for discussion points:

- Chocolate was once very expensive and seen as a treat
- Whether chocolate bars are a 'treat' today and if not, what is considered a treat?
- Whether chocolate bars are healthy options and if they should be included in lunch boxes
- The information included on wrappers such as slogans, ingredients, nutrition information, how to store it, whether it is recyclable or not, and weight.

Extension activities:

- Researching the cost of chocolate bars and pricing up pupils' health bars.



Challenge 2

This challenge is best after a class visit to your local canal. It looks at the links between Birmingham's canals, leisure, regular exercise and well-being and tasks them with making, illustrating and sending a picture postcard.

Your class could take a walk to the postbox to post their cards or post them on our Twitter account: Tweet us @crtexplorers, using the #BCpostcard

Additional resources

FREE water safety resources available on our website:

canalrivertrust.org.uk/explorers/water-safety

More details for planning a visit here:

canalrivertrust.org.uk/explorers/planning-your-visit

Additional resources: the BCN Fact File supports the Birmingham's Canals Activity Pack, along with our NEW Schools Plastics Challenge and the Big Green Draw art activities.

Be **SAFE** near water and
Stay **Away From the Edge**