



Canal &
River Trust

Keeping people, nature & history connected

STATE OF THE WATERWAYS' HERITAGE 2012/13

June 2013



Nigel Crowe
Heritage, Technical
T: 07710 175026

Cover photograph – North Warehouse, Sharpness, repaired in 2012/13 and no longer at risk.

INTRODUCTION

The Canal & River Trust was formed in July 2012 but for consistency with previous State of the Waterways Heritage reports, this report treats the year as a whole and does not separate data relating to the Trust from that of its predecessor, British Waterways. It does not however include any data relating to Scotland.

The theme of the annual state of England's historic environment (produced by English Heritage) *Heritage Counts 2012* was 'resilience', which explored how organisations involved with heritage were able to 'adapt, anticipate and respond to changing circumstances'.

Research for *Heritage Counts* found that three factors demonstrated resilience in an organisation. Benchmarked against these factors the Trust has performed well in its first year.

- **Their focus on developing people** – the Trust has improved and increased its relationship and communication with volunteers and supporters and it has people with knowledge and understanding of heritage at board level.
- **Their approach to managing historic assets** – the Trust has continued to make good commercial use of its assets while at the same time balancing the needs of people and heritage conservation. It has a dedicated team of heritage advisers, a well-established, expert heritage advisory committee and it continues to deliver heritage training for its staff.
- **Their strategic vision** – the Trust is increasingly visible and connected and has developed a network of voluntary waterway partnerships and advisory groups. It has a heritage strategy and action plan and is pioneering new approaches to heritage management with its heritage partnership agreements and goal of establishing a national consent system under the terms of the Enterprise & Regulatory Reform Act (2013).

KEY FINDINGS

- 41 heritage consents, 225 clearances.
- >99% compliance recorded for works to heritage assets.
- Listed building and scheduled monument at risk numbers down to 21 with 104 removed for positive reasons from a total of 125 in 2005.
- 25 conservation areas at risk, although many are not 'at risk' due to the presence of a waterway.
- 3 heritage partnership agreements in operation.
- 7 scheduled monument management agreements in operation.
- 14 residential heritage property refurbishment schemes complete or underway.
- Expert Heritage Advisory Committee formed and active for the Trust.
- Heritage volunteer activity up over 70% on 2011/12.

DESIGNATED HERITAGE ASSETS & HISTORIC AREAS

WORLD HERITAGE SITES

- 5 World Heritage Sites benefit the Trust, with positive regeneration effects.
- Pontcysyllte Aqueduct and Canal (Llangollen Canal, mainly in Wales, but part in England).
- Blaenavon Industrial Landscape (Monmouthshire & Brecon Canal).
- City of Bath (Kennet & Avon Canal).
- Liverpool – Maritime Mercantile City (Leeds & Liverpool Canal & Liverpool Docks).
- Saltaire (Leeds & Liverpool Canal).

SCHEDULED MONUMENTS

- Across England and Wales the Trust is responsible for 47 Scheduled Monuments.
- 1.78% of the Trust's total listed and scheduled assets are scheduled monuments.
- Scheduled monuments include earthworks, certain rare types of locks, bridges or aqueducts, wartime structures and a hulked wooden barge.

LISTED BUILDINGS

- The Trust is responsible for the third largest collection of listed buildings in the UK, after the Church of England and the National Trust.
- 2,701 listed buildings in England and Wales (2,705 in 2011/12).
- Listed assets consist of 11 grade I, 50 grade II* and 2,640 grade II listed buildings.
- Listed buildings include a wide range of historic types, ranging from mileposts to locks, bridges, tunnel portals, aqueducts, warehouses, cottages and wartime defence structures.

	Scheduled Monuments		Listed Buildings			Total Number Listed Buildings	
	2011/12	2012/13	Gr I	Gr II*	Gr II	2011/12	2012/13
			2012/13	2012/13	2012/13		
North-West	3	3	2	4	410	417	416
North-East	7	3	2	3	164	169	169
Manchester & Pennine	3	3	1	3	477	481	481
North-Wales & Border (England)	7	7	0	12	281	295	293
North-Wales & Border (Wales)	1	1	1	2	83	87	86
West Midlands	7	7	1	7	242	249	250
Central Shires	0	0	0	0	175	177	175
East Midlands	0	1	0	3	82	85	85
South Wales & Severn (England)	2	2	0	1	117	118	118
South Wales & Severn (Wales)	4	4	0	2	134	135	136
South-East	5	5	0	2	305	307	307
Kennet & Avon	7	7	2	9	129	140	140
London	4	4	2	2	41	45	45
CRT Total	50	47	11	50	2640	2705	2701

Table 1 – Scheduled monuments & listed buildings

CONSERVATION AREAS

- Refinement of data collection in 2012/13 has led to improved understanding of conservation area designations. For the first time, the distribution of conservation areas has been mapped across England and Wales (Fig.1).

Conservation Areas	Linear (waterway) CA	Other CA	Total CA
North-West	1	28	29
North-East	0	21	21
Manchester & Pennine	6	33	39
North-Wales & Border (England)	2	16	18
North-Wales & Border (Wales)	1	4	5
West Midlands	7	18	25
Central Shires	3	23	26
East Midlands	0	25	25
South Wales & Severn (England)	5	15	20
South Wales & Severn (Wales)	0	2	2
South-East	3	27	30
Kennet & Avon	0	25	25
London	8	40	48
CRT Total	36	277	313

Table 2 – Conservation areas

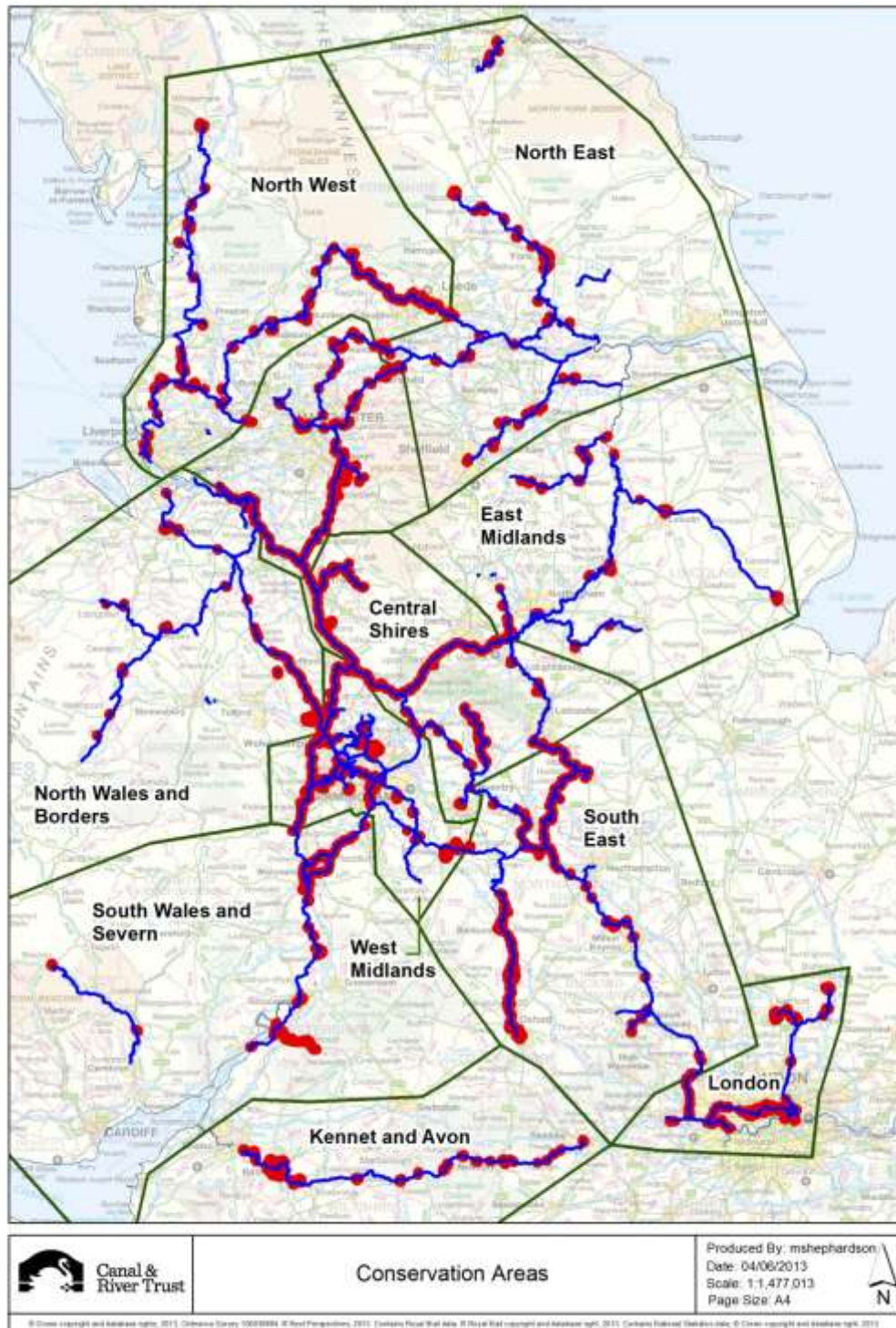


Figure 1. Distribution of Conservation Areas across the Trust's waterways

REGISTERED PARKS & GARDENS

- 63 designations include a waterway or lie within 150 metres of a waterway, with no change from 2011/12.

HISTORIC BATTLEFIELDS

- 9 designations include a waterway or lie within 150 metres of a waterway, with no change from 2011/12.
- Battle of Myton 1319 (Ure Navigation).
- Battle of Boroughbridge 1322 (Ure Navigation).
- Battle of Tewkesbury (River Severn).
- Battle of Bosworth Field 1485 (Ashby Canal).
- Battle of Stoke Field (River Trent).
- Battle of Powick Bridge 1642 with Worcester 1651 (River Severn).
- Battle of Newbury I 1643 (Kennet & Avon).
- Battle of Nantwich 1644 (Shropshire Union Canal).
- Battle of Cropredy Bridge 1644 (Oxford Canal).

NATIONAL PARKS

- 3 National Parks include short lengths of Trust waterways (42.5km) or reservoirs.
- Yorkshire Dales (Winterburn Reservoir & feeder, Leeds & Liverpool Canal).
- Brecon Beacons, Wales (Monmouthshire & Brecon Canal).
- Peak District (Swellands, Black Moss, Redbrook, Brunclough, Diggle reservoirs & feeders, Huddersfield Narrow Canal).

AREAS OF OUTSTANDING NATURAL BEAUTY

- 5 waterways pass through AONBS, totalling some 90.8km.
- North Wessex Downs (Kennet & Avon Canal, 65.8km).
- Cannock Chase (Short lengths of Staffordshire & Worcestershire Canal & Trent & Mersey Canal).
- Cotswolds (Kennet & Avon Canal).
- Chilterns (Grand Union Canal).
- Clwydian Hills (Llangollen Canal, Wales).

	Historic Park & Gdns	Historic Battlefields	WHS	National Parks	Km of Waterways in National Parks	Km of Waterways in conservation Areas	Km of Waterways in AONB
North-West	7	0	2	0	1	55	0
North-East	5	2	0	1	0	18	0
Manchester & Pennine	2	0	0	1	1	120	0
North-Wales & Border (England)	2	1	0.5	0	0	47	0
North-Wales & Border (Wales)	7	0	0.5	0	0	2	14
West Midlands	0	0	0	0	0	109	6
Central Shires	6	1	0	0	0	185	3
East Midlands	4	1	0	0	0	21	0
South Wales & Severn (England)	0	2	0	0	0	53	0
South Wales & Severn (Wales)	1	0	1	1	53	1	0
South-East	5	1	0	0	0	151	12
Kennet & Avon	2	1	1	0	0	21	66
London	11	0	0	0	0	53	0
CRT Total	52	9	5	3	55	836	101

Table 3 – Other heritage designations

COMPARATIVE DESIGNATIONS

- 111 km which is 5.55% of the Trust waterways is in Wales and Wales has 222 listed buildings which is 8.95% of the Trust's total stock of listed buildings.

	England	Wales
Listed Buildings	2479	222
Scheduled Monuments	44	5
Conservation Areas	306	7
Historic Park & Gardens	44	8
Historic Battlefields	9	0
World Heritage Sites	3.5	1.5
National Parks	2	1

Table 4 – Comparative heritage designations for England and Wales

ASSET CONDITION

PRINCIPAL ASSETS

- All the Trust's Principal (and some Non-Principal Assets) are graded in the range A to E with A representing an asset in prime condition and E representing a seriously deteriorated asset.
- In 2012/13 of 2,088 designated Principal Assets, 1,749 were graded A-C (1,715 in 2011/12).
- 339 were graded D-E (358 in 2011/12) including 5 grade II* and grade I listed buildings.

NATIONAL STEWARDSHIP SCORE – WORKS TO HERITAGE ASSETS

- NSS for works to heritage assets (using Deloitte formula) of Good or Adequate heritage quality > 94% in 2012/13.
- 111 Good quality works, 26 Adequate quality works, 7 Unsatisfactory quality works.

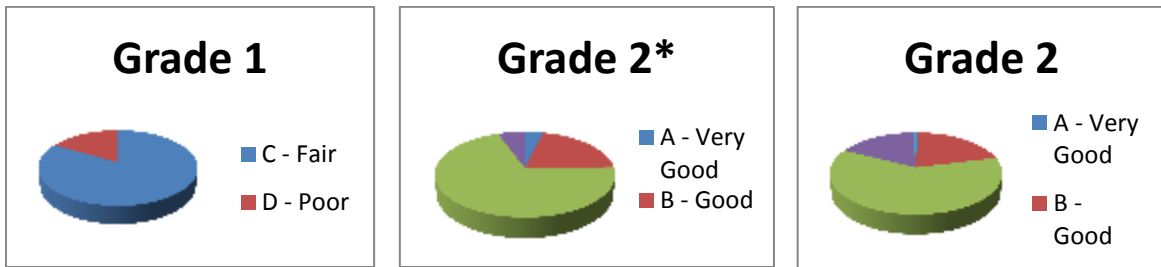
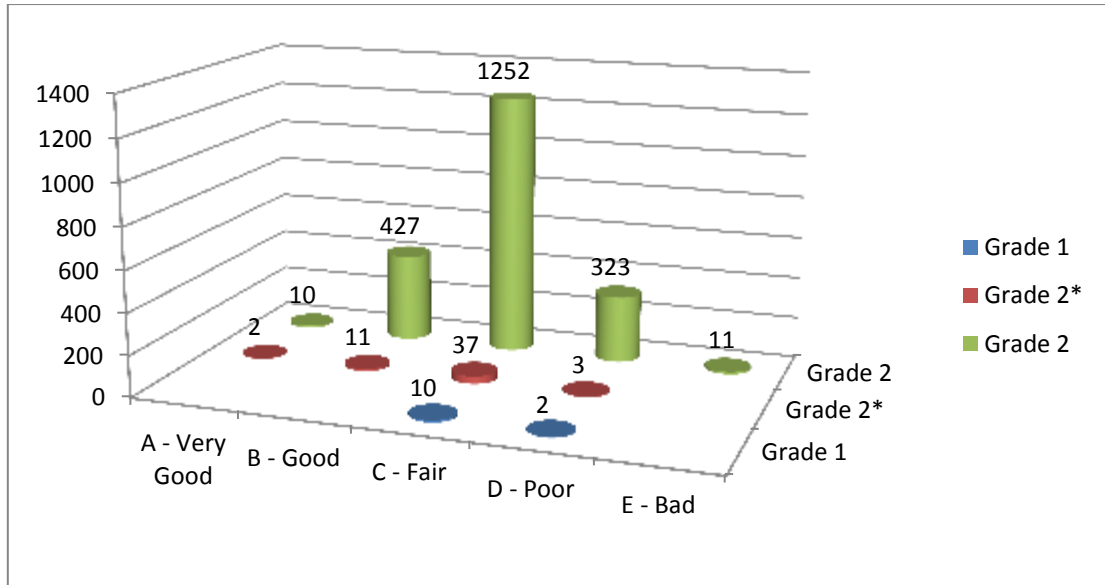


Figure 2. Condition of listed Principal Assets



Figure 3. North Warehouse, Sharpness was repaired in 2012/13 and is no longer a Building at Risk.

HERITAGE AT RISK

A complete list of heritage assets (scheduled monuments, listed buildings and conservation areas) at risk is appended to this report.

LISTED BUILDINGS AT RISK

- 19 listed buildings at risk in 2012/13.
- 16 engineering structures, 3 buildings (2 former pumping stations and a transshipment warehouse).
- 2 at risk assets in Wales, the remainder in England.
- 1 grade II* listed building, 18 grade II listed buildings.
- North Warehouse, Sharpness Docks, a very intractable asset at risk, repaired at a cost of £600,000 (Fig 3).

SCHEDULED MONUMENTS AT RISK

- 2 scheduled monuments at risk, 1 added in year (Engine Arm Aqueduct).
- 1 scheduled monument, Guillotine Lock, King's Norton repaired with People's Postcode Lottery and English Heritage grants and has English Heritage agreement to be removed from at risk Register in August 2013.

CONSERVATION AREAS AT RISK

- 25 conservation areas at risk (up from 13 in 2011/12).
- This includes both linear (waterway boundary based) and settlement (town or village based) conservation areas.
- Inclusion on at risk registers does not necessarily imply neglect by the Trust; conservation areas are affected by many different kinds of development, buildings and features.

HERITAGE CRIME & INCIDENTS

- Quarterly reporting of heritage-related crime showed an increase of almost 8% on 2011/12 although this may be due to greater vigilance and reporting of criminal activity than in years gone by.
- Most criminal incidents recorded were vandalism, graffiti and theft.
- The highest number of incidents (58) was reported in the North East. Non-crime incidents leading to damage to heritage assets consisted mainly of vehicle impacts damaging bridge parapets and boat impacts to bridge abutments and locks (Fig.3).

	No. of Heritage-related crimes
North-West	43
North-East	58
Manchester & Pennine	25
North-Wales & Border (England)	10
North-Wales & Border (Wales)	4
West Midlands	50
Central Shires	24
East Midlands	27
South Wales & Severn (England)	14
South Wales & Severn (Wales)	3
South-East	18
Kennet & Avon	19
London	56
CRT Total	351

Table 5 – Heritage –related crimes on Trust property in 2012/13

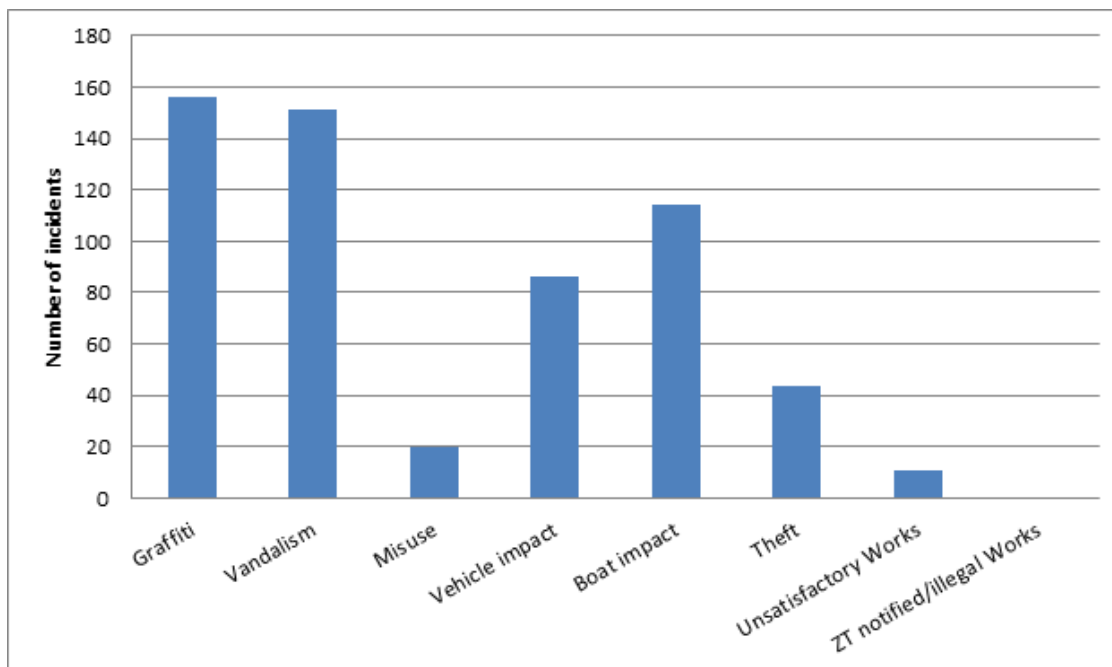


Figure 4. Heritage-related incidents of all types recorded in 2012/13

Graffiti	Painted words, letters or symbols applied without CRT permission to heritage assets
Vandalism	Damage caused to heritage assets through malicious or reckless behaviour
Misuse	Damage or incidents caused by inappropriate use of heritage asset
Vehicle Impact	Impact damage to heritage assets caused by road going vehicles or farm machinery
Boat Impact	Impact damage to heritage assets caused by boats (excluding general wear & tear)
Theft	The illegal removal of heritage assets or constituent parts
Unsatisfactory works	Work carried out to an unacceptable standard either in work quality or a failure to follow the correct process leading to loss or damage of a heritage asset; incidents include potentially unauthorised works reported to the local authority, EH or CADW, but subsequently cleared with no enforcement or declaration of illegality
ZT notified/Illegal works	Unauthorised works to a designated asset notified by the local authority, English Heritage or Cadw.

Table 6 – definitions relating to Figure 4.

HERITAGE ASSESSMENTS & CONSENTS

ENVIRONMENTAL APPRAISALS

- In 2012/13 The Trust's heritage advisers validated 1,515 internal environmental appraisals for works of all kinds to heritage assets and the historic environment of the waterways (down from 1,581 in 2011/12).
- The greatest number of these, 235, was in the North East.
- 55 environmental appraisals were for works in Wales.

	Environmental Appraisals Validated
North-West	124
North-East	235
Manchester & Pennine	87
North-Wales & Border (England)	72
North Wales & Border (Wales)	30
West Midlands	183
Central Shires	161
East Midlands	158
South Wales & Severn (England)	71
South Wales & Severn (Wales)	25
South-East	158
Kennet & Avon	91
London	120
CRT Total	1,515

Table 7 – Validated environmental appraisals

LISTED BUILDING CONSENTS

- 40 listed building consents given (76 in 2011/12 for England & Wales).
- 206 clearances to proceed with works without consent given (156 in 2011/12 for England & Wales).
- No listed building consents refused by heritage authorities.

SCHEDULED MONUMENT CONSENTS

- 1 scheduled monument consent given (11 in 2011/12 for England & Wales).
- 19 clearances to proceed with works without consent given.

CONSERVATION AREA CONSENTS

- No conservation area consents recorded in 2012/13 - no change from 2011/12.

NATIONAL STEWARDSHIP SCORE – LEGAL COMPLIANCE

- NSS for legal compliance with heritage consents and clearances >99%.

	Consents Granted			Clearance Granted			Non compliances	Total # Jobs	Local Authority enforcement /ZT
	SMC	LBC	Total	SAM	LB	Total			
North-West	0	8	8	0	19	19	0	27	0
North-East	1	2	3	0	10	10	0	13	0
Manchester & Pennine	0	5	5	0	23	23	1	28	0
North-Wales & Border (England)	0	1	1	1	22	23	0	24	0
North Wales & Border (Wales)	0	1	1	11	9	20	0	21	0
West Midlands	0	3	3	3	34	37	0	40	0
Central Shires	0	10	10	0	19	19	0	29	0
East Midlands	0	3	3	0	25	25	1	28	0
South Wales & Severn (England)	0	0	0	0	4	4	0	4	0
South Wales & Severn (Wales)	0	0	0	0	9	9	0	9	0
South-East	0	4	4	0	15	15	0	19	0
Kennet & Avon	0	1	1	1	15	16	0	17	0
London	0	2	2	3	2	5	0	7	0
CRT Total	1	40	41	19	206	225	2	268	0

Table 8 – Heritage consents & clearances

MANAGEMENT AGREEMENTS

HERITAGE PARTNERSHIP AGREEMENTS (HPA)

- 3 heritage partnership agreements operating, amounting to 4.27% of the Trust's 2,000 miles of waterways.
- Foxton Locks and Inclined Plane (Grand Union Canal, Leicester Line).
- Pocklington Canal.
- Greater Manchester Canals (a collaboration with Greater Manchester local authorities).

SCHEDULED MONUMENT MANAGEMENT AGREEMENTS (SMMA)

- 7 Scheduled monument management agreements operating.
- *Harriett* (a Kennet barge that lies within the Purton Hulks assemblage).
- Glasson Dock (Lancaster Canal).
- Hincaster Horse Path (Lancaster Canal).
- Sedgwick Aqueduct (Lancaster Canal).
- March Barn Bridge (Rochdale Canal).
- Marple Aqueduct (Peak Forest Canal).
- Hanwell Flight of Locks (Grand Union Canal).

HERITAGE PROPERTY

- Continued progress with the Trust's residential heritage refurbishment programme.
- Principal aims:
 - To rectify inappropriate and unauthorised works.
 - To reduce maintenance costs by improving to a sustainable and usable condition.
 - To attract/retain good quality tenants and derive high rental income.
- Original 4 year programme being extended to refurbish 38 residential properties chosen to retain for their high heritage value.
- £250,000 expenditure per annum means refurbishing between 2 and 6 properties per year, depending on condition and final specification.
- 9 properties refurbished to date; 5 currently underway.
- c £690,000 spent over last 3 years.
- Average expenditure £60,000 per property.
- Improved rental income from restored properties.
- Positive relationships with statutory authorities who can see the benefits to designated heritage assets.
- Positive feedback from tenants where energy saving is being noticed, and levels of internal dampness have noticeably decreased.
- Positive feedback from the public and stakeholders.

HERITAGE TRAINING

- 80 'heritage champions' (waterway based operations staff with NVQ3 Heritage Skills) progressed by March 2013 (achieving the target set in April 2011).
- 6 practical, site-based training events predominantly concentrating on use of lime-based mortars and repointing of historic brickwork and stonework.
- Training events carried out with Trust staff, volunteers and students from University of Central Lancashire (UCLAN).
- Heritage enrichment event delivered to 18 of the Trust's NVQ3 apprentices.



Figures 5 & 6 – Apprentices' heritage enrichment day at Bedale College

	Practical Training Events	Awareness Training Events	Number of Heritage Champions
North-West	2	2	19
North-East	0	0	11
Manchester & Pennine	2	2	8
North-Wales & Border (Wales)	0	0	0
North Wales & Border (England)	0	3	6
West Midlands	0	0	8
Central Shires	0	0	10
East Midlands	0	0	6
South Wales & Severn (Wales)	0	1	0
South Wales & Severn (England)	1	1	0
South-East	0	2	10
Kennet & Avon	1	1	0
London	0	1	2
Contractors	0	6	0
CRT Total	6	19	80

Table 9 – Number of training events & Heritage Champions trained in 2012/13

VOLUNTEERS

- Significant uplift (76% up on 2011/12) in engagement with volunteers working on heritage assets, supporting heritage events or office-based heritage work.
- Volunteers include the Trust's heritage advisory committee of heritage experts who have met 5 times and advise on policy, strategy and complex heritage-related issues.
- Volunteer projects included, amongst others: making an inventory of historic blacksmith's tools; a memories day (connecting people and history), vegetation removal from a number of structures, restoration of lime kilns and research work linked to historic canal plans and a conservation management plan for Stanley ferry Aqueduct.



***Figures 7 & 8 – restoration of Watton lime kilns, Monmouthshire & Brecon Canal.
Figures 9 & 10 –Memories day and working blacksmith, Ellesmere Yard, Llangollen Canal***

	Events			Volunteer Hours			2011/12	2012/13	% Change
	Heritage Open Days	Stoppage/ Other Events	# Visitors Attending	Unskilled	Skilled	Professional	Total Hours 2011/12	Total Hours 2012/13	
North-West	0	1	2,200	0	0	195	150	195	30
North-East	1	1	1600	0	181	0	795	181	-77
Manchester & Pennine	0	2	920	35	66	0	75	101	35
North-Wales & Border (England)	0	2	188	121	0	0	35	121	246
North-Wales & Border (Wales)	0	2	215	30	0	61	15	91	507
West Midlands	1	0	250	0	80	100	543	180	-67
Central Shires	0	2	170	88	0	0	42	88	110
East Midlands	0	1	250	0	88	120	76	208	174
South Wales & Severn (England)	0	0	0	598	0	20	88	618	602
South Wales & Severn (Wales)	0	0	0	282	0	15	30	297	890
South-East	0	3	3250	0	0	0	242	0	-100
Kennet & Avon	0	1	60	1876	0	58	348	1934	456
London	1	1	350	799	282	0	374	1081	189
Total Hours	3	16	9453	3829	697	569	2890	5095	76%

Table 10 – Voluntary heritage-related activity in 2012/13

APPENDIX - HERITAGE AT RISK**LISTED BUILDINGS AND SCHEDULED MONUMENTS AT RISK**

No	Waterway Unit	Name of Asset	Canal	Notes
1	Central Shires	Hawkesbury Pumping House	Coventry	Grade II listed. Disused and empty with no clear future at present.
2		Tame Aqueduct with attached pillbox	Coventry	Grade II listed. Asset condition grade B. Attached brick shed sited below aqueduct needs attention.
3	Kennet & Avon	Semington Aqueduct	Kennet & Avon	Grade II listed. Asset condition grade D. A management plan is in operation.
4	London	Hanwell Flight of Locks and brick boundary wall of St Bernard's Hospital W7	Grand Union	Scheduled monument on English Heritage register. A scheduled monument management agreement is in operation and works to the disused side-ponds are undertaken by volunteers.
5	Manchester & Pennine	Wharf Shed, Canal Basin, Whaley Bridge	Peak Forest	Grade II* listed & on English Heritage register. Asset condition grade B. Recent repairs to roof.
6	North Wales & Borders	Frodsham Lock, Frodsham Cut	Weaver Navigation	Disused lock, not inspected. Unlikely to be brought back into use.
7		Greaves Bridge (No. 52)	Llangollen	Grade II listed. Major Works planned for 2013/14. Asset condition grade D.
8		Roundthorn Bridge (No.44)	Llangollen	Grade II listed. Works have been specified. Asset condition grade D.
9		Stanks Bridge (No.60)	Llangollen	Grade II listed. Works have been specified. Could potentially be repaired with volunteer help.
10		Pryce's Bridge (No.68)	Llangollen	Grade II listed. Works have been specified. Could potentially be repaired with volunteer help.

11		Bridge 46, Llangollen Feeder	Llangollen	Grade II listed. In Wales. Asset condition grade B. Lies in World Heritage Site area.
12		Aberbechan Aqueduct	Montgomery	Grade II listed. In Wales. Asset condition grade E. Now in Major Works plan.
13	North West	Lock No.91 (Paired with Eastern and Western lock chambers) – bypass channel, Appley Locks	Leeds & Liverpool	Grade II listed. Disused and in poor condition.
14		Dobson's Locks	Leeds & Liverpool	Grade II listed. Works were undertaken in 2012/13 so this asset should be removed from the local authority register.
15		Morton Aqueduct	Leeds & Liverpool	Grade II listed. Vegetation and parapet repairs are being costed.
16		Aqueduct over Hainsworth Road & Silsden Beck	Leeds & Liverpool	Grade II listed. Vegetation and parapet repairs are being costed.
17	South East	Pumping Station, Soulbury	Grand Union	Grade II listed. Asset condition D. Major Works planned for 2013/14.
18		Lady Capel's Bridge (No.163)	Grand Union	Grade II listed. Needs brick repairs and paint removal. Works planned for 2013/14.
19	South Wales & Severn	Saul Junction Lock	Gloucester & Sharpness	Grade II listed. Disused but very visible and in poor condition.
20	West Midlands	James Bridge Aqueduct	Walsall	Grade II listed. Asset condition grade D. Repairs being negotiated with Walsall MBC as part of road improvements.
21		Engine Arm Aqueduct	Birmingham Canal Main Line	Scheduled monument – English Heritage Register.

CONSERVATION AREAS AT RISK

No	Waterway Unit	Name of Asset	Canal	Notes
1	Central Shires	Trent & Mersey Canal	Trent & Mersey	English Heritage Register (only relates to Stoke on Trent): Condition - Very bad Vulnerability - Medium Trend - Improving
2		Caldon Canal	Caldon	English Heritage & Stoke-on-Trent City Council registers. Condition - Very bad Vulnerability - Medium Trend - Improving
3		Stone	Trent & Mersey	English Heritage & Stafford Borough Council registers. Condition - Poor Vulnerability - Low Trend - Deteriorating
4	London	Copper Mill Lock	Grand Union	London Borough of Hillingdon Register.
5		Uxbridge Lock	Grand Union	London Borough of Hillingdon Register.
6		St Mark's Church & Canal, Hanwell	Grand Union	English Heritage Register. Condition – Poor Vulnerability – Low Trend – Deteriorating

7	North East	Todmorden	Rochdale	Calderdale Council Register.
8		Elland	Leeds & Liverpool	Calderdale Council Register.
9	North Wales & Borders	Llanymynech	Montgomery	English Heritage Register. Condition - Very bad Vulnerability – Low Trend - Deteriorating significantly
10		Northwich Town Centre	Weaver Navigation	English Heritage Register. Condition - Very bad Vulnerability – Medium Trend - Improving
11	North West	Canalside, Burnley	Leeds & Liverpool	English Heritage Register. Condition – Very Bad Vulnerability – Medium Trend – Improving.
12		Burnley Town Centre	Leeds & Liverpool	English Heritage Register Vulnerability – Medium Condition - Very Bad Trend - Deteriorating
13		Holbeck	Leeds & Liverpool	English Heritage Register Vulnerability – Medium Condition - Very Bad Trend - No Significant Change

14		Leigh Bridge	Leeds & Liverpool	English Heritage Register Vulnerability – High Condition – Poor Trend - No significant change
15		Whitefield		English Heritage Register Vulnerability – Medium Condition - Very Bad Trend - Improving Significantly
16		Castle Street, Liverpool	Leeds & Liverpool	English Heritage Register Vulnerability – Low Condition – Poor Trend - Deteriorating significantly
17		Duke Street, Liverpool	Leeds & Liverpool	English Heritage Register Vulnerability – Medium Condition – Poor Trend - Deteriorating
18		Scarisbrick Park	Leeds & Liverpool	English Heritage Register Vulnerability - General satisfactory but with localised problems Condition – Medium Trend – Declining
19	South East	Grand Union Canal, Daventry	Grand Union	Daventry District Council Register.

20	South Wales & Severn	The Canal, Worcester	Worcester & Birmingham	English Heritage & Worcester City Council registers. Condition - Very bad Vulnerability - Low Trend - No significant change
21	West Midlands	Warwick Bar	Grand Union	English Heritage & Birmingham City Council Register. Condition – Poor Vulnerability – Low Trend – Improving
22		Stourbridge Branch Canal	Stourbridge Town Arm	English Heritage & Dudley Metropolitan Borough Council registers. Condition – At risk Vulnerability – Unknown Trend – Improving Significantly
23		Lower Shuckburgh	Grand Union	Stratford Upon Avon District Council Register. General deterioration of built environment not due to canal.
24		Fazeley and Bonehill	Coventry/Birmingham & Fazeley.	English Heritage & Lichfield District Council Register. Condition – Very bad Vulnerability – Low Trend – Improving
25		Gilgal	Staffordshire & Worcestershire	English Heritage register Condition – Very Bad Vulnerability – Medium Trend - Deteriorating