

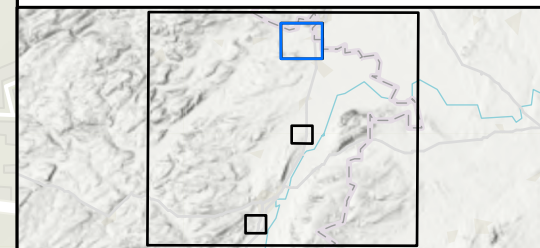
**Legend**

Pond locations

Presence/Absence

- Absent
- N/A
- Present
- Works Locations

**Notes**  
 Service Layer Credits: Contains OS data © Crown Copyright and database right 2023  
 Contains data from OS Zoomstack, Contains OS data © Crown Copyright and database right 2019



Rev	Date	Description	Drawn	Check	Approv
01	18/07/22	INITIAL ISSUE	KF	BM	MG

Client:

**PROJECT:**  
MONTGOMERY CANAL

Site:  Montgomery Canal

Client:  National Highways

Registered office:  
80Fen  
80 Fenchurch Street  
London  
EC3M 4BY

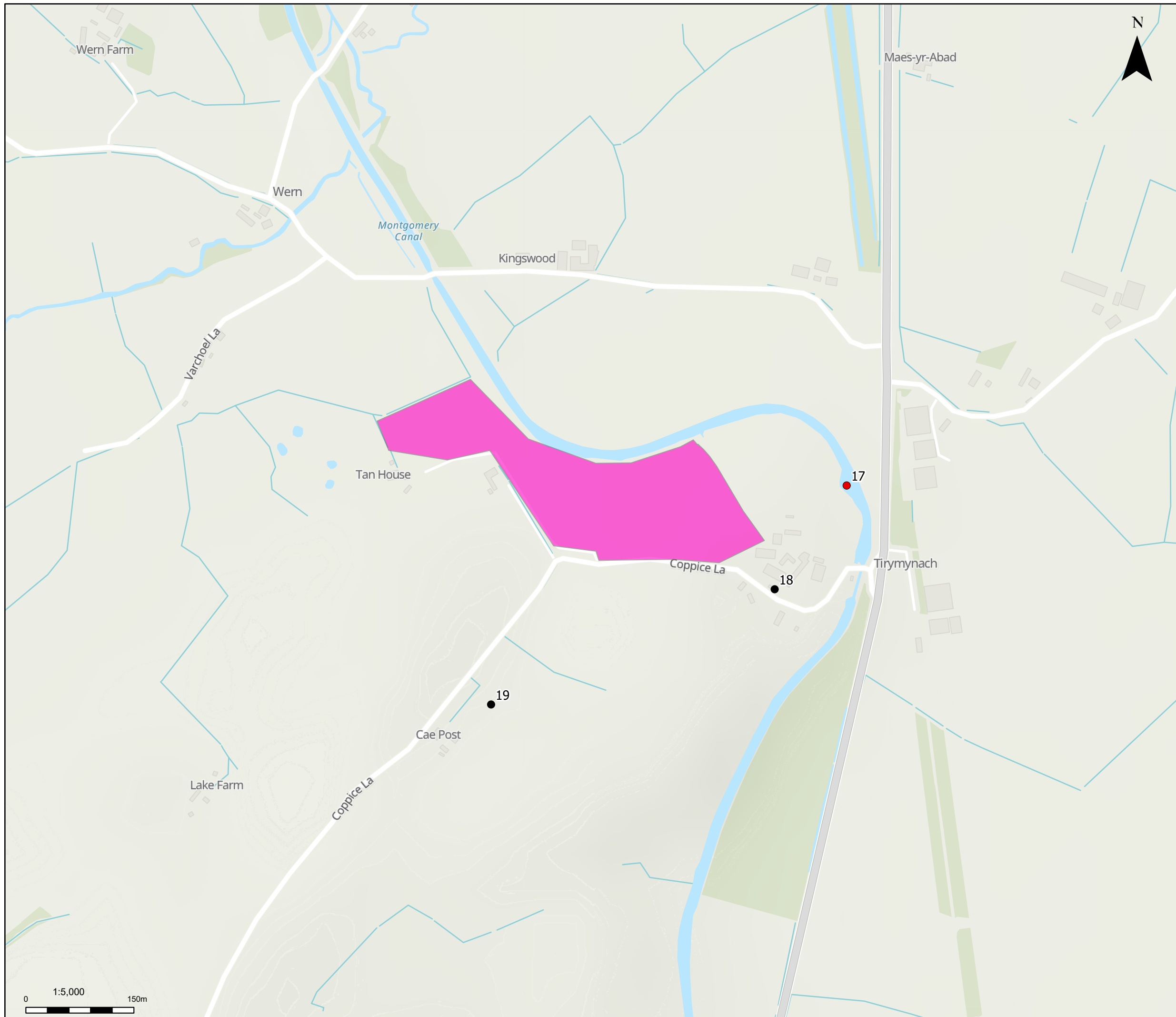
Coordinating Office:  
80Fen  
80 Fenchurch Street  
London  
EC3M 4BY

[www.arcadis.com](http://www.arcadis.com)

Title:

**Figure 2 -  
Results of assessment  
of GCN presence 2022  
Page 2**

Designed	B. Murray	Date	14 JUL 22	Signed	
Drawn	K. Fischer	Date	14 JUL 22	Signed	
Checked	B. Murray	Date	14 JUL 22	Signed	
Approved	M. Girvan	Date	14 JUL 22	Signed	
Scale:	1:10,000	Datum:	AOD		
Original Size:	A3	Grid:	OS		
Suitability Code:	S2	Project Number:	10048826		
Suitability Description:					
For Information					
Drawing Number:					Revision:
10048826-ARC-EBD-ZZ-DR-ZZ-0002					P01



**Legend**

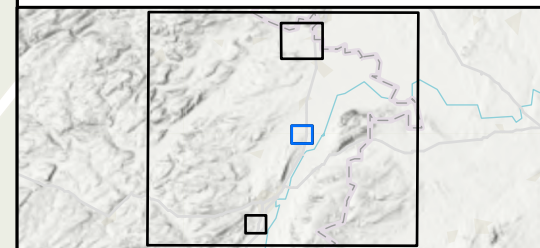
Pond locations

Presence/Absence

- Absent
- N/A
- Present

Works Locations

**Notes**  
 Service Layer Credits: Contains OS data © Crown Copyright and database right 2023  
 Contains data from OS Zoomstack, Contains OS data © Crown Copyright and database right 2019



Rev	Date	Description	Drawn	Check	Approv
01	18/07/22	INITIAL ISSUE	KF	BM	MG

Client:

**PROJECT:**  
MONTGOMERY CANAL

**Site**

---

Montgomery Canal

**Client**

---

National Highways

Registered office:  
80Fen  
80 Fenchurch Street  
London  
EC3M 4BY

Coordinating Office:  
80Fen  
80 Fenchurch Street  
London  
EC3M 4BY

[www.arcadis.com](http://www.arcadis.com)

**Title:**

Figure 2 -  
Results of assessment  
of GCN presence 2022  
Page 3

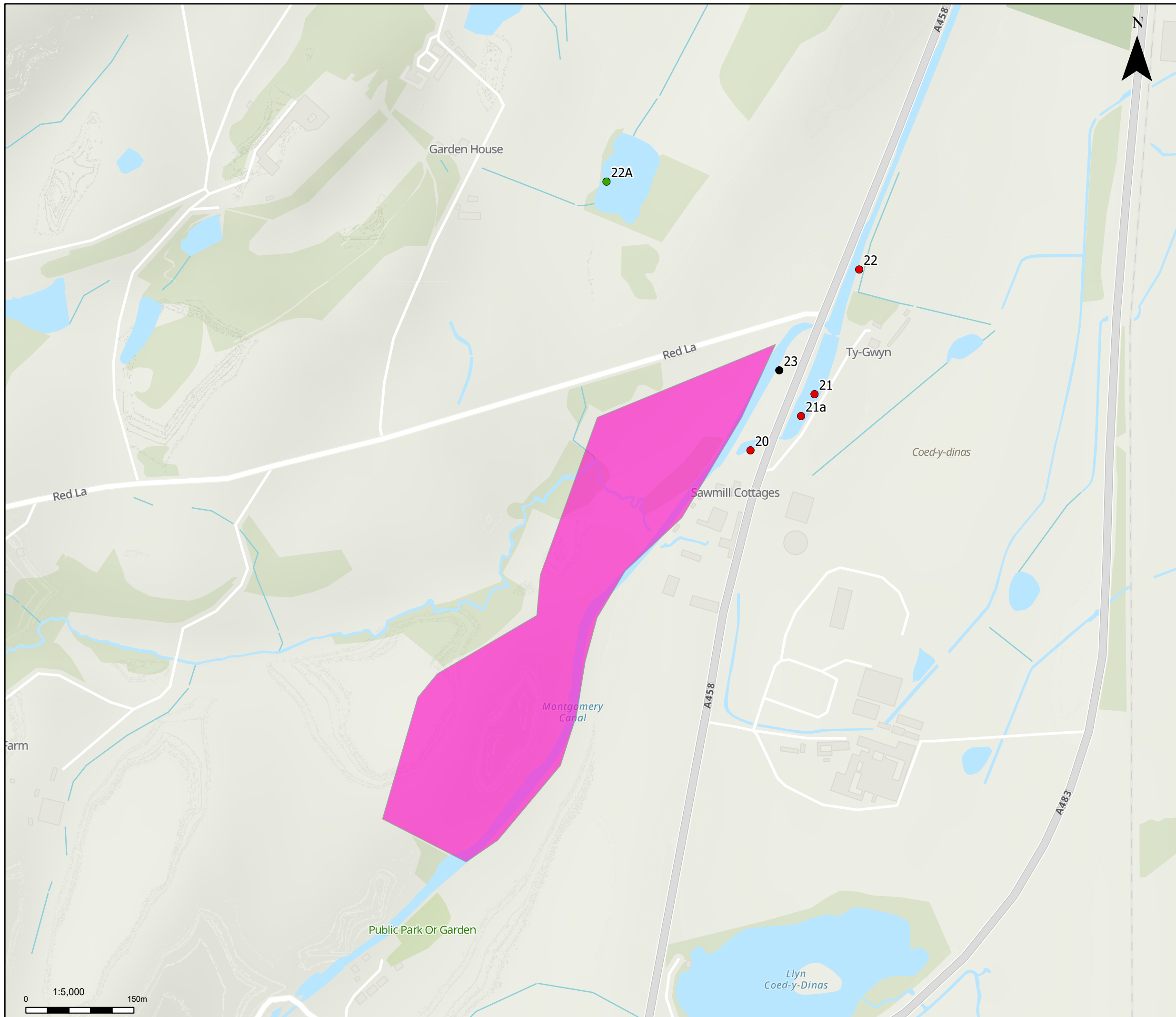
Designed	B. Murray	Date: 14 JUL 22	Signed
Drawn	K. Fischer	Date: 14 JUL 22	Signed
Checked	B. Murray	Date: 14 JUL 22	Signed
Approved	M. Girvan	Date: 14 JUL 22	Signed
Scale:	1:5,000	Datum:	AOD
Original Size:	A3	Grid:	OS
Suitability Code:	S2	Project Number:	10048826

Suitability Description:

For Information

Drawing Number:	10048826-ARC-EBD-ZZ-DR-ZZ-0002	Revision:	P01
-----------------	--------------------------------	-----------	-----





**Legend**

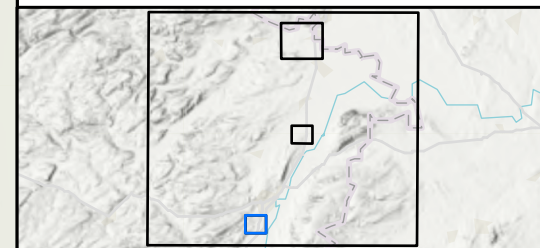
Pond locations

Presence/Absence

- Absent
- N/A
- Present

Works Locations

**Notes**  
 Service Layer Credits: Contains OS data © Crown Copyright and database right 2023  
 Contains data from OS Zoomstack, Contains OS data © Crown Copyright and database right 2019



Rev	Date	Description	Drawn	Check	Approv
01	18/07/22	INITIAL ISSUE	KF	BM	MG

Client:

**PROJECT:**  
**MONTGOMERY CANAL**

**Site**

Montgomery Canal

**Client**

National Highways

Registered office:  
80Fen  
80 Fenchurch Street  
London  
EC3M 4BY

Coordinating Office:  
80Fen  
80 Fenchurch Street  
London  
EC3M 4BY

www.arcadis.com

**Title:**

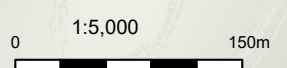
**Figure 2 -  
Results of assessment  
of GCN presence 2022  
Page 4**

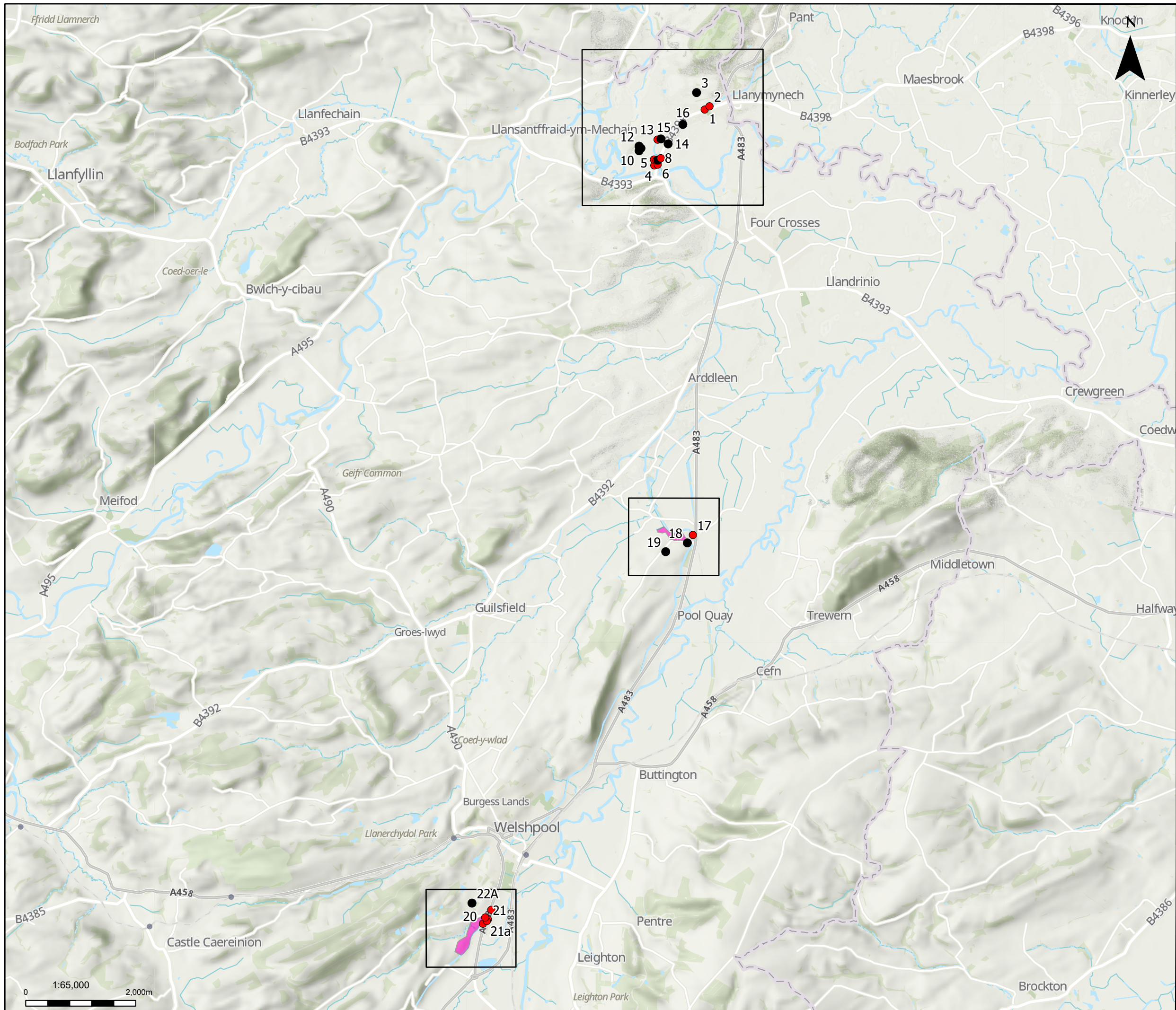
Designed	B. Murray	Date: 14 JUL 22	Signed
Drawn	K. Fischer	Date: 14 JUL 22	Signed
Checked	B. Murray	Date: 14 JUL 22	Signed
Approved	M. Girvan	Date: 14 JUL 22	Signed
Scale:	1:5,000	Datum:	AOD
Original Size:	A3	Grid:	OS
Suitability Code:	S2	Project Number:	10048826

Suitability Description:

**For Information**

Drawing Number:	10048826-ARC-EBD-ZZ-DR-ZZ-0002	Revision:	<b>P01</b>
-----------------	--------------------------------	-----------	------------





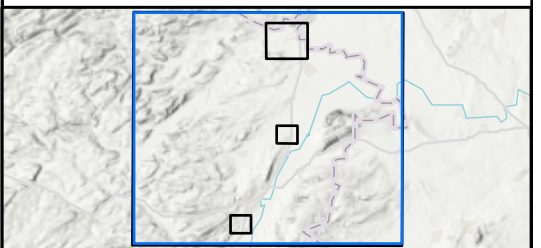
**Legend**

Pond locations

eDNA Result 2023


- N/A
- Negative
- Works Locations

**Notes**  
 Service Layer Credits: Contains OS data © Crown Copyright and database right 2023  
 Contains data from OS Zoomstack, Contains OS data © Crown Copyright and database right 2019



Rev	Date	Description	Drawn	Check	Approv
01	17/08/23	INITIAL ISSUE	MS	BM	MG

Client:



**PROJECT: MONTGOMERY CANAL**

Site: Montgomery Canal      Client: National Highways



Registered office:  
80Fen  
80 Fenchurch Street  
London  
EC3M 4BY

Coordinating Office:  
80Fen  
80 Fenchurch Street  
London  
EC3M 4BY

www.arcadis.com

Title:

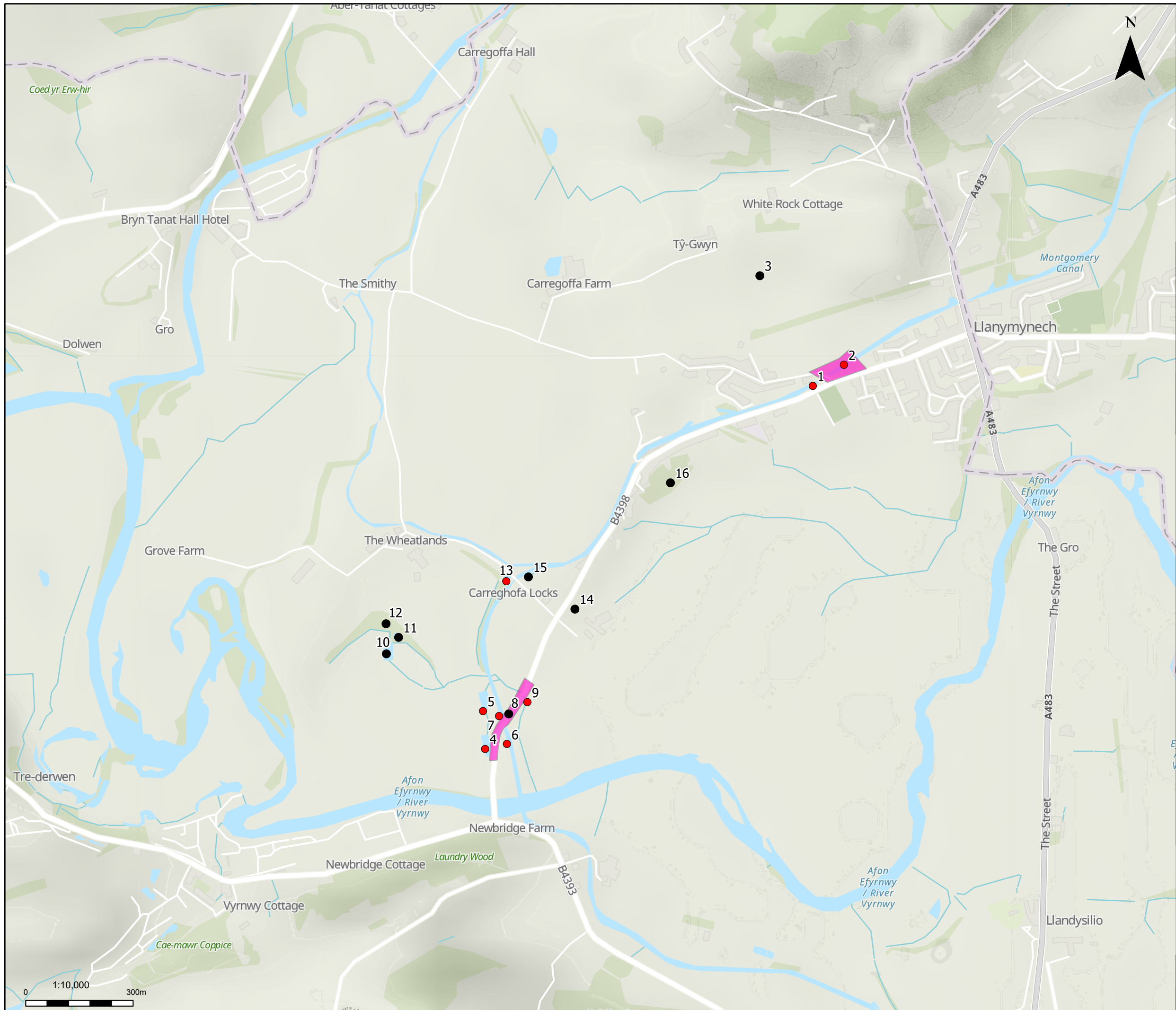
**Figure 3 -  
Results of assessment  
of GCN presence 2023  
Page 1**

Designed	B. Murray	Date: 17 AUG 23	Signed
Drawn	M. Shetye	Date: 17 AUG 23	Signed
Checked	B. Murray	Date: 17 AUG 23	Signed
Approved	M. Girvan	Date: 17 AUG 23	Signed
Scale:	1:65,000	Datum:	AOD
Original Size:	A3	Grid:	OS
Suitability Code:	S2	Project Number:	10048826

Suitability Description:

**For Information**

Drawing Number: 10048826-ARC-EBD-ZZ-DR-ZZ-0004      Revision: P01



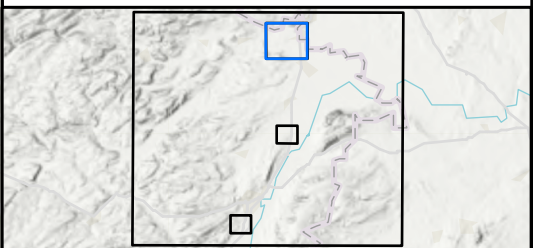
**Legend**

Pond locations

eDNA Result 2023


- N/A
- Negative
- Works Locations

**Notes**  
 Service Layer Credits: Contains OS data © Crown Copyright and database right 2023  
 Contains data from OS Zoomstack, Contains OS data © Crown Copyright and database right 2019



Rev	Date	Description	Drawn	Check	Approv
01	17/08/23	INITIAL ISSUE	MS	BM	MG

Client:



**PROJECT: MONTGOMERY CANAL**

Site: Montgomery Canal  
 Client: National Highways



Registered office:  
 80Fen  
 80 Fenchurch Street  
 London  
 EC3M 4BY

Coordinating Office:  
 80Fen  
 80 Fenchurch Street  
 London  
 EC3M 4BY

www.arcadis.com

Title:

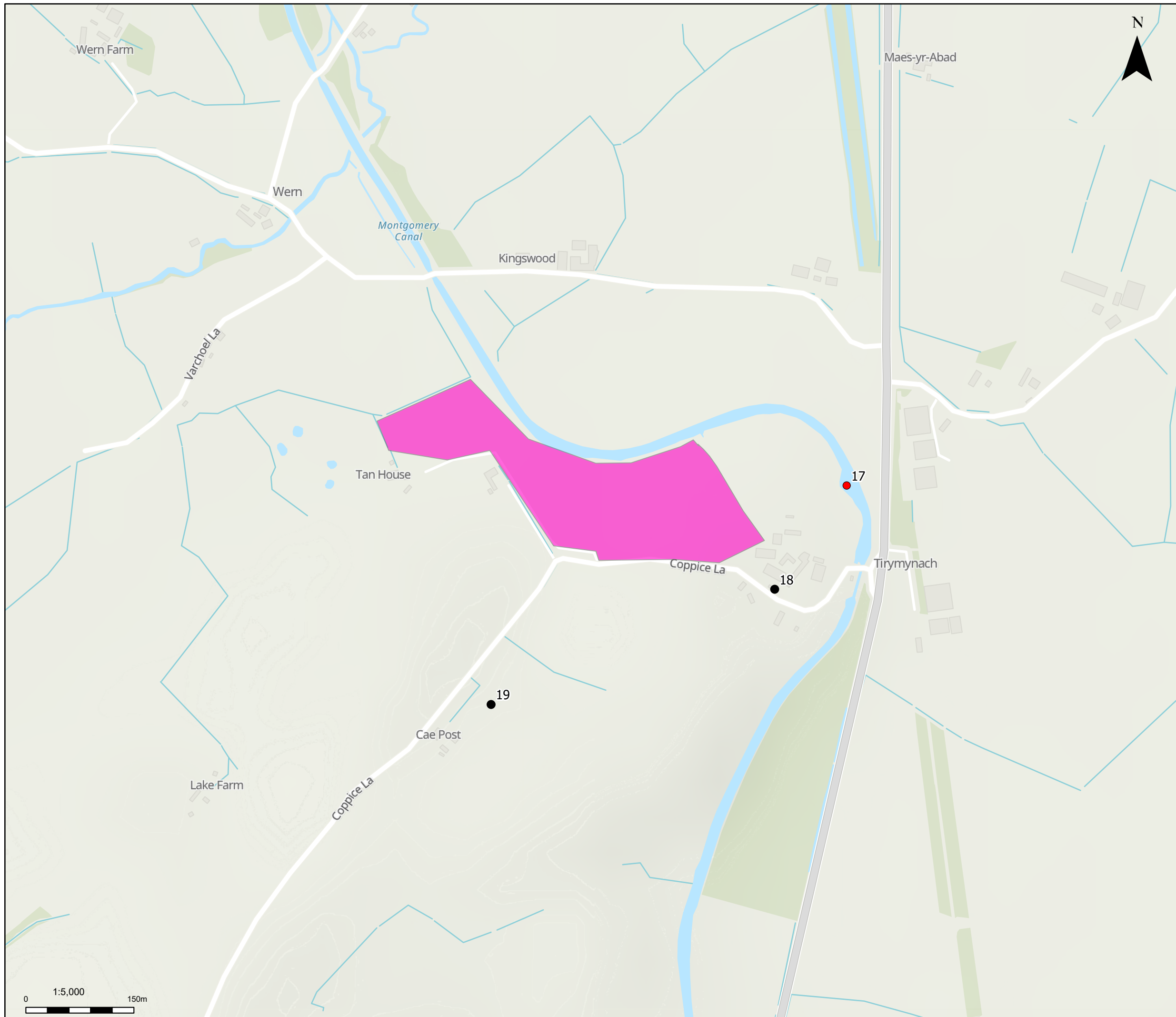
**Figure 3 -  
 Results of assessment  
 of GCN presence 2023  
 Page 2**

Designed	B. Murray	Date	17 AUG 23	Signed
Drawn	M. Shetye	Date	17 AUG 23	Signed
Checked	B. Murray	Date	17 AUG 23	Signed
Approved	M. Girvan	Date	17 AUG 23	Signed
Scale:	1:10,000	Datum:	AOD	
Original Size:	A3	Grid:	OS	
Suitability Code:	S2	Project Number:	10048826	

Suitability Description:

**For Information**

Drawing Number: 10048826-ARC-EBD-ZZ-DR-ZZ-0004 P01  
 Revision: P01



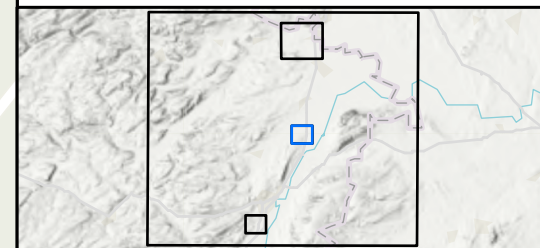
**Legend**

Pond locations

eDNA Result 2023

- N/A
- Negative
- Works Locations

**Notes**  
 Service Layer Credits: Contains OS data © Crown Copyright and database right 2023  
 Contains data from OS Zoomstack, Contains OS data © Crown Copyright and database right 2019



Rev	Date	Description	Drawn	Check	Approv
01	17/08/23	INITIAL ISSUE	MS	BM	MG

Client:

**PROJECT:**  
MONTGOMERY CANAL

**Site**

Montgomery Canal

**Client**

National Highways

Registered office:  
80Fen  
80 Fenchurch Street  
London  
EC3M 4BY

Coordinating Office:  
80Fen  
80 Fenchurch Street  
London  
EC3M 4BY

[www.arcadis.com](http://www.arcadis.com)

**Title:**

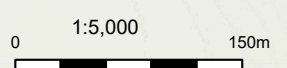
**Figure 3 -  
Results of assessment  
of GCN presence 2023  
Page 3**

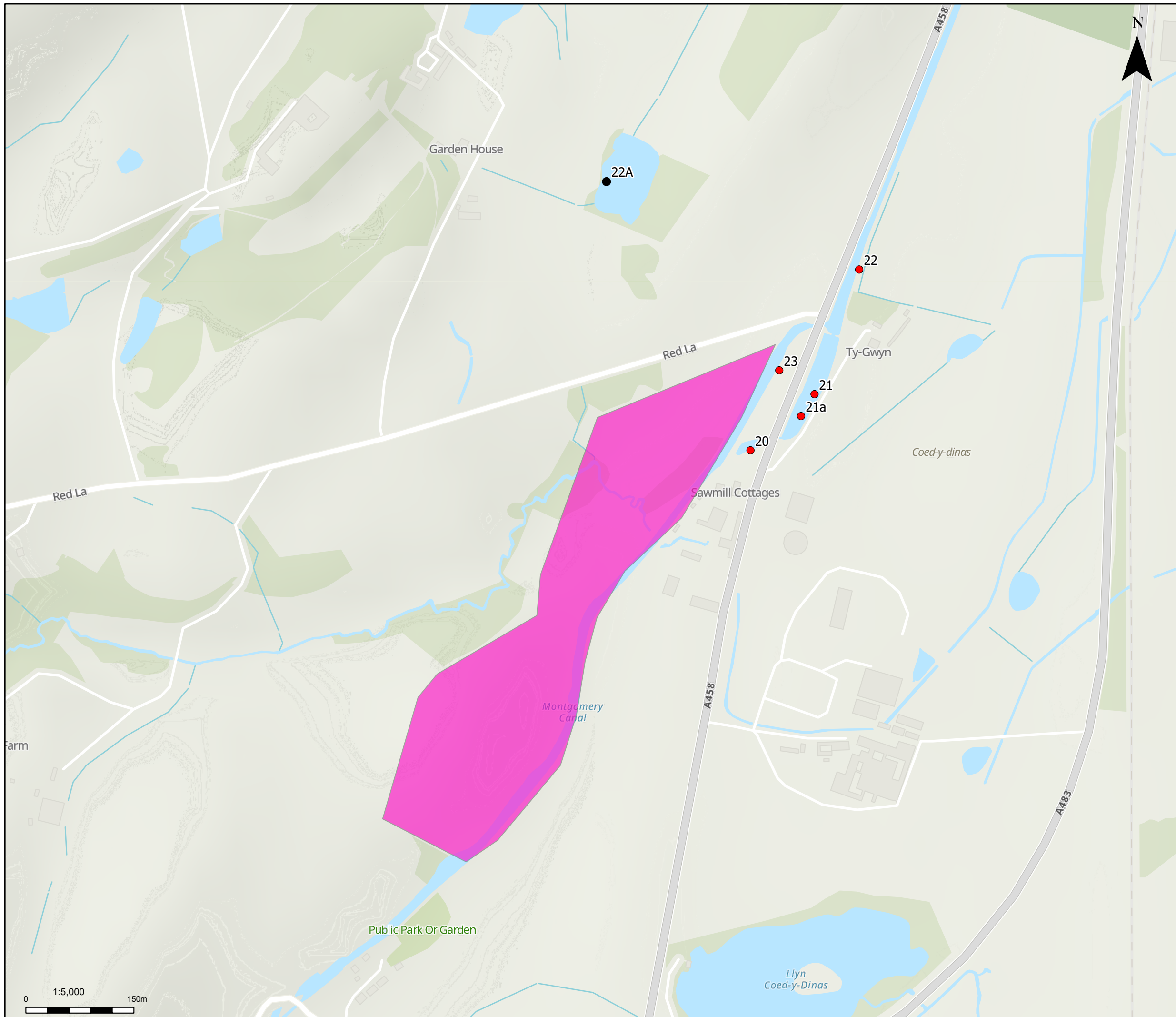
Designed	B. Murray	Date: 17 AUG 23	Signed
Drawn	M. Shetye	Date: 17 AUG 23	Signed
Checked	B. Murray	Date: 17 AUG 23	Signed
Approved	M. Girvan	Date: 17 AUG 23	Signed
Scale:	1:5,000	Datum:	AOD
Original Size:	A3	Grid:	OS
Suitability Code:	S2	Project Number:	10048826

Suitability Description:

**For Information**

Drawing Number: 10048826-ARC-EBD-ZZ-DR-ZZ-0004 P01





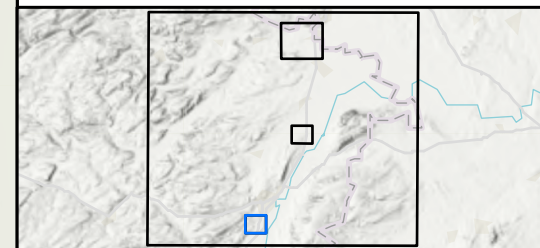
**Legend**

Pond locations

eDNA Result 2023


- N/A
- Negative
- Works Locations

**Notes**  
 Service Layer Credits: Contains OS data © Crown Copyright and database right 2023  
 Contains data from OS Zoomstack, Contains OS data © Crown Copyright and database right 2019



Rev	Date	Description	Drawn	Check	Approv
01	17/08/23	INITIAL ISSUE	MS	BM	MG

Client:



**PROJECT: MONTGOMERY CANAL**

Site: Montgomery Canal      Client: National Highways



Registered office: 80Fen, 80 Fenchurch Street, London, EC3M 4BY  
 Coordinating Office: 80Fen, 80 Fenchurch Street, London, EC3M 4BY  
[www.arcadis.com](http://www.arcadis.com)

Title: **Figure 3 - Results of assessment of GCN presence 2023 Page 4**

Designed	B. Murray	Date: 17 AUG 23	Signed
Drawn	M. Shetye	Date: 17 AUG 23	Signed
Checked	B. Murray	Date: 17 AUG 23	Signed
Approved	M. Girvan	Date: 17 AUG 23	Signed
Scale:	1:5,000	Datum:	AOD
Original Size:	A3	Grid:	OS
Suitability Code:	S2	Project Number:	10048826

Suitability Description: **For Information**

Drawing Number:	10048826-ARC-EBD-ZZ-DR-ZZ-0004	Revision:	P01
-----------------	--------------------------------	-----------	-----

