

Design updates since 23rd March 2021: Memorial Park

This panel provides an update on what we've been working on regarding Memorial Park since we shared our chosen spillway design.

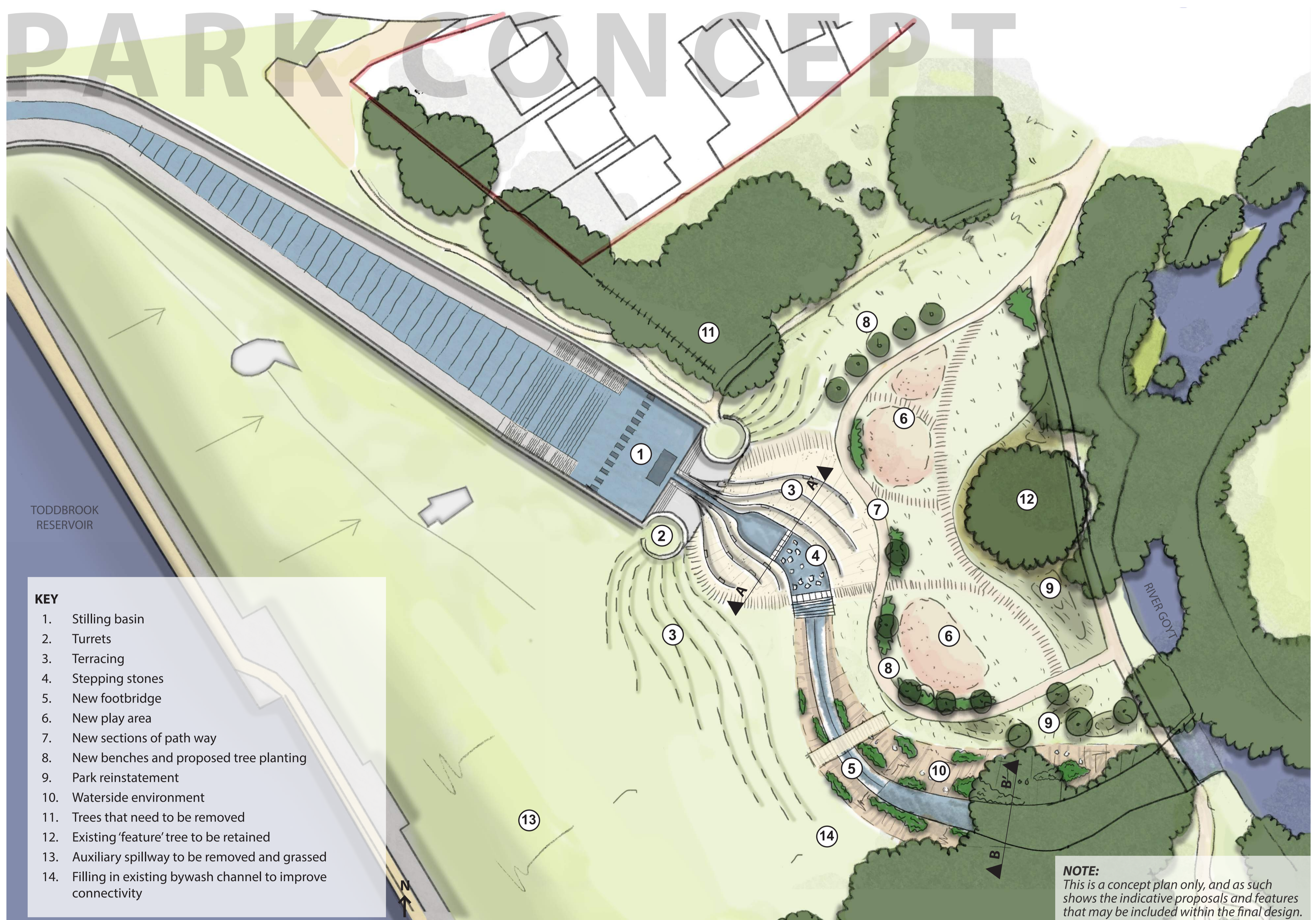
Memorial Park

We are continuing to work with High Peak Borough Council to develop our design for how the spillway interacts with the park area, both during construction and once the project has been completed, and the plan below represents our latest concept. Our design work to integrate the new water channel will take flows from the spillway through the park area and to the River Goyt. The design considers the safety of the park users, aiming to create an interactive and usable public space whilst respecting the heritage and environment of Memorial Park. Replacement play equipment will be located to the north of the channel.

Some key features of our concept that we could include are:

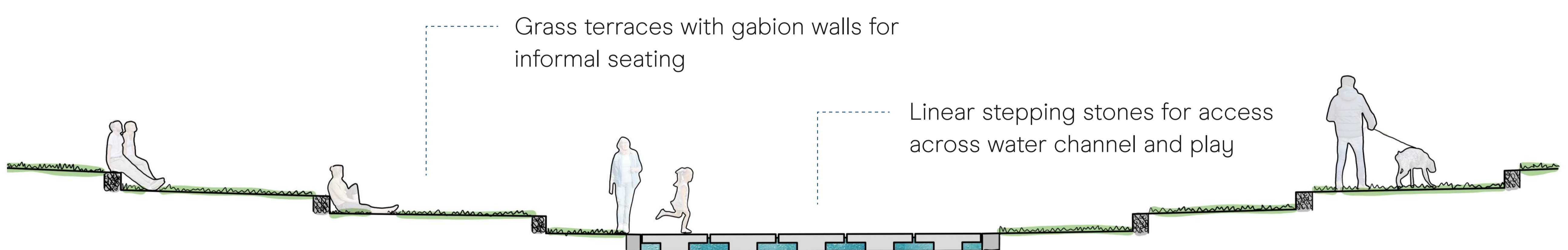
- terraced areas around the southern end of the spillway
- stepping stones or a new bridge across the channel, to maintain connectivity across the park and make use of new space
- tree planting and new benches around new paths
- a more naturalised channel and surrounding area towards the downstream end of the channel to the river

Our latest 'concept' design for the park area is shown below.



Memorial Park draft concept plan

Illustrative section through channel and park upstream



Illustrative section through channel and park downstream

