

Caring for Old Ford Lock

We're the charity working to protect and bring to life this 250-year-old network of canals and rivers spanning England and Wales. Not so long ago many canals were abandoned, and some lost forever. Today, with your support, wildlife is recovering, history is alive, boats are plentiful and spending time in this environment is contributing to our health and happiness.

Our mission is to keep this extraordinary network of canals and rivers alive, teeming with wildlife, transforming places they run through and enriching all of our lives. Your support today could help us care for London's canals and many more places, for today and generations to come.



DONATE



Please support our work & donate today

SCAN ME



The task of protecting the finest examples of working industrial heritage including Bow Wharf, and the wildlife that calls it home, is growing all the time. As a charity we need you by our side more than ever. Please support our work today.

Registered with



FUNDRAISING
REGULATOR



Canal &
River Trust

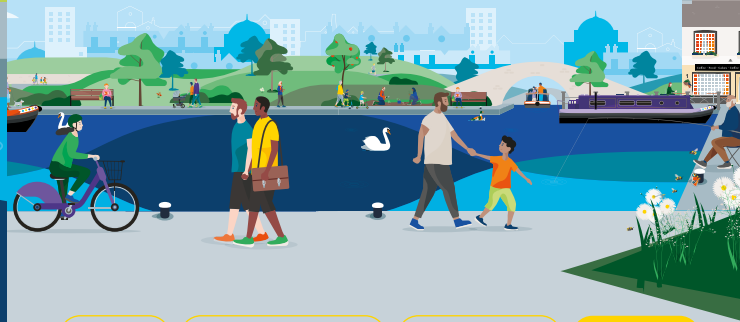
Making life better by water

Keeping history alive

The construction of the Hertford Union Canal in 1830 created a shortcut between the River Thames and the River Lee Navigation. It's known locally as 'Duckett's Canal' after Sir George Duckett, who first envisaged the canal. However, the waterway was a commercial failure. The three locks at Old Ford had huge drops, making it tricky for boats to pass through and a dam was built to prevent the Regent's Canal from losing water to the new waterway.

The Regent's Canal Company finally bought the canal in 1857, removed the dam and improved navigation, transforming it into a popular mooring spot.

Discover lots of fun things to do with the family by and on the water. Go to canalrivertrust.org.uk/explorers



Enjoy

Take Action

Volunteer

Donate

canalrivertrust.org.uk

Registered charity no. 1146792

March 2024



Canal &
River Trust

Welcome to Old Ford Lock & Bow Wharf

Escape from the city and connect with nature.



We're the charity making life better by water

Bearing remains from our industrial past, Old Ford Lock and Bow Wharf is a great place for wildlife watching and spotting historic canal features.



Find your way around

- towpath
- café
- pub
- toilets
- bench/picnic area
- play area
- point of interest
- parking
- London Underground station

Visit us at:
Bow Wharf,
Wennington Road,
E3 5SN

Allow 1–2 hours
for your visit

Stay SAFE
Stay Away From the Edge!

For more information on visiting safely:
canalrivertrust.org.uk/safety

Details correct at time of print, please check before travelling.

5 things to do at Old Ford Lock & Bow Wharf

- 1** Enjoy a traffic-free cycle ride along the towpath, you can head east to Queen Elizabeth Olympic Park, north west to Camden or south to Limehouse and the River Thames.
- 2** Take a stroll around Victoria Park next to the canal.
- 3** Pause, watch the wildlife and enjoy spending time by water.
- 4** Look for the ramps in the Regent's Canal, they were built to help horses towing canal boats to get out when they fell in.
- 5** Watch the colourful narrowboats making their way along the waterway.

Did you know?

Boaters were charged a toll of one shilling, the equivalent of five pence today. A shilling was more than a day's wages for the average worker in London in the 1800s.

