

Caring for the Grand Union Canal

We're the charity working to protect and bring to life this 250-year-old network of canals and rivers spanning England and Wales. Not so long ago many canals were abandoned, and some lost forever. Today, with your support, wildlife is recovering, history is alive, boats are plentiful and spending time in this environment is contributing to our health and happiness.

Our mission is to keep this extraordinary network of canals and rivers alive, teeming with wildlife, transforming places they run through and enriching all of our lives. Your support today could help us care for Hertfordshire's canals and many more places, for today and generations to come.



DONATE



Please support our work & donate today

SCAN ME



The task of protecting the finest examples of working industrial heritage including Berkhamsted Locks, and the wildlife that calls it home, is growing all the time. As a charity we need you by our side more than ever. Please support our work today.

Registered with



FUNDRAISING
REGULATOR



Canal &
River Trust

Making life better by water

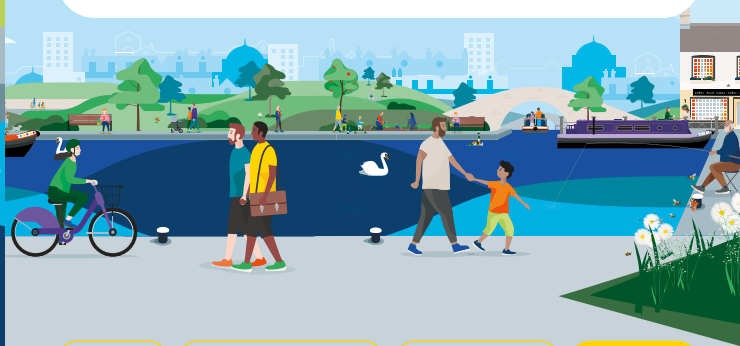
Keeping history alive

The Grand Union Canal was once one of Britain's key transport routes. It links London with Birmingham and at 137 miles (220km) is the longest canal in the country.

Originally known as the Grand Junction Canal, it provided a route between London and Birmingham, cutting through Berkhamsted. Castle Wharf was once the centre of canal trade and boat building.

Today, Berkhamsted is a great place to explore the canal, especially by bike – you can enjoy a traffic-free ride all the way to London.

Discover lots of fun things to do with the family by and on the water. Go to canalrivertrust.org.uk/explorers



Enjoy

Take Action

Volunteer

Donate

canalrivertrust.org.uk

Registered charity no. 1146792

March 2024



Canal &
River Trust

Welcome to Berkhamsted

Picture-perfect walks in this pretty town.



We're the charity making life better by water



Once a busy inland port and the centre of boat building activity, Berkhamsted makes for a fascinating day out.

Find your way around

- towpath
- café
- pub
- toilets
- shopping
- play area
- point of interest
- art installation
- parking
- railway station

Visit us at:
Canal Fields,
Broadwater,
Berkhamsted HP4 2AL

Allow 1–2 hours
for your visit

N
Map not to scale:
covers approx.
1¼ mile / 2.8km

Stay SAFE
Stay Away From the Edge!

For more information on visiting safely:
canalrivertrust.org.uk/safety

Details correct at time of print, please check before travelling.

5 things to do at Berkhamsted

- 1** Stroll along the towpath and see the Canadian totem pole, which marks the site of an old boat building and timber yard.
- 2** Take a picnic and enjoy spending some time by water.
- 3** Visit Ashridge estate woods, once the home of Francis Edgerton, Duke of Bridgewater – who was also known as the Canal Duke after he invested money to build the first canals.
- 4** See the ruins of Berkhamsted Castle built by one of William the Conqueror's knights.
- 5** Enjoy a drink and watch the colourful narrowboats making their way along the canal.

Did you know?

At 173 High Street, Berkhamsted, you'll find a medieval building built between 1277 and 1297. It is believed to be the oldest extant jettied timber framed building in Great Britain.

