

Caring for the National Waterways Museum

We're the charity working to protect and bring to life this 250-year-old network of canals and rivers spanning England and Wales. Not so long ago many canals were abandoned, and some lost forever. Today, with your support, wildlife is recovering, history is alive, boats are plentiful and spending time in this environment is contributing to our health and happiness.

Our mission is to keep this extraordinary network of canals and rivers alive, teeming with wildlife, transforming places they run through and enriching all of our lives. Your support today could help us care for the National Waterways Museum at Ellesmere Port and many more places, for today and generations to come.



DONATE



Please support our work & donate today

SCAN ME



Canal & River Trust

Making life better by water

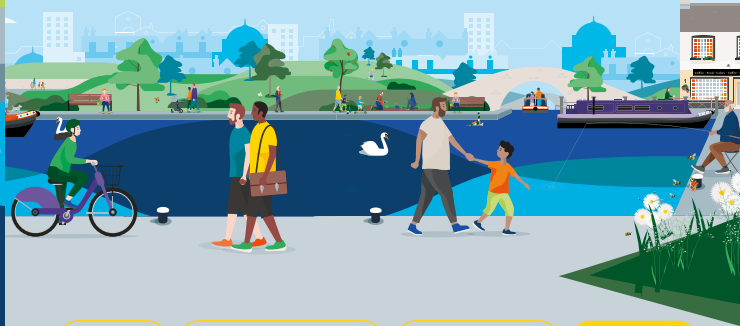
Keeping history alive

The National Waterways Museum occupies the old dock buildings of Ellesmere Port which originally linked the Shropshire Union Canal to the River Mersey.

Designed by renowned canal engineer, Thomas Telford, Ellesmere Port was the largest inland waterway dock complex in the UK and was a working dockyard until the 1950s.

Today it is a conservation area with 19 Grade II listed buildings including a forge, stables and cottages.

Discover lots of fun things to do with the family by and on the water. Go to canalrivertrust.org.uk/explorers



Enjoy

Take Action

Volunteer

Donate

canalrivertrust.org.uk

Registered charity no. 1146792

March 2024



Canal & River Trust

Welcome to National Waterways Museum, Ellesmere Port

Take a trip down memory lane.



We're the charity making life better by water

The task of protecting the finest examples of working industrial heritage including the National Waterways Museum at Ellesmere Port, and the wildlife that calls it home, is growing all the time. As a charity we need you by our side more than ever. Please support our work today.

Registered with



FUNDRAISING REGULATOR

Step inside the National Waterways Museum and discover the fascinating history of our canals and the people who worked on them.



South Pier Road,
Ellesmere Port CH65 4FW

Allow a full day
for your visit

Find your way around

- | | | |
|--------------------|--------------------------|-------------------|
| Towpath | Baby changing facilities | Bench/picnic area |
| Accessible routes | Point of interest | Shop |
| Reception | Historic boats | Mooring |
| Café | Exhibition space | Parking |
| Toilets | Viewing point | railway station |
| Accessible toilets | Play area | |

N
Map not to scale:
covers approx.
1/2 mile / 0.8km

Stay SAFE
Stay Away From the Edge!

For more information on visiting safely:
canalrivertrust.org.uk/safety

Details correct at time of print, please check before travelling.

5 things to do at the National Waterways Museum, Ellesmere Port

- 1** Discover historic canal boats and see what it would have been like to live and work on the canals.
- 2** Visit Porters Row, the cottages built for dock workers in 1833.
- 3** See the Power Hall and Pump House and the many engines maintained by our volunteers.
- 4** Pause for a chat with our friendly museum staff and volunteers, they'll tell you more about the history of the site and the canal.
- 5** Experience our many events including the Easter Boat Gathering, Canal Town and Halloween and Christmas activities.

Did you know?

The museum is home to the largest collection of canal boats in the world, from colourful painted narrowboats to icebreakers.

