

## Caring for King's Cross

We're the charity working to protect and bring to life this 250-year-old network of canals and rivers spanning England and Wales. Not so long ago many canals were abandoned, and some lost forever. Today, with your support, wildlife is recovering, history is alive, boats are plentiful and spending time in this environment is contributing to our health and happiness.

Our mission is to keep this extraordinary network of canals and rivers alive, teeming with wildlife, transforming places they run through and enriching all of our lives. Your support today could help us care for London's canals and many more places, for today and generations to come.



DONATE



Please support our work & donate today

SCAN ME



The task of protecting the finest examples of working industrial heritage including St Pancras Lock, and the wildlife that calls it home, is growing all the time. As a charity we need you by our side more than ever. Please support our work today.

Registered with



FUNDRAISING  
REGULATOR



Canal &  
River Trust

Making life better by water

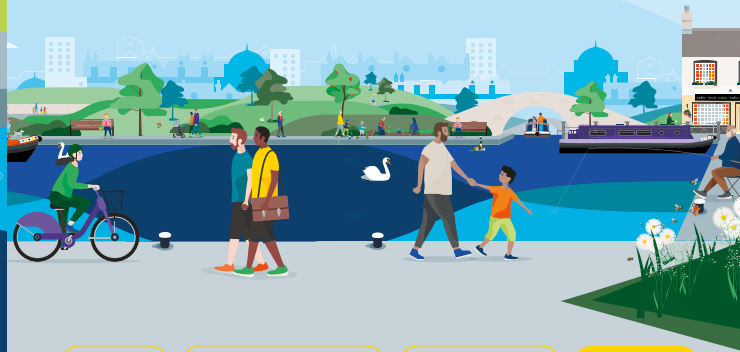
## Keeping history alive

The nine-mile long Regent's Canal gently passes through London from the River Thames at Limehouse to Paddington, making its way through the heart of King's Cross.

For over 140 years, this now peaceful waterway was a hive of industry and activity, transporting coal, goods and building materials to the city.

Today, King's Cross is a place where two ages of transport meet – canal boats quietly chug along the waterway and the Eurostar streams past above.

Discover lots of fun things to do with the family by and on the water. Go to [canalrivertrust.org.uk/explorers](https://canalrivertrust.org.uk/explorers)



Enjoy

Take Action

Volunteer

Donate

[canalrivertrust.org.uk](https://canalrivertrust.org.uk)

Registered charity no. 1146792

March 2024



Canal &  
River Trust

## Welcome to King's Cross


An unexpected oasis of calm and peace.



We're the charity making life better by water

Sandwiched between King's Cross and St Pancras railway stations is the Regent's Canal. It's an unexpected oasis of calm and peace amid the hectic pace of long distance rail travel.

Visit us at:  
Central St Martins, N1C 4AA

 Allow 1–2 hours for this visit

### Find your way around

- |  |  |
|--|--|
|  towpath           |  point of interest  |
|  tunnel            |  museum             |
|  café              |  marina             |
|  pub               |  trip boat          |
|  food & drink      |  parking            |
|  toilets           |  London Underground |
|  shopping          |  railway station    |
|  bench/picnic area |  |



**Stay SAFE**  
**Stay Away From the Edge!**  
For more information on visiting safely:  
[canalrivertrust.org.uk/safety](http://canalrivertrust.org.uk/safety)

N  
Map not to scale:  
covers approx.  
1 mile / 1.6km

Details correct at time of print,  
please check before travelling.

## 5 things to do at King's Cross

- 1** Visit the London Canal Museum and discover more about the city's waterways.
- 2** Enjoy a picnic on the Canalside Granary Steps.
- 3** Wander along the towpath to Islington Tunnel and watch the boats emerge (400m).
- 4** As you watch the boats on the canal, keep an eye out for trains too – the tracks from King's Cross pass under the canal and those from St Pancras run above it.
- 5** Escape the busy roads and follow the towpath to Little Venice and Camden (1 mile/1.7km).

### Did you know?

The building that now houses Central St Martins was once a grain store and was designed by Lewis Cubitt in 1852, while a past occupant of the London Canal Museum was Swiss entrepreneur Carlo Gatti. Gatti introduced ice cream to London and used the building to store shipments of ice from Scandinavia.

