

Caring for the Huddersfield Narrow Canal

We're the charity working to protect and bring to life this 250-year-old network of canals and rivers spanning England and Wales. Not so long ago many canals were abandoned, and some lost forever. Today, with your support, wildlife is recovering, history is alive, boats are plentiful and spending time in this environment is contributing to our health and happiness.

Our mission is to keep this extraordinary network of canals and rivers alive, teeming with wildlife, transforming places they run through and enriching all of our lives. Your support today could help us care for the Huddersfield Narrow Canal and many more places, for today and generations to come.



DONATE



Please support our work & donate today

SCAN ME



The task of protecting the finest examples of working industrial heritage including the Huddersfield Narrow Canal, and the wildlife that calls it home, is growing all the time. As a charity we need you by our side more than ever. Please support our work today.

Registered with



FUNDRAISING
REGULATOR



Canal &
River Trust

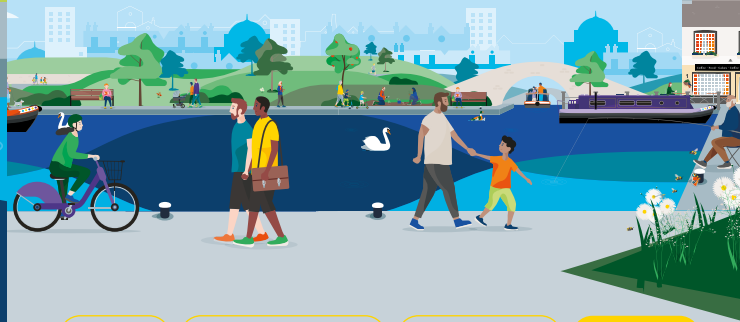
Making life better by water

Keeping history alive

Tucked away in a valley of the Pennines on the Huddersfield Narrow Canal, Uppermill was once a manufacturing hub with its wool and cotton mills powered by the River Tame. When the canal opened in 1811, it provided a route to transport finished textiles across the Pennines to Yorkshire or Manchester.

The canal operated for approximately 140 years before being mostly abandoned. Following years of campaigning and restoration, it was fully reopened in 2001 and is enjoyed by thousands of boaters, walkers and cyclists today.

Discover lots of fun things to do with the family by and on the water. Go to canalrivertrust.org.uk/explorers



Enjoy

Take Action

Volunteer

Donate

canalrivertrust.org.uk

Registered charity no. 1146792

March 2024



Canal &
River Trust

Welcome to Uppermill


Waterside walks and rich industrial heritage.



We're the charity making life better by water

Surrounded by stunning countryside on the edge of the Pennines, Uppermill is the perfect place for a canal or riverside walk.

Visit us at:
Wool Road,
Uppermill OL3 5QR

 Allow 2 hours for your visit

Find your way around

-  towpath
-  aqueduct
-  café
-  pub
-  bench/picnic area
-  point of interest
-  museum
-  information
-  trip boat
-  parking
-  railway station

Stay SAFE
Stay Away From the Edge!

For more information on visiting safely: canalrivertrust.org.uk/safety



N
Map not to scale:
covers approx.
1 ½ mile / 2.4km

Details correct at time of print, please check before travelling.

5 things to do at Uppermill

- 1** **Cruise** along the canal on a boat trip, boats depart from behind Saddleworth Museum.
- 2** **Walk** along the towpath (1.5 miles/2.5km) to where the canal disappears into the 3 mile (5km) long Standedge Tunnel – one of the wonders of the waterways.
- 3** **Stroll** under the magnificent Grade II listed railway viaduct which opened in 1849.
- 4** **Visit** Saddleworth Museum to discover more about Uppermill and the local area.
- 5** **Take** a look at Uppermill Methodist Church, constructed in 1913 its octagonal tower is 70ft/21m high.

Did you know?
The Huddersfield Narrow Canal scales the Pennines. Its summit is the highest stretch of canal in Britain at 646ft/197m above sea level.

