

Restoring Toddbrook Reservoir



Public Consultation into Design Options for Restoring Toddbrook Reservoir – Have Your Say

A message from the Daniel Greenhalgh,
Canal & River Trust North West Director

We hope you and your families have continued to stay safe and well during these challenging times. We are pleased to tell you that, despite the challenges imposed by coronavirus restrictions, the interim phase of works to make safe the damaged auxiliary spillway on the Toddbrook Reservoir dam have now been completed. Our contractors Kier will soon be removing much of their equipment and site cabins, and the waterside footpath along the northern side of the reservoir will reopen to the public. The high-volume pumps in the bottom of the reservoir will remain in place to keep it drained until the main repair work is completed – a major project that is likely to take up to three years.

We have been working with expert design engineering consultants Arup to consider all the different design alternatives for the permanent restoration of the reservoir. Our specialists have examined 13 options which have now been narrowed down to two potential designs.

Our aim has always been to keep residents involved and informed. We appreciate the ongoing works have had a big impact on many residents, clubs and businesses, and we know the second major phase of works is likely to continue to cause some disruption. However as always we welcome your views and feedback on the proposed repair options.

We will obviously be taking decisions on the best engineering advice but there are a number of ideas for community enhancement and we would like to have your views about what you would prefer to see in the area.

We will be launching a three week public consultation on Wednesday 9 September. Due to restrictions around coronavirus, this will primarily be a virtual online consultation although there will be a chance to see the plans and discuss proposals with our expert engineers at two (socially distanced) physical events to be held on Friday 18 September (2pm – 6pm) and Saturday 19 September (10am – 3pm) at the Transshipment Warehouse in the Whaley Bridge Canal Basin. No booking is required and numbers entering the building will be controlled on the day, which may result in a small amount of queueing at busy times.

For more details of the proposed repair options and to register your views in the public consultation, please go to our website: canalrivertrust.org.uk/restoring-toddbrook-reservoir

Thank you for your support

September 2020



Two shortlisted repair options

“We would like your views on the two preferred shortlisted options for the permanent repair of Toddbrook Reservoir. Both involve the creation of new overflow spillway channels from the reservoir into the River Goyt.”

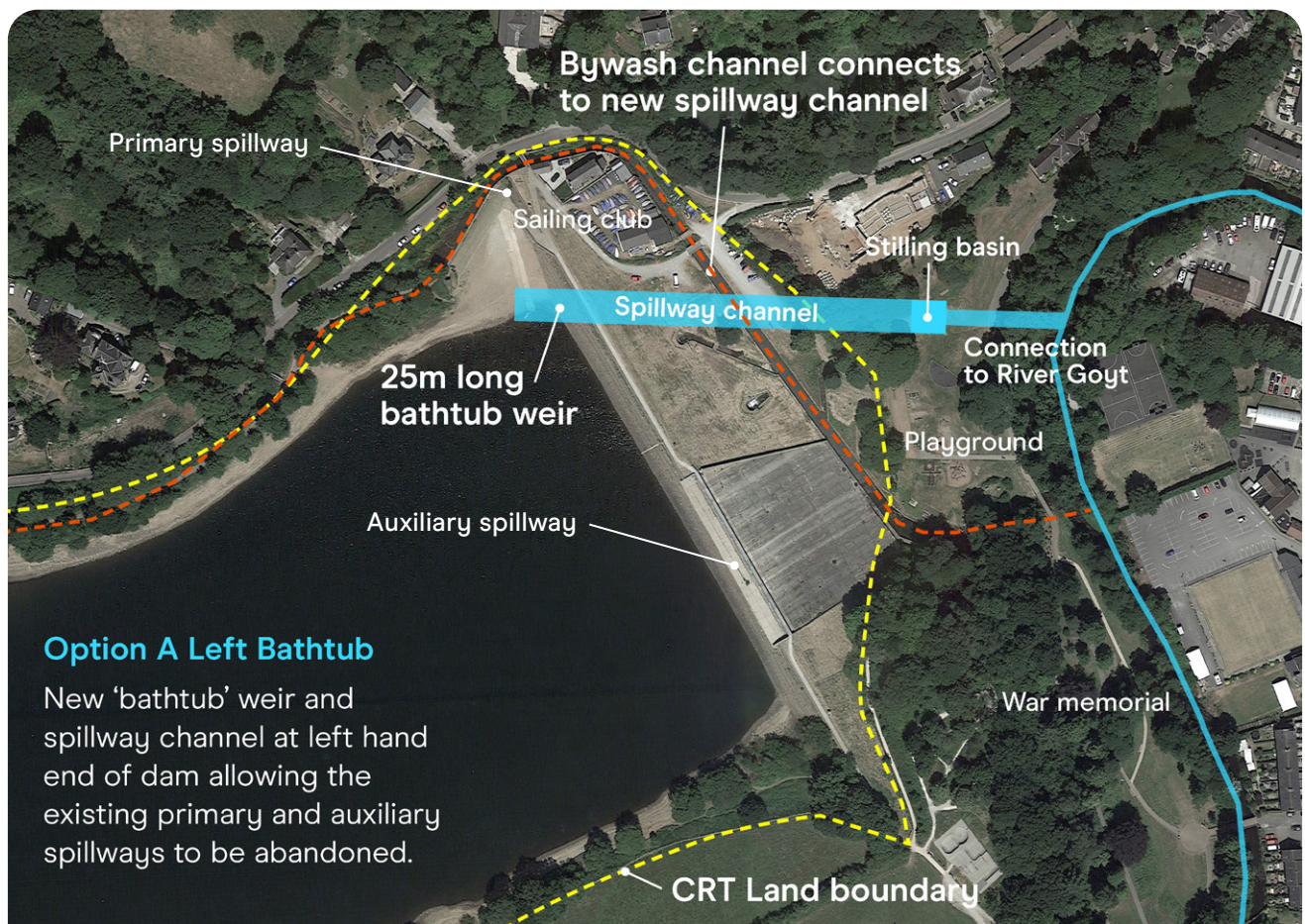
Option A:

New spillway channel near the sailing club

On the Sailing Club side, a new 25m curved weir, in the shape of a two storey 'bathtub', would be constructed from the corner of the reservoir. This would feed into a new channel (120m long x 15m wide) passing the end of the club carpark and through the park. The existing bywash channel would be diverted into the new spillway channel. Energy in the water would be slowed by passing through an open flat stilling basin (15m long) before entering the River Goyt.

The spillway channel through the park could be turned into a water feature or be placed out of sight in a culvert.

We are committed to securing the sailing club facilities and where this option may impinge on the operation of the club, eg the launch slipway, we pledge to make suitable alternative arrangements.



Option A Left Bathtub

New 'bathtub' weir and spillway channel at left hand end of dam allowing the existing primary and auxiliary spillways to be abandoned.

"Under either option, the existing auxiliary spillway (damaged last summer) becomes redundant and replaced with a grassy slope. The smaller original primary spillway near the Sailing Club will also be de-commissioned.

As part of the decision-making process, we still need to commission a number of ground

investigation and environmental surveys. Discussions with our near neighbours, including the Sailing Club and Whaley Bridge Athletic Football Club, will also play a key role in arriving at a decision on the viability of each option. Thank you."

Simon Bamford,
Canal & River Trust Asset Improvement Director

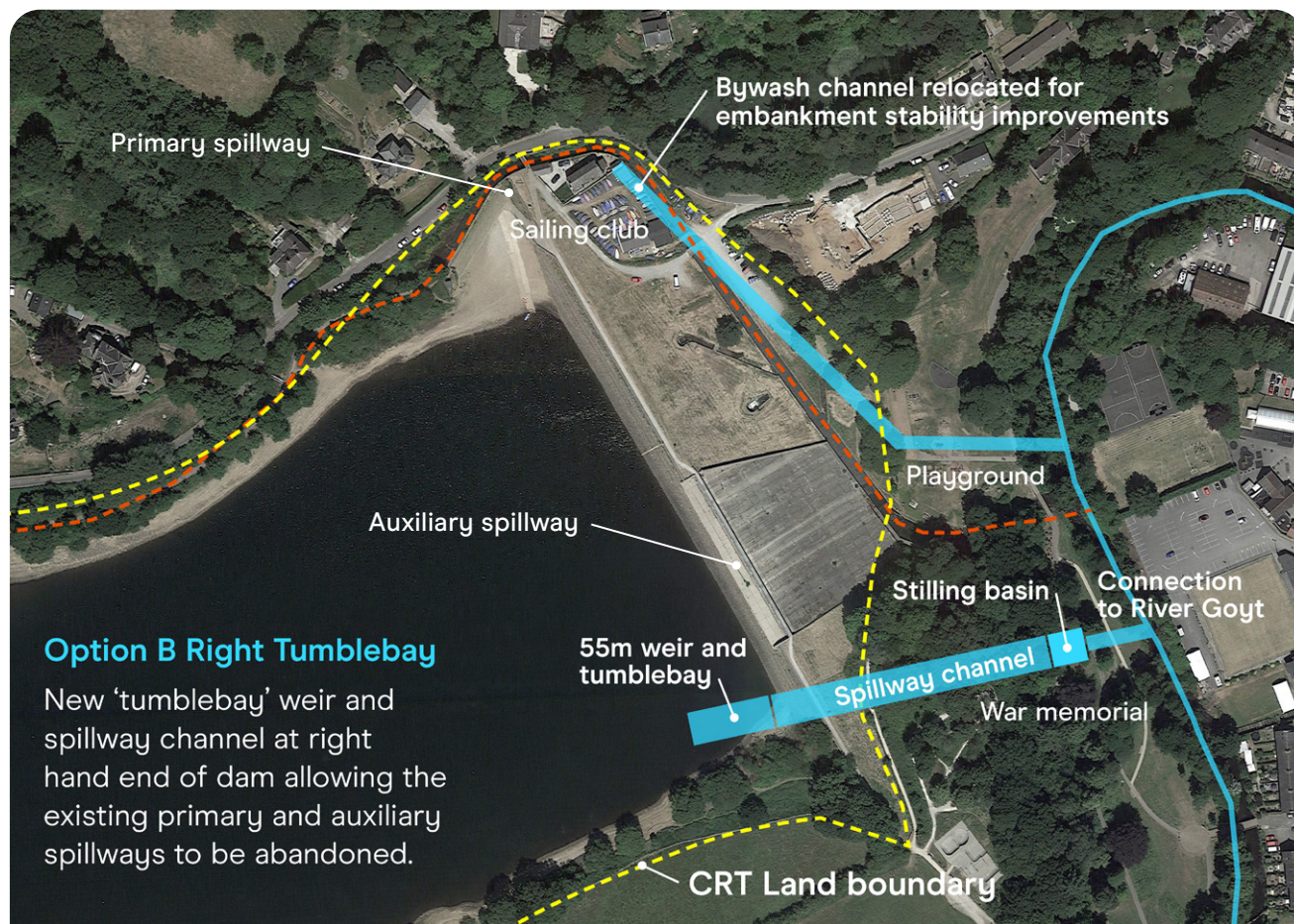
Option B:

New spillway channel through the woodland

On the football club side, a new stepped 'tumblebay' weir would be created in the corner of the reservoir, connecting into a new spillway channel (c. 100m long x 20m wide), running through the woodland area and Memorial Park. Energy from the spillway would be slowed by a stilling basin (15m long) at the bottom of the slope, before the water discharges into the River Goyt.

Preserving important wildlife habitats is a top priority for the Trust, so we will make sure that as much of the woodland is preserved as possible. We will be undertaking bat, bird and other environmental impact assessments to ensure important wildlife habitats are not disturbed.

We are aware of how important the War Memorial is to the town and will ensure that we treat this area with due sensitivity and importance.



Option B Right Tumblebay

New 'tumblebay' weir and spillway channel at right hand end of dam allowing the existing primary and auxiliary spillways to be abandoned.

How to give us your feedback

We would love to know what you think about the two shortlisted repair options and other environmental enhancements around Toddbrook Reservoir.

Your views are important to us and will be considered when the final design is chosen later this autumn. Please give us your views online, if possible, via our website canalrivertrust.org.uk/restoring-toddbrook-reservoir.

Or you can fill in this form and return it to us at the public consultation event or post to:
**Toddbrook Consultation, Canal & River Trust,
First Floor, North Station House 500 Elder Gate,
Milton Keynes, MK9 1BB.**

Questions

1. On a scale of 1 - 5*, how would you rate your support for **Option A – Sailing Club side** _____

2. On a scale of 1 - 5*, how would you rate your support for **Option B – Football Club side** _____

* 1 = low, 5 = high.

3. What are your reasons?

4. In both Option A and Option B, the new spillway will travel through parkland before it joins the River Goyt. Would you like to see the channel:

- ☐ Kept open and transformed into an attractive water feature?
- ☐ Covered over or enclosed in a culvert to allow for more usable space in the park?
- ☐ Other options?

5. A new footbridge is to be created across Todd Brook at the inlet where it joins the reservoir. What artistic interpretation would you like to see included as part of the inlet bridge? (please tick up to three options)

- ☐ Information boards on environmental features e.g. Reservoir wildlife
- ☐ Information boards on Whaley Bridge canal heritage e.g. Transhipment Warehouse
- ☐ Local reservoir/canal history
- ☐ Story of 2019 reservoir incident
- ☐ Art provided by school children

Other: _____

6. What other community enhancements would you like to see? (please tick three options)

- ☐ Circular walking route using the new inlet footbridge (subject to landowners' permission)
- ☐ Information boards on the reservoir history, heritage and environment
- ☐ Improved accessibility of footpaths (ie all-weather surfaces)
- ☐ Woodland walk with improved footpaths and information boards on ecology
- ☐ Provision of wild flowers
- ☐ Screening of particular sensitive views
- ☐ Tree planting

Other: _____

7. Are there any further comments you would like to make?

Please continue on another sheet of paper if necessary.

If you have further questions?

You can also contact the Trust by email toddbrook@canalrivertrust.org.uk

Charity no. 1146792

