

## Caring for Wolverhampton's canals and rivers

We're the charity working to protect and bring to life this 250-year-old network of canals and rivers spanning England and Wales. Not so long ago many canals were abandoned, and some lost forever. Today, with your support, wildlife is recovering, history is alive, boats are plentiful and spending time in this environment is contributing to our health and happiness.

Our mission is to keep this extraordinary network of canals and rivers alive, teeming with wildlife, transforming places they run through and enriching all of our lives. Your support today could help us care for Wolverhampton's canals and many more places, for today and generations to come.



DONATE



Please support our work & donate today

SCAN ME



Canal & River Trust

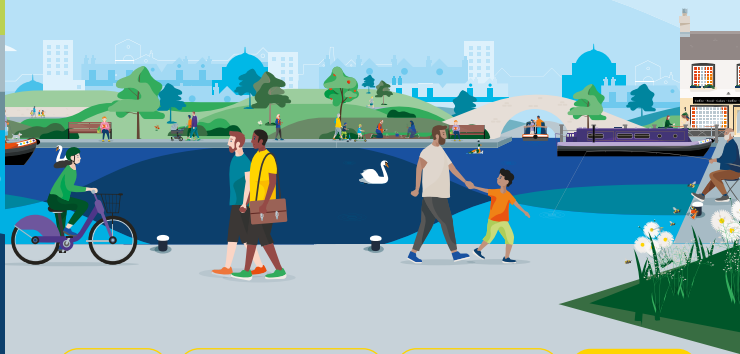
Making life better by water

## Keeping history alive

When the Staffordshire & Worcestershire Canal opened in 1772, it gave boats a route between the Trent & Mersey Canal and the River Severn. Bratch Locks were designed by canal engineer, James Brindley.

Bratch Pumping Station, which can be seen from the canal, was built in 1895 as a result of a dispute over water pricing between Bilston Urban District Council and the Borough of Wolverhampton, which provided Bilston's water until that point.

Discover lots of fun things to do with the family by and on the water. Go to [canalrivertrust.org.uk/explorers](https://canalrivertrust.org.uk/explorers)



Enjoy

Take Action

Volunteer

Donate

[canalrivertrust.org.uk](https://canalrivertrust.org.uk)

Registered charity no. 1146792

March 2024



Canal & River Trust

## Welcome to The Bratch

A glimpse of industrial heritage in the heart of the countryside.



We're the charity making life better by water

The task of protecting the finest examples of working industrial heritage including Bratch Locks, and the wildlife that calls it home, is growing all the time. As a charity we need you by our side more than ever. Please support our work today.


Registered with



FUNDRAISING REGULATOR


With three locks, two bridges and a tollhouse situated in an idyllic countryside location, Bratch Locks is one of the prettiest spots on the Staffordshire & Worcestershire Canal.

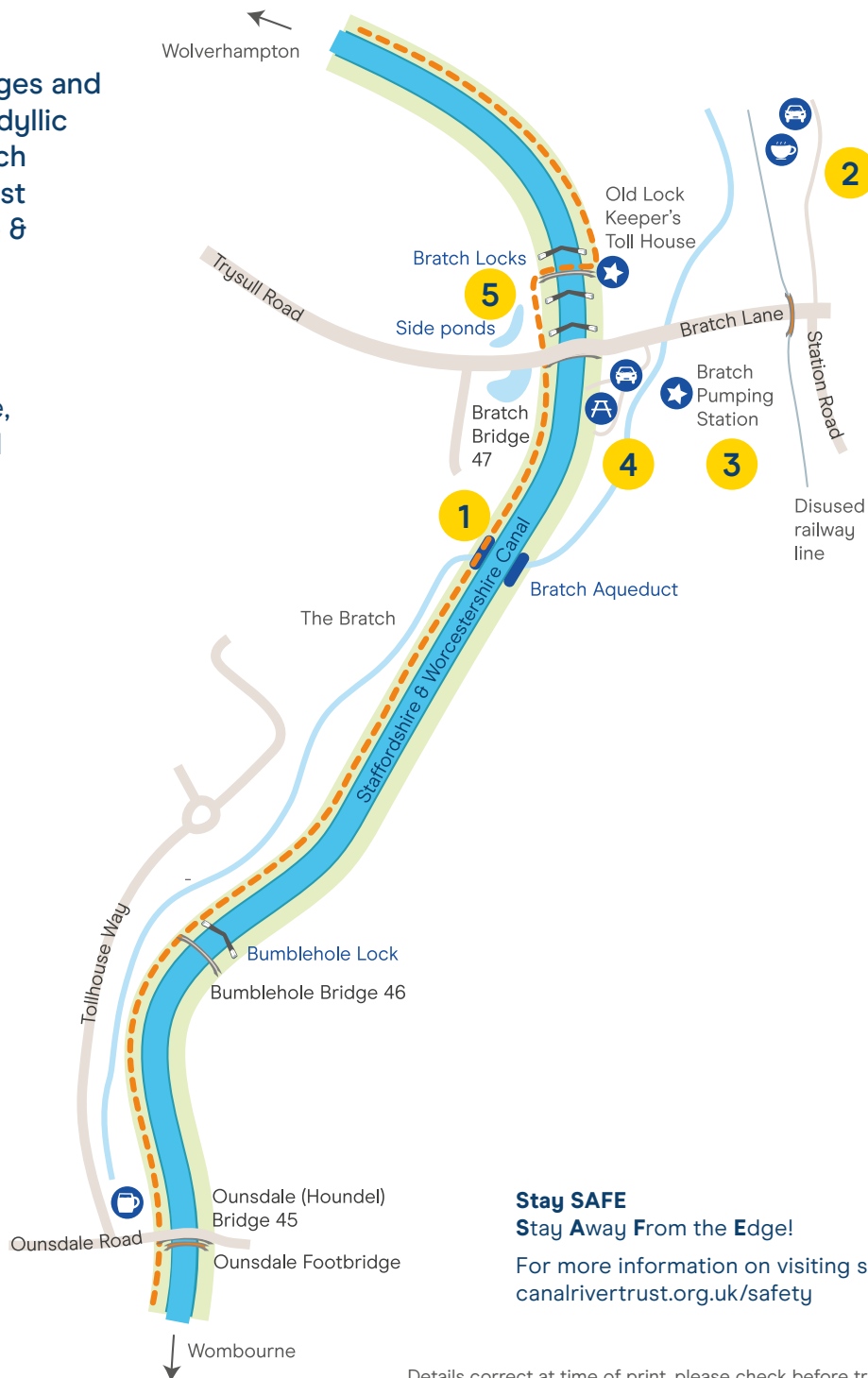
**Visit us at:**  
Bratch Locks, Wombourne,  
Wolverhampton WV5 8DH

 Allow 1-2 hours  
for your visit

### Find your way around

-  towpath
-  aqueduct
-  café
-  pub
-  bench/picnic area
-  point of interest
-  parking

 Map not to scale:  
covers approx.  
¾ mile / 1.2km



**Stay SAFE**  
**Stay Away From the Edge!**

For more information on visiting safely:  
[canalrivertrust.org.uk/safety](http://canalrivertrust.org.uk/safety)

Details correct at time of print, please check before travelling

## 5 things to do at Bratch Locks

- 1** Explore the area on the 1.4 mile (2.2km) circular walk along the disused railway line and canal.
- 2** Take a break in the Railway Cafe, a converted railway station.
- 3** Look at Bratch Pumping Station – there are just 50 steam pumping stations left on the canal network. The Friends of Bratch organise site visits and steaming days.
- 4** Relax with a picnic and enjoy being by water.
- 5** Pause for a chat with one of our friendly volunteers, they'll be able to tell you more about the area.

### Did you know?

In 2019 an unexploded World War II bomb was discovered in Bratch Locks. It was moved to a nearby quarry where a controlled explosion was carried out.

