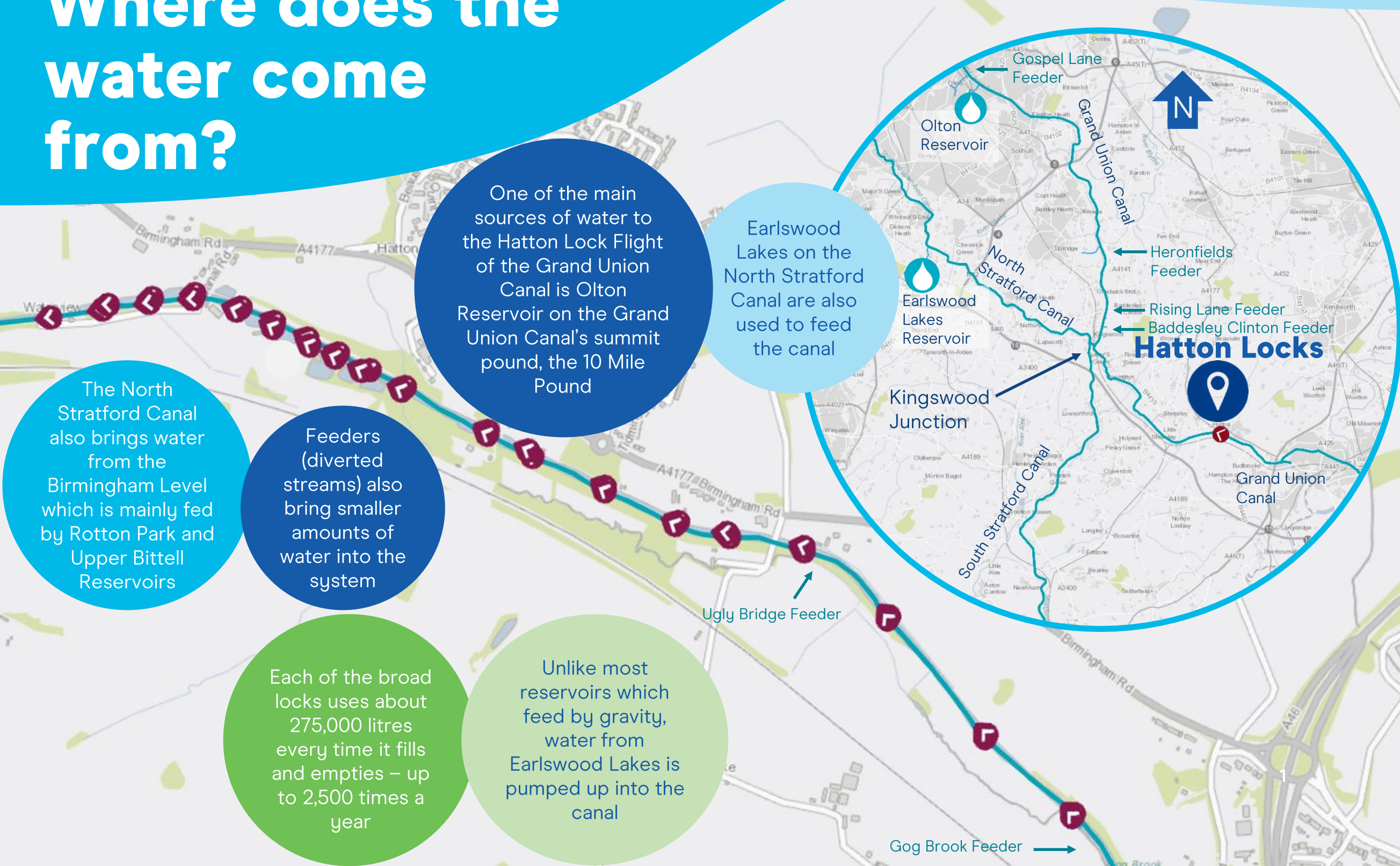


Where does the water come from?



One of the main sources of water to the Hatton Lock Flight of the Grand Union Canal is Olton Reservoir on the Grand Union Canal's summit pound, the 10 Mile Pound

Earlswood Lakes on the North Stratford Canal are also used to feed the canal

The North Stratford Canal also brings water from the Birmingham Level which is mainly fed by Rotton Park and Upper Bittell Reservoirs

Feeders (diverted streams) also bring smaller amounts of water into the system

Each of the broad locks uses about 275,000 litres every time it fills and empties – up to 2,500 times a year

Unlike most reservoirs which feed by gravity, water from Earlswood Lakes is pumped up into the canal

For other locations go to canalrivertrust.org.uk/water-sources