

Caring for Beeston Lock

We're the charity working to protect and bring to life this 250-year-old network of canals and rivers spanning England and Wales. Not so long ago many canals were abandoned, and some lost forever. Today, with your support, wildlife is recovering, history is alive, boats are plentiful and spending time in this environment is contributing to our health and happiness.

Our mission is to keep this extraordinary network of canals and rivers alive, teeming with wildlife, transforming places they run through and enriching all of our lives. Your support today could help us care for Beeston Lock and many more places, for today and generations to come.



DONATE



Please support our work & donate today

SCAN ME



Canal & River Trust

Making life better by water

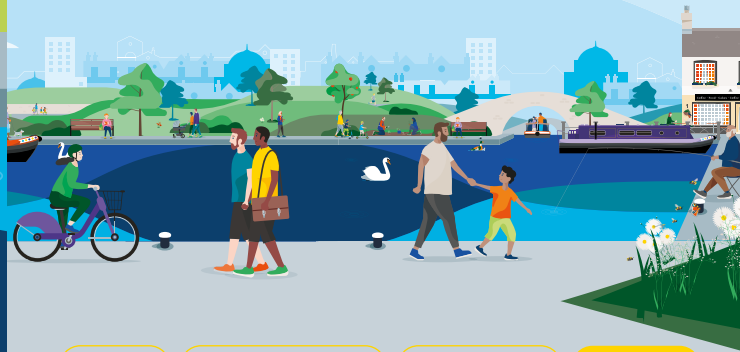
Keeping history alive

The Nottingham & Beeston Canal opened in 1796, connecting collieries at Wollaton and Bilborough to Langley Mill, and from there to the Cromford Canal.

Beeston Lock is where the canal bypasses unnavigable parts of the River Trent, enabling coal to be transported into Nottingham city centre. The canal then takes boaters through Castle Lock before returning them to the River Trent at Trent Bridge.

Today it is still used by boaters to bypass the tricky shallows of the Trent.

Discover lots of fun things to do with the family by and on the water. Go to canalrivertrust.org.uk/explorers



Enjoy

Take Action

Volunteer

Donate

canalrivertrust.org.uk

Registered charity no. 1146792

March 2024



Canal & River Trust

Welcome to Beeston Lock

A haven for wildlife.



We're the charity making life better by water

The task of protecting the finest examples of working industrial heritage including Beeston Lock, and the wildlife that calls it home, is growing all the time. As a charity we need you by our side more than ever. Please support our work today.


Registered with









FUNDRAISING REGULATOR

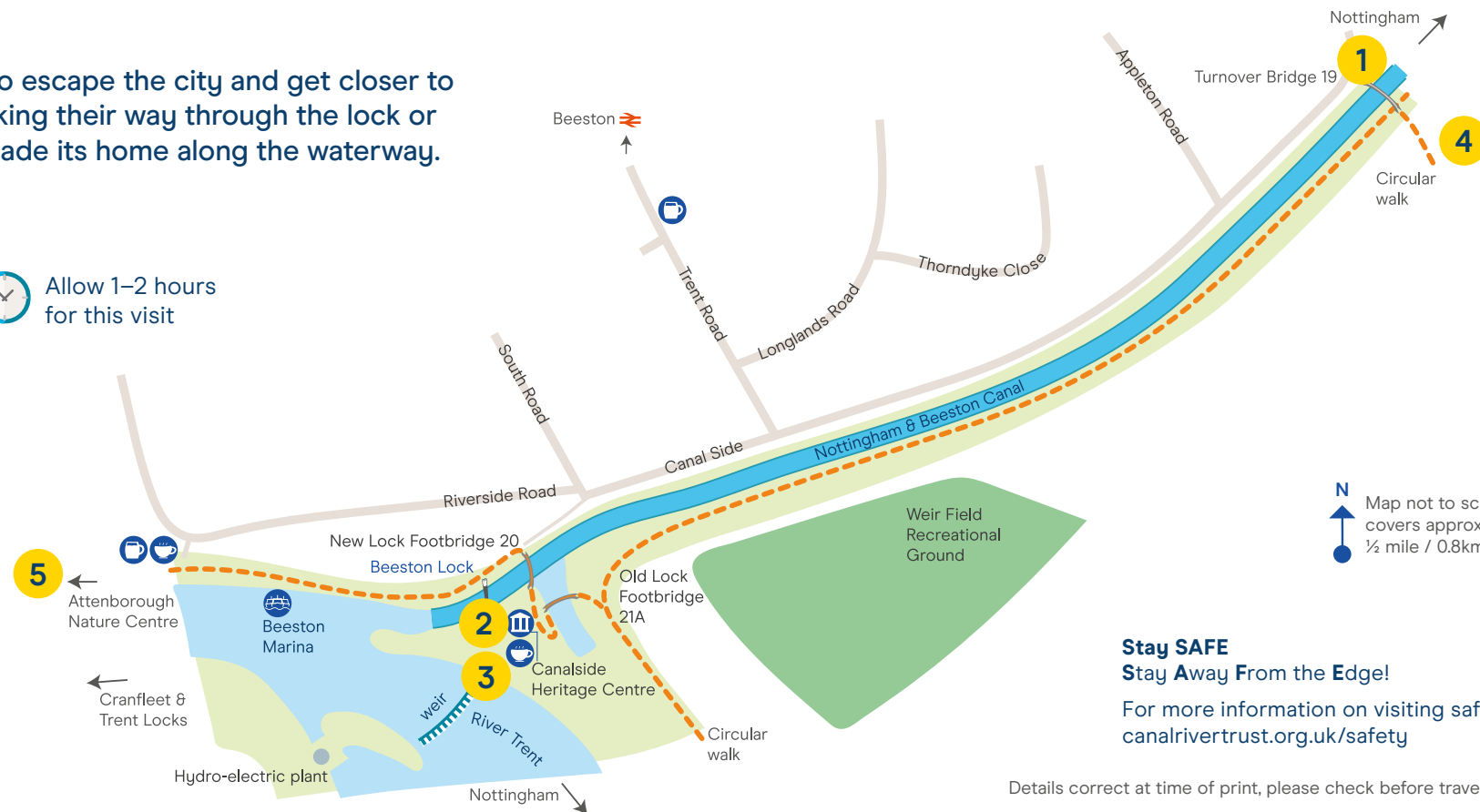
Beeston Lock is a great place to escape the city and get closer to nature. Watch boats gently making their way through the lock or discover the wildlife that has made its home along the waterway.

Visit us at:
Riverside Road, Beeston,
Nottingham NG9 1NR

 Allow 1–2 hours
for this visit

Find your way around

-  towpath
-  café
-  pub
-  museum
-  marina
-  railway station



Stay SAFE
Stay Away From the Edge!

For more information on visiting safely:
canalrivertrust.org.uk/safety

Details correct at time of print, please check before travelling.

5 things to do at Beeston Lock

- 1** **Walk** up to the Turnover Bridge, designed so horses could cross without being unhitched.
- 2** **Find** out more about the Nottingham & Beeston Canal at the Canalside Heritage Centre, housed in the old converted lock cottages.
- 3** **Pause** for a coffee at the boathouse café overlooking the marina and enjoy spending some time by water.
- 4** **Walk** the 2 mile (3km) circular route following the canal and the River Trent – part of Nottingham’s Big Track for walkers and cyclists.
- 5** **Explore** Attenborough Nature Reserve, a nationally important site – over 250 species of bird have been recorded here (1 mile/1.5km).

Did you know?

Beeston Weir and Power Station was built in 1999. The hydro-electric plant uses river flow to generate enough electricity for 2,000 homes.

