

## Caring for the Chesterfield Canal

We're the charity working to protect and bring to life this 250-year-old network of canals and rivers spanning England and Wales. Not so long ago many canals were abandoned, and some lost forever. Today, with your support, wildlife is recovering, history is alive, boats are plentiful and spending time in this environment is contributing to our health and happiness.

Our mission is to keep this extraordinary network of canals and rivers alive, teeming with wildlife, transforming places they run through and enriching all of our lives. Your support today could help us care for the Chesterfield Canal and many more places, for today and generations to come.



DONATE



Please support our work & donate today

SCAN ME



Canal & River Trust

Making life better by water

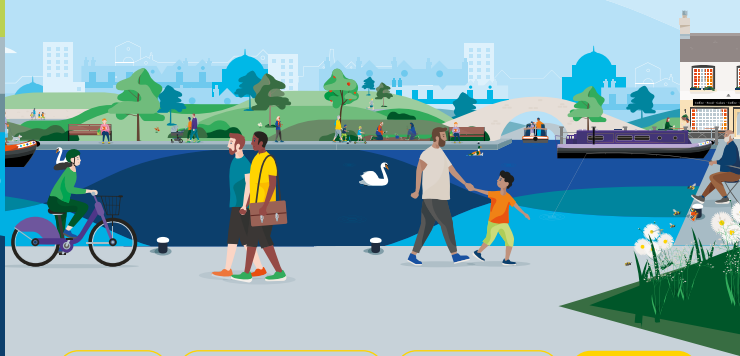
### Keeping history alive

The 46-mile (74km) long Chesterfield Canal opened in 1777. It was one of the last canals designed by James Brindley, who died while it was being constructed.

The canal links the River Trent at West Stockwith in Nottinghamshire with Chesterfield in Derbyshire.

The canal is also known as 'Cuckoo Dyke' after the cargo boats called 'cuckoos' that used to work on this waterway.

Discover lots of fun things to do with the family by and on the water. Go to [canalrivertrust.org.uk/explorers](https://canalrivertrust.org.uk/explorers)



Enjoy

Take Action

Volunteer

Donate

[canalrivertrust.org.uk](https://canalrivertrust.org.uk)

Registered charity no. 1146792

March 2024



Canal & River Trust

## Welcome to Turnerwood

The 'giant's staircase' of locks.



We're the charity making life better by water

The task of protecting the finest examples of working industrial heritage including the Chesterfield Canal., and the wildlife that calls it home, is growing all the time. As a charity we need you by our side more than ever. Please support our work today.

Registered with



FUNDRAISING  
REGULATOR

One of the most attractive spots on the Chesterfield Canal, at Turnerwood you can experience 22 locks in a little over a mile including treble and double 'staircase locks'.



### Find your way around

- towpath
- aqueduct
- café
- food & drink
- marina
- trip boat
- railway station

**Visit us at:**  
Turnerwood,  
Thorpe Salvin,  
Worksop S80 3LA

Allow 1–2 hours for this visit



**Stay SAFE**  
**Stay Away From the Edge!**

For more information on visiting safely:  
[canalrivertrust.org.uk/safety](http://canalrivertrust.org.uk/safety)

Details correct at time of print, please check before travelling.

## 5 things to do at Turnerwood

- 1** **Watch** the canal boats navigate the locks.
- 2** **Take** a boat trip with the Chesterfield Canal Trust from Shireoaks and experience the canal on the water.
- 3** **Go** fishing, it's some of the best fishing in the country.
- 4** **Enjoy** a coffee or ice cream from a nearby cafe and feel the benefit of being by water.
- 5** **Take** a walk along the towpath now a long-distance footpath and cycle route known as the 'Cuckoo Way'.

### Did you know?

When it opened in 1775, the 2.6km/1.6 miles Norwood Tunnel was the longest canal tunnel in Britain. The tunnel collapsed in 1907 and has been closed ever since.

