



Restoring Toddbrook Reservoir

Consultation Summary Note

November 2020

The proposal

The Canal & River Trust (the Trust) is currently working on a major project to restore Toddbrook Reservoir after the dam auxiliary spillway was damaged in August 2019. The restoration work will include a solution that replaces the existing overflow system, increases drawdown capacity, evaluates dam stability and addresses other recommendations made to improve reservoir safety following the 2019 incident.

This project will also consider enhancements that can benefit the community and the environment. This update note provides a high-level summary of the consultation and feedback received during the option assessment stage for the permanent repair of Toddbrook Reservoir.



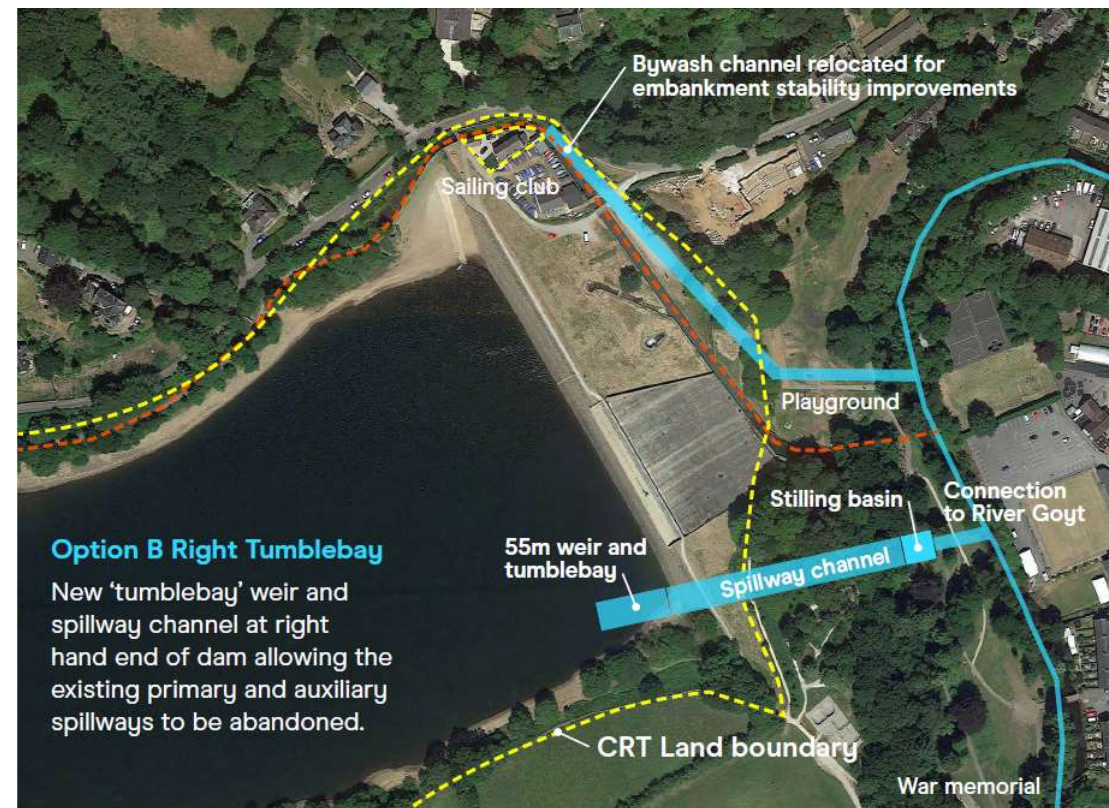
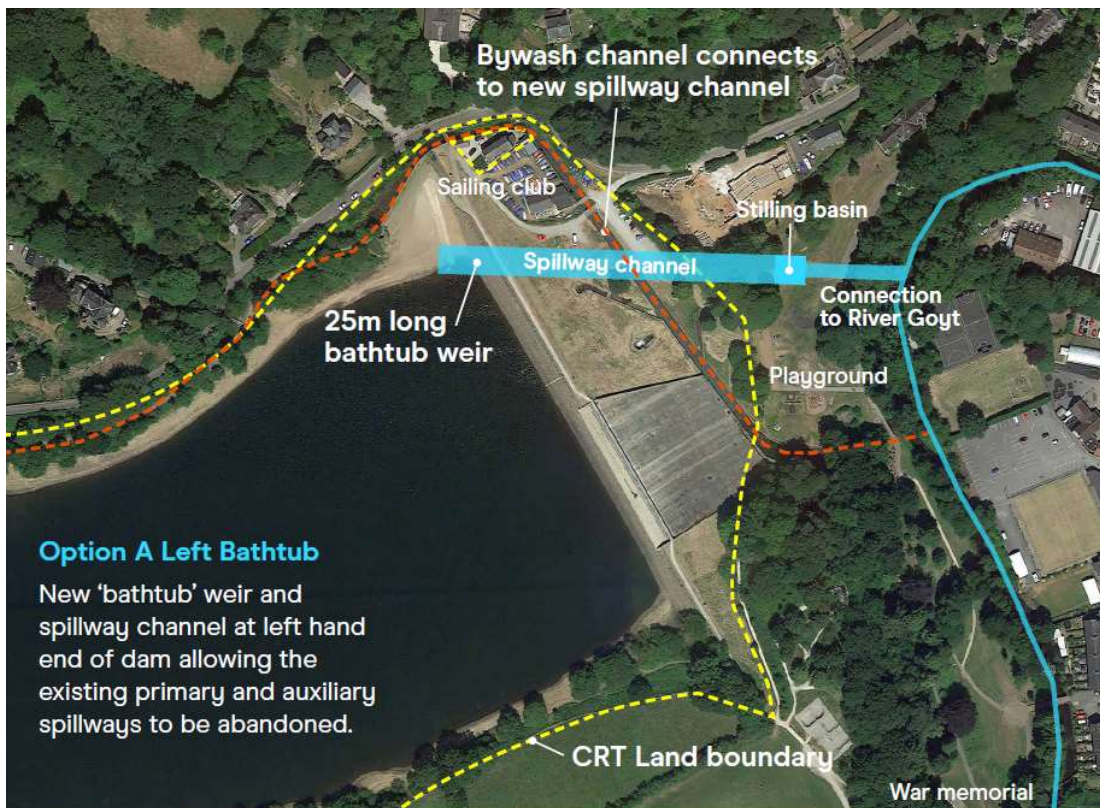
This update note provides a high-level summary of the data received at the consultation and highlights the next steps for the project.



The proposal

The recently held consultation asked for the public's views on the two preferred shortlisted options for the permanent restoration of Toddbrook Reservoir. Both involve the creation of new overflow spillway channels from the reservoir into the River Goyt. Under either option, the existing bank of concrete panels on the current auxiliary spillway will be removed and replaced with a grassed slope. The smaller original primary spillway near the Sailing Club will also be de-commissioned.

The two shortlisted options are presented here.



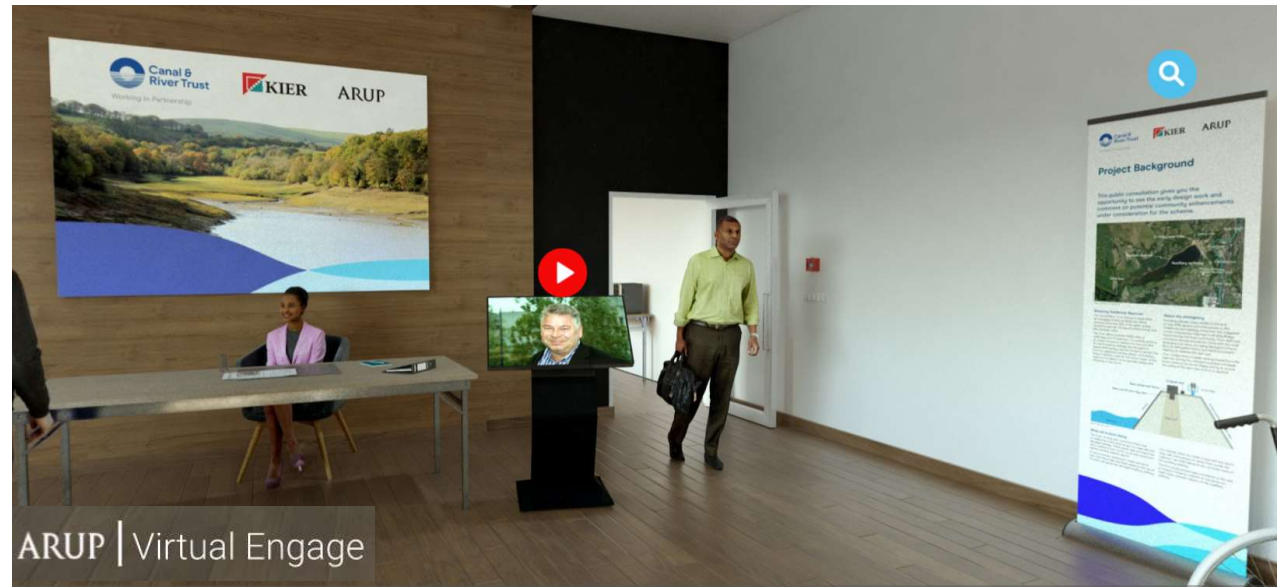
Restoring Toddbrook Reservoir

Canal & River Trust

Consultation undertaken

The overarching aim of this consultation was to ensure that stakeholders and the public were engaged at a formative stage of the design where sufficient information was available and that they had the opportunity to be actively involved.

It also aimed to raise awareness of the project among the local community.



During September 2020, we held the first round of public consultation to share our proposals and capture important feedback from stakeholders and the local community. Due to restrictions around coronavirus, the consultation was primarily held virtually, using Arup's Virtual Engage tool, with two face-to-face (socially distanced) events held on Friday 18 September and Saturday 19 September. Approximately 150 people visited the two events to view the proposals and talk to the project team.

The Trust promoted the consultation through the Whaley Bridge residents' newsletter, stakeholder notifications, a press release and social media.

We received a total of 234 online responses, 88 hard copy feedback forms and three responses by email.

Consultation Feedback: High-level Themes

From the feedback analysis, several key messages were highlighted for the project team to consider and explore further. These included:

- Overall, respondents had a stronger preference for Option A based on feedback received from Questions 1 and 2. Frequently raised reasons that were provided for supporting Option A included: less impact on woodland; less environmental impacts; less impact on the Memorial Park and community recreational facilities; and a lower perceived risk of flooding.
- Reasons respondents supported Option B included: less impact on the sailing club and community access to Toddbrook Reservoir; lower perceived impact on neighbouring residential properties; less visual impacts and greater potential for environmental enhancements.
- General comments about supporting the option with the least environmental impact.
- Request to minimise the disruption potentially caused to existing community facilities by the design and during construction.
- In response to Question 4 of the feedback form, a preference for keeping the spillway channel open through the parkland. Generally, respondents supported a spillway design which is in keeping with the surrounding natural environment.
- For the footbridge across Todd Brook, there was support for providing information boards on environmental features, the local reservoir and canal history, and the story of the 2019 incident; there was weaker support for information boards on the heritage of Whaley Bridge, and art provided by school children.
- In terms of community enhancements, there was stronger support for a circular walking route, improved footpath surfaces, a woodland walk, tree and flower planting; there was weaker support for information boards, and screening of sensitive views.
- Suggestions for community uses and access to the reservoir, particularly for swimming.
- Suggestions by respondents to consider safety and maintenance as the priority in decision making.

Feedback High-Level Analysis

The following section presents high-level analysis undertaken on consultation feedback received from 9 September through 30 September 2020. We are continuing to consider the feedback received through consultation, alongside technical and environmental information, to inform our ongoing work to develop a preferred option for restoring the reservoir.

Question 3: What are your reasons for support?

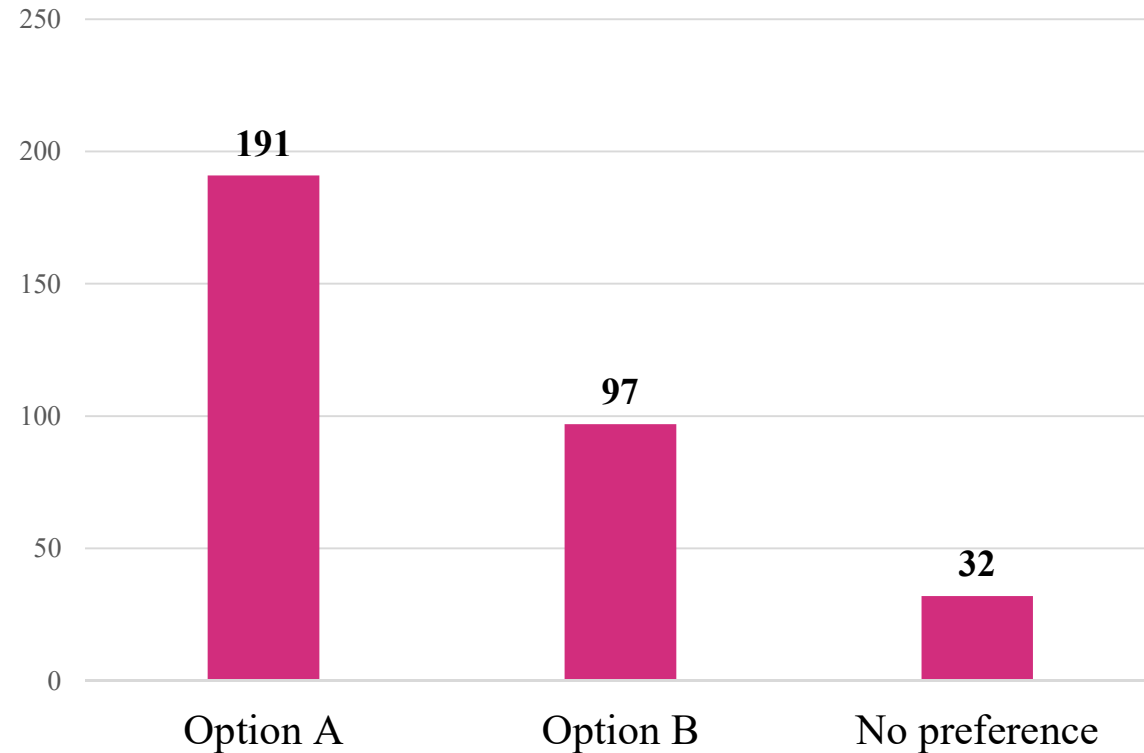
Option A

- Limited to no loss of woodland
- Less impact on community facilities and recreational activities
- Less environmental/ biodiversity impact
- Less disruptive overall
- Less impact on war memorial
- Support new water feature/ new feature in park

Option B

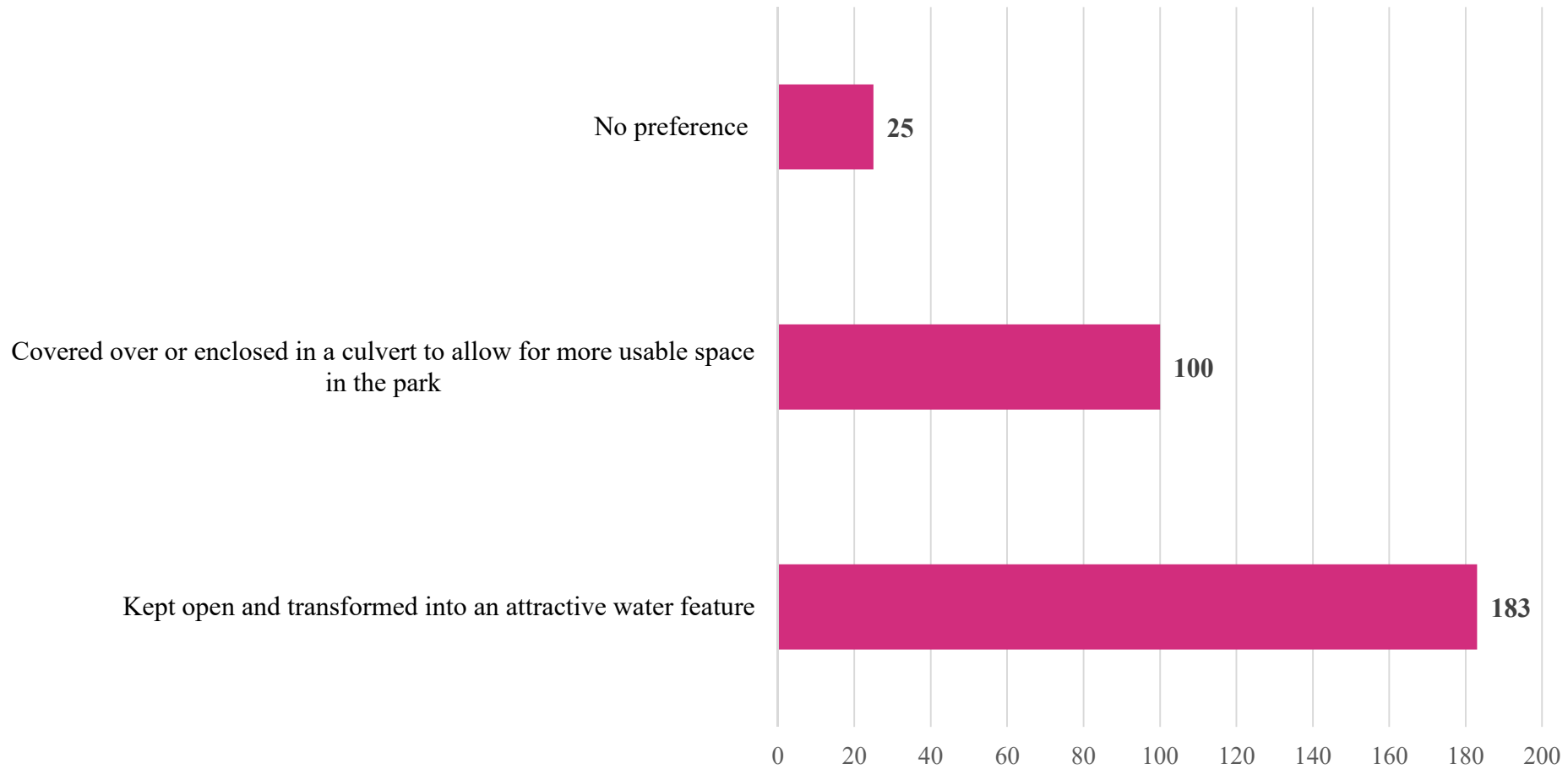
- Less impact on sailing club
- Less impact on community facilities
- Lower perceived impact on residential properties nearby
- Support new water feature/ new feature in park

Option Preference



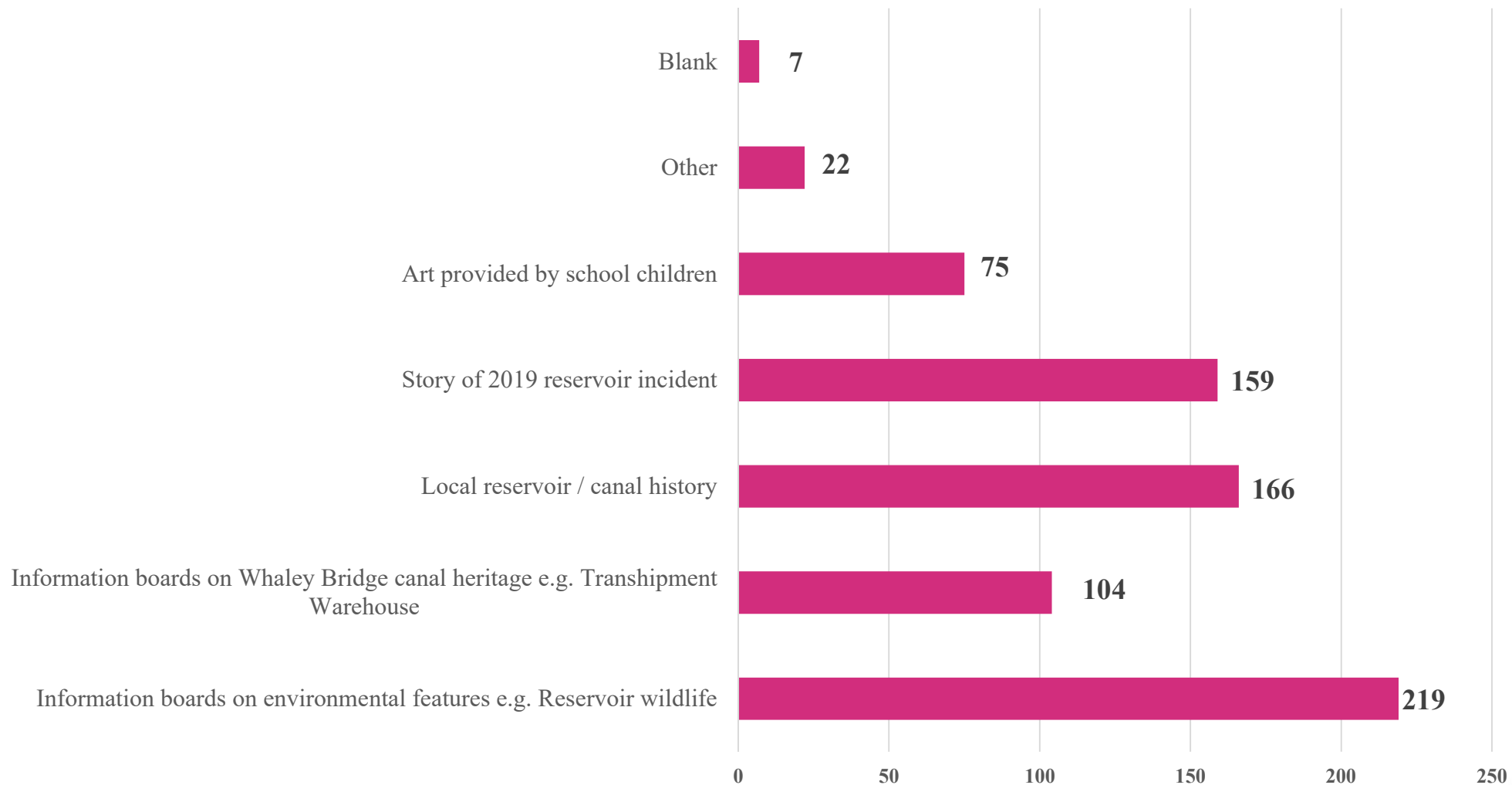
Question 4

In both Option A and Option B, the new spillway will travel through parkland before it joins the river Goyt. Would you like to see the channel:



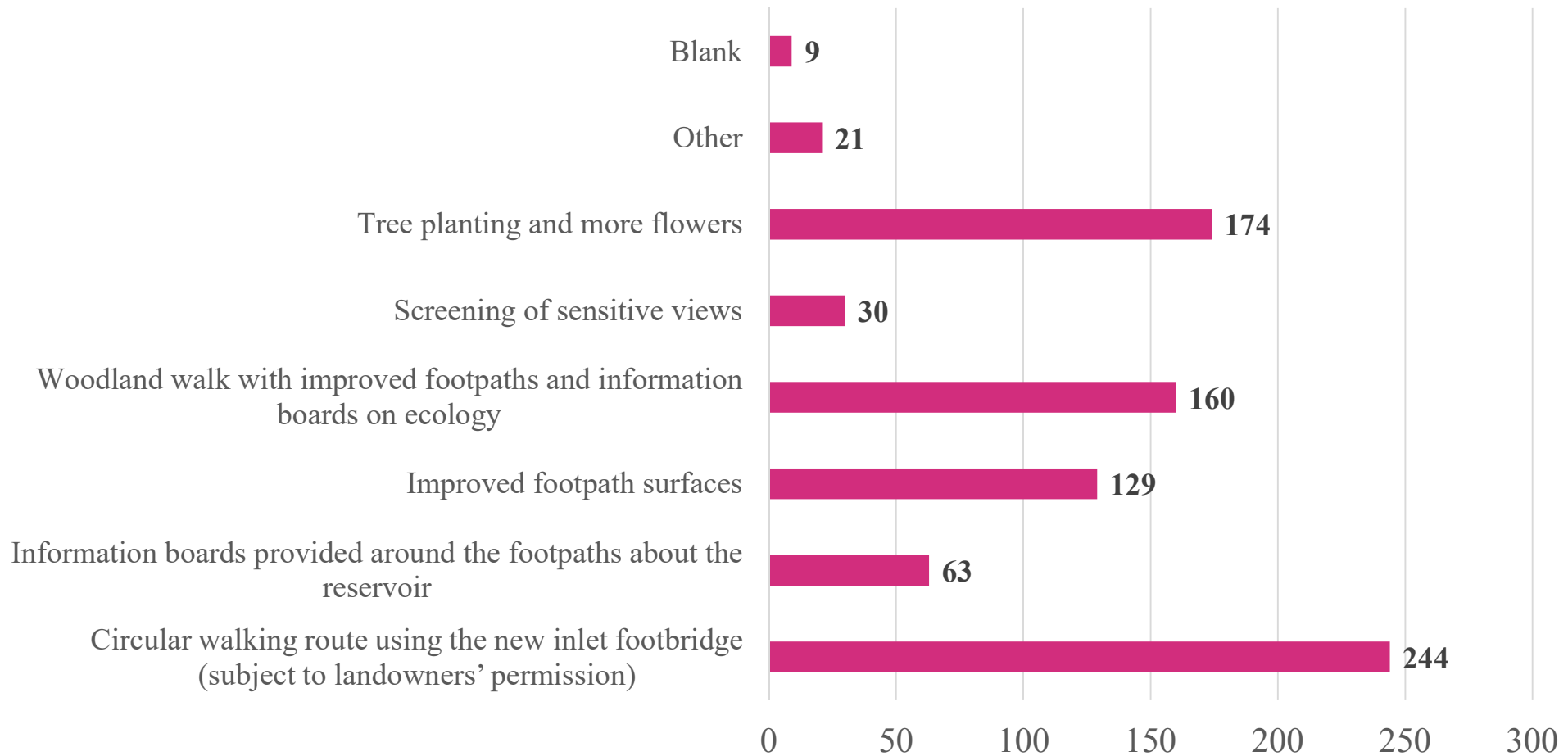
Question 5

A new footbridge is to be created across Todd Brook at the inlet where it joins the reservoir. What artistic interpretation would you like to see included as part of the inlet bridge? (Please tick up to three options)



Question 6

What other community enhancements would you like to see? (Please tick up to three options)



Question 7: Any additional comments.

Theme	Frequency of theme raised
Supports open water swimming and community activities	17
Minimise disruption to park	15
Support for option with least environmental damage/ environmental enhancements	14
Would like to be able to comment on other options not presented	14
More detail required to make an informed opinion	14
Support for green energy projects e.g. hydroelectricity	13
Support for maintaining and enhancing wildlife, biodiversity and woodland	12
Support circular walk	10
Safety should be a priority in the design	9
Mitigation for sailing club/ minimise impacts on sailing club	7
Maintenance of reservoir should be a priority	7
Suggests reinstating original spillway	6

Restoring Toddbrook Reservoir

Canal & River Trust

Next steps

Work is ongoing to inform the design and development process that will identify a preferred option to be developed for detailed design.

The assessment of the options includes the themes identified during this initial consultation, together with engineering, environmental and economic considerations to select the preferred option.

We have carefully considered all feedback received, and where possible, we are exploring ways of taking the themes into account as we develop the design and assessment of the scheme.

A further round of consultation on the preferred option will take place in early 2021, where we will demonstrate how we're responding to feedback. Where it hasn't been possible to incorporate your suggestions, we will seek to explain why.

For more information, please visit:
canalrivertrust.org.uk/restoring-toddbrookreservoir

