

Caring for Trent Lock

We're the charity working to protect and bring to life this 250-year-old network of canals and rivers spanning England and Wales. Not so long ago many canals were abandoned, and some lost forever. Today, with your support, wildlife is recovering, history is alive, boats are plentiful and spending time in this environment is contributing to our health and happiness.

Our mission is to keep this extraordinary network of canals and rivers alive, teeming with wildlife, transforming places they run through and enriching all of our lives. Your support today could help us care for Trent Lock and many more places, for today and generations to come.



DONATE



Please support our work & donate today

SCAN ME



Canal & River Trust

Making life better by water

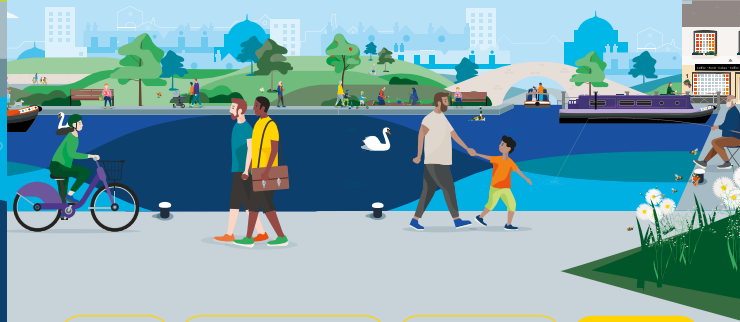
Keeping history alive

Trent Lock is a major canal navigation junction with four rivers and canals meeting – the River Soar, Erewash Canal, Trent & Mersey Canal and 'upper' River Trent.

Before the railways were built, ships sailed inland as far as Shardlow. Trent Lock became known as 'Waters Meet' by boaters and ships and shallow-bottomed barges, called ketches, would pass through the lock.

Today it is a beautiful spot to get closer to nature, try your hand at fishing, or simply watch narrowboats gently making their way along the canal.

Discover lots of fun things to do with the family by and on the water. Go to canalrivertrust.org.uk/explorers



Enjoy

Take Action

Volunteer

Donate

canalrivertrust.org.uk

Registered charity no. 1146792

March 2024



Canal & River Trust

Welcome to Trent Lock

A haven for wildlife.



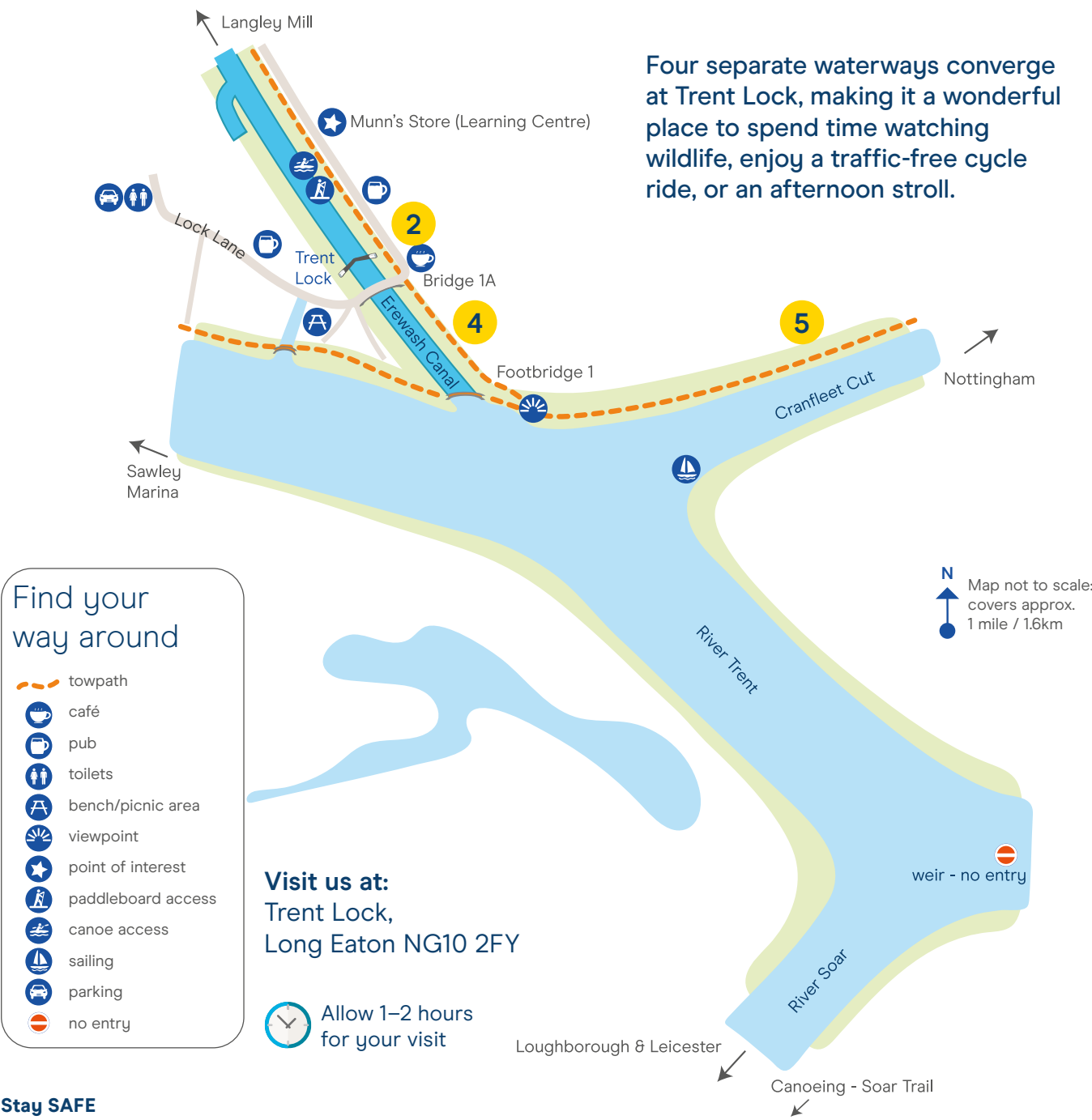
We're the charity making life better by water

The task of protecting the finest examples of working industrial heritage including Trent Lock, and the wildlife that calls it home, is growing all the time. As a charity we need you by our side more than ever. Please support our work today

Registered with



FUNDRAISING
REGULATOR



5 things to do at Trent Lock

- 1 Pause** to enjoy the wildlife that can be found along the waterway including coots, mute swans, moorhens, herons, kingfishers and mallard.
- 2 Spend** a moment or two watching the boats travelling through the lock.
- 3 Visit** our Welcome Station and chat with our friendly volunteers who will tell you more about how we are caring for the site.
- 4 Enjoy** a traffic-free bike ride along a designated cycle track by the Erewash Canal.
- 5 Walk** to the Cranfleet Cut – it was built so boats didn't have to navigate a short stretch of the River Trent.

Did you know?

As well as being the meeting point of four waterways, Trent Lock is also the point where three counties meet – Derbyshire, Leicestershire and Nottinghamshire.

Stay SAFE
Stay Away From the Edge!

For more information on visiting safely:
canalrivertrust.org.uk/safety

Details correct at time of print, please check before travelling.