

Caring for Woodlesford Lock

We're the charity working to protect and bring to life this 250-year-old network of canals and rivers spanning England and Wales. Not so long ago many canals were abandoned, and some lost forever. Today, with your support, wildlife is recovering, history is alive, boats are plentiful and spending time in this environment is contributing to our health and happiness.

Our mission is to keep this extraordinary network of canals and rivers alive, teeming with wildlife, transforming places they run through and enriching all of our lives. Your support today could help us care for Woodlesford Lock and many more places, for today and generations to come.



DONATE



Please support our work & donate today

SCAN ME



Canal & River Trust

Making life better by water

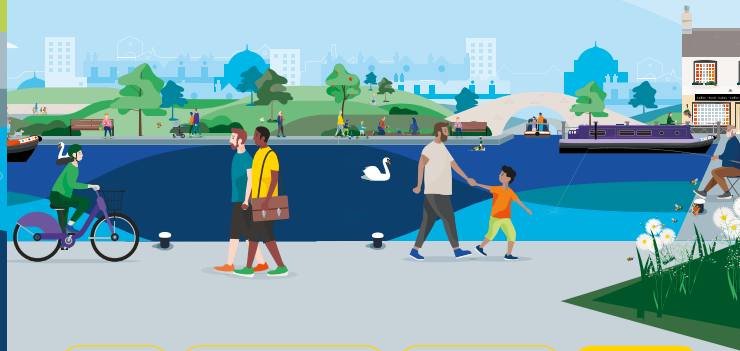
Keeping history alive

The Aire & Calder Navigation connects the River Aire, which flows through Leeds, with the River Calder. Its construction enabled boats to travel from the South Yorkshire collieries to the port of Goole.

The navigation was a huge success, allowing coal, wool and textiles to be transported easily and quickly around the region. This new transport route also enabled new industries such as glassmaking and pottery to thrive.

The Aire & Calder Navigation is one of the few inland waterways that still carries commercial traffic today.

Discover lots of fun things to do with the family by and on the water. Go to canalrivertrust.org.uk/explorers



Enjoy

Take Action

Volunteer

Donate

canalrivertrust.org.uk

Registered charity no. 1146792

March 2024



Canal & River Trust

Welcome to Woodlesford Lock

Escape the city and get close to nature.



We're the charity making life better by water

The task of protecting the finest examples of working industrial heritage including Woodlesford Lock, and the wildlife that calls it home, is growing all the time. As a charity we need you by our side more than ever. Please support our work today.


Registered with



FUNDRAISING REGULATOR

Just five miles from Leeds, Woodlesford Lock on the Aire & Calder Navigation is one of the best places to escape the city and enjoy country walks.

Visit us at:
Woodlesford Lock,
Woodlesford, West Yorkshire,
LS26 8PU

 Allow 1–2 hours
for your visit

Find your way around

- | | |
|--|---|
|  towpath |  nature reserve |
|  café |  parking |
|  pub |  railway station |
|  bench/picnic area | |

Stay SAFE
Stay Away From the Edge!

For more information on visiting safely:
canalrivertrust.org.uk/safety

Details correct at time of print, please check before travelling.



5 things to do at Woodlesford Lock

- 1** Visit Thwaite Mills, one of the last remaining water-powered mills in Britain.
- 2** Wander along the towpath and watch boats and barges as they make their way through the locks.
- 3** Discover the wildlife at St Aidan's Nature Reserve (1 mile/1.5km).
- 4** Enjoy Fishponds Lock circular walk (1.75 miles/2.8km) or take in a stretch of the 62 mile-long Leeds Country Way.
- 5** Bring a picnic and enjoy spending time by water.

Did you know?

The tub boats (pictured here) used on the Aire & Calder Navigation were called Tom Puddings. Introduced in 1863 they could still be seen transporting coal along the waterway until 1985.

