

# Caring for the River Trent

We're the charity working to protect and bring to life this 250-year-old network of canals and rivers spanning England and Wales. Not so long ago many canals were abandoned, and some lost forever. Today, with your support, wildlife is recovering, history is alive, boats are plentiful and spending time in this environment is contributing to our health and happiness.

Our mission is to keep this extraordinary network of canals and rivers alive, teeming with wildlife, transforming places they run through and enriching all of our lives. Your support today could help us care for the River Trent and many more places, for today and generations to come.

**DONATE**



Please support our work & donate today

**SCAN ME**



The task of protecting the finest examples of working industrial heritage including the River Trent, and the wildlife that calls it home, is growing all the time. As a charity we need you by our side more than ever. Please support our work today



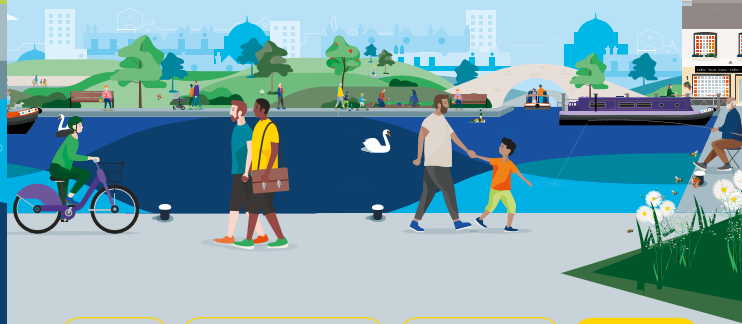
## Keeping history alive

While the River Trent has long been a vital commercial link between the Midlands and the Humber estuary, the opening of the Trent & Mersey Canal in 1770 increased pressure to improve the river for boats.

The first set of locks on the River Trent were built at Newark in 1773. Further locks below Nottingham and a towpath were made in the 1780s. By the 1800s it was one of the UK's most important trading rivers. Cargo such as wool, coal, grain and timber was unloaded into the wharves in the town and stored in the warehouses.

This industry took a heavy toll on the health of the waterway. After decades of pollution and neglect, the biodiversity of the river has been transformed and today it is home to over 30 species of fish including carp, chub and bream.

**Discover** lots of fun things to do with the family by and on the water. Go to [canalrivertrust.org.uk/explorers](https://canalrivertrust.org.uk/explorers)



- Enjoy
- Take Action
- Volunteer
- Donate

[canalrivertrust.org.uk](https://canalrivertrust.org.uk)

Registered charity no. 1146792

March 2024



# Welcome to Newark


From a busy port to a place to relax.







We're the charity making life better by water

Newark was once an important inland port on the mighty River Trent. Today, you can enjoy a day out exploring the old riverside buildings.

**Visit us at:**  
Tolney Lane,  
Newark NG24 1BZ

 Allow half a day  
for your visit

### Find your way around

-  towpath
-  café
-  pub
-  food & drink
-  toilets
-  bench/picnic area
-  play area
-  point of interest
-  trip boat
-  parking
-  railway station



**Stay SAFE**  
**Stay Away From the Edge!**

For more information on visiting safely:  
[canalrivertrust.org.uk/safety](http://canalrivertrust.org.uk/safety)

Details correct at time of print, please check before travelling.

## 5 things to do at Newark

- 1** **Walk** along the towpath to the locks, they were built to increase the depth of the river and accommodate bigger barges.
- 2** **Relax** with a stroll around the Town Lock park and sensory garden.
- 3** **Have** a coffee in the cafe and look out for the wildlife that now makes its home along the river.
- 4** **Follow** the Historic Riverside Trail (available from the Information Centre) and discover more about Newark's riverside.
- 5** **Visit** Newark Castle built nearly 1,000 years ago to defend the River Trent, an important trading route to the north.

### Did you know?

Unusually, the River Trent flows north. The source of the river is in Staffordshire, on the southern edge of Biddulph Moor. It flows through six counties before it joins the River Ouse to form the Humber at Trent Falls on the Yorkshire boundary.

