

Caring for the Kennet & Avon Canal

We're the charity working to protect and bring to life this 250-year-old network of canals and rivers spanning England and Wales. Not so long ago many canals were abandoned, and some lost forever. Today, with your support, wildlife is recovering, history is alive, boats are plentiful and spending time in this environment is contributing to our health and happiness.

Our mission is to keep this extraordinary network of canals and rivers alive, teeming with wildlife, transforming places they run through and enriching all of our lives. Your support today could help us care for Berkshire's canals and many more places, for today and generations to come.



DONATE



Please support our work & donate today

SCAN ME



Canal & River Trust

Making life better by water

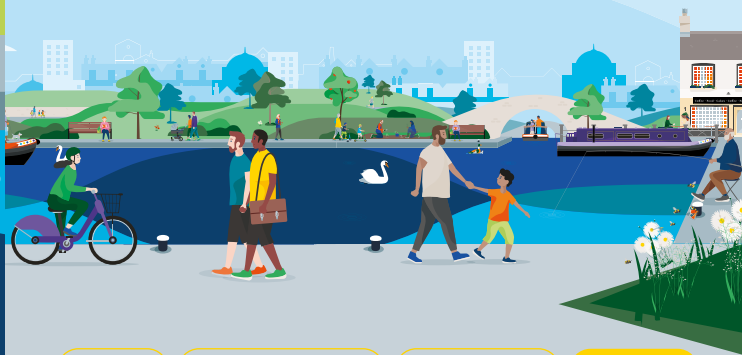
Keeping history alive

The Newbury to Hungerford section of the Kennet & Avon Canal was completed in 1798 and the full length of the waterway opened in 1810.

This new canal provided boats with a route from London to Bristol that avoided navigating the English Channel.

Each year hundreds of boats and barges would carry coal and other cargo between towns and cities along the waterway until the Great Western Railway opened in 1841 and the canal gradually fell into decline.

Discover lots of fun things to do with the family by and on the water. Go to canalrivertrust.org.uk/explorers



Enjoy

Take Action

Volunteer

Donate

canalrivertrust.org.uk

Registered charity no. 1146792

March 2024



Canal & River Trust

Welcome to Newbury Wharf

Connecting you with history and nature.



We're the charity making life better by water

The task of protecting the finest examples of working industrial heritage including Newbury Wharf, and the wildlife that calls it home, is growing all the time. As a charity we need you by our side more than ever. Please support our work today.


Registered with



FUNDRAISING REGULATOR

Once a busy inland port and trading area for the town, today the wharf connects the town with the countryside.

Visit us at:
Newbury Wharf,
Wharf Street,
Newbury RG14 5AP

 Allow 2–3 hours for this visit

Find your way around

- | | |
|--|---|
|  towpath |  play area |
|  café |  art centre |
|  pub |  museum |
|  food & drink |  trip boat |
|  toilets |  marina |
|  shopping |  parking |
|  bench/picnic area |  railway station |



Stay SAFE
Stay Away From the Edge!

For more information on visiting safely:
canalrivertrust.org.uk/safety

N
Map not to scale:
covers approx.
¾ mile / 1.2km

Details correct at time of print, please check before travelling.

5 things to do at Newbury Wharf

- 1 Enjoy** a boat trip along the canal and find out more about the waterway.
- 2 Relax** with a picnic in Victoria Park and feel the benefit of spending time by water.
- 3 Visit** the Kennet & Avon Centre in the Wharf and discover the history of the canal.
- 4 Stroll** along the towpath to Town Bridge, a bridge has crossed the river here since the Middle Ages.
- 5 Walk** or cycle along along the towpath to Berks, Bucks & Oxon Wildlife Trust's Thatcham Nature Discovery Centre (0.8 mile/1.2km).

Did you know?

Town Bridge was built before the canal so there is no towpath beneath it. Boaters used to float a line under the bridge, re-attach it to the horse where the towpath resumed and haul the barge through. Over time, the hauling lines wore grooves under the bridge and these can still be seen today.

