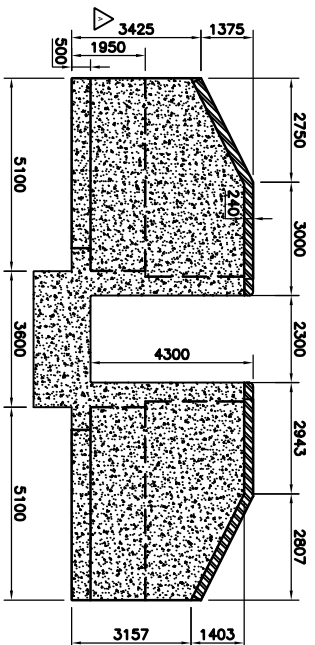
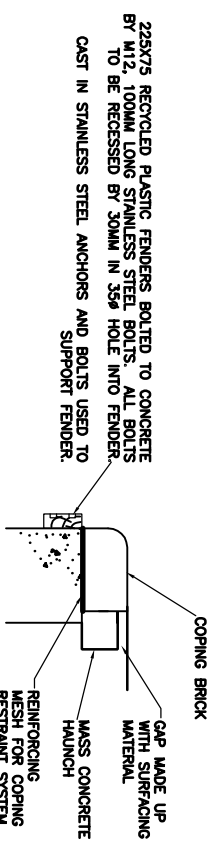


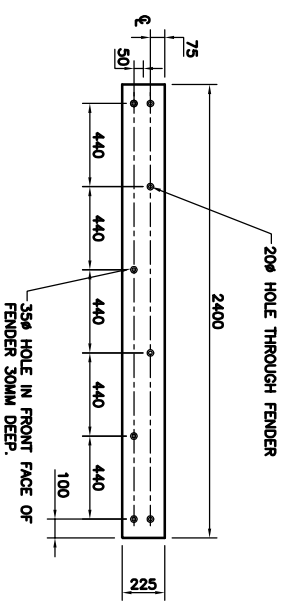
ELEVATION C-C
Scale 1:100



ELEVATION D-D
Scale 1:100



DETAIL 1 - SECTION ON FIXING DETAIL
FENDER DETAIL
Scale 1:20



DETAIL 1 - ELEVATION ON FENDER
FENDER DETAIL
Scale 1:20

440x150x230 BULLNOSE BRICKWORK COPING BY GRADLEY SPECIAL BRICK COMPANY LIMITED OR SIMILAR APPROVED. COPING SECURED BY MANUFACTURERS COPING RESTRAINT SYSTEM.

LANDSCAPING FILL FROM SELECTED AS DUG MATERIAL TO BE ADDED TO FINISHED SURFACE TO BE PROFILED WITH 1:40 FALL INTO LOCK

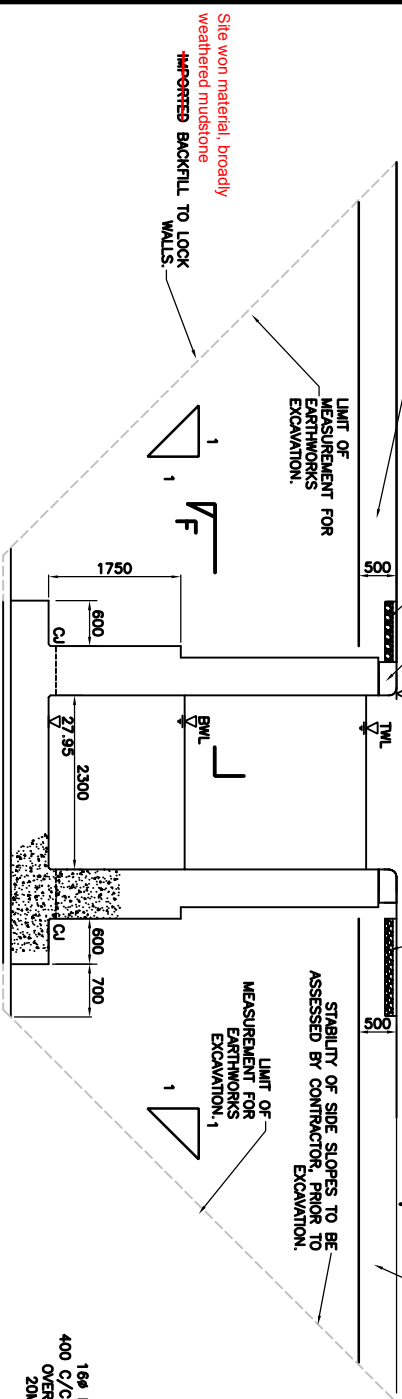
800 WIDE TOPPATH

1500 WIDE TOPPATH

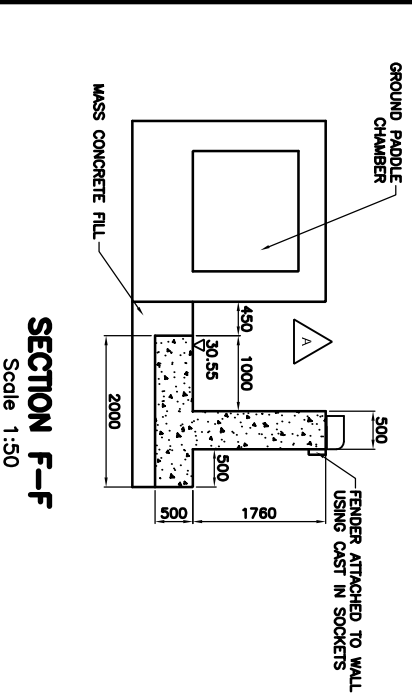
Site won material, broadly weathered mudstone

IMPROVED BACKFILL TO LOCK WALLS

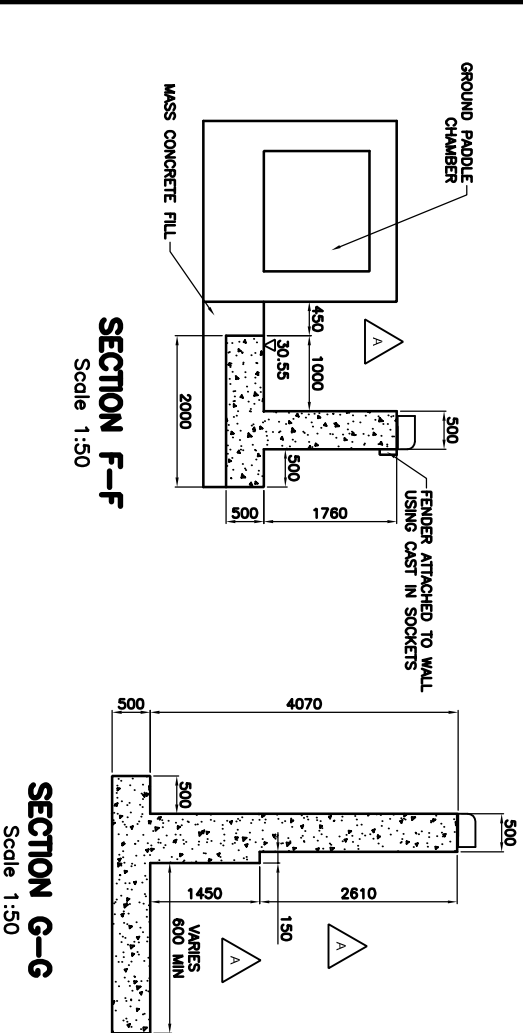
SECTION E-E
Scale 1:50



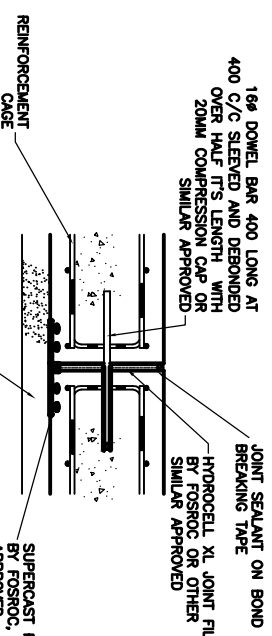
SECTION F-F
Scale 1:50



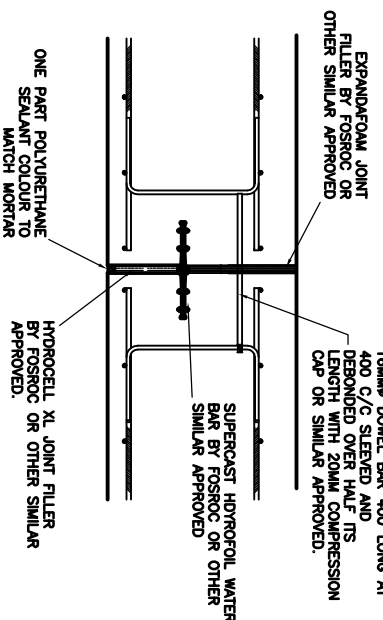
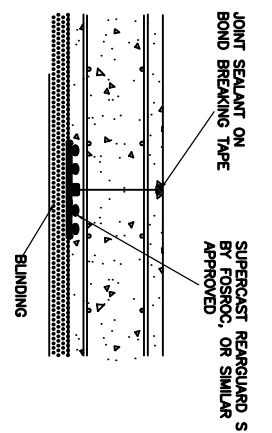
SECTION G-G
Scale 1:50



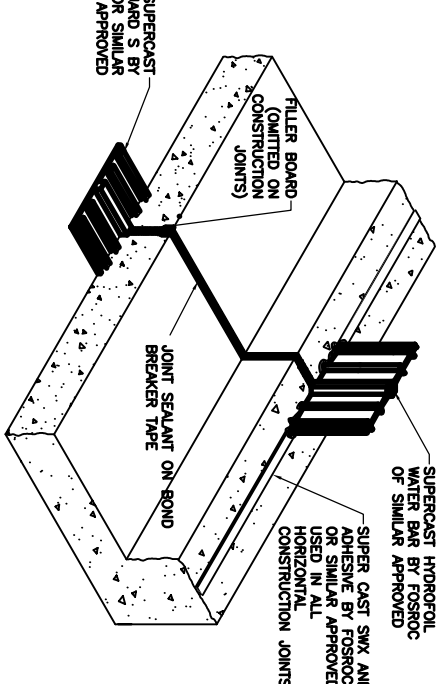
EXPANSION JOINT DETAIL IN BLINDING
NTS



LOCK FLOOR CONSTRUCTION JOINT DETAIL
NTS



JOINT DETAIL AT WALL STEM
FILLER BOARD AND GAP OMITTED ON CONSTRUCTION JOINTS.
NTS



TYPICAL JOINT DETAIL
NTS

- NOTES:**
1. Do not scale from this drawing.
 2. All dimensions are in millimetres unless otherwise shown.
 3. All levels are in metres and based on ordnance datum (Newlyn).
 4. Prior to construction all dimensions in the gate recesses shall be checked for compatibility by the gate designer.
 5. This drawing shall be read in conjunction with the following drawings:
 - WN/CBAG/040/041-047
 6. For setting out details refer to channel works drawings.
 7. All boltdrags, and other lock furniture to be provided by British Waterways.
 8. All concrete to be grade C40/50.
 9. Surface finish to be fair finish.
 10. Backfill to structures to comprise a material complying with a 2C classification to the specification for highway works. Refer to the works information for grading curve.
 11. All brickwork to be provided by British Waterways.

The maximum difference in backfill levels behind the walls on either side of the lock shall be 1 metre

AS-BUILT

Rev	By	Cr	AP	Date	Description
1	AW	AW	AW	9/7/8	ISSUE FOR CONSTRUCTION
2	AW	AW	AW	9/7/8	LEVEL OF STEP CHANGED TO 150MM
3	AW	AW	AW	9/7/8	ADJUSTMENT TO REINFORCING



Client's Office: **Waterways**
 100, Waterway Street, Fenny Stratford, Bucks, MK18 2ZG
 Tel: 01827 28200 Fax: 01827 288071

Design Office: **British Waterways**
 100, Waterway Street, Fenny Stratford, Bucks, MK18 2ZG
 Tel: 0121 456 2345 Fax: 0121 456 1549

Project: **DROITWICH CANAL RESTORATION JUNCTION CANAL**

Drawing: **LOCK 6 GENERAL ARRANGEMENT SHEET 2 OF 2**

Drawn by: PAV Date: 29/11/07
 Checked by: CJF Date: 9/7/8
 Authorised by: AFP Date: 9/7/8

Drawing No. **WN/CBAG/040/041** Revision **A**

Drawing Scale: AS SHOWN @ A1

CAD Filename: **Pol Scale: 1:1**