



Discover Windmill End (Bumble Hole)

Windmill End, once a hub of industrial activity, is now a peaceful nature reserve. Discovering clues to its smoky past makes a great family day out.



Little adventures on your doorstep



STAY SAFE:
Stay Away From the **E**dge

A little bit of history

Windmill End on the Dudley No2 Canal was once filled with factories, boat yards, coal mines and spoil heaps, kilns and furnaces, iron works, timber yards and saw mills. Now there is grassland, picnic spots, still pools, wild flowers and birdsong. Follow the paths and discover more about this area.



Best of all
it's FREE!*


Five things to do at Windmill End


- Watch** boats chug along the canal and disappear into the Netherton Tunnel!
- Explore** the Dudley No 2 arts trail.
- Follow** the paths and check out the quirky cast iron bridges.
- Walk** to Windmill End Pumping Station, known locally as Cobb's Engine House, that once pumped water out from local mines and into the canal. Today, it's a Grade II listed building.
- Go** for an evening walk and watch out for grey herons and bats.



Information

Windmill End
Darby End
Dudley DY2 9HS

 Parking


 Toilets

 Café

 Pub

 Picnic

 Path

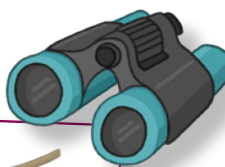
 Allow 1-2 hours
for this visit

* Don't forget:

Although the site is always open the facilities and boat trips may not be and some may be chargeable. Please check with local businesses before setting out.

What to Spot

Explore the waterside together.
How many of these can you spot?

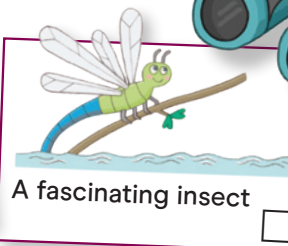


A duck quacking



166

The number of a
bridge or lock



A fascinating insect



An interesting
stone or brick



The names of
two boats



A face
or animal
in the
clouds



Go to canalriverexplorers.org.uk
to discover lots of fun things to
do with the family.



A big thank you to all the volunteers who helped produce these.