

# Restoring Toddbrook Reservoir

## Construction & Community Art Project Update



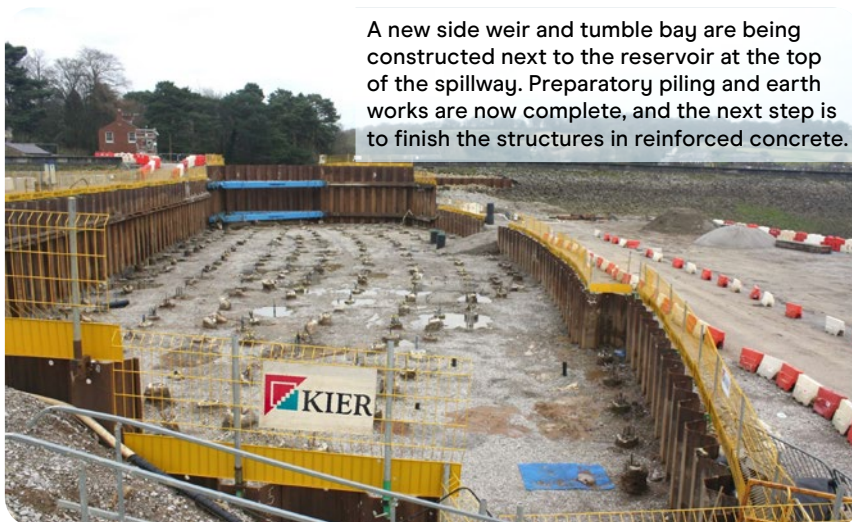
### Many thanks for your patience

Many thanks to everyone for their continuing patience with the construction project to create a new spillway structure at Toddbrook Reservoir, near Whaley Bridge.

Over the winter we have excavated the ground for a new spillway channel and tested all the new concrete piling.

Our contractors Kier now enter the next major construction phase, using reinforced concrete to create the new spillway structures.

Work will start in the lower site with the stilling basin, turrets and spillway chute and move upwards to build the tumble bay and side weir by the water's edge.



Once the main construction phase is complete, the two concrete turrets will be sandblasted with artwork created as part of a community art project by artist Tom Edwards (We are Culla). *See inside the newsletter for more details and a chance to give feedback.*

We are expecting the main reservoir restoration work to be finished by summer 2025. This will be followed by demobilisation of the construction site, building the new sailing club and extensive landscaping to return Toddbrook Reservoir and Memorial Park back to public use. We are now expecting a project end date around autumn 2025.

We recognise this is later than hoped for, as set out in our original anticipated construction programme. Prolonged wet weather and difficult ground conditions have both proved challenging. Thankfully future works are mainly above ground, so it may be possible to make up lost time.

We are expecting the reservoir to refill naturally over the winter of 2025/26 and then hopefully be available again for public sailing, angling and other recreational activities from spring 2026.

For regular construction updates, please go to the Canal & River Trust website:

[canalrivertrust.org.uk/restoring-toddbrook-reservoir](https://canalrivertrust.org.uk/restoring-toddbrook-reservoir)

**Thank you for  
your support.**



# Blending two stilling basin turrets into the landscape



Above: Artist Tom Edwards is leading a community art project on Toddbrook Reservoir in Whaley Bridge. He is pictured here on the construction site, in front of the site of the new turrets.



Artist Tom Edwards (We are Culla) is working with the Canal & River Trust, Kier and local residents to create attractive new artwork to cover two stilling basin turrets, at the base of the new Toddbrook Reservoir spillway.

The turrets play an essential role in controlling water volumes cascading down the spillway chute into the stilling basin and the Trust is keen to soften their visual impact on the Memorial Park.

Over the last few months, Tom has hosted a series of public events and workshops to investigate possible designs and concepts.

He explains: "My research has taken many forms, from reading about the history of the reservoir and Whaley Bridge, to exploring the many footpaths and talking directly to residents about their relationship with the reservoir and what they'd like to see.

"The final artwork will be sandblasted into the turrets. This involves firing high pressure particles of abrasive sand or grit at the smooth concrete to etch into the surface, exposing the rough aggregate and leaving a shallow depression in the surface.



Above left & right: Artist Tom Edwards seeks residents' views at a workshop event at the Whaley Bridge Transhipment Warehouse in December.



Right: Dodging the February showers, he invited local families to try out some of his designs by stencilling them onto the construction site hoardings in the Memorial Park.



"These exposed areas will have a slightly different colour and texture to the surrounding concrete, creating a stable and long-lasting design to be enjoyed for many decades to come."



# Early artwork designs

Tom has been inspired by a range of themes, including the local landscape, trees, wildlife, heritage, culture, sailing club, water sports and map contour lines. The designs are currently at an early stage of development and will also be influenced by forthcoming sandblast tests to gauge possible levels of artistic detail.

The turret artwork will be one of the final construction tasks in the project timetable, and likely to be installed in spring 2025.

Here are details from some of his concept designs below.



## We welcome your feedback

If you are interested to see the design options in more detail, check out the Canal & River Trust website: [canalrivertrust.org.uk/restoring-toddbrook-reservoir](https://canalrivertrust.org.uk/restoring-toddbrook-reservoir)

Or see information boards in the Transhipment Warehouse, Canal Basin, Whaley Bridge. A special open day is planned for Wednesday 24 April, 12-3pm.

We welcome your feedback and if you wish to make any comments or express preferences for particular designs, you can send your comments to Tom Edwards via email: [toddbrook@canalrivertrust.org.uk](mailto:toddbrook@canalrivertrust.org.uk). Please send responses by the end of April.

# Community Matters

## Keeping in Touch

Tess Smith is Kier's dedicated Whaley Bridge Stakeholder Manager, who is responsible for keeping residents informed and updated about progress on the Toddbrook construction project.

She is available to discuss progress and any issues at regular drop-in community hubs at the Transhipment Warehouse in the town's Canal Basin.

Tess sends out regular updates by email. If you have any specific construction queries or would like to join the email list, please get in touch with her at: [Toddbrook@kier.co.uk](mailto:Toddbrook@kier.co.uk) or Tel: 07731 987228.

Tess Smith



## Sandbag Replacement

Some of the original emergency sandbags from the incident in 2019 have now started to disintegrate. Please be assured we are aware of the problem and are in the process of replacing the bags with stronger, more environmentally-friendly hessian covers.

## Kier's Helping Hand for Hens

Kier staff were delighted to be 'eggstra' helpful and join in the national re-homing campaign 'Fresh Start for Hens'. A donation of construction fence panels enabled rescuers Helen McNabb and her niece Amy to save and rehome 119 local hens.



## Public Open Days

**Dates for your diary:**  
**Friday 19 and Saturday 20 July, 2024**

You are invited to join a tour of the construction site for a progress update with staff. Please book places in advance from the beginning of June on the Canal & River Trust website. For more information: [canalrivertrust.org.uk/restoring-toddbrook-reservoir](https://canalrivertrust.org.uk/restoring-toddbrook-reservoir)

You can also contact the Project Team with any comments or questions by email: [toddbrook@canalrivertrust.org.uk](mailto:toddbrook@canalrivertrust.org.uk)