

Grand Union Canal
Southall Towpath Improvements
Focus Sites – Summary of Survey & Stakeholder Responses
August 2021

84% of all survey respondents agreed with the VISION:



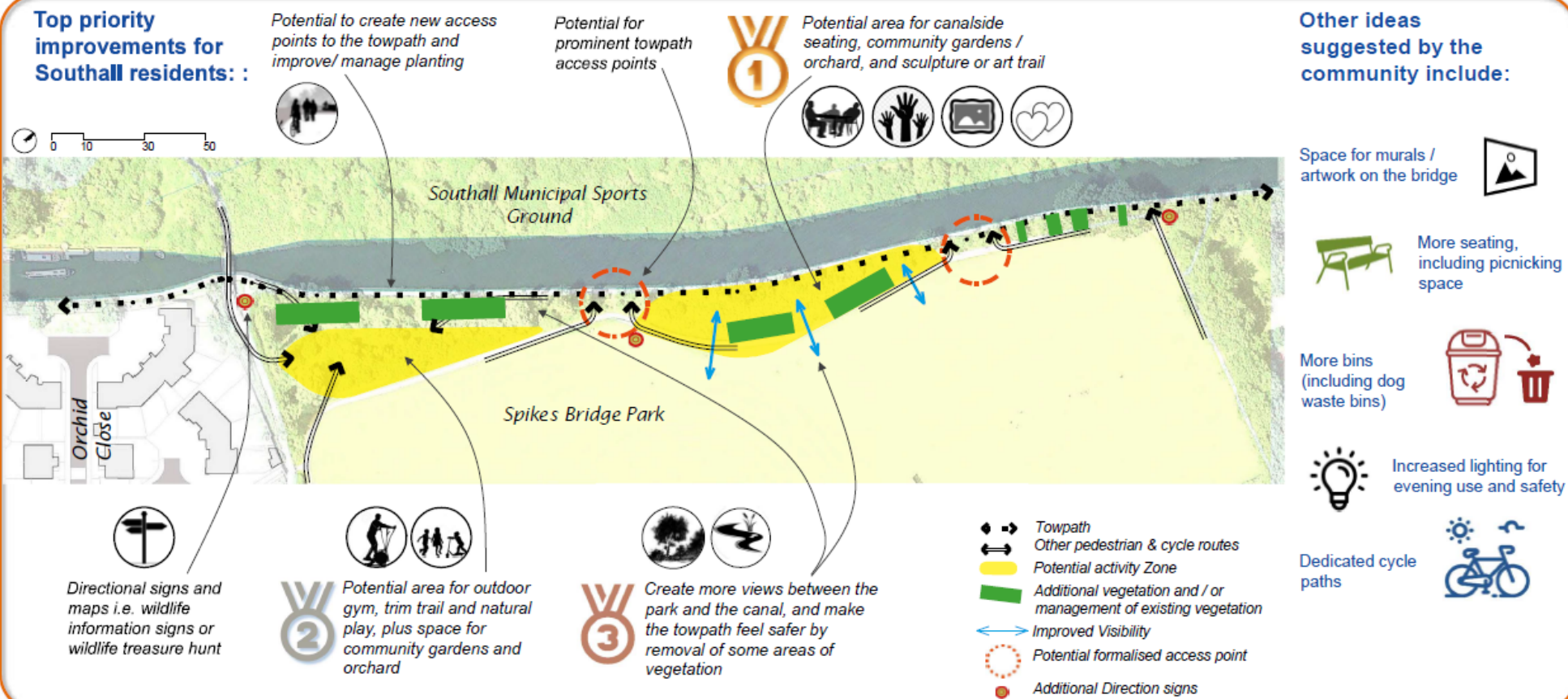
A park that has stronger visual and physical connections to the canal. A canalside that is used for exercise, community activities, and which has improved wildlife habitats and signage.

Key Response Themes:

- Support for improved accessibility and paths within the park.
- Concern about the balance between improving visibility and sight lines and removing habitat and vegetation.
- Calls for improved management of the space to address anti-social behaviour.

**You
said...**

**Top priority
improvements for
Southall residents: :**



76% of all survey respondents agree with the VISION:



An attractive, accessible, safe and well-used canalside that has a strong local identity and increased sense of community ownership. A space that is used by all for social gathering, onward movement and community activity.

Key Response Themes:

- Need to address litter, rodents and bird feeding issues.
- Concern that improvements might cause problems encouraging more drunken or drug taking behaviour.
- Develop long-term approach that initially deals with existing issues before re-evaluating opportunities for improvements.

You
said...

Update:

Following local feedback, the options for creating seating or bird feeding areas at Bankside will not be taken forward. Options for community activity and improvements will continue to be explored.

Top priority improvements for Southall residents:



Area for seating, bird feeding and community activity, alongside improvements to the existing access points and better definition and separation of the residents' parking from the canalside



Mooring site-potential for commercial/community boat



Thinning the existing vegetation to improve the sense of safety near the bridge, to enhance biodiversity and create areas for community managed growing space



Other ideas suggested by the community include:

Wildflower / biodiversity planting



Education of people about proper ways of feeding birds.

Signage in different languages



Mural painting

History & information boards



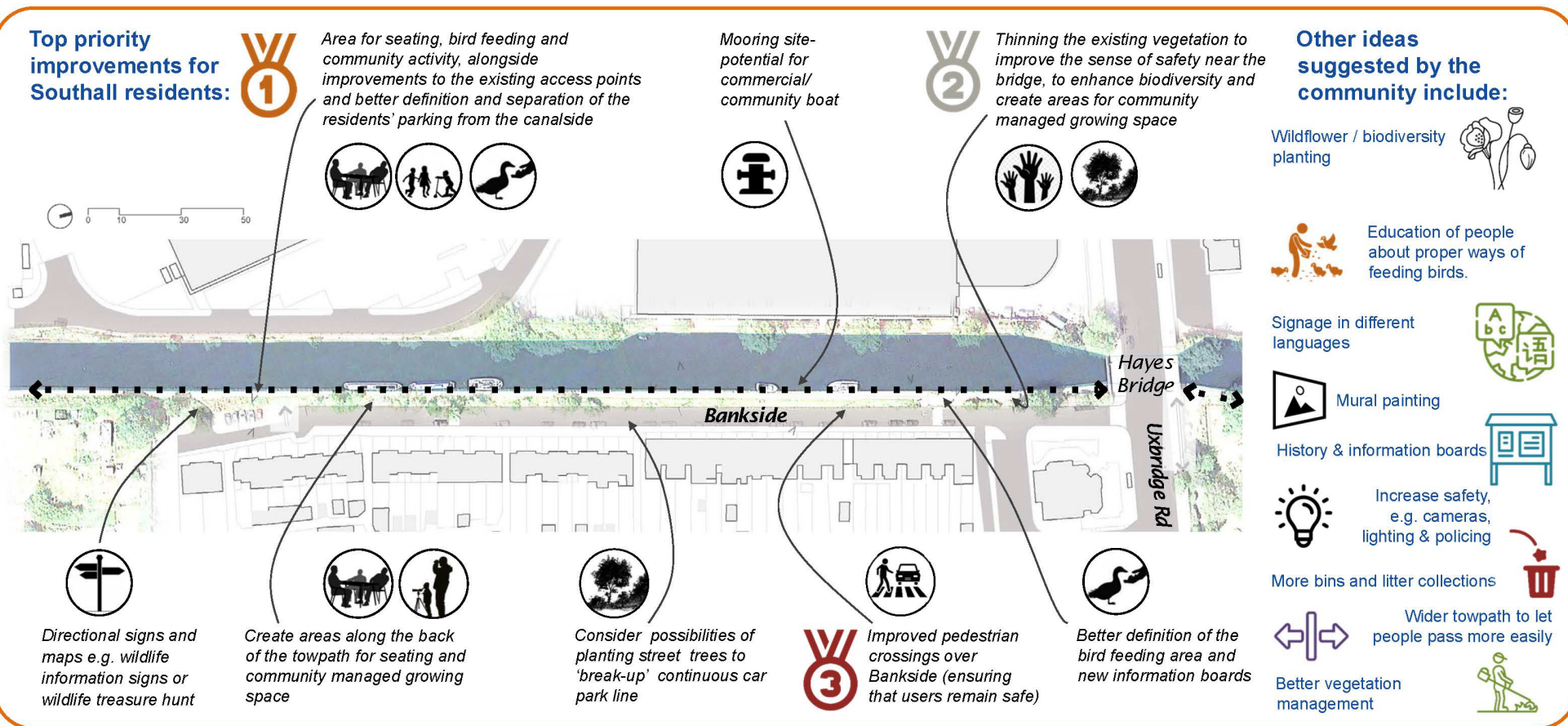
Increase safety, e.g. cameras, lighting & policing

More bins and litter collections



Wider towpath to let people pass more easily

Better vegetation management



84% of all survey respondents agreed with the VISION:



Connecting Southall Recreation Ground and the canal edge to one integral area with opportunities for views to, and interaction with the water, enhanced biodiversity, and more space for cyclists and pedestrians along the canal.

Key Response Themes:

- Improve the connections between the Recreation Ground & the canal.
- Create safe spaces for pedestrians and cyclists (potentially away from the towpath) to co-exist, without detrimental effect on surrounding roads.
- Develop a greater diversity of environments to improve wildlife, to enhance visual interest and to generate greater activity.

You said...

Top priority improvements for Southall residents:



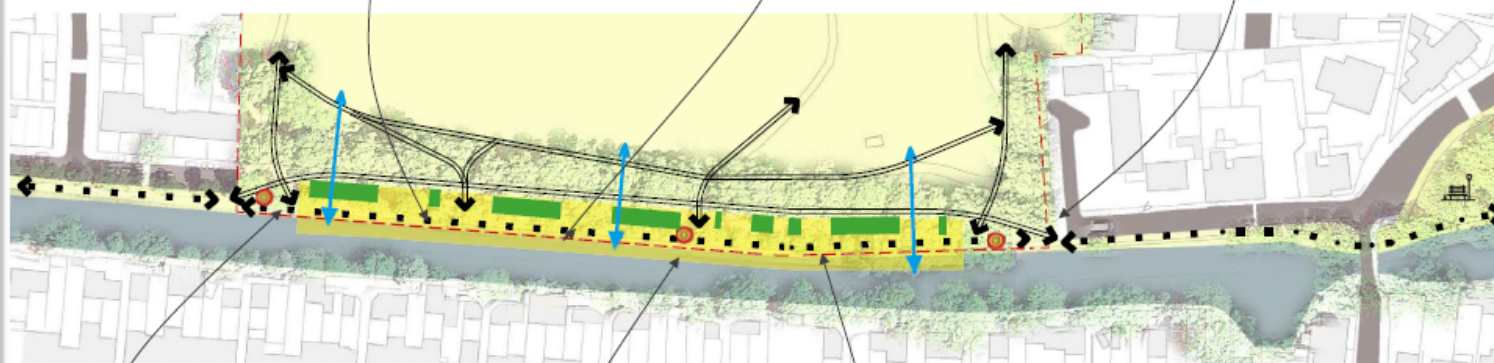
Waterfront promenade with space for improved interaction with the water, seating and community activity spaces.



Potential to divert cyclists away from the towpath to create a more pedestrian focused canalside



Potential reduction of road width to accommodate cycle lane



Feasibility study underway to explore possible towpath width and surface improvements and improvements to access points



Better directional signage and information boards at key points along towpath



Potential thinning of the existing vegetation to improve the sense of safety for users of the towpath, and to create a more naturalised canalside with enhanced biodiversity (such as wildflower strips, bird and bat boxes, bug hotels etc.)



- Towpath
- Other pedestrian and cycle routes
- Potential activity Zone
- Additional vegetation and / or management of existing vegetation
- Improved Visibility
- Potential formalised access point
- Additional Direction signs

Other ideas suggested by the community include:



Create more activity upon the water

Space for boat mooring



More seating

Information boards listing community events and local wildlife matters



Increase safety, e.g. cameras, lighting

More bins and litter collections



Cycle activity area

86% of all survey respondents agreed with the VISION:



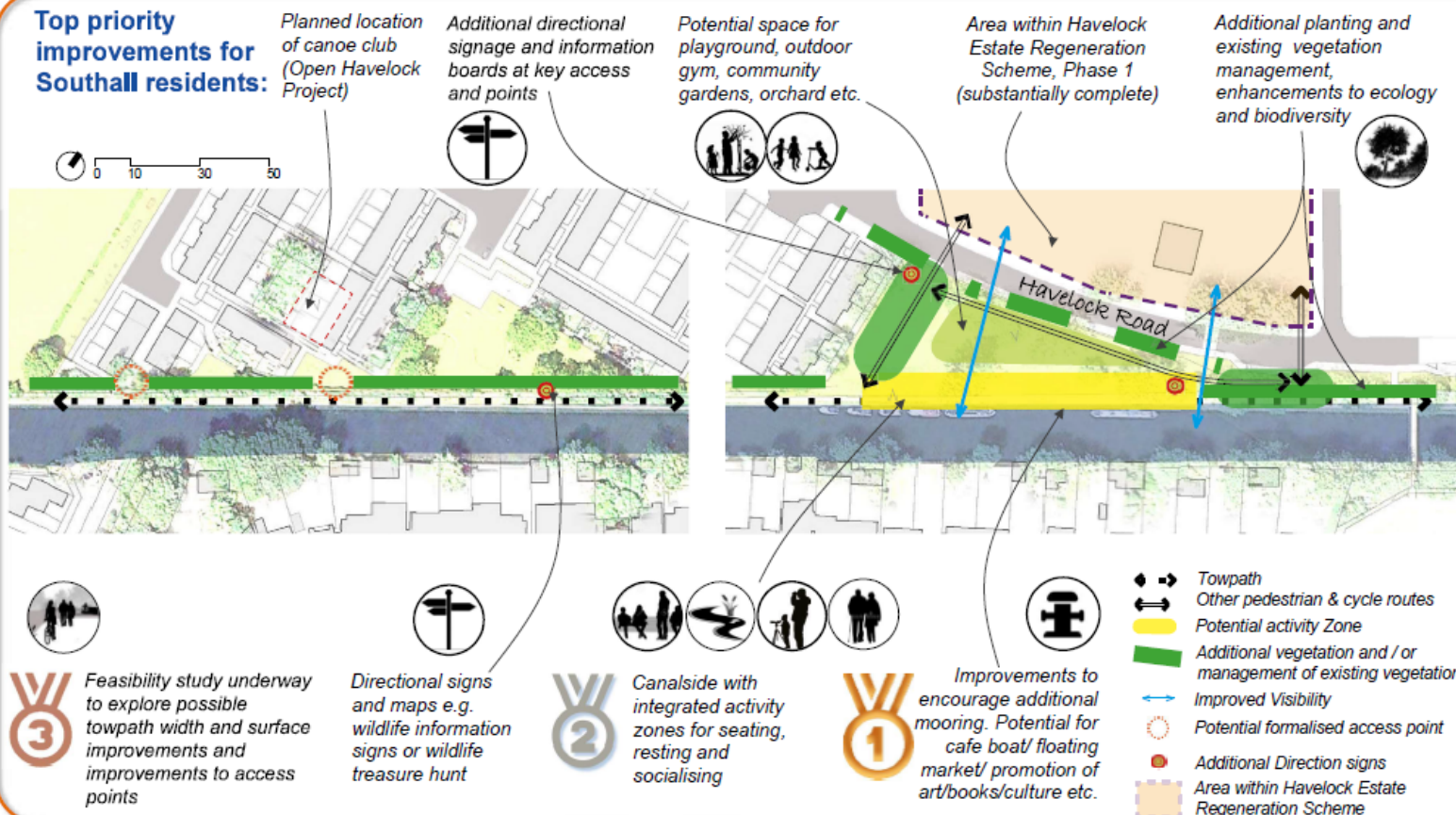
An attractive, accessible, safe and well-used canalside that forms a key part of the area's regeneration, and creates places that have strong local identity and increased sense of community ownership.

Key Response Themes:

- Improvements to the towpath and access were supported as well as for wildlife and biodiversity.
- Measures to create a greater sense of safety are important.
- Other park improvements and activities/activation were suggested.

**You
said...**

**Top priority
improvements for
Southall residents:**



**Other ideas
suggested by the
community include:**

Increased
waterside activity
and refreshments



Space for feeding
wildlife

Information points



Increased lighting

More bins
and recycling
points



Improvements for
cyclists

88% of all survey respondents agreed with the VISION:



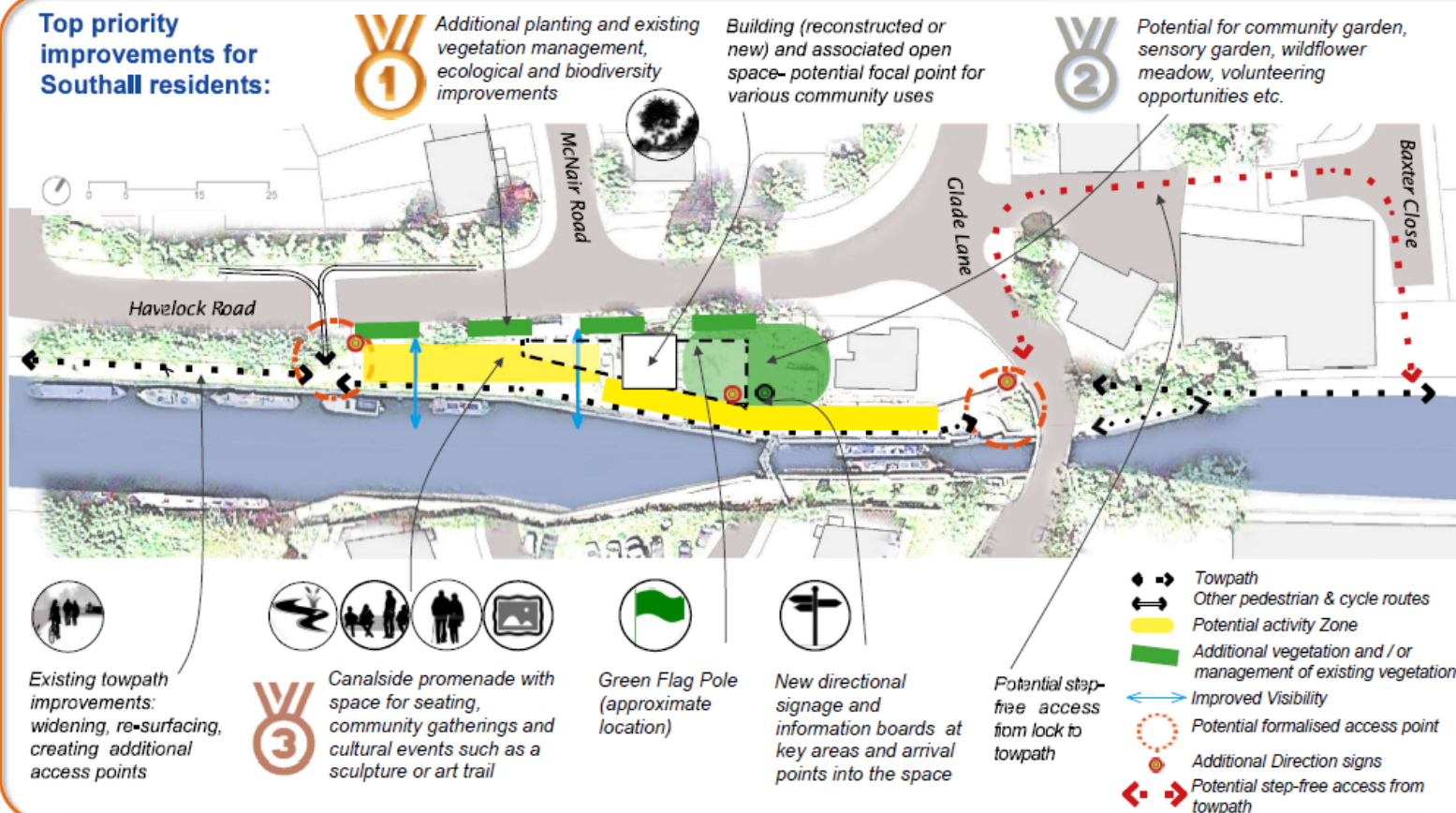
A community focal point with volunteering opportunities, an outdoor cultural/activity space that is respectful of the site's heritage, and clear starting point for enjoyment of the Hanwell Flight.

Key Response Themes:

- Space for community interaction and play.
- The importance of the area's natural environment and heritage.
- The role of the place in linking different neighbourhoods and surrounding destinations.

You said...

Top priority improvements for Southall residents:



Other ideas suggested by the community include:

Space for boat mooring



More seating

Trim trail



Increased lighting

More bins and recycling points



Conserve heritage

86% of all survey respondents agreed with the VISION:



A canalside that retains its valued peaceful character, but which has better physical and visual links with the rest of Park, a safer and more comfortable towpath, and which encourages greater community ownership through the growing of food and the management of its habitats.

Key Response Themes:

- Support for towpath and access improvements.
- Concern about issues of safety and anti social behaviour
- Additional suggestions for other park improvements and activities

You said...

Top priority improvements for Southall residents:

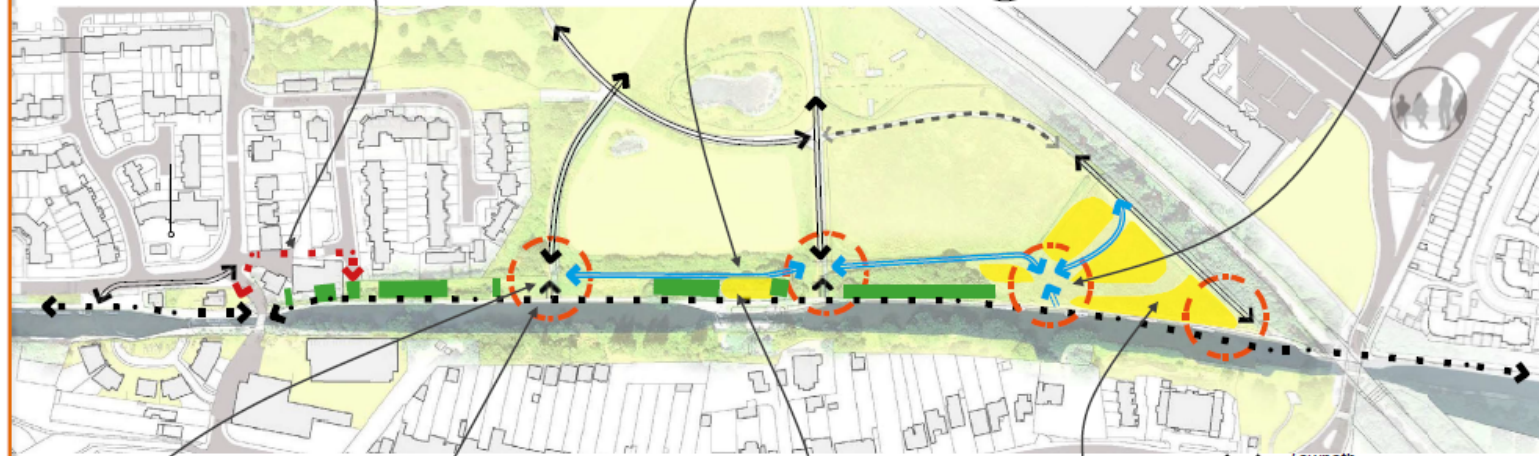
Potential step-free access from lock to towpath



Potential new recreational foot/cycle path away from towpath and a trim trail along it



Potential for stronger integration of towpath into existing Glade Lane 'loop' routes via creation of additional activity stops and focus points



Feasibility study underway to explore possible towpath width and surface improvements and improvements to access points



Directional signs and maps e.g. wildlife information signs or wildlife treasure hunt. Existing entrance points into the park improved with solid surfacing, bell-mouth corners, clearer lines of sight, better visibility into the park and signage



Potential for community space and food growing garden (raised beds etc.) with volunteering and adoption opportunities, marking the footprint of the old lock keepers cottage.



Potential for community orchard to reflect previous use of the land within part of the Park (with volunteering and adoption opportunities).

Other ideas suggested by the community include:



Space for outdoor events, concerts

More seating



Better onward signage

Increase safety, e.g. cameras, lighting



Promote the 'Three Bridges'