

Caring for the Ashby Canal

We're the charity working to protect and bring to life this 250-year-old network of canals and rivers spanning England and Wales. Not so long ago many canals were abandoned, and some lost forever. Today, with your support, wildlife is recovering, history is alive, boats are plentiful and spending time in this environment is contributing to our health and happiness.

Our mission is to keep this extraordinary network of canals and rivers alive, teeming with wildlife, transforming places they run through and enriching all of our lives. Your support today could help us care for the Ashby Canal and many more places, for today and generations to come.



DONATE



Please support our work & donate today

SCAN ME



The task of protecting the finest examples of working industrial heritage including the Ashby Canal, and the wildlife that calls it home, is growing all the time. As a charity we need you by our side more than ever. Please support our work today.

Registered with



FUNDRAISING
REGULATOR



Canal &
River Trust

Making life better by water

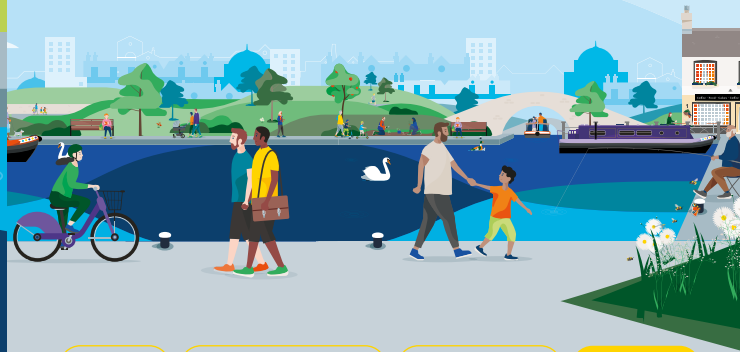
Keeping history alive

The Ashby Canal connected the Leicestershire coal mines and lime quarries to the Coventry Canal at Bedworth in Warwickshire.

Built close to active coal mines, the canal was frequently affected by mining subsidence. A major breach at Moira in 1918 nearly closed the waterway completely. However, the strategic importance of coal supplies during World War I kept it open and this essential cargo moving.

Today, you can enjoy gentle walks or cycle rides alongside the lock-free canal as it winds its way through the picturesque countryside from Bedworth to Moira.

Discover lots of fun things to do with the family by and on the water. Go to canalrivertrust.org.uk/explorers



Enjoy

Take Action

Volunteer

Donate

canalrivertrust.org.uk

Registered charity no. 1146792

March 2024



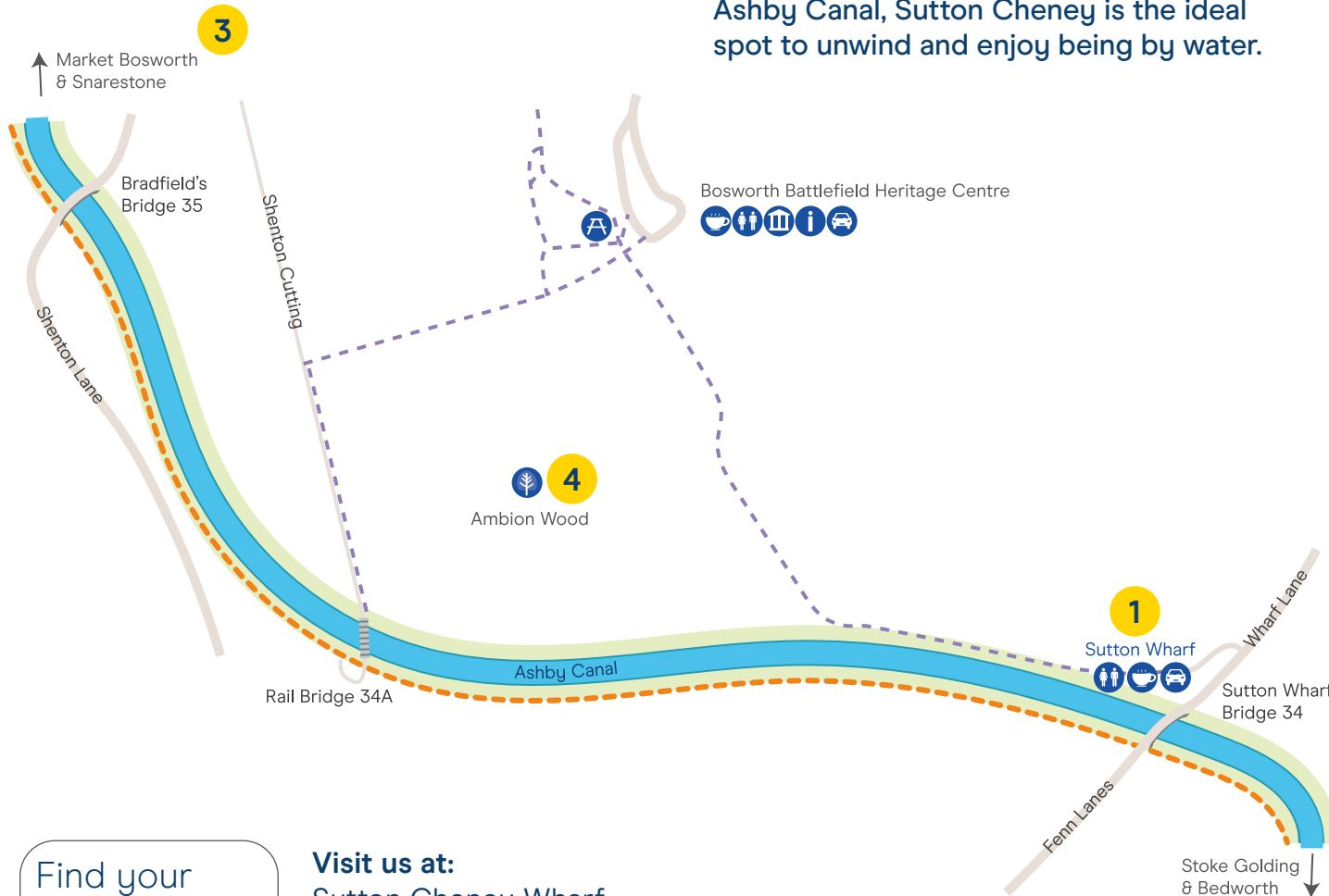
Canal &
River Trust

Welcome to Sutton Cheney

Connect with history and nature.



We're the charity making life better by water



A picturesque canalside village on the Ashby Canal, Sutton Cheney is the ideal spot to unwind and enjoy being by water.

5 things to do at Sutton Cheney

- 1 Relax in a waterside café and watch the boats making their way along the canal.
- 2 Try canal dipping – freshwater mussels are to be found here.
- 3 Enjoy a traffic-free cycle ride along the towpath to Shenton Station and see the steam engines on the Battlefield Line (1.5 miles/2.5km).
- 4 Take a walk through Ambion Woods to find King Richard's Well – a natural spring with a pyramidal monument built over it, King Richard apparently drank here in the days leading up to the Battle of Bosworth.
- 5 Enjoy a picnic by the canal and watch ducks, moorhens and coots on the water.

Find your way around

- towpath
- walk trail
- café
- toilets
- bench/picnic area
- museum
- information
- woodland
- parking

Visit us at:

Sutton Cheney Wharf,
Wharf Lane, Sutton
Cheney, Nuneaton
CV13 0AL

Allow 2–3 hours
for your visit

N
Map not to scale:
covers approx.
1¼ mile / 2km

Stay SAFE
Stay Away From the Edge!

For more information on visiting safely:
canalrivertrust.org.uk/safety

Details correct at time of print, please check before travelling

Did you know?

The Battle of Bosworth field, where 'Richard of York gave battle in vain' in 1485, was the last of the Wars of the Roses and ended the Middle Ages in England.

