

# Waterway Habitats



All sorts of animals live in and around fresh water. This includes canals, rivers, park ponds, streams - and even ditches!



Try this activity if you are working for any of the following badges: **Wildlife Explorer; Environment; Naturalist; Environment Partnership Award; Outdoor Challenge.**

## Go Pond Dipping

**Check out what lives in your local canal or river**

The best places to pond dip are at purpose built platforms!

### You will need

- a clean empty tub (a large ice-cream container is good)
- a fine net
- somewhere you can safely sit, kneel or stand. Remember don't lean too far forward or you might topple in!
- an adult you know to help you scoop
- something to wash your hands with

### To do

- Half fill your tub with pond water.
- Scoop the net in a figure of 8 to pick up tiny creatures.
- Empty the contents into your tub.

**Now make an underwater viewer to see what you've caught.**

### You will need

- a large milk or juice carton
- a piece of clear polythene about 20 cms square
- a thick rubber band or sticky tape

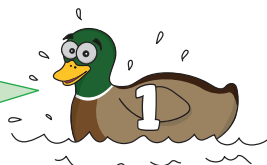
### To make

- 1 Cut off the top and bottom of a carton.
- 2 Stretch the polythene over the bottom. Fasten with a rubber band or tape.
- 3 Lower the viewer into the water and look through the open end of the viewer.



When you've finished release any creatures back into the water. Then wash your hands to get rid of any germs.

Remember the **SAFE** message: **Stay Away From the Edge**



**Leaders:** for advice on how to plan a visit go to

Insects that live in water have special ways of swimming, breathing and getting food. Some live in water all their lives, others only as babies.

**In the summer you could spot:**

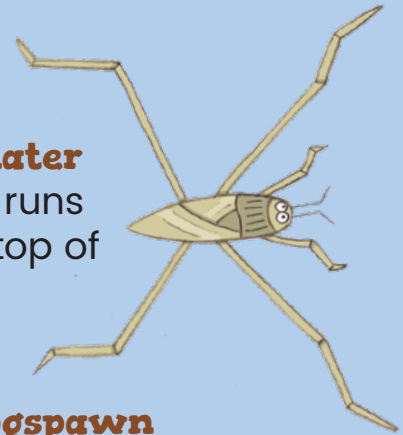
### 1 Whirligig beetle

Clue: it spins round in crazy circles!



### 2 Pond skater

Clue: it runs along on top of the water.



### 3 Water boatman

Clue: it 'rows' quickly through the water.



### 4 Frogspawn

Clue: look for drops of white jelly stuck together with small black spots (eggs) inside. The eggs grow tails and tiny tadpoles emerge and attach themselves to the jelly.



### 6 Caddisfly larvae

Clue: the larvae of caddisflies look like tiny moving pieces of pond bottom.



### 5 Great pond snail

Clue: look in shallow ponds and streams where there are plenty of water plants.



## Want to know more?

Click on [canalrivertrust.org.uk](http://canalrivertrust.org.uk) to:

- Take part in a canal-side environmental event such as bat walks or bird watches.
- Find out if your local canal location is good for pond dipping or bug hunting.
- Check out the new Canal & River Trust Explorers Habitats Topic Pack.
- Take part in the Trust's Great Nature Watch.
- Design a poster to help promote our native endangered species such as the white claw crayfish and water voles.



Remember the **SAFE** message:  
**Stay Away From the Edge**



**Leaders:** for advice on how to plan a visit go to