

Caring for Marple Locks

We're the charity working to protect and bring to life this 250-year-old network of canals and rivers spanning England and Wales. Not so long ago many canals were abandoned, and some lost forever. Today, with your support, wildlife is recovering, history is alive, boats are plentiful and spending time in this environment is contributing to our health and happiness.

Our mission is to keep this extraordinary network of canals and rivers alive, teeming with wildlife, transforming places they run through and enriching all of our lives. Your support today could help us care for Marple Locks and many more places, for today and generations to come.



DONATE



Please support our work & donate today

SCAN ME



The task of protecting the finest examples of working industrial heritage including Marple Locks, and the wildlife that calls it home, is growing all the time. As a charity we need you by our side more than ever. Please support our work today.

Registered with



FUNDRAISING
REGULATOR



Canal &
River Trust

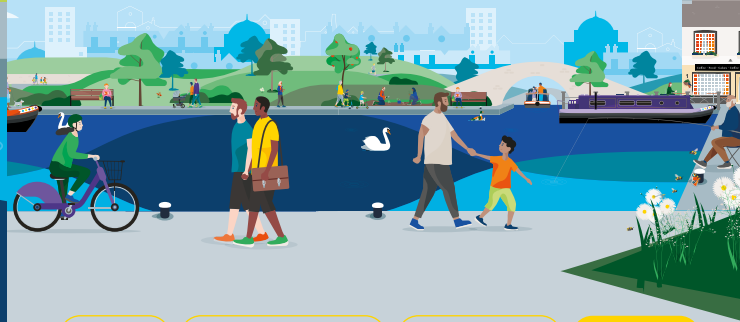
Making life better by water

Keeping history alive

The completion of Marple Locks in 1804 connected the two halves of the Peak Forest Canal, allowing goods to be transported along the waterway from Dukinfield Junction in Ashton-under-Lyne to Bugsworth Basin.

The upper section of the canal runs along the valley of the River Goyt and the lower section runs along the River Tame. The canal was built to ship Derbyshire limestone to Manchester.

Discover lots of fun things to do with the family by and on the water. Go to canalrivertrust.org.uk/explorers



Enjoy

Take Action

Volunteer

Donate

canalrivertrust.org.uk

Registered charity no. 1146792

March 2024



Canal &
River Trust

Welcome to Marple Locks

Where history and nature thrive.



We're the charity making life better by water

Here you'll find a fascinating glimpse of our industrial heritage – a flight of sixteen locks, a historic aqueduct and a railway viaduct – surrounded by beautiful countryside and woodland walks.

Find your way around

- towpath
- aqueduct
- café
- pub
- toilets
- shopping
- bench/picnic area
- play area
- point of interest
- Canal & River Trust Welcome Hub
- trip boat
- accessible
- marina
- parking
- railway station

Visit us at:
Marple Locks,
Station Road
SK6 7DA

Allow 2–3 hours
for your visit

Stay SAFE
Stay Away From the Edge!

For more information on visiting safely:
canalrivertrust.org.uk/safety

Details correct at time of print, please check before travelling.



5 things to do at Marple Locks

- 1** **Watch** boats pass through the locks – it is one of the steepest lock flights in Britain, raising the canal 209ft (64m) over the course of approximately 1 mile (1.6km)
- 2** **Stroll** along the towpath to see the aqueduct – a scheduled ancient monument – and the viaduct.
- 3** **Discover** Oldknow's legacy, he transformed the landscape of Marple and Mellor during the 1800s.
- 4** **Pause** for a chat with our friendly volunteers at our welcome hub and find out more about the area and its history.
- 5** **Stop** and look at the fantastic views from the locks.

Did you know?

There is a footbridge on each lock, each has a carved gargoyle in the keystone in the arch.

