

Caring for the River Stort

We're the charity working to protect and bring to life this 250-year-old network of canals and rivers spanning England and Wales. Not so long ago many canals were abandoned, and some lost forever. Today, with your support, wildlife is recovering, history is alive, boats are plentiful and spending time in this environment is contributing to our health and happiness.

Our mission is to keep this extraordinary network of canals and rivers alive, teeming with wildlife, transforming places they run through and enriching all of our lives. Your support today could help us care for Hertfordshire's canals, rivers and many more places, for today and generations to come.



DONATE



Please support our work & donate today

SCAN ME



The task of protecting the finest examples of working industrial heritage including the River Stort, and the wildlife that calls it home, is growing all the time. As a charity we need you by our side more than ever. Please support our work today.

Registered with



FUNDRAISING
REGULATOR



Canal &
River Trust

Making life better by water

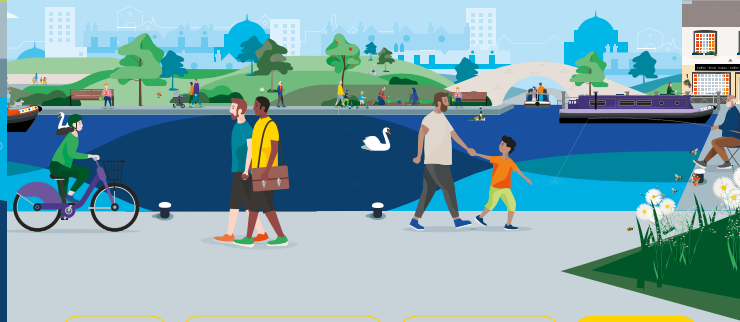
Keeping history alive

The River Stort joins the River Lee a few miles below Hertford. In 1769 parts of the River Stort were canalised to allow timber and cereals to be transported to Bishop's Stortford.

There were plans to construct a canal to extend the line beyond its terminus in the town to connect it with the River Cam near Cambridge, but trade never matched aspirations and the river was mainly used for local traffic.

Today, the towpath forms part of several scenic long-distance walks.

Discover lots of fun things to do with the family by and on the water. Go to canalrivertrust.org.uk/explorers



Enjoy

Take Action

Volunteer

Donate

canalrivertrust.org.uk

Registered charity no. 1146792

March 2024



Canal &
River Trust

Welcome to Bishop's Stortford


Explore the river, valley and countryside.







We're the charity making life better by water

Winding its way through Bishop's Stortford, the River Stort Navigation was once the main route for barges delivering grain to the malt mills. Today, it's a great route for country walks.

Visit us at:
Jackson Square Car Park,
Bishop's Stortford CM23 3XH

 Allow 1–2 hours
for your visit

Find your way around

-  towpath
-  café
-  pub
-  food & drink
-  toilets
-  shopping
-  bench/picnic area
-  play area
-  point of interest
-  museum
-  arts centre
-  parking
-  railway station



Stay SAFE
Stay **Away From the Edge!**

For more information on visiting safely:
canalrivertrust.org.uk/safety

Details correct at time of print, please check before travelling.



5 things to do in Bishop's Stortford

- 1** Enjoy a picnic on the banks of the canal overlooking Waytemore Castle Mound, a motte-and-bailey castle.
- 2** Wander along the towpath and enjoy the wildlife, boats and locks that can be seen.
- 3** Head south along the river to Rushy Mead Nature Reserve, a haven for reedbed species and the UK's most endangered mammal, the water vole (1.2 miles/2km)
- 4** Pause for a drink in one of the waterside cafes or pubs and enjoy relaxing by water.
- 5** Explore the historic town of Bishop's Stortford.

Did you know?

Most riverside towns are named after the river that flows through them, but here it's the other way round. The River Stort derives its name from Bishop's Stortford. 16th century cartographers, Christopher Saxton and William Camden, named it the Stort, assuming the town of Stortford was named after its ford, but in fact the river was actually called the Stour.

