

Caring for Grantham Canal

We're the charity working to protect and bring to life this 250-year-old network of canals and rivers spanning England and Wales. Not so long ago many canals were abandoned, and some lost forever. Today, with your support, wildlife is recovering, history is alive, boats are plentiful and spending time in this environment is contributing to our health and happiness.

Our mission is to keep this extraordinary network of canals and rivers alive, teeming with wildlife, transforming places they run through and enriching all of our lives. Your support today could help us care for Grantham Canal and many more places, for today and generations to come.



DONATE



Please support our work & donate today

SCAN ME



The task of protecting the finest examples of working industrial heritage including Grantham Canal, and the wildlife that calls it home, is growing all the time. As a charity we need you by our side more than ever. Please support our work today.

Registered with



FUNDRAISING
REGULATOR



Canal &
River Trust

Making life better by water

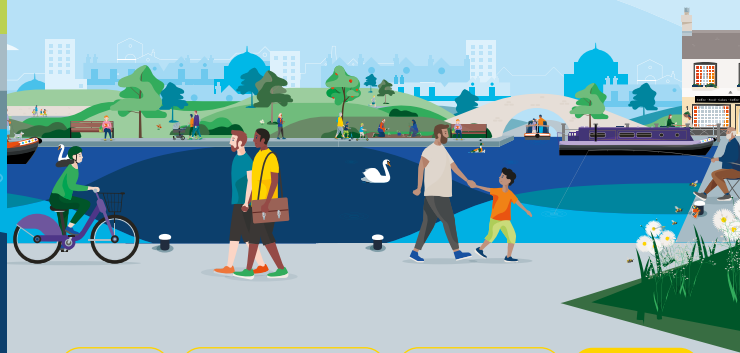
Keeping history alive

Canalmania swept to Grantham in the 1790s and a new canal was constructed to make it easier to transport coal and other goods from the River Trent to the town, and for agricultural produce such as corn, beans, malt and wool to be 'exported' around the country.

The canal steadily increased its profitability from when it opened in 1797 until 1841 when it was sold to a railway company. This sale marked the canal's gradual decline and it finally closed in 1936.

Since the 1970s, Grantham Canal Society has been steadily restoring parts of the waterway and two stretches are now open to boats.

Discover lots of fun things to do with the family by and on the water. Go to canalrivertrust.org.uk/explorers



Enjoy

Take Action

Volunteer

Donate

canalrivertrust.org.uk

Registered charity no. 1146792

March 2024



Canal &
River Trust

Welcome to Woolsthorpe Locks


A haven for wildlife.








We're the charity making life better by water

Much of the pretty Grantham Canal is a Site of Special Scientific Interest (SSSI) and home to a rich diversity of wildlife. You can still see evidence of its industrial past such as the magnificent Woolsthorpe Locks, which were designed by renowned canal engineer William Jessop.

Visit us at:
Duck Lane,
Woolsthorpe by Belvoir,
Grantham NG32 1NY

 Allow 1–2 hours
for your visit

Find your
way around

-  towpath
-  pub
-  shopping
-  trip boat
-  parking



4 

Stay SAFE
Stay Away From the Edge!

For more information on visiting safely:
canalrivertrust.org.uk/safety

N
Map not to scale:
covers approx.
1¼ miles / 2km

Details correct at time of print, please check before travelling

5 things to do at Woolsthorpe Locks

- 1** **Explore** the canal from the water – join one of Grantham Canal Society’s boat trips departing from the landing stage at Lock 18.
- 2** **Walk** along the towpath to see Locks 14 and 15 which have been lovingly restored by volunteers and members of Grantham Canal Society.
- 3** **Enjoy** one of the many waterside walks – the towpath has been built as a traffic-free peaceful walking and cycling route.
- 4** **Visit** nearby Belvoir Castle, where The Crown and Downton Abbey were filmed.
- 5** **Pause** to enjoy the array of wildlife that can be seen along the waterway including damselflies, swallows and buzzards.

Did you know?

In 1814-15 the Duke of Rutland constructed a private tramway between the wharf at Muston Gorse and Belvoir Castle to carry coal and other produce to the castle. It remained operational for 100 years.

