

NOTES

1. All drawing dimensions to be checked and verified prior to construction.
2. Drawings are design intent and for planning purposes only.
3. All services, drainage easements and placement of proposed trees in relation to services are to be checked and verified by the project engineers.
4. The landscape contractors shall make themselves aware of all service locations, health and safety and risk assessments prior to commencing planting operations.
5. All planting work to be carried out in accordance with BS4428 1989 'Code of Practice for General Landscape Operations'.
6. All structures, surfacing and fencing etc are by others unless otherwise noted.

OUTLINE LANDSCAPE SPECIFICATION

General

Identification of topsoil and subsoil resources on site will be required to inform the detailed design of planting, including the appropriate depth of soil horizons and the requirement for amelioration of the growing medium, prior to planting. If modifications to the soil are necessary, peat-free soil ameliorants will be used sparingly.

Site won topsoil that has been stored in temporary stock piles will be re-tested prior to use. Where site won topsoil is not available, imported topsoil will be used. Topsoil for for seeded areas shall be imported from an approved site, be in accordance with BS3882:2007 and be classified as Low Fertility.

All plant material to be in accordance with BS 3936 Part 1 (1992), 'Nursery Stock Specification for Trees and Shrubs', BS3936 Part 10: (1990) and 'Handling and Establishing Landscape Plants' HTA (1985, revised edition March 2002).

Any stock planted outside the recognised planting season to be containerised. Containerised plant stock to have fully developed root system within the specified pot size. Where growing-on in the nursery is necessary all plant material is to be re-potted to the next approved pot size, re-spaced to allow for 15-20% growth per growing season, and maintained to healthy vigorous growth irrespective of weather conditions.

All planting areas to be weed free prior to planting. Allow for an application of an approved translocated systemic herbicide in line with 1997 Control of Pesticide Regulations and 2003 COSHH.

Informal path between towpath and viewing area is to be mown grass. First placement of path to be agreed on site with Arboculturist and Ecologist and maintained in the agreed locations through use, with grass everywhere else to be left undisturbed.

Existing Tree & Hedgerows

All trees and hedges which are shown for retention should be inspected for safety by a qualified member of the Arboricultural Association and subject to BS 5837 2012 'Trees in Relation to Construction'.

They should be protected during all phases of construction with temporary fencing in accordance with BS 5837 2012 and must comply with all applicable planning conditions. Any tree surgery required shall also be in accordance with BS 3998 2010. The landscape contractor shall make the Contract Administer (CA) aware of any notifiable weeds on site.

Grasslands

In grassland areas, including where the existing grassland has become disturbed through construction operations, the specified mix in the key will be used.

Prior to sowing, the soil should be ploughed or rotovated and raked or harrowed to produce a medium fine, firm tilth. Fertiliser will not be applied at any point as this will lead to dominance of nutrient loving species such as broad-leaved grasses, nettles and docks.

The seed mix will be sown in accordance with the manufacturers specification to allow space for each species to establish and to produce good ground cover.

Seed will be sown in the autumn, winter or spring, selecting a time when the soil is moist and can be worked. Seeding will be sown by hand broadcasting, seed fiddle, spinner, hydra seeding of Cambridge (ribbed) roll will be used for one or two passes to firm and level the surface and create good seed soil contact.

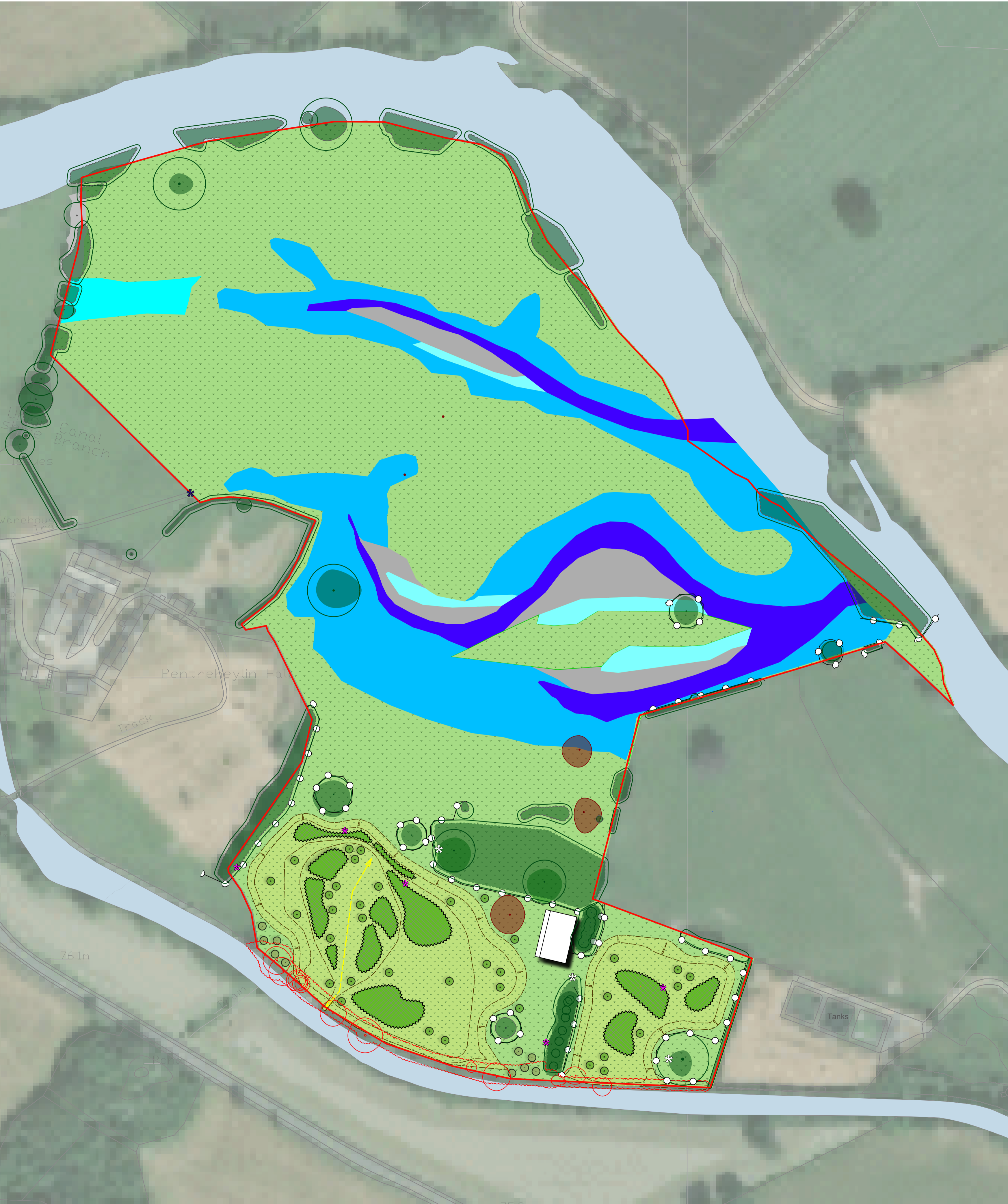
Standard Tree Planting

Trees to be planted into prepared tree pits, backfilled with topsoil/soil ameliorants as specified. At the time of planting, the tree pit diameter is to be 500mm greater than the root ball, wide enough to accommodate roots when fully spread. Trees shall have a 1000mm diameter circle around the base of the trunk to be maintained free from grass and spread with 75mm medium grade mulch. Mulch is not to be placed against the stem of the tree.

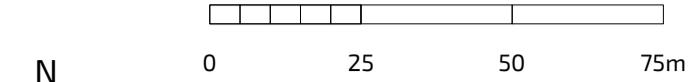
All trees are to be watered-in when planted with a minimum S4L, and then when required within the Maintenance Period to ensure survival.

Bareroot trees up to 12-14cm girth are to be single staked - stakes well driven into the ground minimum 300mm into bottom of tree pit, outside of the root ball.

Species	Name
Sambucus nigra	Elder
Corylus avellana	Hazel
Crateagus monogyna	Hawthorn
Prunus spinosa	Blackthorn
Ilex aquifolium	Holly



This drawing is the property of FPCR Environment and Design Ltd and is issued on the condition it is not reproduced, retained or disclosed to any unauthorised person, either wholly or in part without written consent of FPCR Environment and Design Ltd.



- Site Boundary
- Retained Vegetation
Refer to separate Arboricultural Report & Impact Assessment by Cura Terrae
- Root Protection Areas (RPA)
Refer to separate Arboricultural Report & Impact Assessment by Cura Terrae
- Retained deadwood for ecological purposes
Refer to separate Arboricultural Report & Impact Assessment by Cura Terrae
- Removed Vegetation
Refer to separate Arboricultural Report & Impact Assessment by Cura Terrae
- Protective Fencing
Refer to separate Arboricultural Report & Impact Assessment by Cura Terrae
- Existing building retained
Refer to separate General Arrangement Plan by Arcadis
- Informal mown footpath to viewing area
see notes for details
- River Vyrnwy & Montgomery Canal
- Proposed Wetland Features
Refer to separate Wetland Features Plan by Dynmaic Rivers Ltd for details
- Proposed Native Scrub Planting
- Proposed Native Standard Tree Planting
- Proposed Native Riparian Tree / Native Shrub Planting
- Existing Meadow Grassland
see notes for details
- Proposed Meadow Grassland
Emorsgate EM8 Meadow Grass for Wet Soils at 4g/m² or similar
- Proposed Bat / Bird Box
To be sited at appropriate locations and agreed with Project Ecologist
- Proposed Hibernacula
To be sited at appropriate locations and agreed with Project Ecologist
- Proposed Maintenance Gate (1.5m wide timber)
Refer to General Arrangement Plan by Arcadis for details

P01	30/04/25	First Issue	RJC	CEP
rev	date	description	drn	chk

client
Canal and River Trust

project
Vyrnwy Reserve,
Llanmynech

title
Green Infrastructure Plan

number
12805-FPCR-XX-XX-DR-L-0001

status
S3

rev
P01

FPCR | environment
& design