

Caring for Birmingham's canals

We're the charity working to protect and bring to life this 250-year-old network of canals and rivers spanning England and Wales. Not so long ago many canals were abandoned, and some lost forever. Today, with your support, wildlife is recovering, history is alive, boats are plentiful and spending time in this environment is contributing to our health and happiness.

Our mission is to keep this extraordinary network of canals and rivers alive, teeming with wildlife, transforming places they run through and enriching all of our lives. Your support today could help us care for Birmingham's canals and many more places, for today and generations to come.

DONATE



Please support our work & donate today

SCAN ME



The task of protecting the finest examples of working industrial heritage including Farmer's Bridge Locks, and the wildlife that calls it home, is growing all the time. As a charity we need you by our side more than ever. Please support our work today.

Registered with



FUNDRAISING
REGULATOR



Canal &
River Trust

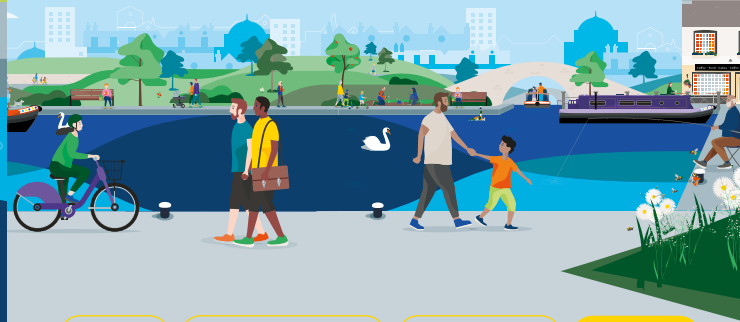
Making life better by water

Keeping history alive

The canals are an extremely important part of Birmingham's history. In the 1800s, Birmingham was the hub of the Industrial Revolution and the centre of England's canal network with 11 different canals converging on the city.

These waterways allowed massive quantities of raw materials including iron, coal and other heavy goods to be transported around the country. The finished products were then easily moved on for export. It's easy to see how Birmingham earned its nickname 'the workshop of the world'.

Discover lots of fun things to do with the family by and on the water. Go to canalrivertrust.org.uk/explorers



Enjoy

Take Action

Volunteer

Donate

canalrivertrust.org.uk

Registered charity no. 1146792

March 2024



Canal &
River Trust

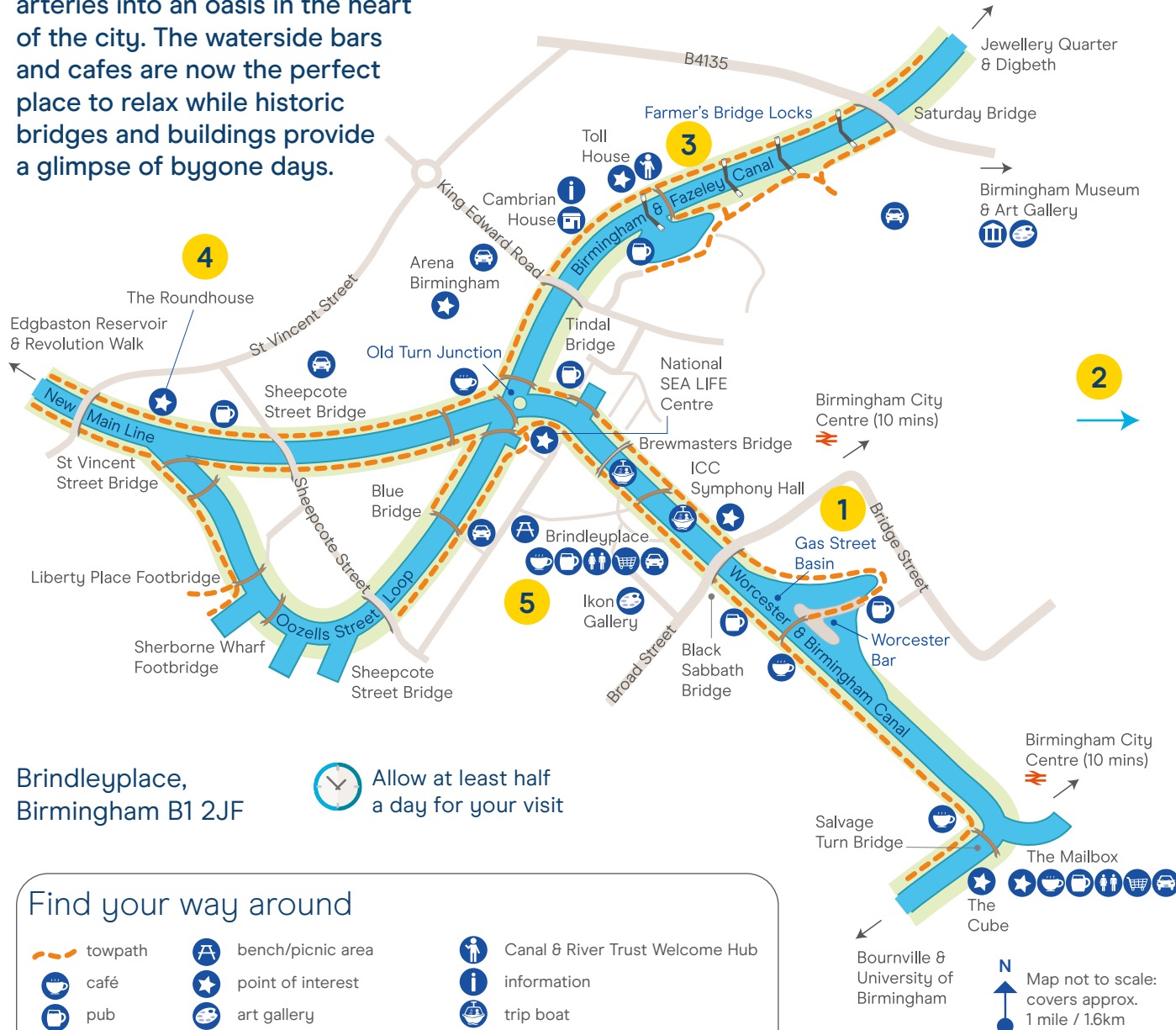
Welcome to Birmingham

The heart of our canal network.



We're the charity making life better by water

Central Birmingham's canals have been transformed from industrial arteries into an oasis in the heart of the city. The waterside bars and cafes are now the perfect place to relax while historic bridges and buildings provide a glimpse of bygone days.



Brindleyplace,
Birmingham B1 2JF

Allow at least half a day for your visit

Find your way around

- | | | |
|----------|----------------------------|---------------------------------|
| towpath | bench/picnic area | Canal & River Trust Welcome Hub |
| café | point of interest | information |
| pub | art gallery | trip boat |
| toilets | museum | parking |
| shopping | Canal & River Trust office | railway station |

Details correct at time of print, please check before travelling.

5 things to do at Birmingham city centre canals

- 1** **Walk** around Gas Street Basin, the meeting point for two canals. It was once a thriving port but now is home to colourful canal boats.
- 2** **Experience** the city on one of the many walking tours.
- 3** **Visit** our Toll House Welcome Hub at Farmer's Bridge Locks and chat with our friendly volunteers. They'll tell you about our activities, events and the story of our waterways.
- 4** **Stop by** the Roundhouse and join one of their exciting tours on or off the water such as kayaking or paddleboarding.
- 5** **Enjoy** a coffee in one of the many cafes or pubs in Brindleyplace.

Did you know?

Birmingham does indeed have more miles of canal than Venice. There are 35 miles (56km) of waterways in the city, whereas there are only 26 miles (42km) of canals in Venice. We are very thankful to have so many volunteers helping us to care for them!



Stay SAFE
Stay Away From the Edge!

For more information on visiting safely:
canalrivertrust.org.uk/safety