

# Ellesmere Canal Yard 'Forging Ahead'



## 1: The Hub

- New CRT Offices
- New welfare, mess and volunteers' areas
- New, efficient, warm and well serviced workshop
- Shared common space and gardens
- Retained yard with maintained road and wharf access

## 2: The Dock

- Dry dock retained with enhanced, safe access
- New craft and making studios onto rear 'mews'
- Enhanced WC provision (including accessible)
- Enhanced waterside experience and function for boaters
- Consequential benefit for the heritage asset

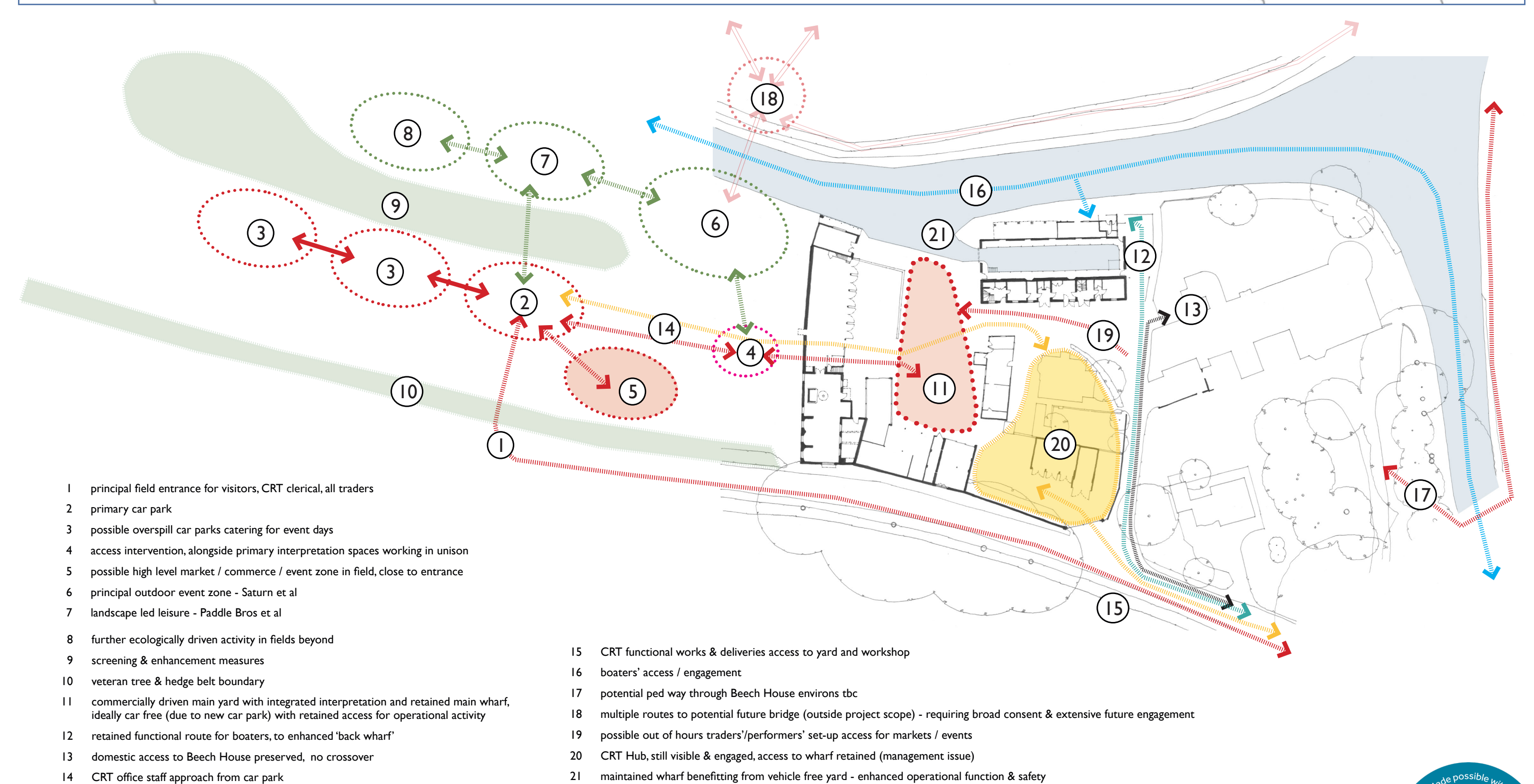
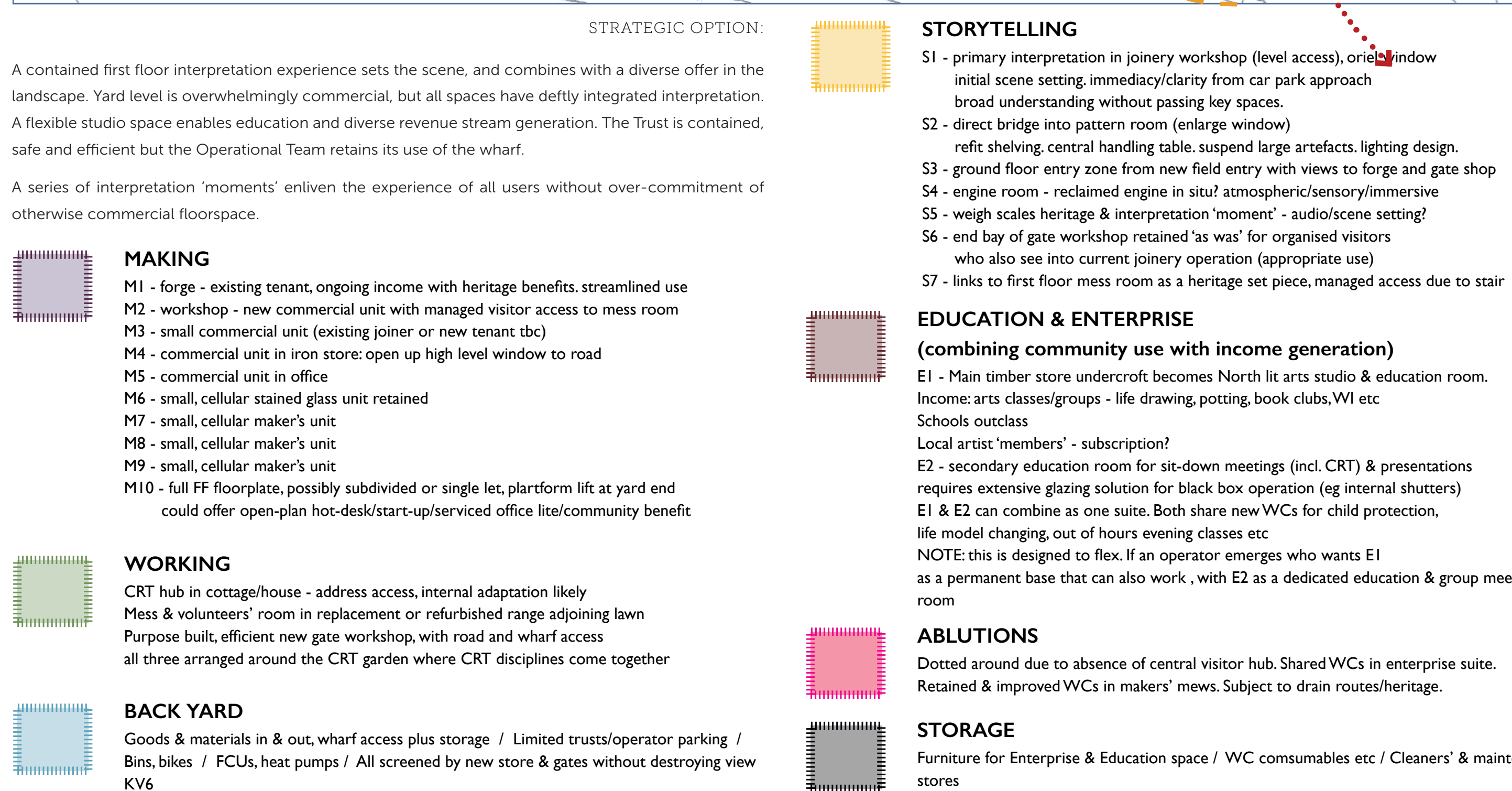
## 3: The Yard

- Stripped back to heritage assets
- Levels addressed
- Trust activity continues
- Storytelling through intervention, interpretation and media
- A variety of commercial end users
- Access for community & educational groups
- Public events

## 4: The Field

- Enhanced access and entry
- Subtly integrated car parking
- Ecological enhancement
- Events and education
- Enhanced setting for Saturn







# Ellesmere Canal Yard - Key Deliverables of 'Forging Ahead'

## Commercial Opportunity

Creating varied, flexible spaces for small to medium scale commercial operators, with a desired focus on heritage crafts such as print making, weaving, and sign making.

Example: converted stables (former CRT offices) becoming 'Makers' Mews'.



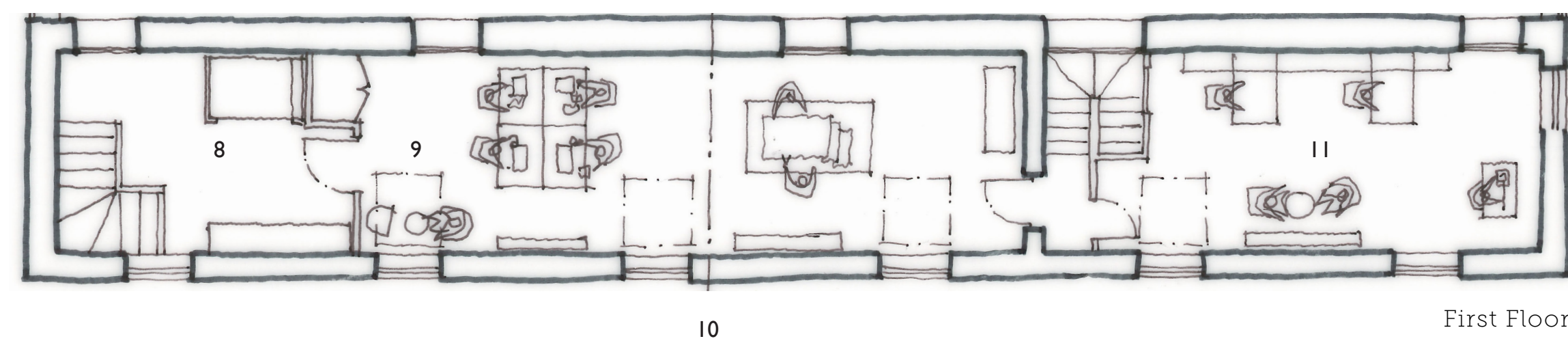
Print Maker



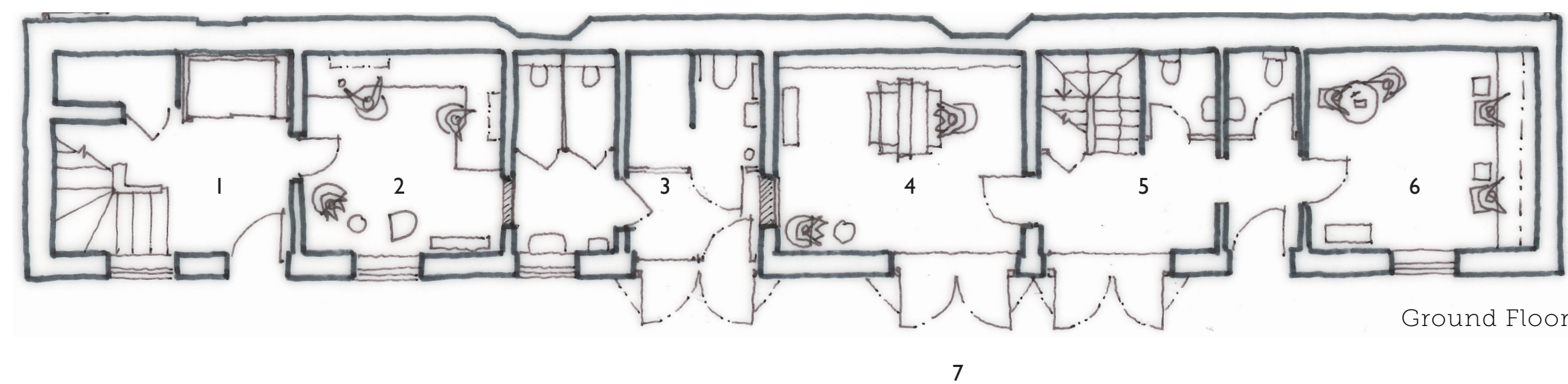
Weaver



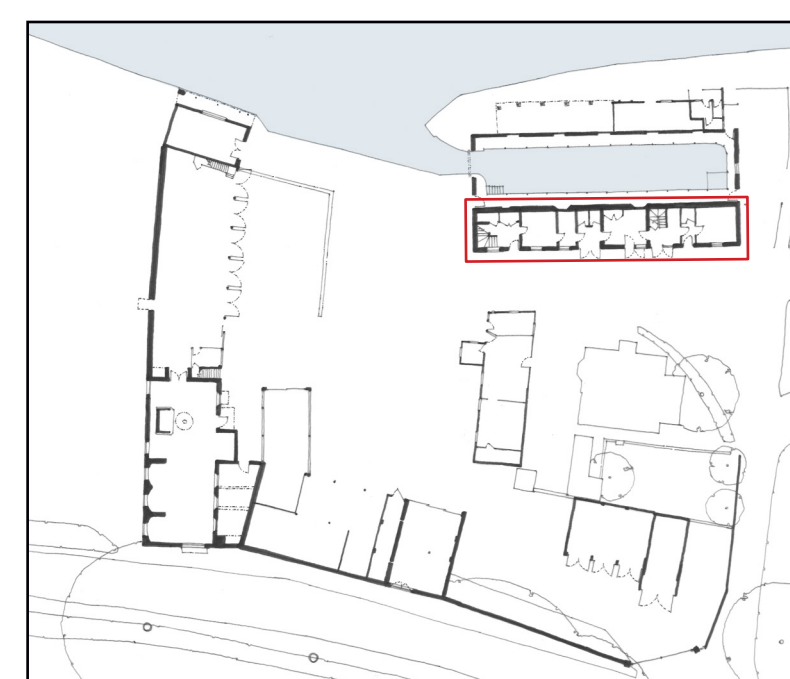
Sign Maker



First Floor



Ground Floor



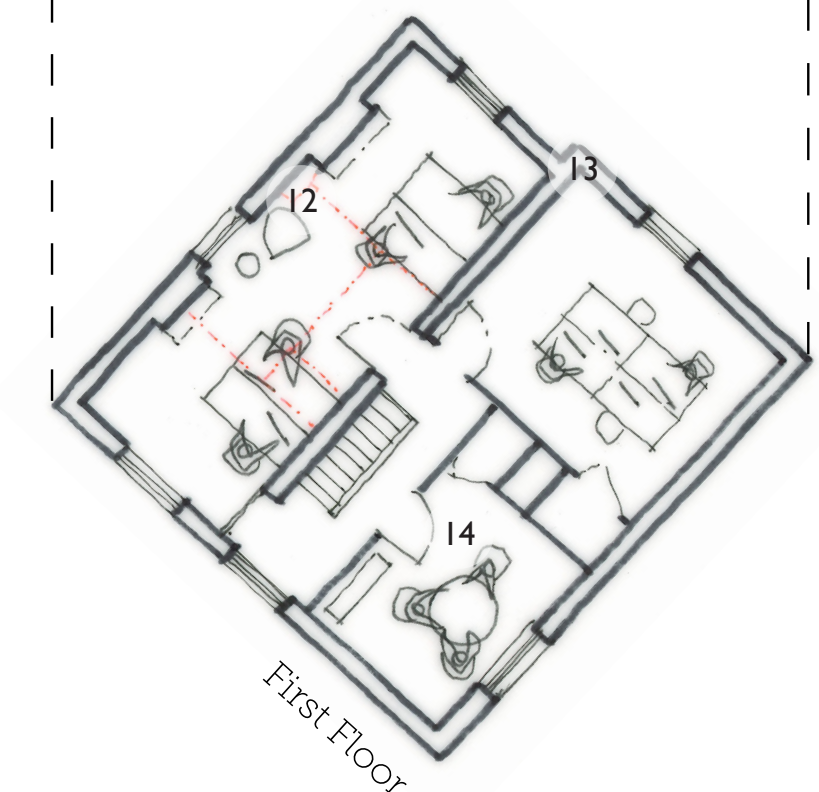
- 1 Stair Lobby with New Platform Lift
- 2 Maker's Studio 1
- 3 Self-Contained WC Area with Accessible Cubicle
- 4 Maker's Studio 2
- 5 Second Stair Core with Improved WC Facilities
- 6 Maker's Studio 3
- 7 Historic Doors Held Open to Reveal Studios to Passers By
- 8 Stair & Lift Lobby Serving First Floor Studios, Possibly with Shared Welfare Facilities for All Tenants
- 9 Maker's Studio 4 - Rooflit
- 10 Scope to Subdivide According to Demand
- 11 Maker's Studio 5

## Ongoing Trust Activity

A new home for the Trust's existing operation, offering co-location and integration of offices, Ops. team and welfare / volunteering areas arranged around a shared garden, with enhanced Trust interface for boaters. Potentially exploring a change of use to 1 Beech House - one of a number of preliminary options.



- 1 Improved Setting for LBs
- 2 Maintained Operational Yard
- 3 New Workshop Frees Up Historic Building
- 4 Services & Bike / Bin Storage
- 5 Welfare & Volunteers Area
- 6 Wet Lobby
- 7 CRT Kitchen
- 8 Office / with Level Entry Boater Reception
- 9 Office
- 10 New Platform Lift
- 11 WCs + Cloaks
- 12 Open Plan Office
- 13 Office
- 14 Office
- 15 Shared Garden (Existing)
- 16 Reduced Use of Drive - Domestic + Boaters Only



First Floor



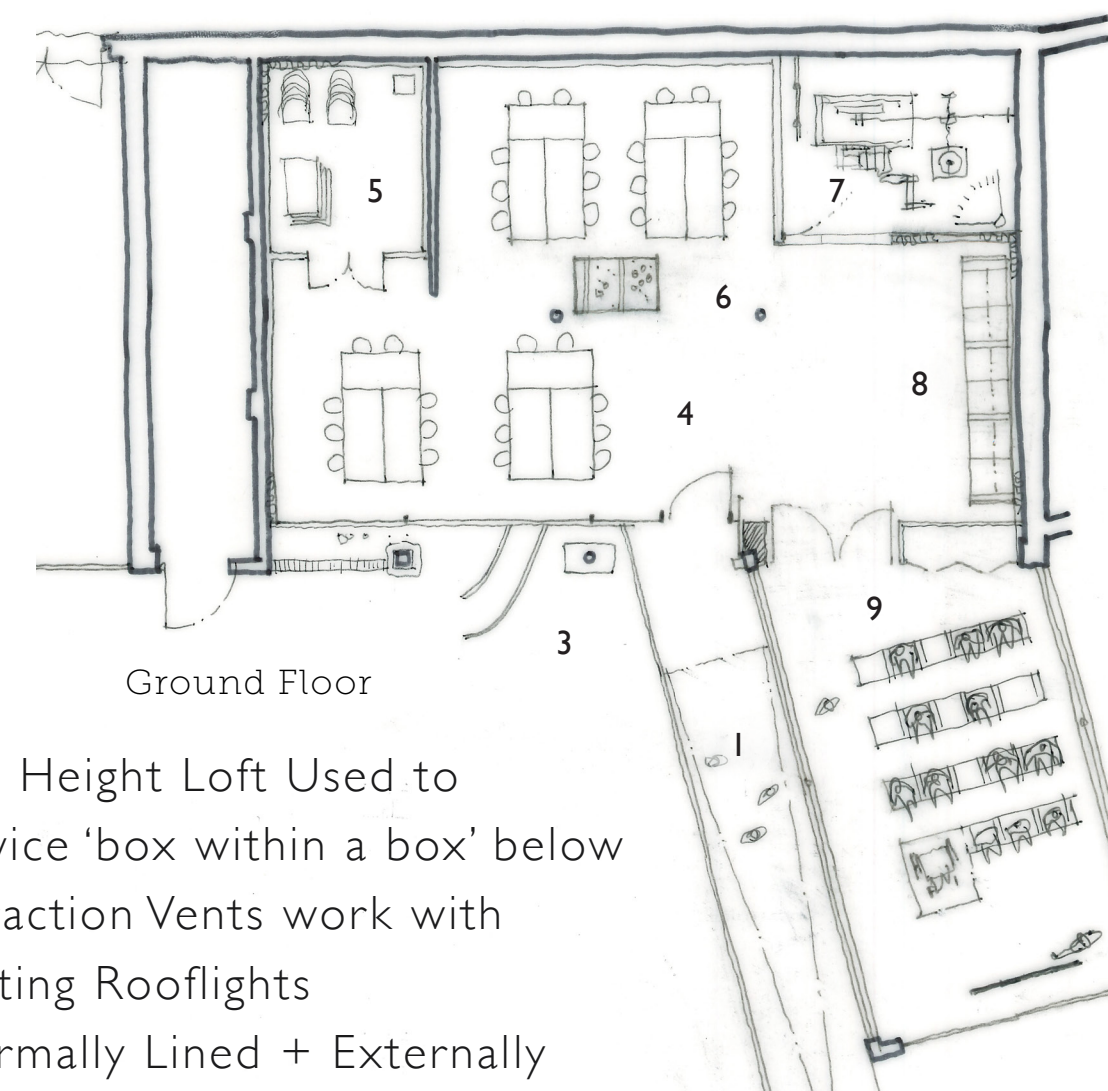
# Ellesmere Canal Yard - Key Deliverables of 'Forging Ahead'

## Community Benefit

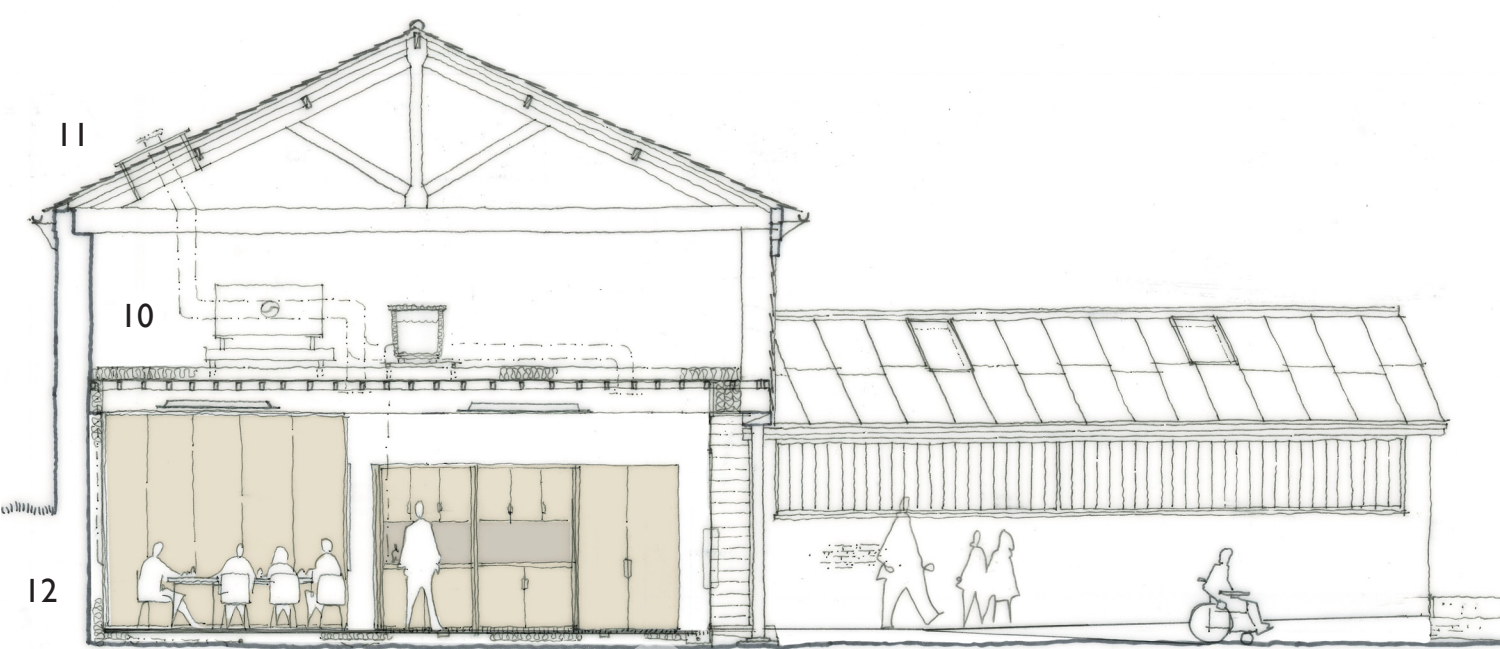
A flexible, heritage-led destination offering public, educational & commercial opportunities for a variety of user groups. A 'light touch', in design terms, creating a 'box within a box' and engaging fully with the adjoining yard.



- 1 New Ramped & Stepped Routes as Part of Site-Wide Access Strategy
- 2 Elegant, Glazed Elevation Set Back from Heritage Fabric
- 3 Rich Textures of Yard Revealed
- 4 Main Education / Commercial / Studio Space
- 5 Furniture Store Working with Existing Fabric
- 6 Glazed Floor Panel Reveals Rails
- 7 Possible Capturing of Existing Machinery as Interpretation Event
- 8 Clear + Distinct Joinery Intervention Offering Storage, Sinks, Kitchen
- 9 Flexible Meeting + Event Room (also for Trust use)



Ground Floor



Section through workshop 13

- 10 Low Height Loft Used to Service 'box within a box' below
- 11 Extraction Vents work with Existing Rooflights
- 12 Thermally Lined + Externally Drained Masonry
- 13 Raised Floor Works with Levels + Avoids Excessive Heritage Disturbance

## Interpretation & Learning

Educational outcomes and evocative storytelling moments scattered across site.

Example: light touch refurbishment of the pattern room, opening up to diverse user groups - possibly in conjunction with a new 'field entrance'.



- 1 Sensitive Repairs
- 2 Elegant, New LED Lighting
- 3 Sharing Table Enabling Interaction with Artefacts (with possible app/barcode link to archive)
- 4 Re-Imagine Storage Rack for optimised Artefact Display

