

## Caring for Bingley Five Rise

We're the charity working to protect and bring to life this 250-year-old network of canals and rivers spanning England and Wales. Not so long ago many canals were abandoned, and some lost forever. Today, with your support, wildlife is recovering, history is alive, boats are plentiful and spending time in this environment is contributing to our health and happiness.

Our mission is to keep this extraordinary network of canals and rivers alive, teeming with wildlife, transforming places they run through and enriching all of our lives. Your support today could help us care for Bingley Five Rise and many more places, for today and generations to come.



DONATE



Please support our work & donate today

SCAN ME



Canal & River Trust

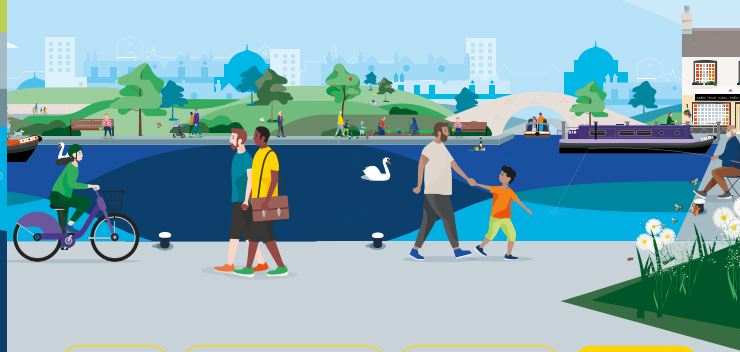
Making life better by water

## Keeping history alive

One of the greatest feats of canal engineering of its day, the Grade I listed Bingley Five Rise Locks opened in 1774. Boats need to navigate six gates and five chambers to climb or descend 60 feet (18 metres).

30,000 people turned out to cheer their opening, and the local militia fired their field guns in salute.

Discover lots of fun things to do with the family by and on the water. Go to [canalrivertrust.org.uk/explorers](https://canalrivertrust.org.uk/explorers)



Enjoy

Take Action

Volunteer

Donate

[canalrivertrust.org.uk](https://canalrivertrust.org.uk)

Registered charity no. 1146792

March 2024



Canal & River Trust

## Welcome to Bingley Five Rise

One of the wonders of the waterways.



We're the charity making life better by water

The task of protecting the finest examples of working industrial heritage including Bingley Five Rise Locks, and the wildlife that calls it home, is growing all the time. As a charity we need you by our side more than ever. Please support our work today.


Registered with










FUNDRAISING REGULATOR

Bingley Five Rise Lock staircase is the steepest lock staircase in Britain and is the most spectacular feature of the Leeds & Liverpool Canal. It can take boats 45 minutes to go up the locks and 30 minutes to go down.

**Visit us at:**  
Five Rise Locks Café,  
Beck Lane, Bingley  
BD16 4DS

 Allow half a day for your visit

### Find your way around

-  towpath
-  point of interest
-  café
-  parking
-  pub
-  railway station
-  shopping



**N**  
Map not to scale:  
covers approx.  
½ mile / 0.8km

**Stay SAFE**  
**Stay Away From the Edge!**

For more information on visiting safely:  
[canalrivertrust.org.uk/safety](http://canalrivertrust.org.uk/safety)

Details correct at time of print, please check before travelling.

## 5 things to do at Bingley Five Rise

- 1** **Enjoy** a picnic whilst watching boats working their way through the locks.
- 2** **Take** a break at the cafe and enjoy some time relaxing by water.
- 3** **Cycle or walk** along the towpath and catch the train back.
- 4** **Visit** the viewing area at the top of the locks and take in the stunning views across the Aire Valley.
- 5** **Stroll** along the canal to Three Rise Locks.



### Did you know?

The lock gates at Bingley Five Rise are some of the tallest in the country. Every lock gate is unique and they are made using the same traditional methods as they were 250 years ago.