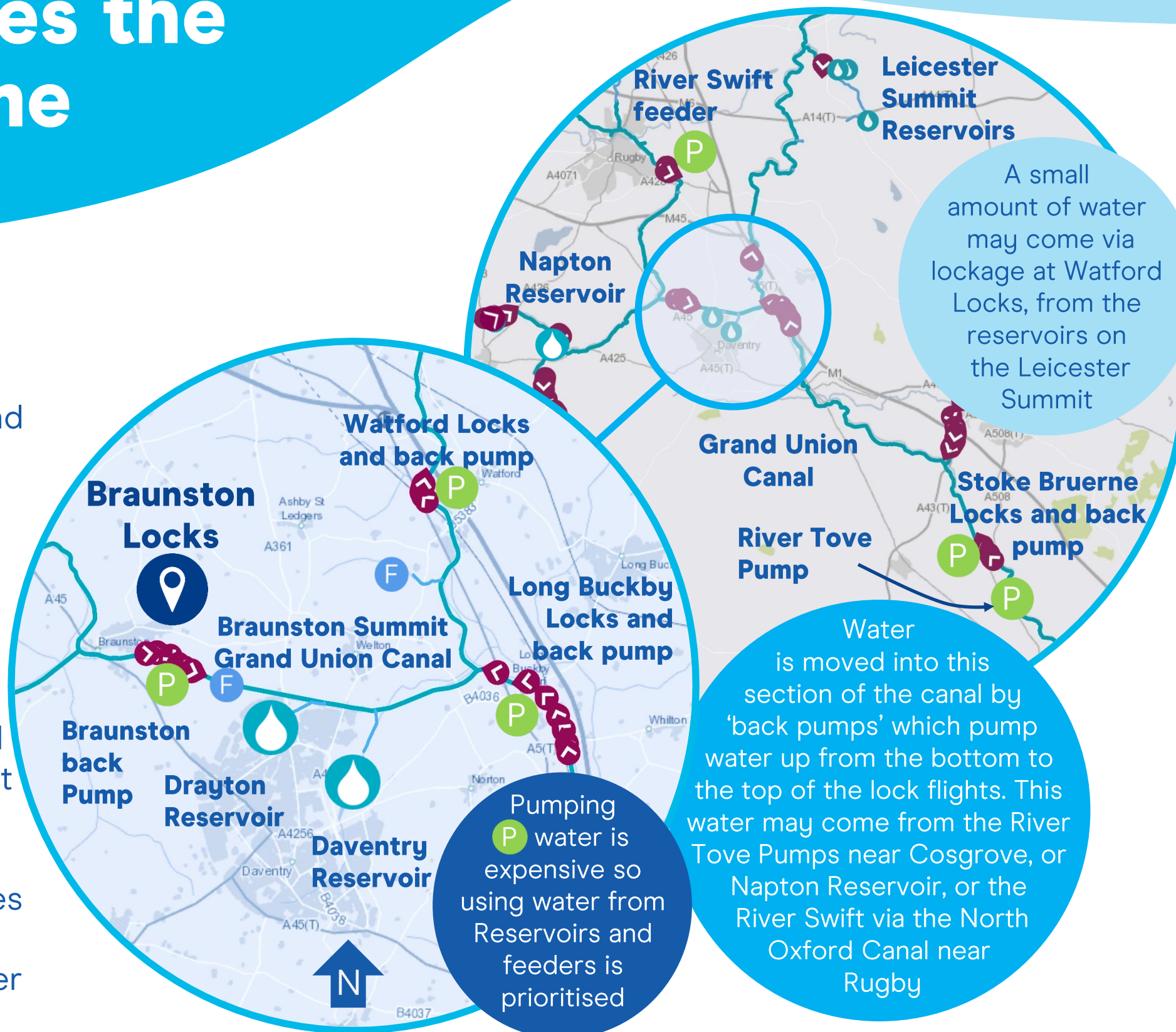


# Where does the water come from?

The section of the Grand Union Canal at the top of Braunston Locks is called the 'Braunston Summit' and feeds the lock flights at both ends, Braunston and Long Buckby.

In this busy waterway the water comes mainly from Drayton and Daventry Reservoirs, supplemented by pumping from adjacent sections.

A small amount also comes from feeders **F** (diverted streams) and surface water discharge



For other locations go to [canalrivertrust.org.uk/water-sources](https://canalrivertrust.org.uk/water-sources)

# Where does the water come from?

The section of the Grand Union Canal at the top of Long Buckby Locks is called the 'Braunston Summit' and feeds the lock flights at both ends, Long Buckby and Braunston.

In this busy waterway the water comes mainly from Drayton and Daventry Reservoirs, supplemented by pumping from adjacent sections.

A small amount also comes from feeders **F** (diverted streams) and surface water discharge



For other locations go to [canalrivertrust.org.uk/water-sources](https://canalrivertrust.org.uk/water-sources)



# Where does the water come from?

## Stoke Bruerne

The water in the Grand Union Canal at Stoke Bruerne has two main sources.

From the north (upstream) water is mainly supplied by Drayton and Daventry Reservoirs on the Braunston Summit,

From the south (downstream) water is pumped up from the River Tove and the River Great Ouse. Pumping from the rivers is strictly controlled to maintain river ecology.

Pumping uses electricity and is expensive so using reservoir water is prioritised

Pumps at all the lock flights on this section of the canal redistribute water by lifting it around the locks, so water from the Great Ouse can make its way to the Braunston Summit

Feeders (diverted streams) and surface water discharge contribute a small amount of water

All of these water sources are dependent on rainfall to maintain supply the canal



For other locations go to [canalrivertrust.org.uk/water-sources](https://canalrivertrust.org.uk/water-sources)