

Caring for Hawkesbury Junction

We're the charity working to protect and bring to life this 250-year-old network of canals and rivers spanning England and Wales. Not so long ago many canals were abandoned, and some lost forever. Today, with your support, wildlife is recovering, history is alive, boats are plentiful and spending time in this environment is contributing to our health and happiness.

Our mission is to keep this extraordinary network of canals and rivers alive, teeming with wildlife, transforming places they run through and enriching all of our lives. Your support today could help us care for Warwickshire's canals and many more places, for today and generations to come.

DONATE



Please support
our work &
donate today

SCAN ME



The task of protecting the finest examples of working industrial heritage including Hawkesbury Junction, and the wildlife that calls it home, is growing all the time. As a charity we need you by our side more than ever. Please support our work today.

Registered with



FUNDRAISING
REGULATOR



Canal &
River Trust

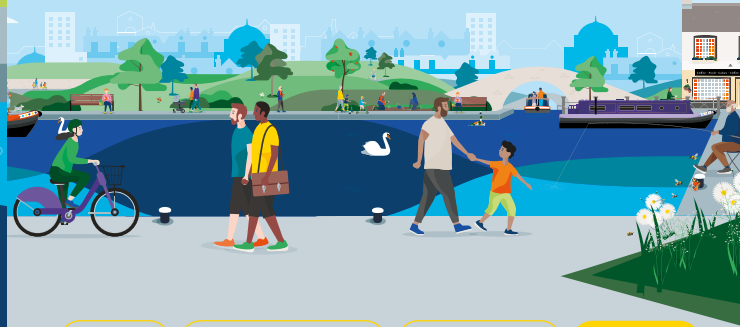
Making life better by water

Keeping history alive

Hawkesbury Junction is the meeting point of two major canals – Coventry and Oxford. Built in the late 18th century, it connected the heart of England to the capital and the south, allowing boats to travel from the Midlands to London and beyond.

Today, this historical landmark is home to a number of preserved canal buildings, including the striking Gothic-style Hawkesbury Junction Bridge. It is a popular destination for boaters and tourists and a starting point for exploring the Coventry and Oxford Canals.

Discover lots of fun things to do
with the family by and on the water.
Go to canalrivertrust.org.uk/explorers



Enjoy

Take Action

Volunteer

Donate

canalrivertrust.org.uk

Registered charity no. 1146792

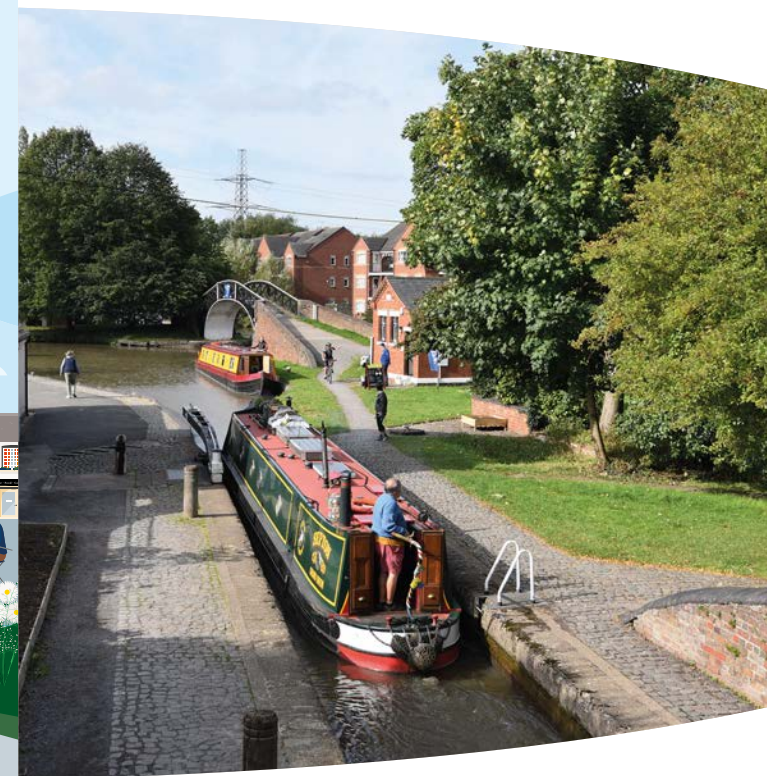
March 2024



Canal &
River Trust

Welcome to Hawkesbury Junction


Where waters meet.



We're the charity making life
better by water








Where waters meet and people gather, iron bridges criss-cross the canal, birdsong and breeze in the trees. A place where you are surrounded by history and nature.

Visit us at:
14 Sutton Stop,
Coventry CV6 6DF

 Allow 1–2 hours
for your visit



Find your way around

-  towpath
-  pub
-  bench/picnic area
-  point of interest
-  art installation
-  Canal & River Trust Welcome Hub
-  parking

Stay SAFE

Stay Away From the Edge!

For more information on visiting safely: canalrivertrust.org.uk/safety

Details correct at time of print, please check before travelling.

5 things to do at Hawkesbury Junction

- 1 Follow** part of the Centenary Way along the towpath to Bedworth (1.25 miles/2km).
- 2 Pause** for a rest on one of the benches and simply enjoy being by water.
- 3 Take** to two-wheels for a traffic-free bike ride into Coventry (4.5 miles/7.2km).
- 4 Visit** our welcome hub, our friendly volunteers are always happy to share what they know about the canal.
- 5 Watch** the boats as they navigate their way through the lock.

Did you know?

Hawkesbury Junction is known locally as Sutton Stop, reportedly after a local family who provided several lock keepers in the 19th century.



N
Map not to scale:
covers approx.
½ miles / 0.8km