

## Caring for Saul Junction

We're the charity working to protect and bring to life this 250-year-old network of canals and rivers spanning England and Wales. Not so long ago many canals were abandoned, and some lost forever. Today, with your support, wildlife is recovering, history is alive, boats are plentiful and spending time in this environment is contributing to our health and happiness.

Our mission is to keep this extraordinary network of canals and rivers alive, teeming with wildlife, transforming places they run through and enriching all of our lives. Your support today could help us care for Gloucestershire's canals, rivers and many more places, for today and generations to come.



DONATE



Please support our work & donate today

SCAN ME



The task of protecting the finest examples of working industrial heritage including Saul Junction, and the wildlife that calls it home, is growing all the time. As a charity we need you by our side more than ever. Please support our work today.

Registered with



FUNDRAISING  
REGULATOR



Canal &  
River Trust

Making life better by water

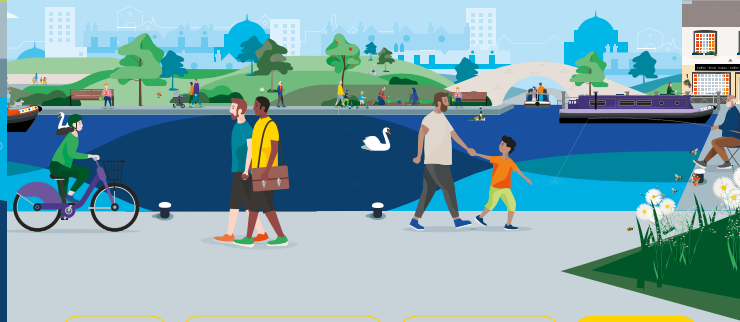
## Keeping history alive

The original plan in 1793 was to build a ship canal for oceangoing vessels to travel between Berkeley and Gloucester, avoiding a treacherous stretch of the River Severn.

Beset by poor weather, shortage of labour and disputes with landowners, the canal was eventually routed to Sharpness, and became known as the Gloucester & Sharpness Canal. When it opened in 1827, it was one of the broadest and deepest canals in the world.

The Gloucester & Sharpness Canal crosses the Stroudwater Canal at Saul Junction. Ships and crew, boats and boaters and cargo from around the world met here.

Discover lots of fun things to do with the family by and on the water. Go to [canalrivertrust.org.uk/explorers](https://canalrivertrust.org.uk/explorers)



Enjoy

Take Action

Volunteer

Donate

[canalrivertrust.org.uk](https://canalrivertrust.org.uk)

Registered charity no. 1146792

March 2024



Canal &  
River Trust

## Welcome to Saul Junction

A meeting point for canals and people.



We're the charity making life better by water

Saul Junction is where the Gloucester & Sharpness Canal meets the rural Stroudwater Canal. Once a meeting place for ships and boats from around the world, today it's a perfect place to spot wildlife.



**Visit us at:**  
Saul Junction Church Lane,  
Saul, Gloucestershire GL2 7LA

Allow 2–3 hours  
for your visit

### Find your way around

- towpath
- swingbridge
- café
- toilets
- Canal & River Trust Welcome Hub
- information
- trip boat
- marina
- boat club
- orchard
- parking

**Stay SAFE**  
**Stay Away From the Edge!**  
For more information  
on visiting safely:  
[canalrivertrust.org.uk/safety](http://canalrivertrust.org.uk/safety)

Map not to scale:  
covers approx.  
¾ mile / 1.2km

Details correct at time of print, please check before travelling.

## 5 things to do at Saul Junction

- 1** **Cycle** along the towpath to the 'boat graveyard' Purton Hulks (6.5 miles/10.5km). Old boats were beached here to protect the canal banks from erosion by the tidal River Severn.
- 2** **Explore** the canal afloat by taking a boat trip and find out more about the waterway.
- 3** **Take** a break in the cafe and feel the benefit of spending some time by water.
- 4** **Have** a chat with our friendly volunteers and bridge keepers at Junction Bridge House.
- 5** **Take** a stroll along the Stroudwater Navigation and explore the canal as it undergoes.

### Did you know?

To create the Junction, the Stroudwater Canal needed to be raised approximately 4ft (1m) to meet the Gloucester & Sharpness Canal. This involved the construction of a new lock. A house was also built at the Junction for the official, who collected tolls from boats passing from one canal to the other.

