



Canal &
River Trust
Making life better by water

2023 Annual Lockage Report

Produced: January 2024



Annual Lockage Report 2023

The monitoring of lock operations across the Canal & River Trust network remains an essential element in our water resources management but also to understand the changing patterns in use of the 2,000 miles of waterways in our care. This report marks the 23rd year of publishing an Annual Lockage Report, and covers the period January to December 2023.

Lockage can be defined simply as lock usage through the filling and emptying of a lock chamber, which in turn allows the movement of water and passage of boats. It is important to distinguish lockage from boat movements, which are the actual number of boats which travel through a lock. We have separated boat movements from lockage to acknowledge that averages can be skewed by the boat:lockage ratio (in the case of a typical broad lock, the ratio can be between one and four boats per lockful of water used). For this report, we have based the lockage analysis of each region on those sites with complete records for both 2022 and 2023 (known as the comparison sites). The number of comparison sites included in the 2023 report is 147, a decrease of 11 compared with the previous report (158). This has mainly been due to site lock counter failures. In the appendix we have included, for information only, those sites where the data was of insufficient quality for 2022 and/or 2023, and therefore could not be used for the year-to-year comparison.

The reasons for variations across the different regions and individual locks are numerous and complex. Nationally, the total comparable *recorded* lockage in 2023 was around 2% lower than in 2022. The busiest site recorded was Locks 2&3, Hillmorton on the Oxford canal, which saw a total of 7,582 in 2023 (there are paired locks at this location) even though it recorded a 2% decrease compared with 2022. Lock 2, New Marton on the Llangollen was the next busiest lock with 7,264 lockages recorded in 2023 which was an increase of 1% since the previous year.

The report contains the following: a summary table ranking the Regions by average annual lock counts for 2023, a map showing the approximate distribution of lockage across the network (interpolated from the nearest lock counter data), maps showing the percentage and actual change in recorded lockage across the network from 2022 to 2023, a table of the 2023 lockage data, ranked from the busiest lock to the least busy, to allow easy identification of where a lock sits nationally in terms of its usage and then detailed reports of lockage and boat movements for the comparison sites within each Region for the last three years, separated into the individual canals within the Region. We have also included a map of the locations of registered volunteer lock keeper teams.

I trust you find this report informative. If you have any queries, or would like to see the data in a different format or for a specific purpose, please contact us via email at water.information@canalrivertrust.org.uk



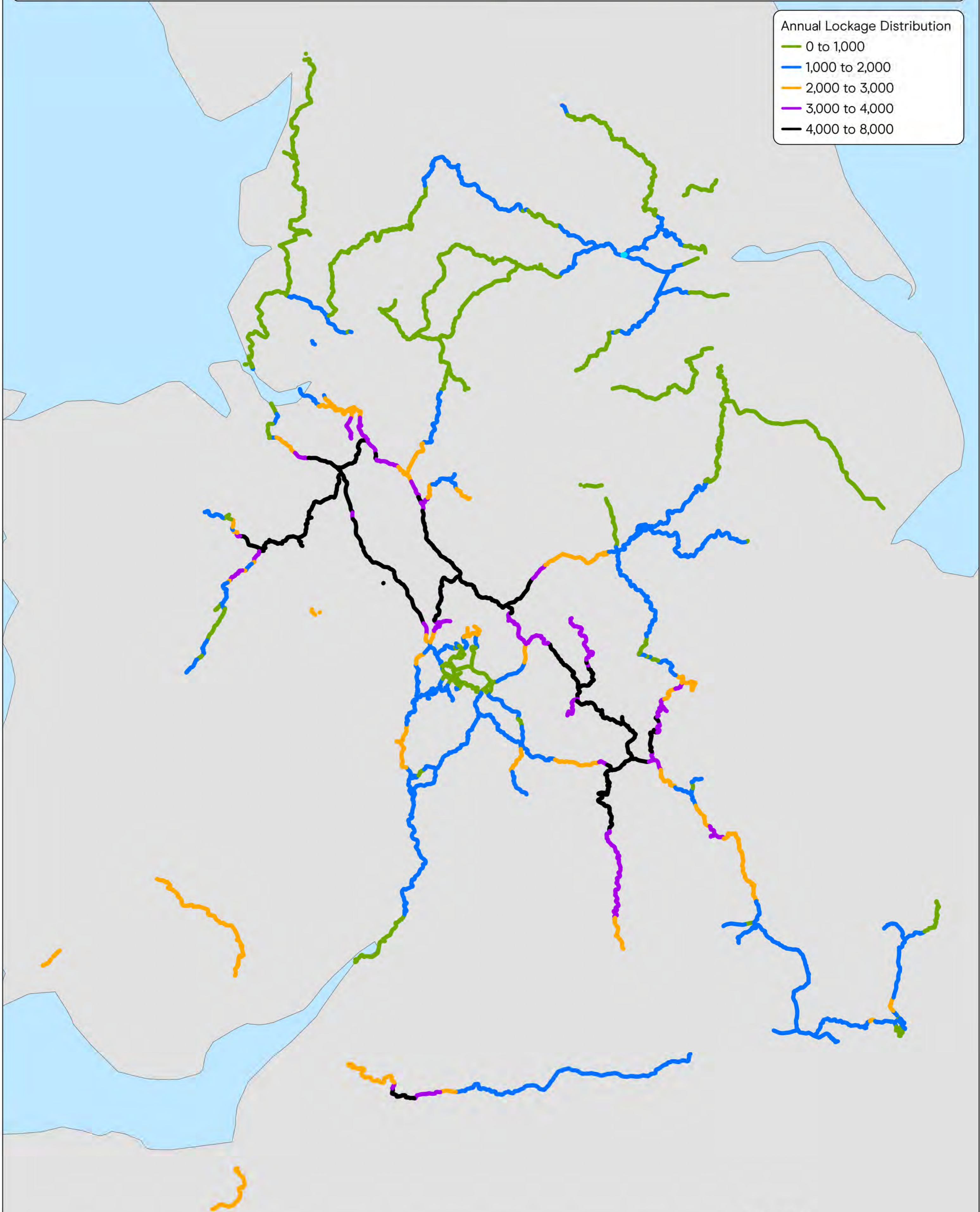
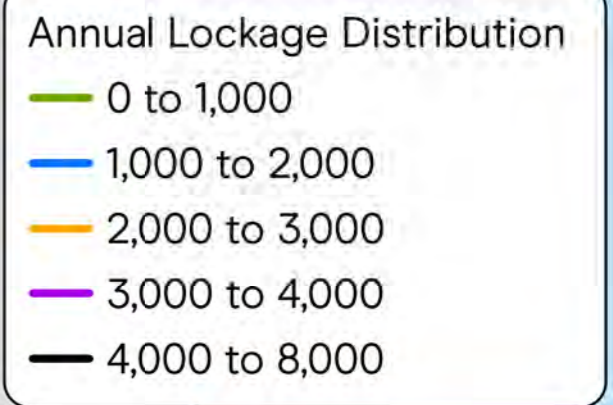
Dr Adam Comerford

National Hydrology Manager, Water Management team

Ranking of Regions 2023

2023 Ranking	Region	Average 2022 Lockage	Average 2023 Lockage	Ranking Position compared with 2022
1	West Midlands	2809	2946	=
2	East Midlands	2593	2332	=
3	Wales & South West	2135	2006	=
4	London & South East	2118	1971	=
5	North West	1445	1555	=
6	Yorkshire & North East	906	982	=

Annual Lockage Distribution 2023

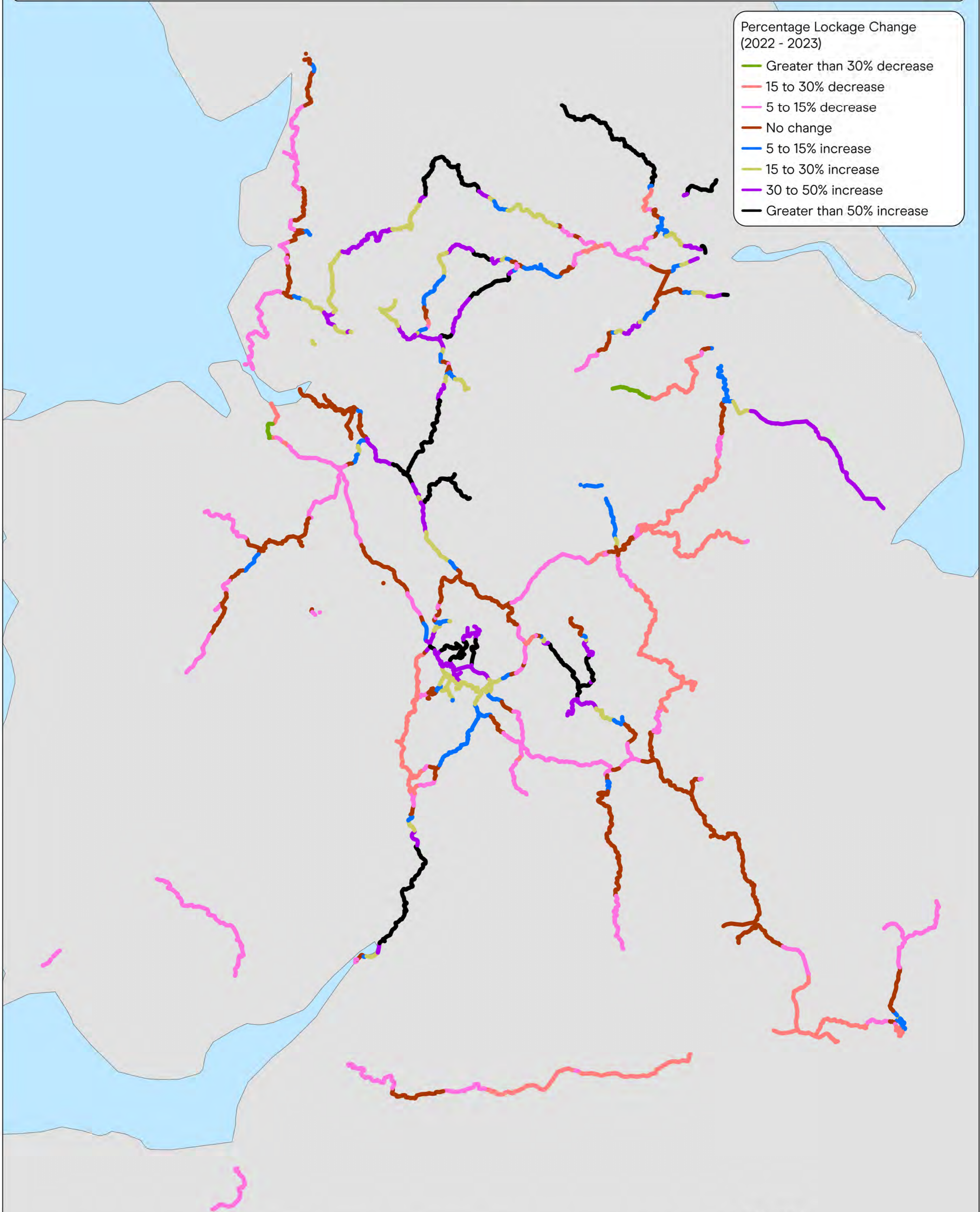


Percentage Lockage Change 2022 - 23



Percentage Lockage Change
(2022 - 2023)

- Greater than 30% decrease
- 15 to 30% decrease
- 5 to 15% decrease
- No change
- 5 to 15% increase
- 15 to 30% increase
- 30 to 50% increase
- Greater than 50% increase

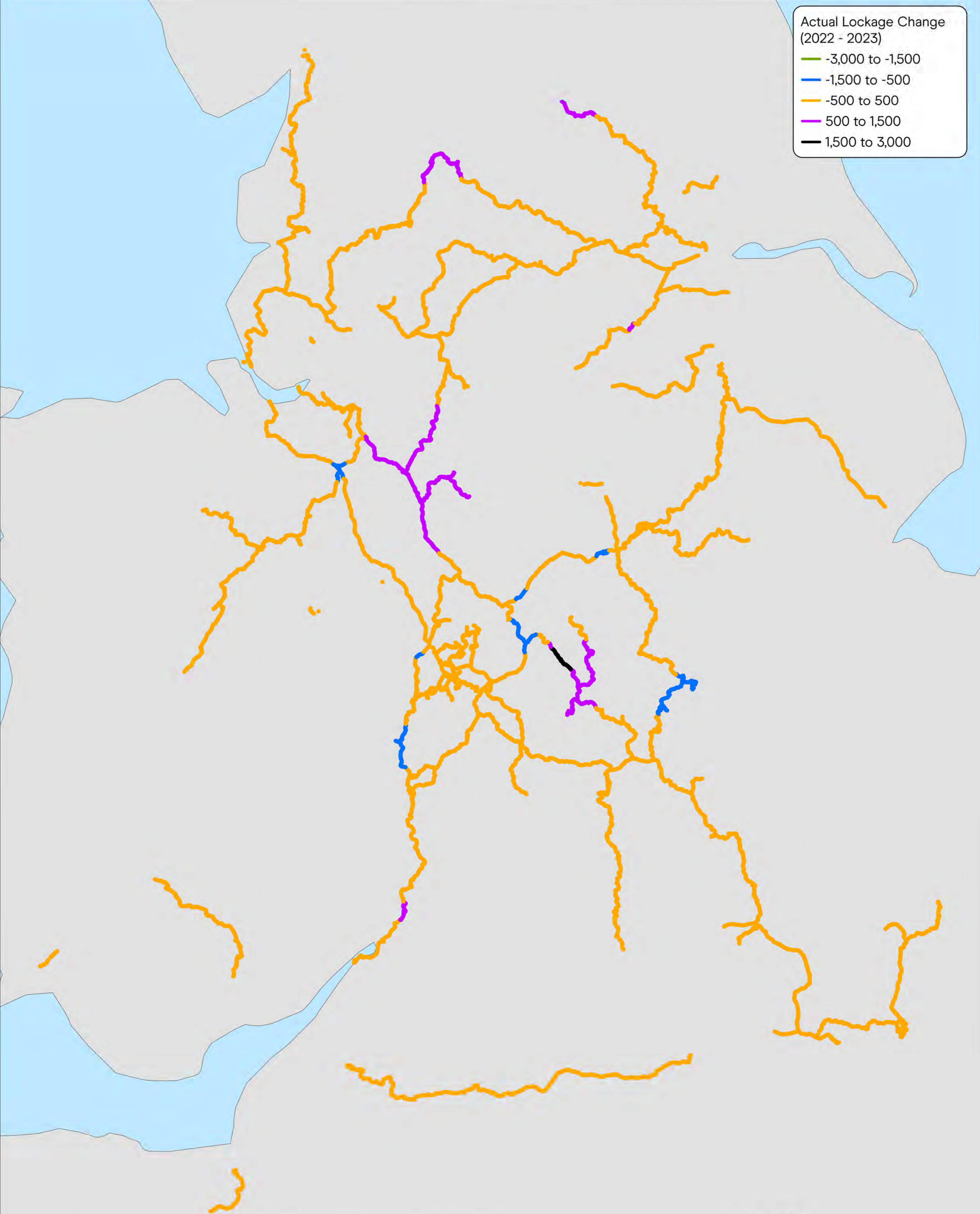


Actual Lockage Change 2022 - 23



Actual Lockage Change (2022 - 2023)

- 3,000 to -1,500
- 1,500 to -500
- 500 to 500
- 500 to 1,500
- 1,500 to 3,000



Lockage Ranking 2023

This table shows the lockage report comparison sites in order of most recorded lockages to least recorded lockages in 2023.

Rank	Waterway	Canal	Site	2023 Lockage
1	West Midlands	Oxford Canal	Locks 2&3, Hillmorton	7582
2	West Midlands	Llangollen	Lock 2, New Marton	7264
3	North West	Shropshire Union	Lock 4, Cholmondeston	6830
4	Wales and South West	Kennet & Avon	Lock 14, Bradford on Avon	6183
5	West Midlands	Staffordshire & Worcestershire	Lock 43, Tixall	5655
6	West Midlands	Oxford Canal	Lock 15, Marston Doles	5034
7	North West	Llangollen	Marbury Lock	4957
8	West Midlands	Shropshire Union	Wheaton Aston Lock	4852
9	West Midlands	Grand Union	Lock 1, Calcutt	4834
10	East Midlands	Grand Union	Lock 6, Braunston	4754
11	London and South East	Oxford Canal	Lock 21, Claydon Bottom	4686
12	West Midlands	Trent & Mersey	Lock 12, Alrewas	4616
13	West Midlands	Trent & Mersey	Lock 11, Wychnor	4596
14	West Midlands	Coventry & Ashby	Lock 7, Baddesley Basin	4574
15	West Midlands	Trent & Mersey	Lock 40, Summit (Etruria)	4571
16	West Midlands	Staffordshire & Worcestershire	Lock 33, Brick Kiln	4539
17	West Midlands	Oxford Canal	Lock 8, Napton Bottom	4533
18	West Midlands	Trent & Mersey	Lock 27, Star	4383
19	North West	Shropshire Union	Lock 1, Wardle	4281
20	East Midlands	Grand Union	Lock 1, Watford	4230
21	West Midlands	Trent & Mersey	Lock 37, Cockshutes	3976
22	North West	Shropshire Union	Lock 3, Audlem	3829
23	North West	Trent & Mersey	Lock 75, Big Lock	3732
24	North West	Trent & Mersey	Lock 71, Kings	3661
25	East Midlands	Grand Union	Lock 7, Buckby Top	3647
26	East Midlands	Grand Union	Lock 21, Cosgrove	3546
27	London and South East	Oxford Canal	Lock 32, Nell Bridge	3513
28	West Midlands	Coventry & Ashby	Lock 12, Glascote Top	3408
29	Wales and South West	Kennet & Avon	Lock 15, Semington	3289
30	East Midlands	Grand Union	Lock 9, Foxton	3266
31	London and South East	Oxford Canal	Lock 40, Bakers	3191

Rank	Waterway	Canal	Site	2023 Lockage
32	East Midlands	Grand Union	Lock 1, Welford	3154
33	London and South East	Oxford Canal	Lock 42, Roundham	2968
34	London and South East	Oxford Canal	Lock 44, Dukes	2949
35	London and South East	Oxford Canal	Lock 46, Isis	2763
36	North West	Trent & Mersey	Lock 42, Limekiln	2695
37	West Midlands	Staffordshire & Worcestershire	York Street	2531
38	Wales and South West	Monmouthshire & Brecon	Lock 65, Coombes	2399
39	Wales and South West	Monmouthshire & Brecon	Lock 69, Brynich	2359
40	East Midlands	Trent & Mersey	Lock 1, Derwent Mouth	2314
41	West Midlands	Grand Union	Pumping Station 2, Stockton	2307
42	East Midlands	Trent & Mersey	Lock 6, Stenson	2255
43	West Midlands	Grand Union	Lock 23, Radford Bottom	2239
44	West Midlands	Stratford	Lock 38, Preston Bagot	2162
45	London and South East	Lee Navigation	Lock 17, Tottenham Lock	2157
46	West Midlands	Staffordshire & Worcestershire	Lock 31, Compton	2145
47	Wales and South West	Kennet & Avon	Lock 13, Bath	2117
48	London and South East	Regents	Lock 2, Hawley	2089
49	London and South East	Hertford Union	Lock 1, Victoria Park Top	2084
50	North West	Shropshire Union	Lock 7, Tarvin	2036
51	West Midlands	Stratford	Lock 23, Lapworth	1983
52	London and South East	Grand Union	Lock 46, Cowroast	1939
53	Yorkshire and North East	Aire & Calder Navigation	Lock 13, Pollington	1938
54	East Midlands	Beeston Canal	Lock 6, Castle	1903
55	London and South East	Lee & Stort Navigation	Lock 10, Waltham Common	1898
56	West Midlands	Worcester & Birmingham	Lock 23, Stoke Prior	1895
57	London and South East	Grand Union	Lock 40, Marsworth	1876
58	West Midlands	Worcester & Birmingham	Lock 15, Offerton	1822
59	Wales and South West	Kennet & Avon	Lock 96, Padworth Middle	1812
60	Yorkshire and North East	Sheffield & South Yorkshire Navigation	Long Sandall Lock	1800
61	Yorkshire and North East	Sheffield & South Yorkshire Navigation	Sprotborough Lock	1796
62	North West	Macclesfield	Lock 1, Bosley Top	1793
63	West Midlands	Stratford	Lock 53, Maidenhead Road	1768

Rank	Waterway	Canal	Site	2023 Lockage
64	London and South East	Grand Union	Lock 81, Batchworth	1751
65	London and South East	Lee Navigation	Lock 19, Old Ford Lock	1742
66	West Midlands	Caldon	Lock 11, Hazelhurst Middle	1706
67	Yorkshire and North East	Aire & Calder Navigation	Lock 12, Whitley Lock	1693
68	West Midlands	Caldon	Lock 8, Road Lock	1674
69	North West	Leeds & Liverpool	Deep Lock, Inside Track (Appley)	1651
70	Yorkshire and North East	Aire & Calder Navigation	Lock 10, Bulholme	1644
71	London and South East	Lee & Stort Navigation	Lock 4, Stanstead	1599
72	Yorkshire and North East	Aire & Calder Navigation	Lock 2, Birkwood Lock	1574
73	Wales and South West	Kennet & Avon	Lock 78, Kintbury	1552
74	West Midlands	Worcester & Birmingham	Lock 2, Diglis	1519
75	West Midlands	Birmingham & Fazeley	Lock 1, Top Lock Curdworth	1503
76	Yorkshire and North East	Leeds & Liverpool	Lock 30, Holme Bridge	1498
77	London and South East	Oxford Canal	Lock 44A, Dukes Cut	1491
78	Wales and South West	Kennet & Avon	Lock 49, Maton	1465
79	Yorkshire and North East	Aire & Calder Navigation	Lock 5, Woodlesford Lock	1457
80	Wales and South West	Kennet & Avon	Lock 76, Wire	1452
81	Yorkshire and North East	Aire & Calder Navigation	Lock 7, Lemonroyd Lock	1446
82	Yorkshire and North East	New Junction Canal	Sykehouse Lock	1418
83	Yorkshire and North East	Aire & Calder Navigation	Lock 3, Kings Road Lock	1408
84	Yorkshire and North East	Leeds & Liverpool	Lock 36, Bank Newton	1326
85	Yorkshire and North East	Aire & Calder Navigation	Lock 6, Woodnook Lock	1312
86	West Midlands	Birmingham Canal Navigations	Lock 17, Wolverhampton	1281
87	Yorkshire and North East	Aire & Calder Navigation	Lock 4, Fishpond Lock	1271
88	North West	Leeds & Liverpool	Lock 1, Leigh Branch Top	1270
89	North West	Leeds & Liverpool	Lock 44, Greenberfield Top	1238
90	Yorkshire and North East	Leeds & Liverpool	Lock 29, Bingley 5 Rise Top	1219
91	Yorkshire and North East	Aire & Calder Navigation	Lock 3, Knostrop	1182
92	East Midlands	Grand Union	Lock 18, Kibworth	1176
93	Yorkshire and North East	Sheffield & South Yorkshire Navigation	Doncaster Lock	1176

Rank	Waterway	Canal	Site	2023 Lockage
94	Wales and South West	Kennet & Avon	Lock 51, Wootton Rivers	1160
95	West Midlands	Montgomery	Lock 3, Aston	1152
96	Yorkshire and North East	Sheffield & South Yorkshire Navigation	Mexborough Top Lock	1134
97	West Midlands	Stourbridge	Lock 4, Stourton Bottom	1124
98	Wales and South West	Kennet & Avon	Lock 105, Fobney	1076
99	Wales and South West	Gloucester & Sharpness	Lock 2, Gloucester	1056
100	London and South East	Lee & Stort Navigation	Lock 3, Roydon	1056
101	Yorkshire and North East	Aire & Calder Navigation	Lock 1, Leeds Lock	1033
102	London and South East	Grand Union	Lock 90, Hanwell flight (Norwood)	1029
103	West Midlands	Caldon	Lock 3, Planet	924
104	West Midlands	Grand Union	Lock 47, Knowle Bottom	890
105	London and South East	Regents	Lock 12, Commercial Road	806
106	London and South East	Grand Union	Lock 1, Aylesbury	802
107	Yorkshire and North East	Leeds & Liverpool	Lock 6, Spring Garden	786
108	London and South East	Lee & Stort Navigation	Lock 6, Sheering Mill	786
109	East Midlands	Grand Union	Lock 14, Northampton	775
110	West Midlands	Droitwich Canal	Lock 8, Ladywood	769
111	Yorkshire and North East	Sheffield & South Yorkshire Navigation	Swinton (Waddington) Lock	742
112	North West	Leeds & Liverpool	Lock 3, Runnel Brow	723
113	East Midlands	Grand Union	Lock 38, Kings	668
114	Yorkshire and North East	Sheffield & South Yorkshire Navigation	Aldwarke Lock	648
115	East Midlands	Erewash	Lock 61, Long Eaton	636
116	Yorkshire and North East	Sheffield & South Yorkshire Navigation	Eastwood (Sir Frank Price) lock	618
117	Yorkshire and North East	Rochdale	Lock 1, Albert Wood	578
118	Yorkshire and North East	River Ouse	Naburn Lock	569
119	North West	Leeds & Liverpool	Lock 51, Barrowford Bottom	566
120	North West	Ashton	Lock 2, Ancoats	543
121	North West	Leeds & Liverpool	Lock 45, Barrowford	520
122	North West	Leeds & Liverpool	Lock 55, Blackburn	482
123	North West	Shropshire Union	Ellesmere Port Wide & Narrow	469
124	Yorkshire and North East	Pocklington	Lock 8, Gardham	460

Rank	Waterway	Canal	Site	2023 Lockage
125	Yorkshire and North East	Chesterfield	Lock 61, Gringley	445
126	North West	Peak Forest	Lock 8, Marple	391
127	North West	Leeds & Liverpool	Lock 67, Wigan	337
128	East Midlands	Erewash	Lock 73, Eastwood	325
129	North West	Huddersfield Narrow	Lock 3W, Ashton	311
130	Yorkshire and North East	Sheffield & Tinsley Canal	Lock 1, Tinsley	278
131	North West	Huddersfield Narrow	Lock 12W, HNC	276
132	Yorkshire and North East	Huddersfield Broad	Lock 2, Colne Bridge	217
133	North West	Huddersfield Narrow	Lock 30W, Shaw Mill	207
134	London and South East	Old River Lea	Lock 1a, Carpenter's Road Lock	202
135	Yorkshire and North East	Chesterfield	Lock 51, Worksop Bracebridge	200
136	West Midlands	Birmingham Canal Navigations	Lock 2, Rushall	198
137	Yorkshire and North East	Huddersfield Narrow	Lock 41E, Marsden	196
138	North West	Rochdale	Lock 65, Alfred Street	191
139	North West	Rochdale	Lock 48, Lower Littleborough	184
140	North West	Lancaster	Lock 1, Lodgehill	182
141	North West	Lancaster	Lock 2, Ribble	164
142	Wales and South West	Gloucester & Sharpness	Sharpness Lock	160
143	Yorkshire and North East	Huddersfield Narrow	Lock 28E, HNC	149
144	Yorkshire and North East	Huddersfield Narrow	Lock 1E, Stanley Dawson	123
145	Yorkshire and North East	Chesterfield	Lock 34, Double Bottom Turnerwood	59
146	West Midlands	Montgomery	Lock 1, Belan	56
147	North West	Shropshire Union	Lock 1, Graving	21

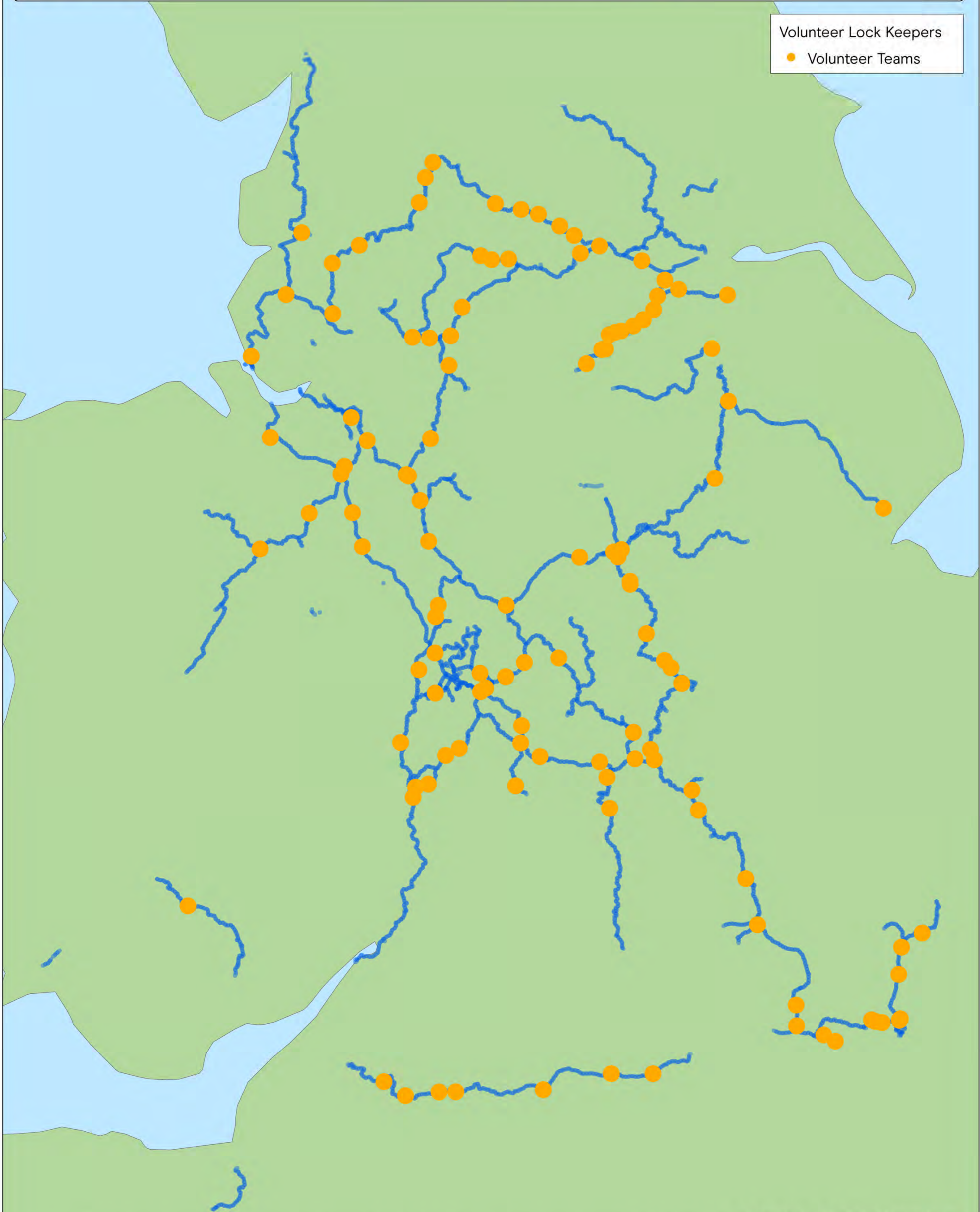
Volunteer Lock Keeper Sites 2023

In 2023 there were 121 registered Volunteer Lock Keeper sites, the locations of these are shown in the map. Together, they recorded 207,411 hours of Lock Keeping across the Trust's waterways

Volunteer Lock Keepers



Volunteer Lock Keepers
● Volunteer Teams



Annual Lockage Report 2023

Comparison Sites

Produced: January 2024

Region: East Midlands

Canal: Beeston Canal

Site	Type	NGR	Annual Lockage Totals			Annual Change		
			2021	2022	2023			
Lock 6, Castle	Telemetry	SK 570393	2126	2356	1903	-453	-19%	
Summary stats for Beeston Canal			Avg:	2126	2356	1903	-453	-19%

Canal: Erewash

Site	Type	NGR	Annual Lockage Totals			Annual Change		
			2021	2022	2023			
Lock 61, Long Eaton	Telemetry	SK 488335	473	508	636	128	25%	
Lock 73, Eastwood	Telemetry	SK 460458	351	303	325	22	7%	
Summary stats for Erewash			Avg:	412	406	481	75	18%

Canal: Grand Union

Site	Type	NGR	Annual Lockage Totals			Annual Change		
			2021	2022	2023			
Lock 1, Watford	Telemetry	SP 593689	3868	4059	4230	171	4%	
Lock 1, Welford	Telemetry	SP 639813	3189	3768	3154	-614	-16%	
Lock 14, Northampton	Telemetry	SP 724581	748	782	775	-7	-1%	
Lock 18, Kibworth	Telemetry	SP 657944	1241	1389	1176	-213	-15%	
Lock 21, Cosgrove	Telemetry	SP 795422	3842	3685	3546	-139	-4%	
Lock 38, Kings	Telemetry	SK 567007	818	932	668	-264	-28%	
Lock 6, Braunston	Telemetry	SP 553657	4651	5045	4754	-291	-6%	
Lock 7, Buckby Top	Telemetry	SP 605656	3748	3815	3647	-168	-4%	
Lock 9, Foxton	Telemetry	SP 691894	3440	4211	3266	-945	-22%	
Summary stats for Grand Union			Avg:	2838	3076	2802	-274	-9%

Canal: Trent & Mersey

Site	Type	NGR	Annual Lockage Totals			Annual Change		
			2021	2022	2023			
Lock 1, Derwent Mouth	Telemetry	SK 455306	2593	2927	2314	-613	-21%	
Lock 6, Stenson	Telemetry	SK 325299	2641	2522	2255	-267	-11%	
Summary stats for Trent & Mersey			Avg:	2617	2725	2285	-440	-16%

Summary stats for East Midlands

Avg:

2409

2593

2332

-261

-10%

Region: London and South East

Canal: Grand Union

Site	Type	NGR	Annual Lockage Totals			Annual Change	
			2021	2022	2023		
Lock 1, Aylesbury	Telemetry	SP 917143	957	769	802	33	4%
Lock 40, Marsworth	Telemetry	SP 922193		1909	1876	-33	-2%
Lock 46, Cowroast	Telemetry	SP 958103	1486	1913	1939	26	1%
Lock 81, Batchworth	Telemetry	TQ 062940	1826	2222	1751	-471	-21%
Lock 90, Hanwell flight (Norwood)	Telemetry	TQ 136793	1470	1450	1029	-421	-29%

Summary stats for Grand Union Avg: 1435 1653 1479 -173 -10%

Canal: Hertford Union

Site	Type	NGR	Annual Lockage Totals			Annual Change	
			2021	2022	2023		
Lock 1, Victoria Park Top	Telemetry	TQ 367839	1691	1789	2084	295	16%

Summary stats for Hertford Union Avg: 1691 1789 2084 295 16%

Canal: Lee & Stort Navigation

Site	Type	NGR	Annual Lockage Totals			Annual Change		
			2021	2022	2023			
Lock 10, Waltham Common	Telemetry	TL 370018		2070	1898	-172	-8%	
Lock 3, Roydon	Telemetry	TL 410104	1176	1133	1056	-77	-7%	
Lock 4, Stanstead	Telemetry	TL 380121	1557	1733	1599	-134	-8%	
Lock 6, Sheering Mill	Telemetry	TL 488144	990	896	786	-110	-12%	
Summary stats for Lee & Stort Navigation			Avg:	1241	1458	1335	-123	-8%

Canal: Lee Navigation

Site	Type	NGR	Annual Lockage Totals			Annual Change		
			2021	2022	2023			
Lock 17, Tottenham Lock	Telemetry	TQ 347895	2305	2211	2157	-54	-2%	
Lock 19, Old Ford Lock	Telemetry	TQ 373840	1725	1963	1742	-221	-11%	
Summary stats for Lee Navigation			Avg:	2015	2087	1950	-138	-7%

Canal: Old River Lea

Site	Type	NGR	Annual Lockage Totals			Annual Change		
			2021	2022	2023			
Lock 1a, Carpenter's Road Lock	Telemetry	TQ 376844	78	150	202	52	35%	
Summary stats for Old River Lea			Avg:	78	150	202	52	35%

Canal: Oxford Canal

Site	Type	NGR	Annual Lockage Totals			Annual Change		
			2021	2022	2023			
Lock 21, Claydon Bottom	Telemetry	SP 463505	4973	4590	4686	96	2%	
Lock 32, Nell Bridge	Telemetry	SP 494343	3824	3503	3513	10	0%	
Lock 40, Bakers	Telemetry	SP 479178	3652	3439	3191	-248	-7%	
Lock 42, Roundham	Telemetry	SP 483140	3260	3142	2968	-174	-6%	
Lock 44, Dukes	Telemetry	SP 488107	3372	3091	2949	-142	-5%	
Lock 44A, Dukes Cut	Telemetry	SP 488106	1705	1743	1491	-252	-14%	
Lock 46, Isis	Telemetry	SP 505066	3404	3218	2763	-455	-14%	
Summary stats for Oxford Canal			Avg:	3456	3247	3080	-166	-5%

Canal: Regents

Site	Type	NGR	Annual Lockage Totals			Annual Change		
			2021	2022	2023			
Lock 12, Commercial Road	Telemetry	TQ 363811	873	1070	806	-264	-25%	
Lock 2, Hawley	Telemetry	TQ 287841	1946	2250	2089	-161	-7%	
Summary stats for Regents			Avg:	1410	1660	1448	-213	-13%
Summary stats for London and South East			Avg:	2114	2102	1972	-131	-6%

Region: North West

Canal: Ashton

Site	Type	NGR	Annual Lockage Totals			Annual Change		
			2021	2022	2023			
Lock 2, Ancoats	Telemetry	SJ 854982	530	391	543	152	39%	
Summary stats for Ashton			Avg:	530	391	543	152	39%

Canal: Huddersfield Narrow

Site	Type	NGR	Annual Lockage Totals			Annual Change		
			2021	2022	2023			
Lock 12W, HNC	Telemetry	SD 975012	311	181	276	95	52%	
Lock 30W, Shaw Mill	Telemetry	SE 001069	344	151	207	56	37%	
Lock 3W, Ashton	Telemetry	SJ 948985	375	186	311	125	67%	
Summary stats for Huddersfield Narrow			Avg:	343	173	265	92	53%

Canal: Lancaster

Site	Type	NGR	Annual Lockage Totals			Annual Change		
			2021	2022	2023			
Lock 1, Lodgehill	Telemetry	SD 481545	246	214	182	-32	-15%	
Lock 2, Ribble	Telemetry	SD 509311	190	156	164	8	5%	
Summary stats for Lancaster			Avg:	218	185	173	-12	-6%

Canal: Leeds & Liverpool

Site	Type	NGR	Annual Lockage Totals			Annual Change
			2021	2022	2023	
Deep Lock, Inside Track (Appley)	Telemetry	SD 517096	1422	1403	1651	248 18%
Lock 1, Leigh Branch Top	Telemetry	SD 578044	1348	927	1270	343 37%
Lock 3, Runnel Brow	Telemetry	SD 453118		721	723	2 0%
Lock 44, Greenberfield Top	Telemetry	SD 889484	1422	573	1238	665 116%
Lock 45, Barrowford	Telemetry	SD 868403	861	445	520	75 17%
Lock 51, Barrowford Bottom	Telemetry	SD 868403	828	462	566	104 23%
Lock 55, Blackburn	Telemetry	SD 680269	608	342	482	140 41%
Lock 67, Wigan	Telemetry	SD 606065	443	264	337	73 28%

Summary stats for Leeds & Liverpool Avg: 990 642 848 206 32%

Canal: Llangollen

Site	Type	NGR	Annual Lockage Totals			Annual Change
			2021	2022	2023	
Marbury Lock	Telemetry	SJ 561464	5033	5316	4957	-359 -7%

Summary stats for Llangollen Avg: 5033 5316 4957 -359 -7%

Canal: Macclesfield

Site	Type	NGR	Annual Lockage Totals			Annual Change		
			2021	2022	2023			
Lock 1, Bosley Top	Telemetry	SJ 904666	2229	845	1793	948	112%	
Summary stats for Macclesfield			Avg:	2229	845	1793	948	112%

Canal: Peak Forest

Site	Type	NGR	Annual Lockage Totals			Annual Change		
			2021	2022	2023			
Lock 8, Marple	Telemetry	SJ 962884	842	421	391	-30	-7%	
Summary stats for Peak Forest			Avg:	842	421	391	-30	-7%

Canal: Rochdale

Site	Type	NGR	Annual Lockage Totals			Annual Change		
			2021	2022	2023			
Lock 48, Lower Littleborough	Telemetry	SD 940163	199	166	184	18	11%	
Lock 65, Alfred Street	Telemetry	SD 896017	233	232	191	-41	-18%	
Summary stats for Rochdale			Avg:	216	199	188	-12	-6%

Canal: Shropshire Union

Site	Type	NGR	Annual Lockage Totals			Annual Change		
			2021	2022	2023			
Ellesmere Port Wide & Narrow	Telemetry	SJ 405771	421	575	469	-106	-18%	
Lock 1, Graving	Telemetry	SJ 399667	66	56	21	-35	-63%	
Lock 1, Wardle	Telemetry	SJ 705657	5972	2860	4281	1421	50%	
Lock 3, Audlem	Telemetry	SJ 658420	3880	4297	3829	-468	-11%	
Lock 4, Cholmondeston	Telemetry	SJ 633575	7103	7414	6830	-584	-8%	
Lock 7, Tarvin	Telemetry	SJ 427665	1556	2265	2036	-229	-10%	
Summary stats for Shropshire Union			Avg:	3166	2911	2911	0	0%

Canal: Trent & Mersey

Site	Type	NGR	Annual Lockage Totals			Annual Change		
			2021	2022	2023			
Lock 42, Limekiln	Telemetry	SJ 830548	2900	1767	2695	928	53%	
Lock 71, Kings	Telemetry	SJ 706656	3745	2480	3661	1181	48%	
Lock 75, Big Lock	Telemetry	SJ 701669	3812	3918	3732	-186	-5%	
Summary stats for Trent & Mersey			Avg:	3486	2722	3363	641	24%
Summary stats for North West			Avg:	1738	1394	1555	161	12%

Region:

Wales and South West

Canal: Gloucester & Sharpness

Site	Type	NGR	Annual Lockage Totals			Annual Change	
			2021	2022	2023		
Lock 2, Gloucester	Manual Reading	SO 827184	1313	461	1056	595	129%
Sharpness Lock	Manual Reading	SO 670022	258	186	160	-26	-14%
Summary stats for Gloucester & Sharpness		Avg:	786	324	608	285	88%

Canal: Kennet & Avon

Site	Type	NGR	Annual Lockage Totals			Annual Change		
			2021	2022	2023			
Lock 105, Fobney	Telemetry	SU 705710	1192	1408	1076	-332	-24%	
Lock 13, Bath	Telemetry	ST 758646	2169	2313	2117	-196	-8%	
Lock 14, Bradford on Avon	Telemetry	ST 825602	5994	6120	6183	63	1%	
Lock 15, Semington	Telemetry	ST 901609	3443	3371	3289	-82	-2%	
Lock 49, Maton	Telemetry	ST 995617	1646	1595	1465	-130	-8%	
Lock 51, Wootton Rivers	Telemetry	SU 199629	1978	1643	1160	-483	-29%	
Lock 76, Wire	Telemetry	SU 362681	1552	1666	1452	-214	-13%	
Lock 78, Kintbury	Telemetry	SU 385671		1912	1552	-360	-19%	
Lock 96, Padworth Middle	Telemetry	SU 606671	1963	2172	1812	-360	-17%	
Summary stats for Kennet & Avon			Avg:	2492	2467	2234	-233	-9%

Canal: Monmouthshire & Brecon

Site	Type	NGR	Annual Lockage Totals			Annual Change		
			2021	2022	2023			
Lock 65, Coombes	Telemetry	SO 144197	3341	2827	2399	-428	-15%	
Lock 69, Brynich	Telemetry	SO 077273	2910	2645	2359	-286	-11%	
Summary stats for Monmouthshire & Brecon			Avg:	3126	2736	2379	-357	-13%

Summary stats for Wales and South West

Avg:

2313

2178

2006

-172

-8%

Region: West Midlands

Canal: Birmingham & Fazeley

Site	Type	NGR	Annual Lockage Totals			Annual Change	
			2021	2022	2023		
Lock 1, Top Lock Curdworth	Telemetry	SP 183937	1639	1770	1503	-267	-15%
Summary stats for Birmingham & Fazeley		Avg:	1639	1770	1503	-267	-15%

Canal: Birmingham Canal Navigations

Site	Type	NGR	Annual Lockage Totals			Annual Change	
			2021	2022	2023		
Lock 17, Wolverhampton	Telemetry	SO 918993	1480	770	1281	511	66%
Lock 2, Rushall	Telemetry	SP 039989	165	112	198	86	77%
Summary stats for Birmingham Canal Navigations		Avg:	823	441	740	299	68%

Canal: Caldon

Site	Type	NGR	Annual Lockage Totals			Annual Change	
			2021	2022	2023		
Lock 11, Hazelhurst Middle	Telemetry	SJ 948538	2042	779	1706	927	119%
Lock 3, Planet	Manual Reading	SJ 878464	2311	1245	924	-321	-26%
Lock 8, Road Lock	Telemetry	SJ 916519	2064	689	1674	985	143%
Summary stats for Caldon		Avg:	2139	904	1435	530	59%

Canal: Coventry & Ashby

Site	Type	NGR	Annual Lockage Totals			Annual Change		
			2021	2022	2023			
Lock 12, Glascote Top	Telemetry	SK 216033	4613	4421	3408	-1013	-23%	
Lock 7, Baddesley Basin	Telemetry	SP 298984	1558	1789	4574	2785	156%	
Summary stats for Coventry & Ashby			Avg:	3086	3105	3991	886	29%

Canal: Droitwich Canal

Site	Type	NGR	Annual Lockage Totals			Annual Change		
			2021	2022	2023			
Lock 8, Ladywood	Telemetry	SO 868610	972	996	769	-227	-23%	
Summary stats for Droitwich Canal			Avg:	972	996	769	-227	-23%

Canal: Grand Union

Site	Type	NGR	Annual Lockage Totals			Annual Change		
			2021	2022	2023			
Lock 1, Calcutt	Telemetry	SP 468633	5100	5344	4834	-510	-10%	
Lock 23, Radford Bottom	Telemetry	SP 352649	2625	2627	2239	-388	-15%	
Lock 47, Knowle Bottom	Telemetry	SP 190760	1027	1008	890	-118	-12%	
Pumping Station 2, Stockton	Telemetry	SP 426647	2695	2684	2307	-377	-14%	
Summary stats for Grand Union			Avg:	2862	2916	2568	-348	-12%

Canal: Llangollen

Site	Type	NGR	Annual Lockage Totals			Annual Change		
			2021	2022	2023			
Lock 2, New Marton	Telemetry	SJ 331343	7457	7180	7264	84	1%	
Summary stats for Llangollen			Avg:	7457	7180	7264	84	1%

Canal: Montgomery

Site	Type	NGR	Annual Lockage Totals			Annual Change		
			2021	2022	2023			
Lock 1, Belan	Telemetry	SJ 217054	46	59	56	-3	-5%	
Lock 3, Aston	Telemetry	SJ 335264	1264	1050	1152	102	10%	
Summary stats for Montgomery			Avg:	655	555	604	50	9%

Canal: Oxford Canal

Site	Type	NGR	Annual Lockage Totals			Annual Change		
			2021	2022	2023			
Lock 15, Marston Doles	Telemetry	SP 464582	5382	4682	5034	352	8%	
Lock 8, Napton Bottom	Telemetry	SP 458592	5562	4728	4533	-195	-4%	
Locks 2&3, Hillmorton	Telemetry	SP 537745	8147	7734	7582	-152	-2%	
Summary stats for Oxford Canal			Avg:	6364	5715	5716	2	0%

Canal: Shropshire Union

Site	Type	NGR	Annual Lockage Totals			Annual Change		
			2021	2022	2023			
Wheaton Aston Lock	Telemetry	SJ 858126	4964	5260	4852	-408	-8%	
Summary stats for Shropshire Union			Avg:	4964	5260	4852	-408	-8%

Canal: Staffordshire & Worcestershire

Site	Type	NGR	Annual Lockage Totals			Annual Change		
			2021	2022	2023			
Lock 31, Compton	Telemetry	SO 884989	2760	2755	2145	-610	-22%	
Lock 33, Brick Kiln	Telemetry	SJ 922107	4719	4907	4539	-368	-7%	
Lock 43, Tixall	Telemetry	SJ 978219	5732	5835	5655	-180	-3%	
York Street	Telemetry	SO 812712	3258	3253	2531	-722	-22%	
Summary stats for Staffordshire & Worcestershire			Avg:	4117	4188	3718	-470	-11%

Canal: Stourbridge

Site	Type	NGR	Annual Lockage Totals			Annual Change		
			2021	2022	2023			
Lock 4, Stourton Bottom	Telemetry	SO 862851	1220	1342	1124	-218	-16%	
Summary stats for Stourbridge			Avg:	1220	1342	1124	-218	-16%

Canal: Stratford

Site	Type	NGR	Annual Lockage Totals			Annual Change		
			2021	2022	2023			
Lock 23, Lapworth	Telemetry	SP 186705	2303	2240	1983	-257	-11%	
Lock 38, Preston Bagot	Telemetry	SP 175654	2693	2570	2162	-408	-16%	
Lock 53, Maidenhead Road	Telemetry	SP 201553	1971	1930	1768	-162	-8%	
Summary stats for Stratford			Avg:	2322	2247	1971	-276	-12%

Canal: Trent & Mersey

Site	Type	NGR	Annual Lockage Totals			Annual Change		
			2021	2022	2023			
Lock 11, Wychnor	Telemetry	SK 185161	4881	5199	4596	-603	-12%	
Lock 12, Alrewas	Telemetry	SK 171154	4457	5060	4616	-444	-9%	
Lock 27, Star	Telemetry	SJ 902336	4626	3459	4383	924	27%	
Lock 37, Cockshutes	Telemetry	SJ 874461	4012	2842	3976	1134	40%	
Lock 40, Summit (Etruria)	Telemetry	SJ 872465		3695	4571	876	24%	
Summary stats for Trent & Mersey			Avg:	4494	4051	4428	377	9%

Canal: Worcester & Birmingham

Annual Lockage Totals

Site	Type	NGR	2021	2022	2023	Annual Change
Lock 15, Offerton	Telemetry	SO 895580	2200	2004	1822	-182 -9%
Lock 2, Diglis	Telemetry	SO 849539	1882	1770	1519	-251 -14%
Lock 23, Stoke Prior	Telemetry	SO 951670	2128	1652	1895	243 15%
Summary stats for Worcester & Birmingham		Avg:	2070	1809	1745	-63 -4%
Summary stats for West Midlands		Avg:	3142	2929	2946	17 1%

Region: **Yorkshire and North East**

Canal: **Aire & Calder Navigation**

Site	Type	NGR	Annual Lockage Totals			Annual Change	
			2021	2022	2023		
Lock 1, Leeds Lock	Telemetry	SE 437424	1080	1138	1033	-105	-9%
Lock 10, Bulholme	Telemetry	SD 433267	1277	1952	1644	-308	-16%
Lock 12, Whitley Lock	Telemetry	SE 566221	1251	1834	1693	-141	-8%
Lock 13, Pollington	Telemetry	SE 615192	911	1999	1938	-61	-3%
Lock 2, Birkwood Lock	Telemetry	SE 435424	1382	1683	1574	-109	-6%
Lock 3, Kings Road Lock	Telemetry	SE 437424	1552	1506	1408	-98	-7%
Lock 3, Knostrop	Telemetry	SE 432431	1470	1400	1182	-218	-16%
Lock 4, Fishpond Lock	Telemetry	SE 435430	1627	1338	1271	-67	-5%
Lock 5, Woodlesford Lock	Telemetry	SE 436429	1693	1463	1457	-6	0%
Lock 6, Woodhook Lock	Telemetry	SE 439435	1420	1597	1312	-285	-18%
Lock 7, Lemonroyd Lock	Telemetry	SE 438427	1553	1640	1446	-194	-12%

Summary stats for Aire & Calder Navigation

Avg: 1383 1595 1451 -145 -9%

Canal: Chesterfield

Site	Type	NGR	Annual Lockage Totals			Annual Change	
			2021	2022	2023		
Lock 34, Double Bottom Turnerwood	Telemetry	SK 542813	148	133	59	-74 -56%	
Lock 51, Worksop Bracebridge	Telemetry	SK 595791	312	275	200	-75 -27%	
Lock 61, Gringley	Telemetry	SK 728916	463	566	445	-121 -21%	
Summary stats for Chesterfield			Avg:	308	325	235	-90 -28%

Canal: Huddersfield Broad

Site	Type	NGR	Annual Lockage Totals			Annual Change	
			2021	2022	2023		
Lock 2, Colne Bridge	Telemetry	SE 176202	379	249	217	-32 -13%	
Summary stats for Huddersfield Broad			Avg:	379	249	217	-32 -13%

Canal: Huddersfield Narrow

Site	Type	NGR	Annual Lockage Totals			Annual Change	
			2021	2022	2023		
Lock 1E, Stanley Dawson	Telemetry	SE 148162	188	64	123	59 92%	
Lock 28E, HNC	Telemetry	SE 065131	279	101	149	48 48%	
Lock 41E, Marsden	Telemetry	SE 048118	321	122	196	74 61%	
Summary stats for Huddersfield Narrow			Avg:	263	96	156	60 63%

Canal: Leeds & Liverpool

Site	Type	NGR	Annual Lockage Totals			Annual Change
			2021	2022	2023	
Lock 29, Bingley 5 Rise Top	Telemetry	SE 107399	1281	1095	1219	124 11%
Lock 30, Holme Bridge	Telemetry	SD 943544	1702	563	1498	935 166%
Lock 36, Bank Newton	Telemetry	SD 911529	1412	584	1326	742 127%
Lock 6, Spring Garden	Telemetry	SE 284337	896	610	786	176 29%

Summary stats for Leeds & Liverpool			Avg:	1323	713	1207	494	69%
--	--	--	-------------	-------------	------------	-------------	------------	------------

Canal: New Junction Canal

Site	Type	NGR	Annual Lockage Totals			Annual Change
			2021	2022	2023	
Sykehouse Lock	Telemetry	SE 463416	673	1492	1418	-74 -5%

Summary stats for New Junction Canal			Avg:	673	1492	1418	-74	-5%
---	--	--	-------------	------------	-------------	-------------	------------	------------

Canal: Pocklington

Site	Type	NGR	Annual Lockage Totals			Annual Change
			2021	2022	2023	
Lock 8, Gardham	Telemetry	SE 729453	138	268	460	192 72%

Summary stats for Pocklington			Avg:	138	268	460	192	72%
--------------------------------------	--	--	-------------	------------	------------	------------	------------	------------

Canal: Rochdale

Site	Type	NGR	Annual Lockage Totals			Annual Change	
			2021	2022	2023		
Lock 1, Albert Wood	Telemetry	SE 064236	697	352	578	226	64%
Summary stats for Rochdale		Avg:	697	352	578	226	64%

Canal: Sheffield & South Yorkshire Navigation

Site	Type	NGR	Annual Lockage Totals			Annual Change	
			2021	2022	2023		
Aldwarke Lock	Telemetry	SK 451943	531	659	648	-11	-2%
Doncaster Lock	Telemetry	SE 570035	1013	1044	1176	132	13%
Eastwood (Sir Frank Price) lock	Telemetry	SK 440942	515	646	618	-28	-4%
Long Sandall Lock	Manual Reading	SE 602066	1359	1680	1800	120	7%
Mexborough Top Lock	Telemetry	SK 481996	859	1018	1134	116	11%
Sprotborough Lock	Telemetry	SE 539016	974	1180	1796	616	52%
Swinton (Waddington) Lock	Telemetry	SK 463989	723	757	742	-15	-2%
Summary stats for Sheffield & South Yorkshire Navigation		Avg:	853	998	1131	133	13%

Canal: Sheffield & Tinsley Canal

Annual Lockage Totals

Site	Type	NGR	2021	2022	2023	Annual Change
Lock 1, Tinsley	Telemetry	SK 392898	291	311	278	-33 -11%
Summary stats for Sheffield & Tinsley Canal		Avg:	291	311	278	-33 -11%
Summary stats for Yorkshire and North East		Avg:	920	949	995	46 5%

Boat Movement Report 2023

Comparison Sites

Produced: January 2024

Region: East Midlands

Canal: Trent Navigation

Site	Type	NGR	Annual Boat Movement Totals			Annual Change	
			2021	2022	2023		
Cranfleet Lock	Manual Reading	SK 501315		1676	1267	-409	-24%
Sawley Lock	Manual Reading	SK 447330		5640	4215	-1425	-25%
Summary stats for Trent Navigation			Avg:	3658	2741	-917	-25%
Summary stats for East Midlands			Avg:	3658	2741	-917	-25%

Region: West Midlands

Canal: Coventry & Ashby

Site	Type	NGR	Annual Boat Movement Totals			Annual Change		
			2021	2022	2023			
Congerstone Bridge 1 & 2	Telemetry	SK 371050	4362	3621	3765	144	4%	
Summary stats for Coventry & Ashby			Avg:	4362	3621	3765	144	4%
Summary stats for West Midlands			Avg:	4362	3621	3765	144	4%

Region: East Midlands

Canal: Fosdyke & Witham

Site	Type	NGR	<u>Annual Boat Movement Totals</u>			Annual Change		
			2021	2022	2023			
Lock 1, Torksey	Manual Reading	SK 837780	1362	1381	1273	-108	-8%	
Summary stats for Fosdyke & Witham			Avg:	1362	1381	1273	-108	-8%

Canal: River Witham

Site	Type	NGR	<u>Annual Boat Movement Totals</u>			Annual Change		
			2021	2022	2023			
Boston Lock	Manual Reading	TF 323445	214	219	173	-46	-21%	
Summary stats for River Witham			Avg:	214	219	173	-46	-21%

Canal: Trent Navigation

Site	Type	NGR	Annual Boat Movement Totals			Annual Change		
			2021	2022	2023			
Lock 10, Stoke	Manual Reading	SK 649407	1508	1474	1305	-169	-11%	
Lock 11, Gunthorpe	Manual Reading	SK 688437	2038	2078	1843	-235	-11%	
Lock 12, Hazelford	Manual Reading	SK 732494	2652	2254	1829	-425	-19%	
Lock 13, Newark Town	Manual Reading	SK 794538	2214	2641	2224	-417	-16%	
Lock 14, Newark Nether	Manual Reading	SK 800554	1387	1298	1394	96	7%	
Lock 15, Cromwell	Manual Reading	SK 808611		1574	1411	-163	-10%	
Lock 8, Holme	Manual Reading	SK 615393	1518	1479	1284	-195	-13%	
Summary stats for Trent Navigation			Avg:	1886	1828	1613	-215	-12%
Summary stats for East Midlands			Avg:	1612	1600	1415	-185	-12%

Region: North West

Canal: Rochdale

Site	Type	NGR	Annual Boat Movement Totals			Annual Change
			2021	2022	2023	
Bridge 51, Ben Healey Bridge	Telemetry	SD 937161	43	150	45	-105 -70%
Summary stats for Rochdale		Avg:	43	150	45	-105 -70%
Summary stats for North West		Avg:	43	150	45	-105 -70%

Region: Yorkshire and North East

Canal: Chesterfield

Site	Type	NGR	Annual Boat Movement Totals			Annual Change		
			2021	2022	2023			
Lock 65, Stockwith	Manual Reading	SK 785946	673	758	677	-81	-11%	
Summary stats for Chesterfield			Avg:	673	758	677	-81	-11%

Canal: River Ouse

Site	Type	NGR	Annual Boat Movement Totals			Annual Change		
			2021	2022	2023			
Naburn Lock	Manual Reading	SE 594445	410	758	569	-189	-25%	
Summary stats for River Ouse			Avg:	410	758	569	-189	-25%

Canal: Selby

Site	Type	NGR	Annual Boat Movement Totals			Annual Change		
			2021	2022	2023			
Lock 1, Selby	Manual Reading	SE 622322	227	494	453	-41	-8%	
Summary stats for Selby			Avg:	227	494	453	-41	-8%

Summary stats for Yorkshire and North East			Avg:	437	670	566	-104	-15%
--	--	--	------	-----	-----	-----	------	------

Region: London and South East

Canal: London Docklands

Site	Type	NGR	<u>Annual Boat Movement Totals</u>			Annual Change	
			2021	2022	2023		
West India Dock Lock Entrance	Manual Reading	TQ 381799		186	149	-37	-20%
Summary stats for London Docklands		Avg:		186	149	-37	-20%
Summary stats for London and South East		Avg:		186	149	-37	-20%

Appendix

Incomplete Data Sites 2023

For lockage data sites to be included in the main body of the report, the sites are required to be operational and have a good quality of data for both 2022 and 2023 (the comparison years). Incomplete sites within this Appendix are primarily those lockage sites where data was of insufficient quality for 2022 and/or 2023.

Region: London and South East

Canal: Grand Union

Site	Type	NGR	Annual Lockage Totals			Comments
			2021	2022	2023	
Lock 37, Stalkies	Telemetry	SP 924153	2204	2201		Technical issues, poor quality data

Canal: Lee & Stort Navigation

Site	Type	NGR	Annual Lockage Totals			Comments
			2021	2022	2023	
Lock 14, Ponders End 1 & 2	Telemetry	TQ 364955	3482			Technical issues, poor quality data
Lock 16, Stonebridge	Telemetry	TQ 351904	4413			Technical issues, poor quality data

Region: North West

Canal: Ashton

Site	Type	NGR	Annual Lockage Totals			Comments
			2021	2022	2023	
Lock 17, Droylsden	Telemetry	SJ 898978	560	373	Technical issues, poor quality data	

Canal: Huddersfield Narrow

Site	Type	NGR	Annual Lockage Totals			Comments
			2021	2022	2023	
Lock 22W, Upper Mill	Telemetry	SD 996058	364	225	Technical issues, site failed	

Canal: Lancaster

Site	Type	NGR	Annual Lockage Totals			Comments
			2021	2022	2023	
Lock 7, Glasson Basin	Manual Reading	SD 445561	108	107	Suspect data	

Canal: Leeds & Liverpool

Site	Type	NGR	Annual Lockage Totals			Comments
			2021	2022	2023	
Lock 58, Johnson's Hillock Top	Telemetry	SD 596213	694		631	Site repaired
Stanley Lock	Manual Reading	SJ 342921			988	Technical issues

Canal: Llangollen

Site	Type	NGR	Annual Lockage Totals			Comments
			2021	2022	2023	
Lock 1, Hurlleston	Telemetry	SJ 625553	5265	5779		Technical issues, site failed

Canal: Rochdale

Site	Type	NGR	Annual Lockage Totals			Comments
			2021	2022	2023	
Lock 49, Rochdale	Telemetry	SD 905124	171		170	Site repaired
Lock 79, Coal Pit Middle	Telemetry	SJ 858991	179		177	Site repaired
Lock 92, Castlefield Dukes	Telemetry	SJ 831975	406		515	Site repaired

Region: Wales and South West

Canal: Kennet & Avon

Site	Type	NGR	Annual Lockage Totals			Comments
			2021	2022	2023	
Lock 21, Seend	Telemetry	ST 933613	3325		2912	Site repaired
Lock 60, Crofton	Telemetry	SU 248622	1448	1342		Old station de-commissioned
Lock 71, Picketsfield	Telemetry	SU 316680				Technical issues, site failed
Lock 85, Newbury	Telemetry	SU 470671			1746	Site repaired

Region: **West Midlands**

Canal: **Birmingham & Fazeley**

Site	Type	NGR	Annual Lockage Totals			Comments
			2021	2022	2023	
Lock 3, Minworth	Telemetry	SP 152923	1517		1270	Site repaired

Canal: **Birmingham Canal Navigations**

Site	Type	NGR	Annual Lockage Totals			Comments
			2021	2022	2023	
Lock 2, Farmers Bridge	Telemetry	SP 062870	1206			Technical issues, site failed

Canal: **Caldon**

Site	Type	NGR	Annual Lockage Totals			Comments
			2021	2022	2023	
Lock 1, Bedford Street	Telemetry	SJ 873468			1737	Site repaired

Canal: Coventry & Ashby

Site	Type	NGR	Annual Lockage Totals			Comments
			2021	2022	2023	
Lock 1, Atherstone Top	Telemetry	SP 303976	4878	2207		Technical issues, site failed

Canal: Droitwich Canal

Site	Type	NGR	Annual Lockage Totals			Comments
			2021	2022	2023	
Lock 7, River	Telemetry	SO 906633	750		1102	Technical issues, poor quality data

Canal: Grand Union

Site	Type	NGR	Annual Lockage Totals			Comments
			2021	2022	2023	
Lock 3, Camp Hill	Telemetry	SP 085859	1016	1063		Technical issues, poor quality data
Lock 46, Hatton Top	Telemetry	SP 239669			1760	Site repaired

Canal: Montgomery

Site	Type	NGR	Annual Lockage Totals			Comments
			2021	2022	2023	
Lock 4, Frankton	Telemetry	SJ 369316				Technical issues, poor quality data
Pool Quay Lock	Telemetry	SJ 256115	444			Technical issues, poor quality data

Canal: Shropshire Union

Site	Type	NGR	Annual Lockage Totals			Comments
			2021	2022	2023	
Tyrley Lock	Manual Reading	SJ 689328			5380	Site repaired

Canal: Staffordshire & Worcestershire

Site	Type	NGR	Annual Lockage Totals			Comments
			2021	2022	2023	
Lock 28, Dimmingsdale	Telemetry	SO 858959				Technical issues, site failed

Canal: Stourbridge

Site	Type	NGR	Annual Lockage Totals			Comments
			2021	2022	2023	
Blowers Green	Telemetry	SO 934887	790	850		Technical issues, site failed

Canal: Stratford

Site	Type	NGR	Annual Lockage Totals			Comments
			2021	2022	2023	
Lock 19, Lapworth	Telemetry	SP 186705	2157	2159		Technical issues, site failed
Lock 2, Lapworth	Telemetry	SP 165716				Technical issues, site failed
Lock 40, Wilmcote Top	Telemetry	SP 171575	2060	2034		Technical issues, site failed
Lock 56, River	Telemetry	SP 204548	2093	2482		Technical issues, site failed

Canal: Trent & Mersey

Site	Type	NGR	Annual Lockage Totals			Comments
			2021	2022	2023	
Lock 20, Woodend	Telemetry	SK 127135	6279	6599		Technical issues, site failed
Lock 21, Colwich	Telemetry	SK 008212	5698		7202	Site repaired
Lock 35, Trentham	Telemetry	SJ 884398	4001			Technical issues, poor quality data

Canal: Worcester & Birmingham

Site	Type	NGR	Annual Lockage Totals			Comments
			2021	2022	2023	
Lock 42, Tardebigge	Telemetry	SO 975682	1644	1649		Technical issues, site failed

Region: Yorkshire and North East

Canal: Calder & Hebble Navigation

Site	Type	NGR	Annual Lockage Totals			Comments
			2021	2022	2023	
Lock 5, Woodside Mills	Telemetry	SE 101213	716		365	Site repaired

Canal: Chesterfield

Site	Type	NGR	Annual Lockage Totals			Comments
			2021	2022	2023	
Lock 56, Forest Middle	Telemetry	SK 668830	489		316	Site repaired

Canal: Huddersfield Narrow

Site	Type	NGR	Annual Lockage Totals			Comments
			2021	2022	2023	
Lock 16E, Westwood	Telemetry	SE 098149	306		160	Site repaired

Canal: Leeds & Liverpool

Site	Type	NGR	Annual Lockage Totals			Comments
			2021	2022	2023	
Lock 35, Stegneck	Telemetry	SD 918539				Technical issues, site failed

Canal: Ripon

Site	Type	NGR	Annual Lockage Totals			Comments
			2021	2022	2023	
Lock 1, Rhodesfield	Telemetry	SE 323703	161	223		Technical issues, poor quality data
Lock 3, Oxclose	Telemetry	SE 332679	469	656		Technical issues, poor quality data

Canal: Rochdale

Site	Type	NGR	Annual Lockage Totals			Comments
			2021	2022	2023	
Lock 17, Old Royd	Telemetry	SD 948242	421	403		Technical issues
Lock 5, Edward Kilner	Telemetry	SE 030257	1276		818	Site repaired

Canal: Sheffield & South Yorkshire Navigation

Site	Type	NGR	Annual Lockage Totals			Comments
			2021	2022	2023	
Mexborough Low Lock	Telemetry	SE 501001	681		688	Site repaired

Canal: Stainforth & Keadby

Site	Type	NGR	Annual Lockage Totals			Comments
			2021	2022	2023	
Thorne Lock	Telemetry	SE 681131	1236		1775	Site repaired
