

# **Trailable and Portable boat launching locations**

**North Wales & Borders**

**Shropshire Union Canal**

**Author: Derek Smith**

**We would like to thank Derek for kindly putting this  
information together for waterway visitors**

**As the information was provided by a third party  
we cannot guarantee or warrant its completeness  
or accuracy and accordingly the Trust does not  
accept any liability for any inaccuracy or  
omission in the information provided**

# Launching Place Grades

## Slipways & Access (Blue numbers: - For large boats on trailers that need slipways)

1. **Excellent.** For 2.3 Mts and wider trailers. Slipways 1.2+ Mts deep at the wet end.
  2. **Good.** For 2.3 Mts wide trailers. Slipways 60 cm to 1 Mtr deep at the wet end.
  3. **Adequate.** For 2.3 Mts wide trailers. The slipway has features requiring very skilful reverse driving, or could have severe launching or retrieving difficulties.
  4. **Poor.** Narrow slipway or shallow at the end. For trailers less than 2.3 Mts wide; or less than 60 cm deep at the wet end.
- .....

## Landing Places & Access (Green numbers: - For boats on roof-racks or trailers that don't need slipways)

1. **Excellent.** For launching all types of portable boats from Kayaks to RIB's with strong crews.
  2. **Good.** For launching kayaks, canoes, small inflatables and sometimes very small dinghies.
  3. **Adequate.** For launching kayaks and canoes.
  4. **Poor.** For launching kayaks only.
- .....

## Parking (Blue or green letters: - For cars, minibuses & trailers)

- a. **Excellent.** Mainly long term booked car parking for vehicles & trailers. Normally has good supervision and spare space. Enclosed and has gates or a barrier and is very secure. Kept locked or locked overnight by staff or users. Pedestrian & vehicle access restricted or monitored.
- b. **Good.** Mainly long or week-end parking for vehicles & trailers. Normally with spare space and sometimes supervised. Mainly enclosed but with no or low gates and not normally locked. Pedestrian & vehicle access at all times.
- c. **Adequate.** Mainly for day or week-end public parking. Long lay-bys/wide verges or small car parks. Sometimes partly enclosed but no supervision. Kerb parking in quiet roads. Sometimes space for trailer parking.
- d. **Poor.** Time limited parking; one day, or 24 hours, or less. Urban street parking. Very small rural lay-bys. Good car parks, but often full in summer. Places with no parking.

**Possible Slipways & Landing Places**     Shropshire Union Canal

Ticks = ✓ fully surveyed and compiled.    ✓✓ For full information posted on 'Boatlaunch' website.

**Starting at Ellesmere Port**

Index No.	Latitude N	Longitude W	Location	Grade
01	53.28732,	002.89187	Ellesmere Port wharf by the boat museum.	1b
02	53.24608,	002.87068	Croughton Bridge 135. Large rough layby near the bridge.	1c
03	53.23360,	002.88013	Caughall Bridge 134. Large layby near the bridge.	1c
04	53.19433,	002.89943	Chester Basin. Next to the disused slipway at the end of Wharf View.	1d
05	53.19433,	002.89943	Chester Basin. (Slipway) (Obstructed, may be restored or replaced)	4d
06	53.17226,	002.81629	Egg Bridge 119. Car park by the towpath.	1b
07	53.15051,	002.77758	Just before Nixons Bridge 114. An excellent rough cut grass towpath bank.	3c
08	53.13844,	002.75478	Tattenhall Marina (Slipway) Excellent slipway, but expensive.	1a

09	53.13746,	002.70063	Bates Mill Bridge 109. Car park at the 'Shady Oak' pub.	2b
10	53.12392,	002.61107	Calverley Bridge 104. Parking at Calverley Wharf C&RT services.	1b
11	53.12392,	002.61107	<b>Calveley Wharf (Slipway)</b> Usable but due for restoration. Calveley Bridge 104. C&RT services.	2a
12	53.10658,	002.57559	'The Olde Barbridge Inn' pub car park? Good for launching.  No email	2c
13	53.10841,	002.57889	Midway Boats – Wardle. Safe parking on the Midway Boats site?	1b
14	53.10841,	002.57889	<b>Midway Boats (Slipway)</b> Wardle. For very small boats only	4b
15	53.10547,	002.57478	Stone Hall Lane - Barbridge. Verge parking for 7-8 cars. Good offside water access.	3c
16	53.08389,	002.55030	Acton - Poole Hill laybys. Several wide verge parking places here. Short slope up onto the towpath.	1c
17	53.08312,	002.54983	Acton – Poole Hill Fishermen's. Large layby in Poole Hill Road, close to the bridge.	3c
18	53.06160,	002.53600	Nantwich - Marsh Lane. Quarter mile before Marsh Lane Bridge 91. Wide access onto the towpath.	1c

19	53.04306,	002.54115	Baddington Bridge 88. Rough parking area by A530.	4d
20	53.02885,	002.53533	Burrows Bridge 85. Parking spaces on French Lane.	2c
21	53.01220,	002.52381	Coole Lane bridge 82. Rough layby close to the bridge.	2c
22	52.99961,	002.52122	<b>Audlem, the new Overwater Marina (Slipway)</b> CW5 8AY info@overwatermarina.co.uk 01270 812677	3d
23	52.98785,	002.50966	Audlum Bridge 88. Pub car park at the 'Bridge Inn'. Small car park, and they are agreeable for inclusion. <a href="http://www.bridgeinnaudlem.co.uk">www.bridgeinnaudlem.co.uk</a> 01270 818928	3b
24	52.98858,	002.51100	Audlum Bridge 88. Pub car park at the 'Shroppie Fly'. (A hundred yards past the Bridge Inn) <a href="http://www.shroppiefly.com">www.shroppiefly.com</a> traceystery123@btinternet.com 01270 812379 Sent an email 17.02. 2015 asking for permission to include them. They agreed!	1b
25	52.91336,	002.47879	Victoria Bridge 65. Lay by in Maer Lane, Market Drayton.	2d
26	52.91032,	002.47374	Half a mile further on – Waterside Drive Moorings. With public access and street parking.	2d
27	52.90838,	002.47293	Drayton Sports & Leisure Club <a href="http://www.draytonsportsclub.co.uk/">http://www.draytonsportsclub.co.uk/</a> 17.02.2015 Sent a letter via website asking for permission to include them.	2d
28	52.90803,	002.47166	<b>Market Drayton, Talbot Wharf boatyard (slipway)</b> Possibly also canoe launching and parking. 9:00 am – 5:30 pm TF9 1HN 01630 652641 info@talbotwharf.co.uk	3a

29	52.88889,	002.46162	Tyrley Locks. Parking bays & also a layby alongside the bottom lock.	3c
30	52.83200,	002.35143	Half a mile further on - layby near Shebdon Bridge 44.	3d
31	52.82769,	002.33527	Half a mile further on is 'Anchor Inn' At Anchor Bridge 42. For car park, launching & camping. <a href="#">Email unknown</a>	2a
32	52.82464,	002.32464	Lambarts Bridge 41 is half a mile further on. Check layby at the bridge.	2d
33	52.81494,	002.31392	Double Culvert Bridge 40. A mile further on; Check large parking area by A519 bridge.	3c
34	52.80268,	002.30721	The 'Junction Inn' Possible canoe launching and parking.	1b
35	52.78070,	002.26932	'Navigation Inn' car park and launching on A518. Gnosall Bridge 35. <a href="mailto:whitlock.carol@yahoo.co.uk">whitlock.carol@yahoo.co.uk</a>	3b
36	52.77875,	002.26605	The 'Boat Inn' pub car park, lay-by's & kerbs. Launching at the bridge. Boat Inn Bridge 34.	3d
37	52.76100,	002.25197	Wood Eaton Bridge 29. Half a mile further on, the layby in Broad Lane.	3c
38	52.75214,	002.24949	A mile further on, Turnover Bridge 26. Check layby at the bridge on Church Eaton Road.	2d

39	52.74917,	002.24612	High Onn Bridge 25, quarter of a mile further on – Check parking and launching at boats mooring farm.	2c
40	52.74266,	002.23582	Little Onn Bridge 24. Launching & parking by bridge – and possible long term parking on field by the bridge basin.	2b
41	52.73236,	002.22793	Rye Hill Bridge 22 is a mile further on, check launching on Slab Lane using layby parking both sides of the bridge.	3c
42	52.71375,	002.21509	'Hartley Arms' pub car park. Tavern Bridge 19 in Wheaton Aston.	2c
43	52.68071,	002.18130	<b>Brewood; Countrywide Cruisers (Slipway)</b> Possibly also canoe launching and parking.  ST19 9BG 01902 850166 <a href="mailto:info@countrywide-cruisers.com">info@countrywide-cruisers.com</a>	1b
44	52.61339,	002.14659	Napton Narrowboats at canal junction.  Email: - <a href="mailto:shroppie@napton-marina.co.uk">shroppie@napton-marina.co.uk</a>	1a
<b>Navigation finishes at Atherley Junction with the Staffs @ Worcs canal</b>				

Index No. <b>01</b>	<b>Waterway &amp; Location</b> Shropshire Union Canal ~ Ellesmere Port; Wharf (Landing)	Grade <b>1b</b>
<b>Latitude:</b> - N 53.28732		<b>Longitude:</b> - W 002.89187
<b>Nearest place:</b> - Ellesmere Port		<b>Photos:</b> - Three
<b>Contact name:</b> - National Waterways Museum		<b>Region:</b> - Inland England
<b>Phone No:</b> - 0151 355 5017		<b>Mobile:</b> -
<b>Fax No:</b> -	<b>Email:</b> - nationalwaterwaysmuseum@canalrivertrust.org.uk	
<b>Website:</b> - <a href="https://canalrivertrust.org.uk/national-waterways-museum">https://canalrivertrust.org.uk/national-waterways-museum</a>		<i>Nb. The museum has reviewed all the details.</i>
<p><b>Landing Details:</b> - Grade: - 1b      Updated by DMS ~ December 2014</p> <p>Description: - An excellent quality concrete bank Landing place with asphalt path. Suitable for local residents and long distance touring. (Photo's below)</p> <p>Access: - Public unrestricted free usage, belongs to the navigation and available any time during daylight hours.</p> <p>Drop height to the water: - About 20cm</p> <p>Quality &amp; surface of boat carrying route: - Excellent asphalt roads and paths with nicely mown grass between find a spot between any moored boats and launch.</p> <p>Amount of boat manoeuvring space: - Ample.</p> <p>Distance from vehicle to the water: - About 30 Mts depending on where you stop to unload, you could turn left over the verge and onto the grass as you turn onto South Pier Road, or a little further on stop near the museum doors as shown on the photo below. Having unloaded drive onto the car park.</p> <p>Notes: - Have a look for yourself on Google maps – Street view.</p>		
<p><b>Directions:</b> - Post code for SatNav: - CH65 4FW ~ urban location.</p> <p>Address: - South Pier Rd, Ellesmere Port, Merseyside.</p> <p>Parking location - vehicle: - Museum car park. (Beware the height barrier - Maximum 2.1 Mts). Canoeists with larger vehicles should contact the Museum for a decision on whether on that day it is advisable to use either disabled parking, the coach park, or to open the height restriction on the car park.</p> <p>Parking spaces available: - Plenty of space, but if you want to park overnight please check with the National Waterways Museum who own the car park. Avoid the Easter week-end and the first week-end in March when events are on and the car park will be full.</p> <p>Options for trailers: - May be parked attached to your car.</p> <p>Parking security: - Open public space in clear view of anyone passing.</p> <p>Wheel clamps, or other trailer securings are: - Strongly recommended if you have any and use a trailer.</p> <p>Parking period limits: - Unlimited, although barriers to main car park may be closed overnight.</p>		
<p><b>Suitable Boats.</b></p> <p>Suitability for canoes, dinghies, small inflatables, other portable boats with paddles; and RIB's, heavy dinghies, and other low height boats with engines: - Excellent, as long as you can carry them.</p>		



**Local facilities on-site.**

Water tap: - There is one just within the Museum boundary although BW key required to access. Museum cafe sells bottled water 10am-4pm.

Cafe with food: - In the museum.

Rubbish disposal: - There is rubbish disposal for canal users but access requires C&RT facilities key.

Toilets: - Museum reception has toilets open 10am-4pm

**Nearby.**

Nearest train station: - Walk under the motorway and 10-15 minutes along the A5032 towards the town.

Take-a-way food: - Tandoori on the A5032 on your right as you walk towards the station.

Shops: - Row of shops next to the Tandoori, and Ellesmere Port high street is directly over the railway bridge.

Supermarket: - In Ellesmere Port High Street.

**Charges.**

Boating licence: - You will need a C&RT licence to use the canal or some alternative.  
A variety of these are available from: - [www.canalrivertrust.org.uk/boating/licensing](http://www.canalrivertrust.org.uk/boating/licensing)

Launching cost each way: - Free

Parking cost: - Free.

**Navigational Hazards.**

None known.

The date of the photo/s below is: - June 2013



Index No.	<b>Waterway &amp; Location</b> Shropshire Union Canal ~ Croughton Bridge (Landing)	Grade <b>1c</b>
<b>02</b>		
<b>Latitude:</b> - N 53.24608	<b>Longitude:</b> - W 002.87068	
<b>Nearest place:</b> - Croughton hamlet	<b>Photos:</b> - Three	
<b>Contact name:</b> - N/A	<b>Region:</b> - Inland England	
<b>Phone No:</b> - N/A	<b>Mobile:</b> - N/A	
<b>Email:</b> - None.	<b>Fax No:</b> - N/A	
<b>Website:</b> - N/A		
<p><b>Ramp Description:</b> - Grade: - 1c Updated by DMS ~ June 2013</p> <p>Not a slipway: - A good concrete slabs bank Landing place with grass growing between the cracks, and an asphalt towpath next to it. (Photo's below)</p> <p>Access: - Public unrestricted free usage, belongs to the navigation and available any time during daylight hours.</p> <p>Drop height to the water: - About 20cm.</p> <p>Quality &amp; surface of boat carrying route: - From the rough lay-by, along the excellent tarmac roadway, and down the 1.6 Mts wide asphalt path to the towpath.</p> <p>Amount of boat manoeuvring space: - Ample.</p> <p>Distance from vehicle to the water: - Depending on where you park, about 30 Mts.</p> <p>Notes: - Have a look for yourself on Google maps – Street view</p>		
<p><b>Directions:</b> - Post code for SatNav: - No post code, use co-ordinates ~ rural location.</p> <p>Address: - Canal Bridge 135, Wervin Road, Croughton, Chester.</p> <p>Parking location for vehicle: - Compacted gravel, grit &amp; mud layby. (Photo below)</p> <p>Parking spaces available: - Four or five.</p> <p>Options for trailers: - May be parked attached to your car if you are lucky. Otherwise close to your car.</p> <p>Parking security: - Open public space in clear view of anyone passing, but the lane is very quiet.</p> <p>Wheel clamps, or other trailer securings are: - Strongly recommended if you have any and use a trailer.</p> <p>Parking period limits: - Unlimited.</p>		
<p><b>Ramp Type:</b> -</p> <p>Suitability: - Excellent for canoes, dinghies, small inflatables, other portable boats with paddles: - as long as you can carry them. But check width for the pathway.</p>		
<p><b>Local facilities for: –</b></p> <p>Water tap: - Unknown.</p> <p>Rubbish disposal: - Unknown.</p> <p>Toilets: - Unknown.</p> <p>Showers: - Unknown.</p> <p>Pub with food: - Unknown.</p> <p>Shops: - Unknown.</p> <p>Supermarket: - Unknown.</p> <p>Camp site: - Unknown.</p> <p>Nearest bus stop/train station: - Unknown.</p> <p>Other: - Unknown.</p>		

**Charges: -**

Boating licence: - You will need a C&RT licence to use the canal or some alternative.  
A variety of these are available from: - [www.canalrivertrust.org.uk/boating/licensing](http://www.canalrivertrust.org.uk/boating/licensing)

Launching cost each way: - Free.

Parking cost: - Free.

**Navigational Hazards:-**

None known.

The date of the photo/s below is: - June 2013



Index No. <b>03</b>	<b>Waterway &amp; Location</b> Shropshire Union Canal ~ Upton; Caughall Bridge (Landing)	Grade <b>1c</b>
<b>Latitude:</b> - N 53.23360		<b>Longitude:</b> - W 002.88013
<b>Nearest place:</b> - Upton-by-Chester		<b>Photos:</b> - Three
<b>Contact name:</b> - N/A		<b>Region:</b> - Inland England
<b>Phone No:</b> - N/A		<b>Mobile:</b> - N/A
<b>Email:</b> - None.		<b>Fax No:</b> - N/A
<b>Website:</b> - N/A		
<p><b>Ramp Description:</b> - Grade: - 1c      Updated by DMS ~ June 2013</p> <p>Not a slipway: - An excellent concrete edged narrow grass bank Landing place, with asphalt tow path next to it. (Photo's below)</p> <p>Access: - Public unrestricted free usage, belongs to the navigation and available any time during daylight hours.</p> <p>Drop height to the water: - About 20cm.</p> <p>Quality &amp; surface of boat carrying route: - From the lay-by, along the excellent asphalt road, and down the 1.8 Mtr wide footpath to the towpath.</p> <p>Amount of boat manoeuvring space: - Ample.</p> <p>Distance from vehicle to the water: - Depending on where you park, about 30 Mts.</p> <p>Notes: - Have a look for yourself on Google maps – Street view.</p>		
<p><b>Directions:</b> - Post code for SatNav: - No post code, use co-ordinates ~ fairly rural location.</p> <p>Address: - Caughall Road bridge 134, Upton-by-Chester, Cheshire.</p> <p>Parking location for vehicle: - Compacted gravel, grit, sand &amp; mud layby. (Photo below)</p> <p>Parking spaces available: - Four or five.</p> <p>Options for trailers: - May be parked attached to your car if you are lucky, otherwise elsewhere nearby.</p> <p>Parking security: - Open public space in clear view of anyone passing.</p> <p>Wheel clamps, or other trailer securings are: - Strongly recommended if you have any and use a trailer.</p> <p>Parking period limits: - Unlimited.</p>		
<p><b>Ramp Type:</b> -</p> <p>Suitability for canoes, dinghies, small inflatables, other portable boats with paddles; and RIB's, heavy dinghies, and other low height boats with engines: - Excellent, but check the width for the footpath.</p>		
<p><b>Local facilities for: –</b></p> <p>Water tap: - Unknown.</p> <p>Rubbish disposal: - Unknown.</p> <p>Toilets: - Unknown.</p> <p>Showers: - Unknown.</p> <p>Pub with food: - Unknown.</p> <p>Shops: - Unknown.</p> <p>Supermarket: - Unknown.</p> <p>Camp site: - Unknown.</p> <p>Nearest bus stop/train station: - Unknown.</p> <p>Other: - Unknown.</p>		

**Charges: -**

Boating licence: - You will need a C&RT licence to use the canal or some alternative.  
A variety of these are available from: - [www.canalrivertrust.org.uk/boating/licensing](http://www.canalrivertrust.org.uk/boating/licensing)

Launching cost each way: - Free.

Parking cost: - Free.

**Navigational Hazards:-**

None known.

The date of the photo/s below is: - June 2013





Index No. <b>04</b>	<b>Waterway &amp; Location</b> Shropshire Union Canal ~ Chester; Basin (Landing)	Grade <b>1d</b>
<b>Latitude:</b> - N 53.19433		<b>Longitude:</b> - W 002.89943
<b>Nearest place:</b> - Chester		<b>Photos:</b> - Three
<b>Contact name:</b> - N/A		<b>Region:</b> - Inland England
<b>Phone No:</b> - N/A		<b>Mobile:</b> -
<b>Email:</b> - <i>No entries here.</i>	<b>Fax No:</b> - (Email): - None.	
<b>Website:</b> - N/A		
<p><b>Ramp Description:</b> - Grade: - 1d Updated by DMS ~ June 2013</p> <p>Not a slipway: - An adequate Landing place, a wharf of concrete blocks; and old stones &amp; weeds. (Photo's below)</p> <p>Access: - Public unrestricted free usage, belongs to the navigation and available any time during daylight hours.</p> <p>Drop height to the water: - About 40cm.</p> <p>Quality &amp; surface of boat carrying route: - Quite good, a mixture of concrete flags, rough cut grass, and asphalt roadway.</p> <p>Amount of boat manoeuvring space: - Ample.</p> <p>Distance from vehicle to the water: - About 10 Mts.</p> <p>Notes: - You can unload your boat from your vehicle/trailer at the end of Wharf View, but cannot park there.</p>		
<p><b>Directions:</b> - Post code for SatNav: - CH1 4GW ~ Very urban location.</p> <p>Address: - Chester Basin, Wharf View, Chester, Cheshire.</p> <p>Parking location for vehicle: - The adjacent street, if you arrive very early before parking places are all taken by people working nearby; Sunday would be the best day - otherwise you will need to find a public car park, or make some other arrangements.</p> <p>Options for trailers: - Cannot be parked on this site due to lack of parking space.</p> <p>Parking security: - Open public space in clear view of anyone passing - or otherwise unknown.</p> <p>Parking period limits: - Unlimited.</p> <p>(There are conflicting map markers, so the map pin is not in the correct location.)</p>		
<p><b>Ramp Type:</b> -</p> <p>Suitability: - Excellent for canoes, dinghies, small inflatables, other portable boats with paddles; and portable RIB's, heavy dinghies, and other low height boats with engines - as long as you can carry them.</p> <p>(Unsuitable for larger boats until the adjacent slipway is rebuilt)</p>		
<p><b>Local facilities for:</b> -</p> <p>Water tap: - Unknown.</p> <p>Rubbish disposal: - Several bins around the basin.</p> <p>Toilets: - There is a C&amp;RT service block built into the end wall of the apartments block.</p> <p>Showers: - In the service block.</p> <p>Pub with food: - Telford's Warehouse, at the end of the basin.</p> <p>Shops: - Unknown.</p> <p>Supermarket: - Unknown.</p> <p>Nearest bus stop/train station: - Unknown.</p>		

**Charges: -**

Boating licence: - You will need a C&RT licence to use the canal or some alternative.  
A variety of these are available from: - [www.canalrivertrust.org.uk/boating/licensing](http://www.canalrivertrust.org.uk/boating/licensing)

Launching cost each way: - Free.

Parking cost: - Free in the street, charged in the car parks.

**Navigational Hazards:-**

None known.

The date of the photo/s below is: - June 2013.



Index No. <b>05</b>	<b>Waterway &amp; Location</b> Shropshire Union Canal ~ Chester; Basin (Slipway)		Grade <b>0</b>
<b>Latitude:</b> - N 5		<b>Longitude:</b> - W 0	
<b>Nearest place:</b> -		<b>Photos:</b> -	
<b>Contact name:</b> -		<b>Region:</b> -	
<b>Phone No:</b> -		<b>Mobile:</b> -	
<b>Email:</b> -		<b>Fax No:</b> -	
<b>Website:</b> -			
<p><b>Ramp Description:</b> - Grade: -</p> <p>Slipway access: - .</p> <p>Availability: - <b>Currently unavailable, awaiting re-building.</b></p> <p>Type: -</p> <p>(If constructed) Slipway surface: -</p> <p>Slipway quality: -</p> <p>Slipway useable width: -</p> <p>Length of the slope above the water: -</p> <p>Drop to the water: -</p> <p>Gradient above the water: -</p> <p>Length of the slope below the water: -</p> <p>Depth at the end of the underwater slope: -</p> <p>Underwater gradient: -</p> <p>Length of any level bed after the slope: -</p> <p>What's at the end of the concrete: -</p> <p>Quality &amp; surface of vehicle manoeuvring area: - ,</p> <p>Amount of long trailer manoeuvring space: -</p> <p>Crew boarding facility: -</p> <p>Quality of boarding facility: -</p> <p>Height above the water: -</p> <p>Distance for carrying portable boats: -</p> <p>Notes: -</p>			



**Directions:** - Post code for SatNav: - Address: -

Parking location - vehicle: -

Parking spaces available: -

Parking for trailer: -

Parking security: -

Wheel clamps, or other trailer securings are: -

Parking period limits: -

**Ramp Type: -**

Suitability for canoes, dinghies, small inflatables, and other portable boats with paddles: -  
.....

Suitability for rigid inflatables, heavy dinghies, and similar low boats with engines: -  
.....

Suitability for canoes, dinghies, small inflatables, other portable boats with paddles; and RIB's, heavy dinghies, and other low height boats with engines: -

Suitability for residential and other boats with cabins, up to about 20' : -  
.....

Suitability for residential and other boats with cabins, up to about 30' : -  
.....

Suitability for narrowboats: -  
.....

Suitability fo all residential and other boats with cabins, up to about 30' : -

**Local Facilities For: –**

Water tap: - **Unknown.**

Elsan disposal: - **Unknown.**

Rubbish disposal: - **Unknown.**

Toilets: - **Unknown.**

Showers: - **Unknown.**

Petrol: - **Unknown.**

Calor gas: - **Unknown.**

Chandlery: - **Unknown.**

Pub with food: - **Unknown.**

Shops: - **Unknown.**

Supermarket: - **Unknown.**

Nearest bus stop/train station: - **Unknown.**

Camp site for canoeists: - **Unknown.**

**Charges: -**

Boating licence: - You will need a C&RT licence to use the canal. A variety of these are available from: - [www.canalrivertrust.org.uk/boating/licensing](http://www.canalrivertrust.org.uk/boating/licensing)

Slipping Launching cost each way: - £

Parking cost: - Per day = £

Other: -

Date of the above pricing: -

**Navigational Hazards:-**

--	--	--

Index No. <b>06</b>	<b>Waterway &amp; Location</b> Shropshire Union Canal ~ Waverton; Egg Bridge (Landing)		Grade <b>1b</b>
<b>Latitude:</b> - N 53.17226		<b>Longitude:</b> - W 002.81629	
<b>Nearest place:</b> - Waverton village		<b>Photo's:</b> - Three	
<b>Contact name:</b> -		<b>Region:</b> - Inland England	
<b>Phone No:</b> -		<b>Mobile:</b> -	
<b>Email:</b> -		<b>Fax No:</b> -	
<b>Website:</b> -			
<p><b>Ramp Description:</b> - Grade: - 1b Updated by DMS ~ June 2013</p> <p>Not a slipway: - An excellent grass edged asphalt bank Landing place. (Photo's below)</p> <p>Access: - Public unrestricted free usage, belongs to the navigation and available any time during daylight hours.</p> <p>Drop height to the water: - About 30cm.</p> <p>Quality &amp; surface of boat carrying route: - Good asphalt car park, path and bank.</p> <p>Amount of boat manoeuvring space: - Ample.</p> <p>Distance from vehicle to the water: - Depends on where you can park, but about 10 Mts. If you're lucky your boat can be lifted off the vehicle and put straight into the water.</p> <p>Notes: - Have a look for yourself on Google maps – Street view, you can only see the car park but It's worth a look.</p>			
<p><b>Directions:</b> - Post code for SatNav: - No post code, use co-ordinates ~ Urban location.</p> <p>Address: - Egg Bridge Lane, Waverton, Chester.</p> <p>Parking location - vehicle: - Small asphalt public car park. The tow path joins onto it, as does a grass recreation area. Very popular with the villagers. (Photo below)</p> <p>Parking spaces available: - Plenty of space.</p> <p>Options for trailers: - May be parked attached to your car if you are lucky, otherwise alongside or close to it. As there are likely to be lots of children about, best park any trailer in the far corner of the car park.</p> <p>Parking security: - Open public space in clear view of anyone passing.</p> <p>Wheel clamps, or other trailer securings are: - Strongly recommended if you have any and use a trailer.</p> <p>Parking period limits: - Unlimited.</p>			
<p><b>Ramp Type:</b> -</p> <p>Suitability for canoes, dinghies, small inflatables, other portable boats with paddles; and RIB's, heavy dinghies, and other low height boats with engines: - Excellent.</p>			

**Local facilities for: –**

Water tap: - **Unknown.**  
Rubbish disposal: - **Unknown.**  
Toilets: - **Unknown.**  
Showers: - **Unknown.**  
Pub with food: - **Unknown.**  
Shops: - **Unknown.**  
Supermarket: - **Unknown.**  
Camp site: - **Unknown.**  
Nearest bus stop/train station: - **Unknown.**  
Other: - **Unknown.**

**Charges: -**

Boating licence: - **You will need a C&RT licence to use the canal or some alternative.**  
**A variety of these are available from: - [www.canalrivertrust.org.uk/boating/licensing](http://www.canalrivertrust.org.uk/boating/licensing)**

Launching cost each way: - **Free.**  
Parking cost: - Per day **Free.**

**Navigational Hazards:-**

**None known.**

The date of the photo/s below is: - **June 2013.**



Index No. <b>07</b>	<b>Waterway &amp; Location</b> Shropshire Union Canal ~ Hargrave; Long Lane (Landing)	Grade <b>3c</b>
<b>Latitude:</b> - N 53.15051		<b>Longitude:</b> - W 002.77758
<b>Nearest place:</b> - Hargrave.		<b>Photo's:</b> - Three
<b>Contact name:</b> -		<b>Region:</b> - Inland England
<b>Phone No:</b> -		<b>Mobile:</b> -
<b>Email:</b> -		<b>Fax No:</b> -
<b>Website:</b> -		
<p><b>Ramp Description:</b> - Grade: - 3c      Updated by DMS ~ June 2013</p> <p>Not a slipway: - An excellent rough cut grass towpath bank Landing place. (Photo's below)</p> <p>Access: - Public unrestricted free usage, belonging to the navigation and available any time during daylight hours.</p> <p>Drop height to the water: - About 30cm.</p> <p>Quality &amp; surface of boat carrying route: - Except for the section over the ditch, its good tarmac then turf.</p> <p>Amount of boat manoeuvring space: - Adequate, you need to cross a quiet road, then down a short but rough ditch bank, over the ditch (which has boards across it in case its muddy), and up a couple of rough cut steps in the opposite bank and onto the tow path.</p> <p>Distance from vehicle to the water: - About 20 Mts.</p> <p>Notes: -</p>		
<p><b>Directions:</b> - Post code for SatNav: - No post code, use co-ordinates ~ Very rural location.</p> <p>Address: - Long Lane, Hargrave, Nr Chester.</p> <p>Parking location: - Lay-by. (Photo below)</p> <p>Parking spaces available: - Four or five but arrive early as it's popular with fishermen.</p> <p>Options for trailers: - Not a suitable site to bring a group due the ditch.</p> <p>Parking security: - Open public space in clear view of anyone passing.</p> <p>Parking period limits: - Unlimited.</p>		
<p><b>Ramp Type:</b> -</p> <p>Suitability for canoes &amp; kayaks: - Adequate. (Unsuitable for larger boats)</p>		
<p><b>Local facilities for:</b> – Rubbish bin in the lay-by.</p> <p>Water tap: - Unknown.</p> <p>Toilets: - Unknown.</p> <p>Showers: - Unknown.</p> <p>Pub with food: - Unknown.</p> <p>Shops: - Unknown.</p> <p>Supermarket: - Unknown.</p> <p>Camp site: - Unknown.</p> <p>Nearest bus stop/train station: - Unknown.</p> <p>Other: - Unknown.</p>		

**Charges: -**

Boating licence: - You will need a C&RT licence to use the canal or some alternative.  
A variety of these are available from: - [www.canalrivertrust.org.uk/boating/licensing](http://www.canalrivertrust.org.uk/boating/licensing)

Launching cost each way: - Free.

Parking cost: - Per day Free.

**Navigational Hazards:-**

None known.

The date of the photo/s below is: - June 2013



Index No. <b>08</b>	<b>Waterway &amp; Location</b> Shropshire Union Canal ~ Tattenhall Marina (Slipway)		Grade <b>1a</b>
<b>Latitude:</b> - N 53.13861		<b>Longitude:</b> - W 002.75523	
<b>Nearest Place:</b> - Tattenhall village		<b>Photo's:</b> - Three	
<b>Contact name:</b> - Scott McNeil or Johnny Darnell		<b>Region:</b> - Inland England	
<b>Phone No:</b> - 01829 771742		<b>Mobile:</b> -	
<b>Email:</b> - <i>No entries</i>		<b>Fax No (Email):</b> - enquiries@tattenhall-marina.co.uk	
<b>Website:</b> - www.tattenhall-marina.co.uk		<i>Nb. The marina was invited to review all the details.</i>	
<p><b>Ramp Description:</b> - Grade: - 1a Updated by DMS ~ December 2014</p> <p>Slipway access: - Private, property of the marina and available by prior arrangement, please book.</p> <p>Type: - Excellent concrete slipway dug into corner of the marina basin. (Photo below).</p> <p>Slipway useable width: - 4.8 Mts</p> <p>Length of the slope above the water: -10 Mts</p> <p>Drop to the water: - 50 cm</p> <p>Therefore gradient above the water: - 1:10</p> <p>Length of the slope below the water: - 13+ Mts</p> <p>Depth at the end of the underwater slope: - 1.15+ Mts</p> <p>Therefore underwater gradient: -1:12 (Challenging but not severe)</p> <p>What's at the end of the concrete: - Levels onto a gravel section of the marina basin bed.</p> <p>Surface &amp; quality of vehicle manoeuvring area: - Large concrete slabs of excellent quality.</p> <p>Amount of trailer manoeuvring space: - Ample.</p> <p>Quality &amp; type of crew boarding facility: - Excellent jetty alongside the slipway.</p> <p>Distance for carrying portable boats: - Not permitted on this site.</p> <p>Notes: - It is a very large site. The slipway is mainly used by the Marina workshop to move narrowboats onto dry ground for hull maintenance. Launching is probably best done by removing boat securings, passing the bow line to crew ashore, reversing the trailer and vehicle slowly into the water and breaking hard. You may need to use waders to recover large boats or get your feet wet.</p> <p>(Have a look for yourself, zoom in on the map above and switch to satellite view)</p>			
<p><b>Directions:</b> - Post code for SatNav: - CH3 9NE ~ Rural location.</p> <p>Address: - Newton Lane, Tattenhall, Nr Chester.</p> <p>From the A41 follow the signs to the Ice Cream Factory public attraction. As you approach the Factory turn into the overflow car park on your left. The barrier to the Marina access lane is on the left corner of the car park.</p> <p>Parking location - vehicle: - Large parking area adjacent to the slipway.</p> <p>Parking spaces available for: - Plenty of space.</p> <p>Parking for trailer: - Either attached to your car or alongside it.</p> <p>Parking security: - The site is enclosed and has a lifting barrier at the entrance that is kept down. It gives access to a very long lane to the Marina. There is a keypad that permits regular users to raise it but visitors will need to buzz the office and ask for admission. Although there is pedestrian access past the barrier, due to the long walk down the exposed lane few would want to take the trouble.</p> <p>Wheel clamps, or other trailer securing are: - Probably desirable.</p> <p>Parking period limits: - Negotiable.</p>			



**Ramp Type: -**

Suitability for residential, long and heavy cabin boats, between about 20ft and 30ft : - [Adequate](#).

For residential shorter cabin boats, up to about 22ft : - [Adequate](#).

For portable rigid inflatables, heavy dinghies, and similar low boats with engines: - [Excellent](#).

For canoes, dinghies, small inflatables, and other portable boats with paddles: - [Not available](#).

**Local facilities for: –**

**On-site: -**

Nearest water tap: - [There are numerous taps on the mooring jetties across the marina.](#)

Rubbish disposal: - [Large bin by the slipway.](#)

Elsan disposal: - [At the back of the reception block, about 100 Mts from the slipway.](#)

Nearest toilets, showers: - [Also at the back of the reception block.](#)

Calor gas: - [Available from the Marina.](#)

Chandlery: - [There is a small chandlery shop on site.](#)

**Nearby: -**

Nearest bus stop/train station: - [Busses to Chester are available every 30 minutes from the Ice Cream Factory near the marina entrance drive. Train station in Chester.](#)

Pub with food: - [In Tattenhall, which is a 30 minute walk if you don't have a car.](#)

Shops: - [There are shops in Tattenhall village.](#)

Petrol: - [It's a six mile drive towards Chester down the A41 for the nearest petrol.](#)

Supermarket: - [It's a seven mile drive towards Chester down the A41 for Sainsbury's.](#)

**Charges: -**

Boating licence: - [You will need a C&RT licence to use the canal. A variety of these are available from: - \[www.canalrivertrust.org.uk/boating/licensing\]\(http://www.canalrivertrust.org.uk/boating/licensing\)](#)

Slipping cost: - [£20.00 each way.](#)

Parking cost: - [Unknown.](#)

**Navigational Hazards:-**

[None known.](#)

The date of the photo/s below is: - [2013](#)





Index No.	<b>Waterway &amp; Location</b> Shropshire Union Canal ~ Tiverton; Shady Oak (Landing)	Grade <b>2b</b>
<b>09</b>		
<b>Latitude:</b> - N 53.13746		<b>Longitude:</b> - W 002.70063
<b>Nearest place:</b> - Tiverton village		<b>Photo's:</b> - Three
<b>Contact name:</b> - Chris or Annette		<b>Region:</b> - Inland England
<b>Phone No:</b> - Not available		<b>Mobile:</b> - 07765 588748
<b>Email:</b> - <i>No entries!</i>	<b>Fax No (Email):</b> - theshadyoak@live.co.uk	
<b>Website:</b> - <a href="http://www.theshadyoakpubcampsite.co.uk">www.theshadyoakpubcampsite.co.uk</a>		<i>Nb. The pub was invited to review all the details.</i>
<p><b>Ramp Description:</b> - Grade: - 2b Updated by DMS ~ July 2013</p> <p>Not a slipway: - A good quality stone edged grass bank Landing place. (See photo below)</p> <p>Landing access: - Private, but with unrestricted access and available any time during daylight hours. Please book car park space in advance if you want to use the car park.</p> <p>Drop height to the water: - About 40cm.</p> <p>Amount of boat manoeuvring space: - Ample.</p> <p>Distance from car park to the water: - About 50 Mts. (Much less from the layby).</p> <p>Quality &amp; surface of boat carrying route: - Excellent asphalt car park, short section of narrow tarmac layby alongside the pub, then across the daisy lawn close to the bridge, unfasten the loose chain, move a couple of plant pots to one side, and launch your boat. (Or as the lane is very quiet, you may want to reverse onto the layby to unload and then drive to the car park afterwards.)</p> <p>Notes: - Have a look for yourself from the top of the bridge on Google maps – Street view. If you are towing a trailer choose a route to avoid crossing this bridge as the hump is very acute.</p>		
<p><b>Directions:</b> - Post code for SatNav: - CW6 9UE ~ Rural location.</p> <p>Address: - The Shady Oak pub, Bates Mill Lane, Tiverton, Tarporley, Cheshire.</p> <p>Parking location - vehicle: - Pub car park. (Photo below)</p> <p>Parking spaces available: - Plenty of space.</p> <p>Options for trailers: - May be parked alongside or close to your car.</p> <p>Parking security: - Open pub car park in clear view of anyone passing.</p> <p>Wheel clamps, or other trailer securings are: - Strongly recommended if you have any and use a trailer.</p> <p>Parking period limits: - Negotiable.</p>		
<p><b>Ramp Type:</b> -</p> <p>Suitability for canoes, kayaks and small inflatables: - Excellent.</p> <p>(Unsuitable for larger boats)</p>		

**Local facilities for:** – There is a camp site at the pub, also water tap, rubbish disposal, toilets, showers, and of course the pub has good food.

Shops: - **Unknown.**

Supermarket: - **Unknown.**

Nearest bus stop/train station: - **Unknown.**

Other: - **Unknown.**

**Charges: -**

Boating licence: - You will need a C&RT licence to use the canal or some alternative.

A variety of these are available from: - [www.canalrivertrust.org.uk/boating/licensing](http://www.canalrivertrust.org.uk/boating/licensing)

Launching cost each way: - **Enquire.**

Parking cost: - **Enquire.**

**Navigational Hazards:-**

None known.

The date of the pricing above & photo/s below is: - **June 2013**



Index No. <b>10</b>	<b>Waterway &amp; Location</b> Shropshire Union Canal ~ Calveley; C&RT Service Point (Landing)	Grade <b>1b</b>
<b>Latitude:</b> - N 53.12392		<b>Longitude:</b> - W 002.61107
<b>Nearest place:</b> - Calveley village		<b>Photo's:</b> - Three. June 2013
<b>Contact name:</b> - Region manager (C&RT)		<b>Region:</b> - Inland England
<b>Phone No:</b> - 0303 040 4040		<b>Mobile:</b> -
<b>Email:</b> - No entries		<b>Fax No:</b> - <b>Email:</b> - enquiries.northwalesborders@canalrivertrust.org.uk
<b>Website:</b> -		
<p><b>Ramp Description:</b> - Grade: - 1b Updated by DMS ~ June 2013</p> <p>Not a slipway: - A good, mixed surface wharf on the bank, but beware of the angle iron along the piling.</p> <p>Landing access: - Public, belonging to the navigation. Unrestricted free usage, available any time during daylight hours.</p> <p>Drop height to the water: - About 30cm.</p> <p>Quality &amp; surface of boat carrying route: - Good, mainly compacted gravel &amp; grit.</p> <p>Amount of boat manoeuvring space: - Ample.</p> <p>Distance from vehicle to the water: - Depending on where you park, it can almost be lifted off the vehicle and put straight into the water.</p> <p>Notes: - If you are intending to park here for some time, especially with a trailer, best to consult with the C&amp;RT local office before use. Have a look for yourself, zoom in on the map above and switch to satellite view.</p>		
<p><b>Directions:</b> - Post code for SatNav: - No post code, use co-ordinates ~ Fairly rural location.</p> <p>Address: - C&amp;RT Depot, Track opposite the Davenport Arms (CW6 9JN), A51, Calveley.</p> <p>Parking location - vehicle: - Alongside the depot access track. (Photo below)</p> <p>Parking spaces available: - Plenty of space.</p> <p>Options for trailers: - May be parked attached to your car, alongside, or close to your car.</p> <p>Parking security: - You may need a C&amp;RT Amenities key to open the access gate to this enclosed site. Although it's normally open daytime it's often locked overnight. The Trust staff often use the maintenance depot which is also located here.</p> <p>Wheel clamps, or other trailer securings are: - Strongly recommended if you have any and use a trailer.</p> <p>Parking period limits: - Unlimited.</p>		
<p><b>Ramp Type:</b> -</p> <p>Suitability for canoes, dinghies, small inflatables, other portable boats with paddles; and RIB's, heavy dinghies, and other low height boats with engines: - Excellent so long as you can carry them.</p>		

**Local facilities for: –**

On site there is a water tap, rubbish disposal, toilets and showers.  
The Davenport Arms is close by on the A51 and has good food.  
You can ask the depot staff about overnight camping, but it's uncertain what the response will be!

- Shops: - **Unknown.**
- Supermarket: - **Unknown.**
- Camp site: - **Unknown.**
- Nearest bus stop/train station: - **Unknown.**
- Other: - **Unknown.**

**Charges: -**

Boating licence: - You will need a C&RT licence to use the canal or some alternative.  
A variety of these are available from: - [www.canalrivertrust.org.uk/boating/licensing](http://www.canalrivertrust.org.uk/boating/licensing)

Launching cost each way: - **Free.**

Parking cost: - Per day: - **Free.**

**Navigational Hazards:-**

None known.

The date of the photo/s below is: - **June 2013**



Index No. <b>11</b>	<b>Waterway &amp; Location</b> (Slipway)		Grade <b>0</b>
<b>Latitude: - N 5</b>		<b>Longitude: - W 0</b>	
<b>Nearest place: -</b>		<b>Photo's: -</b>	
<b>Contact name: -</b>		<b>Region: -</b>	
<b>Phone No: -</b>		<b>Mobile: -</b>	
<b>Email: - No entries</b>		<b>Fax No (Email): -</b>	
<b>Website: -</b>			
<p><b>Ramp Description:</b> - Grade: - Updated by DMS ~ May 2014</p> <p>Slipway access: - Private, property of ..... and available ..... by prior arrangement, please book.</p> <p>Slipway access: - Private Public Property of: -</p> <p>Availability: -</p> <p>Type: - Challenging rough concrete slipway dug into the bank. (Photo's below)</p> <p>Slipway Ramp quality: - Unknown. Excellent. Good. Adequate. Challenging. (Photo's below)</p> <p>Type: - Constructed slipway    Compacted shingle &amp; sand ramp    Mud &amp; hardcore ramp</p> <p>Gravel or sand sloping bank</p> <p>Slipway surface: - Concrete Metal grid ~ built mainly level into the bank up and through the bank up and over the bank alongside the bank Down and away from the bank Angled</p> <p>Slipway Ramp useable width: - Approx 3 Mts</p> <p>Length of the slope above the water: -</p> <p>Drop to the water: -</p> <p>Gradient above the water: -</p> <p>Length of the slope below the water: -</p> <p>Depth at the end of the underwater slope: -</p> <p>Underwater gradient: -</p> <p>Length of any level bed after the slope: -</p> <p>What's at the end of the concrete: - It's uncertain where the concrete ends and the mud starts.</p>			

Surface & quality of vehicle manoeuvring area: - **Unknown.** Concrete, Asphalt, Compacted gravel & grit, Compacted shingle & sand, Loose gravel, Turf, of excellent good adequate poor quality.

Amount of trailer manoeuvring space: - **Unknown.** Ample. Fairly easy. Just adequate. Very challenging. Would need man-handling.

Type of crew boarding facility & quality: - **Unknown.** None provided. Landing on the bank. Landing on piers. Wide platform on the bank. Wide platform on piers Set of pontoons. Jetty. Stone wharf. Rough grass bank. Mown grass bank. Stone edged grass bank. Remove your trailer, pull the boat back into the slip and use the wharf in the slip cutting.

Excellent. Good. Adequate. Poor.

Height above the water: -

Distance for carrying portable boats: - You can unload your boat and lower it straight onto the water.

Notes: -

(Have a look for yourself, zoom in on the map above and switch to satellite view)

(Have a look for yourself on Google maps – Street view)

**Directions:** - Post code for SatNav: - ~ Rural location? Urban location?

Address: -

Parking location - vehicle: - **Uncertain.** (Photo below)

Parking spaces available for: - **Unknown.** None. One unit. Two or three units. Four or five. Plenty of space

Parking for trailer: - **Uncertain.** May be parked attached to your car. May be parked alongside your car. Elsewhere on this site. Cannot be parked on this site.

Parking security: - **Unknown.**

Open public space in clear view of anyone passing.

Open and public but hidden from general public view.

Enclosed public or private, unstaffed and with no gates or barrier.

Enclosed public or private, unstaffed, but with locked gates or barrier

Enclosed private, staffed, but with no gates or barrier.

Enclosed private and staffed, gated or with barrier, but only locked overnight.

Enclosed private and staffed, gated or with barrier, and normally kept locked.

Enclosed general public car park – Free.

Enclosed general public car park – Pay.

Wheel clamps, or other trailer securings are: - **Suggested.** Desirable. Strongly recommended if you have any and use a trailer.

Parking period limits: - **Unknown.**

(There are conflicting map markers, so the map pin may not be in the correct location.)

**Ramp Type: -**

Suitability for canoes, dinghies, small inflatables, and other portable boats with paddles: -

Suitability for portable rigid inflatables, heavy dinghies, and similar low boats with engines: -

Suitability for canoes, dinghies, small inflatables, other portable boats with paddles; and portable RIB's, heavy dinghies, and other low height boats with engines: -

For residential and other heavy boats with cabins, up to about 20ft : -

For residential, longer and heavier heavy boats with cabins, up to about 30ft : -

For all residential and other heavy boats with cabins, up to about 30ft : -

For narrowboats: -

Comment: -

Unknown. Excellent. Good. Adequate. Uncertain. Not suitable. (Unsuitable for larger boats)  
(Unsuitable for launching larger boats but okay for recovering them) (..... if you can carry them)  
(Not a suitable venue for day boats and probably not available)

**Local facilities for: -**

On-site: -

water tap

Elsan disposal

rubbish disposal

overnight moorings

toilets

showers

petrol

Calor gas

chandlery

engine repairs

restaurant

pub with food

shops

supermarket

launderette

Nearest bus stop/train station

camp site for canoeists

Nearby: -

**Charges: -**

Boating licence: - You will need a C&RT licence to use the canal river. A variety of these are available from: - [www.canalrivertrust.org.uk/boating/licensing](http://www.canalrivertrust.org.uk/boating/licensing)

Slipping Launching cost each way: - Please enquire.

Parking cost: - Please enquire.

Per day = Per week =

Other: -

Date of the above pricing: - Unknown.

**Navigational Hazards:-**

None known.

The date of the pricing above & photo/s below is: -

--	--	--



Index No. <b>12</b>	<b>Waterway &amp; Location</b> Shropshire Union Canal ~ Barbridge; Olde Barbridge Inn (Landing)	Grade <b>2c</b>
<b>Latitude:</b> - N 53.10658	<b>Longitude:</b> - W 002.57559	
<b>Nearest place:</b> - Barbridge	<b>Photos:</b> - Three. 12.01.2015 ~ 13.15 pm	
<b>Contact name:</b> -	<b>Region:</b> - Inland England	
<b>Phone No:</b> - 01270 528327	<b>Mobile:</b> -	
<b>Email:</b> - <i>No entries</i>	<b>Fax No (Email):</b> - None.	
<b>Website:</b> - <a href="http://www.thebarbridgeinn.co.uk">www.thebarbridgeinn.co.uk</a>		
<p><b>Ramp Description:</b> - Grade: - 2c                      Compiled by DMS ~ January 2015</p> <p>Not a slipway: - A long concrete mooring bank, topped with concrete slabs. Mainly for pub users, it also makes an excellent Landing place. Suitable for one day or week-end boating for all users. (Center photo below)</p> <p>Access and availability: - Private, property of the Inn and available by prior arrangement, please phone and book.</p> <p>Drop height to the water: - About 30 cm.</p> <p>Amount of boat manoeuvring space: - Ample.</p> <p>Distance from vehicle to the water: - About 30 Mts. Depending on where you can park.</p> <p>Quality, surface, and description of boat carrying route: - Excellent. Carry your boat up the gentle slope of the asphalt car park and through one of the gap in one of the corners. (Left photo). Then across 3 Mts or turf onto the mooring bank. Then find a gap between moored boats which in the summer may be easiest mid-morning.</p> <p>Notes: - Have a look for yourself, zoom in on the map above and switch to satellite view.</p>		
<p><b>Directions:</b> - Post code for SatNav: - CW5 6AY ~ urban location.</p> <p>Address: - Olde Barbridge Inn, Old Chester Road, Barbridge, Nr. Nantwich, Cheshire.</p> <p>Parking location for vehicle: - Uncertain. Depends how busy the Inn is. You may be able to park on the Inn car park, (Right photo), or the overflow car park to the South, or by the kerb in Old Chester Road.</p> <p>Parking spaces available: - Plenty of space. But it may be very busy.</p> <p>Options for trailers: - May be parked attached to your car by the kerb, if you are lucky.</p> <p>Parking security: - Open public space in clear view of anyone passing.</p> <p>Wheel clamps, or other trailer securings are: - Strongly recommended if you have any and use a trailer.</p> <p>Parking period limits: - Negotiable on either of the pub car parks. Unrestricted against the kerb.</p>		
<p><b>Ramp Type:</b> -</p> <p>Excellent for: - Canoes, kayaks, dinghies, small inflatables, and other portable boats with paddles. (Unsuitable for larger boats)</p>		

**Local facilities on-site: -**

None known.

Pub with food: - [At the Inn.](#)

Water tap: - [Unknown.](#)

Rubbish disposal: - [Unknown.](#)

Toilets: - [At the Inn.](#)

Showers: - [Unknown.](#)

Other: - [Unknown.](#)

**Nearby: -**

Camp site: - [Unknown.](#)

Nearest bus stop/train station: - [Unknown.](#)

Other: - [Unknown.](#)

**Charges: -**

Boating licence: - [You will need a C&RT licence to use the canal.](#) A variety of these are available from: - [www.canalrivertrust.org.uk/boating/licensing](http://www.canalrivertrust.org.uk/boating/licensing) (Some canoeists may have an alternative permit)

Boat launching each way: - [Free.](#)

Vehicle & trailer parking: - [Free.](#)

**Navigational Hazards:-**

None known.

The date of the photo/s below is: - [January 2015.](#)



Index No.	<b>Waterway &amp; Location</b> Shropshire Union Middlewich Branch ~ Wardle; Midway Boats (Landing)	Grade <b>1b</b>
<b>13</b>		
<b>Latitude:</b> - N 53.10939		<b>Longitude:</b> - W 002.57864
<b>Nearest place:</b> - Wardle		<b>Photo's:</b> - Three
<b>Contact name:</b> - Steve Batty		<b>Region:</b> - Inland England
<b>Phone No:</b> - 01270 528482		<b>Mobile:</b> - 07831 429899
<b>Email:</b> - <i>No entries</i>	<b>Fax No (Email):</b> - sales@midwayboats.co.uk	
<b>Website:</b> - www.midwayboats.co.uk		
<p><b>Ramp Description:</b> - Grade: - 1b Updated by DMS ~ July 2013</p> <p>Not a slipway: - An excellent concrete wharf landing on the bank. (Photo's below)</p> <p>Access: - Private, property of the marina and only available during working hours.</p> <p>Suitability: - Suitable for one day use, week-ends or long trips by anyone.</p> <p>Drop height to the water: - About 30cm.</p> <p>Amount of boat manoeuvring space: - Ample.</p> <p>Distance from vehicle to the water: - Depends on where other vehicles are parked, if you're lucky boats can be lifted off the vehicle and put straight into the water. Small trailers can use the adjacent 3 Mts wide slipway.</p> <p>Quality, surface, and description of boat carrying route: - Wide gravel &amp; grit wharf with good concrete edging. Some of the road has old asphalt mixed in.</p> <p>Notes: - The old canal bridge you have to cross to reach this site has a very acute hump and trailers longer than about 2 Mts won't make it.</p>		
<p><b>Directions:</b> - Post code for SatNav: - CW5 6BE ~ Fairly urban location.</p> <p>Address: - Midway Boats Ltd., Barbridge Marina, Wardle, Nr. Nantwich, Cheshire.</p> <p>Parking location for vehicle: - Several boatyard car parks. (Part of one is on the photo below)</p> <p>Parking spaces available: - Four or five.</p> <p>Options for trailers: - Not a suitable site for canoe trailers; short trailers for inflatables and dinghies may be parked alongside or close to your car.</p> <p>Parking security: - Open private space but hidden from general public view.</p> <p>Wheel clamps, or other trailer securings are: - Strongly recommended if you have any and use a short trailer.</p> <p>Parking period limits: - Negotiable.</p>		
<p><b>Ramp Type:</b> -</p> <p>Suitability for canoes, dinghies, small inflatables, and other portable boats with paddles: - Excellent.</p> <p>Suitability for rigid inflatables, heavy dinghies, and similar low boats with engines: - Excellent if on a roof rack, but if you have a trailer no longer than about 3 Mts you can use the slipway instead.</p>		
<p><b>Local facilities for:</b> –</p> <p>On site there is a water tap and rubbish disposal.</p> <p>Nearby is a pub with good food and toilets.</p> <p>Camp site: - <i>Unknown.</i></p>		

**Charges: -**

Boating licence: - You will need a C&RT licence to use the canal or some alternative.  
A variety of these are available from: - [www.canalrivertrust.org.uk/boating/licensing](http://www.canalrivertrust.org.uk/boating/licensing)

Launching cost each way: - Please enquire.

Parking cost: - Enquire.

**Navigational Hazards:-**

None known.

The date of the photo/s below is: - July 2013.



Index No. <b>14</b>	<b>Waterway &amp; Location</b> Shropshire Union Canal ~ Barbridge; Stone Hall Lane (Landing)	Grade <b>3c</b>
<b>Latitude:</b> - N 53.10547		<b>Longitude:</b> - W 002.57478
<b>Nearest place:</b> - Barbridge		<b>Photos:</b> - Three. 12.01.2015t ~ 12.45 pm
<b>Contact name:</b> - N/A		<b>Region:</b> - Inland England
<b>Phone No:</b> - N/A		<b>Mobile:</b> - N/A
<b>Email:</b> - <i>No entries</i>		<b>Fax No (Email):</b> - None.
<b>Website:</b> - N/A		
<p><b>Ramp Description:</b> - Grade: - 3c                      Compiled by DMS ~ January 2015</p> <p>Not a slipway: - A good mooring place with a heavy steel piling edge, topped with concrete paving slabs. Suitable for one day or week-end boating for all users. Normally used for mooring a C&amp;RT work boat, but there is no gate in the gap in the hedge, the landing is easy to access, and there is space at the end to launch. (Left photo below)</p> <p>Access and availability: - Belongs to the navigation and at the time of writing there is unrestricted free usage and the landing is available any time during daylight hours. An alternative to the Olde Barbridge Inn just along the road if there are too many moored boats for you to find launching space.</p> <p>Drop height to the water: - About 20 cm.</p> <p>Amount of boat manoeuvring space: - Sufficient.</p> <p>Distance from vehicle to the water: - About 25 Mts. Depending on where you park.</p> <p>Quality, surface, and description of boat carrying route: - Adequate. Carry along the rough asphalt lane, then through the 1 Mtr wide gap in the hedge where a gate used to be. (The gap is not visible in Google maps). You will need to carefully angle your boat down the two concrete steps onto the landing. (Center photo).</p> <p>Notes: -</p>		
<p><b>Directions:</b> - Post code for SatNav: - CW5 6AY ~ urban location.</p> <p>Address: - Stoke Hall Lane, off Old Chester Road, Barbridge, Nr. Nantwich, Cheshire.</p> <p>Parking location for vehicle: - Either on the verge of Stoke Hall lane, (Right photo), or kerbside in Old Chester Road.</p> <p>Parking spaces available: - Plenty of space.</p> <p>Options for trailers: - May be parked attached to your car, against the kerb in Old Chester Road.</p> <p>Parking security: - Open public space in clear view of anyone passing.</p> <p>Wheel clamps, or other trailer securings are: - Strongly recommended if you have any and use a trailer.</p> <p>Parking period limits: - Unrestricted.</p>		
<p><b>Ramp Type:</b> -</p> <p>Adequate for: - Canoes &amp; kayaks. (Unsuitable for larger boats)</p>		

**Local facilities on-site: -**

None known.

Water tap: - **Unknown.**

Rubbish disposal: - **Unknown.**

Toilets: - **Olde Barbridge Inn**

Showers: - **Unknown.**

Other: - **Unknown.**

**Nearby: -**

Pub with food: - **Olde Barbridge Inn**

Shops: - **Unknown.**

Supermarket: - **Unknown.**

Camp site: - **Unknown.**

Nearest bus stop/train station: - **Unknown.**

Other: - **Unknown.**

**Charges: -**

Boating licence: - **You will need a C&RT licence to use the canal. A variety of these are available from: - [www.canalrivertrust.org.uk/boating/licensing](http://www.canalrivertrust.org.uk/boating/licensing) (Some canoeists may have an alternative permit)**

Boat launching each way: - **Free.**

Vehicle & trailer parking: - **Free.**

**Navigational Hazards:-**

None known.

The date of the photo/s below is: - **January 2015.**





Index No. <b>15</b>	<b>Waterway &amp; Location</b> Shropshire Union Canal ~ Acton; Poole Hill layby's (Landing)	Grade <b>1c</b>
<b>Latitude:</b> - N 53.08389	<b>Longitude:</b> - W 002.55030	
<b>Nearest place:</b> - Acton village	<b>Photos:</b> - Three. 12.01.2015 ~ 14.15 pm	
<b>Contact name:</b> - N/A	<b>Region:</b> - Inland England	
<b>Phone No:</b> - N/A	<b>Mobile:</b> - N/A	
<b>Email:</b> - <i>No entries</i>	<b>Fax No (Email):</b> - None.	
<b>Website:</b> - N/A		
<p><b>Ramp Description:</b> - Grade: - 1c                      Compiled by DMS ~ January 2015</p> <p>Not a slipway: - An excellent towpath grass bank Landing place with concrete edges, topped with wide concrete slabs covered with turf. Suitable for one day or week-end boating for all users. (Left photo below)</p> <p>Access and availability: - Public unrestricted free usage, belongs to the navigation and available any time during daylight hours.</p> <p>Drop height to the water: - About 30 cm.</p> <p>Amount of boat manoeuvring space: - Ample.</p> <p>Distance from vehicle to the water: - About 10 Mts.</p> <p>Quality, surface, and description of boat carrying route: - Adequate. From the layby scramble your boat up the 1.5 Mtr high slope to the top of the bank. (Center photo). The height is much less in some places. Then find a spot between fishermen to launch.</p> <p>Notes: - Have a look for yourself on Google maps – Street view.</p>		
<p><b>Directions:</b> - Post code for SatNav: - No post code, use co-ordinates ~ rural location.</p> <p>Address: - Poole Hill Road, off the A51 near junction with A534, near Nantwich, Cheshire.</p> <p>Parking location for vehicle: - Several casual layby's along the road, choose an empty one. They may be muddy when wet. (Right photo)</p> <p>Parking spaces available: - Four or five, in different places.</p> <p>Options for trailers: - Not really suitable for these short layby's.</p> <p>Parking security: - Open public space in clear view of anyone passing.</p> <p>Parking period limits: - Unrestricted.</p>		
<p><b>Ramp Type:</b> -</p> <p>Adequate for: - Canoes, kayaks, dinghies, small inflatables, other portable boats with paddles; and also portable RIB's, heavy dinghies, and other low height boats with engines as long as you can carry them up the slope onto the bank.</p>		

**Local facilities on-site: -**

None known.

**Nearby: -**

Camp site: - **Unknown.**

Nearest bus stop/train station: - **Unknown.**

Other: - **Unknown.**

**Charges: -**

Boating licence: - **You will need a C&RT licence to use the canal. A variety of these are available from: - [www.canalrivertrust.org.uk/boating/licensing](http://www.canalrivertrust.org.uk/boating/licensing) (Some canoeists may have an alternative permit)**

Boat launching each way: - **Free.**

Vehicle Parking: - **Free.**

**Navigational Hazards:-**

None known.

The date of the photo/s below is: - **January 2015**





Index No. <b>16</b>	<b>Waterway &amp; Location</b> Shropshire Union Canal ~ Action; Poole Hill Fishermen's (Landing)	Grade <b>3c</b>
<b>Latitude:</b> - N 53.08312	<b>Longitude:</b> - W 002.54983	
<b>Nearest place:</b> - Acton Village	<b>Photo's:</b> - Three	
<b>Contact name:</b> - N/A	<b>Region:</b> - Inland England	
<b>Phone No:</b> - N/A	<b>Mobile:</b> - N/A	
<b>Email:</b> - <i>No entries</i>	<b>Fax No: (Email):</b> - None.	
<b>Website:</b> - N/A		
<p><b>Ramp Description:</b> - Grade: - 3c      Updated by DMS ~ June 2013</p> <p>Not a slipway: - An excellent towpath grass bank Landing place with concrete edges, topped with wide concrete slabs. Suitable for one day or week-end boating for all users.      (Left photo below)</p> <p>Access and availability: - Public unrestricted free usage, belongs to the navigation and available any time during daylight hours.</p> <p>Drop height to the water: - 30cm</p> <p>Quality &amp; surface of boat carrying route: - Good but varied route starting with tarmac roadway, then carry your boat over the style, then coarse loose gravel and finally turf to the canal bank. (If you are lucky the five-bared gate may be open.)</p> <p>Amount of boat manoeuvring space: - Ample, the only obstacle being the style.</p> <p>Distance from vehicle to the water. About 25 Mts, depending on where you park.</p> <p>Notes: - Have a look for yourself on Google maps – Street view.</p>		
<p><b>Directions:</b> - Post code for SatNav: - No post code, use co-ordinates ~ Rural location.</p> <p>Address: - Poole Hill Road, off the A51 near junction with A534, near Nantwich, Cheshire.</p> <p>Parking location: - Small coarse gravel layby.      (Photo below)</p> <p>Parking spaces available: - Four or five, but you will need to arrive early as it's popular with fishermen.</p> <p>Options for trailers: - Not a suitable site due to its small size and popularity.</p> <p>Parking security: - Open public space in clear view of anyone passing.</p> <p>Parking period limits: - Unlimited.</p>		
<p><b>Ramp Type:</b> - Suitability for canoes, dinghies, small inflatables, and other portable boats with paddles: - Excellent. (Unsuitable for larger boats)</p>		
<p><b>Local facilities for: –</b></p> <p>Water tap: - Unknown.</p> <p>Rubbish disposal: - Unknown.</p> <p>Toilets: - Unknown.</p> <p>Showers: - Unknown.</p> <p>Pub with food: - Unknown.</p> <p>Shops: - Unknown.</p> <p>Supermarket: - Unknown.</p> <p>Camp site: - Unknown.</p> <p>Nearest bus stop/train station: - Unknown.</p> <p>Other: - Unknown.</p>		

**Charges: -**

Boating licence: - You will need a C&RT licence to use the canal or some alternative.  
A variety of these are available from: - [www.canalrivertrust.org.uk/boating/licensing](http://www.canalrivertrust.org.uk/boating/licensing)

Launching cost each way: - Free.

Parking cost: - Per day: - Free.

**Navigational Hazards:-**

None known.

The date of the photo/s below is: - June 2013.



Index No. <b>17</b>	<b>Waterway &amp; Location</b> Shropshire Union Canal ~ Nantwich; Marsh Lane (Landing)	Grade <b>1c</b>
<b>Latitude:</b> - N 53.06160	<b>Longitude:</b> - W 002.53600	
<b>Nearest place:</b> - Nantwich	<b>Photos:</b> - Three. 12.01.2015 ~ 15.00 pm.	
<b>Contact name:</b> - N/A	<b>Region:</b> - Inland England	
<b>Phone No:</b> - N/A	<b>Mobile:</b> - N/A	
<b>Email:</b> - <i>No entries</i>	<b>Fax No (Email):</b> - None.	
<b>Website:</b> - N/A		
<p><b>Ramp Description:</b> - Grade: - 1c                      Compiled by DMS ~ January 2015</p> <p>Not a slipway: - An excellent towpath grass bank Landing place with turf covered concrete edges. Most suitable for one day or week-end boating for all users. (Left photo below)</p> <p>Access and availability: - Public unrestricted free usage, belongs to the navigation and available any time during daylight hours.</p> <p>Drop height to the water: - About 30 cm.</p> <p>Amount of boat manoeuvring space: - Ample.</p> <p>Distance from vehicle to the water: - About 10 Mts, depending on where you can park and boats are moored.</p> <p>Quality, surface, and description of boat carrying route: - Excellent. From the pavement through the 2 Mtr wide footpath entrance, (Center photo), and up the gentle slope onto the fine gravel surfaced hard towpath. Find a space on the grass bank where there are no moored boats and launch.</p> <p>Notes: - Have a look for yourself on Google maps – Street view.</p>		
<p><b>Directions:</b> - Post code for SatNav: - CW5 5TH ~ urban location.</p> <p>Address: - Opposite 143, Marsh Lane, Nantwich, Cheshire.</p> <p>Parking location for vehicle: - Against the kerb in Marsh Lane. (Right photo)</p> <p>Parking spaces available: - Plenty of space.</p> <p>Options for trailers: - May be parked attached to your car, but arrive early to be sure of enough space.</p> <p>Parking security: - Open public space in clear view of anyone passing.</p> <p>Wheel clamps, or other trailer securings are: - Strongly recommended if you have any and use a trailer.</p> <p>Parking period limits: - Unrestricted.</p>		
<p><b>Ramp Type:</b> -</p> <p>Excellent for: - Canoes, kayaks, dinghies, small inflatables, and other portable boats with paddles.</p> <p>Challenging for: - Portable RIB's, heavy dinghies, and other low height boats with engines. You will need to carry them along the road as the pavement is too narrow, and hope nobody has parked across the footpaths entrance and blocked your access. You should be okay if you arrive quite early in the day.</p>		

**Local facilities on-site: -**

None known.

**Nearby: -**

Pub with food: - [In the town.](#)

Shops: - [In the town.](#)

Supermarket: - [In the town.](#)

Nearest bus stop/train station: - [In the town.](#)

Camp site: - [Unknown.](#)

Other: - [Unknown.](#)

**Charges: -**

Boating licence: - [You will need a C&RT licence to use the canal.](#) A variety of these are available from: - [www.canalrivertrust.org.uk/boating/licensing](http://www.canalrivertrust.org.uk/boating/licensing) (Some canoeists may have an alternative permit)

Boat launching each way: - [Free.](#)

Vehicle & trailer parking: - [Free.](#)

**Navigational Hazards:-**

None known.

The date of the photo/s below is: - [January 2015.](#)



Index No. <b>18</b>	<b>Waterway &amp; Location</b> Shropshire Union Canal ~ Nantwich; Baddington Bridge (Landing)	Grade <b>4d</b>
<b>Latitude:</b> - N 53.04306	<b>Longitude:</b> - W 002.54115	
<b>Nearest place:</b> - Nantwich	<b>Photos:</b> - Three. 16.02.2015 ~ 10.30 am	
<b>Contact name:</b> - N/A	<b>Region:</b> - Inland England	
<b>Phone No:</b> - N/A	<b>Mobile:</b> - N/A	
<b>Email:</b> - None.	<b>Fax No:</b> - N/A	
<b>Website:</b> - None		
<p><b>Landing Details:</b> - Grade: - 4d                      Compiled by DMS ~ February 2015</p> <p>Description: - An excellent towpath grass bank Landing Place with concrete blocks edges. Most suitable for one day or week-end boating for everyone. (Left photo below)</p> <p>Access and availability: - Public unrestricted free usage, belongs to the navigation and available any time during daylight hours. (Very quiet locality).</p> <p>Drop height to the water: - About 30 cm.</p> <p>Amount of boat manoeuvring space: - Challenging.</p> <p>Distance from vehicle to the water: - Depending on where you park, about 30 Mts.</p> <p>Quality, surface, and description of boat carrying route: - From the parking place, carry your boat through the latched gate and down the poor flight of eight steep and uneven steps to the grass towpath which may be muddy if wet, then launch your boat. The steps are timber framed and infilled with chippings and grit. (Center photo)</p> <p>Notes: - Have a look for yourself on Google maps – Street view.</p>		
<p><b>Directions:</b> - Post code for SatNav: - CW5 8AD ~ urban location.</p> <p>Address: - Baddington Bridge 88, A5830, South of Nantwich, Cheshire.</p> <p>Parking location for vehicle: - On a small parking area between a bungalow and bankside hedges. Gives access to farmer's fields and the towpath gate. Mainly hardcore covered with grass and weeds on the left and rough meadow grass on the right. Ownership unknown? (Right photo)</p> <p>Parking spaces available: - Four or five.</p> <p>Options for trailers: - Not suitable for this location due the small size of the parking area.</p> <p>Parking security: - Open public space in clear view of anyone passing.</p> <p>Parking period limits: - Unrestricted.</p>		
<p><b>Suitable Boats:</b> -</p> <p>Adequate for kayaks only. (Unsuitable for larger boats due to the steep steps)</p>		



**Local facilities on-site: -**

None known.

**Nearby: -**

Pub with food: - **Unknown.**

Shops: - **Unknown.**

Supermarket: - **Unknown.**

Camp site: - **Unknown.**

Nearest bus stop/train station: - **Unknown.**

Water tap: - **Unknown.**

Rubbish disposal: - **Unknown.**

Toilets: - **Unknown.**

Showers: - **Unknown.**

Other: - **Unknown.**

**Charges: -**

Boating licence: - You will need a C&RT licence to use the canal. A variety of these are available from: - [www.canalrivertrust.org.uk/boating/licensing](http://www.canalrivertrust.org.uk/boating/licensing) (Some canoeists may have an alternative permit)

Boat launching each way: - **Free.**

Vehicle Parking: - Per day: - **Free.**

**Navigational Hazards:-**

None known.

The date of the photo/s below is: - February 2015.



Index No. <b>19</b>	<b>Waterway &amp; Location</b> Shropshire Union Canal ~ Broomhall Sound; Burrows Bridge (Landing)	Grade <b>2c</b>
<b>Latitude:</b> - N 53.02885	<b>Longitude:</b> - W 002.53533	
<b>Nearest place:</b> - Broomhall Sound	<b>Photos:</b> - Three. 16.02.2015 ~ 11.00 am.	
<b>Contact name:</b> - N/A	<b>Region:</b> - Inland England	
<b>Phone No:</b> - N/A	<b>Mobile:</b> - N/A	
<b>Email:</b> - None.	<b>Fax No:</b> - N/A	
<b>Website:</b> - None.		
<p><b>Landing Details:</b> - Grade: - 2c                      Compiled by DMS ~ February 2015</p> <p>Description: - An excellent towpath grass bank Landing Place with concrete blocks edges and galvanised piles, which are a bit overgrown with grass and weeds. Suitable for one day or week-end boating for everyone. (Left photo below)</p> <p>Access and availability: - Public unrestricted free usage, belongs to the navigation and available any time during daylight hours. (Very quiet locality).</p> <p>Drop height to the water: - About 40 cm.</p> <p>Amount of boat manoeuvring space: - Ample.</p> <p>Distance from vehicle to the water: - About 75 Mts.</p> <p>Quality, surface, and description of boat carrying route: - From the car park carry your boat to the excellent tarmac road, then turn right and cross over the bridge. Go through the latched wooden gate on your left and down the shallow flight of six good broad chippings &amp; grit infilled steps to the towpath, which may be a bit muddy if wet, and launch your boat. (Center photo)</p> <p>Notes: - Have a look for yourself on Google maps – Street view.</p>		
<p><b>Directions:</b> - Post code for SatNav: - No post code, use co-ordinates ~ rural location.</p> <p>Address: - Burrows Bridge 85, French lane, Broomhall Sound, South of Nantwich, Cheshire.</p> <p>Parking location for vehicle: - Rough chippings C&amp;RT parking area next to the bridge. (Should be extended to the canal and a canoe landing wharf created). (Right photo)</p> <p>Parking spaces available: - Four or five.</p> <p>Options for trailers: - Not suitable for this location due to the small size of the parking area.</p> <p>Parking security: - Open and public but partly hidden from general public view.</p> <p>Parking period limits: - Unrestricted.</p>		
<p><b>Suitable Boats:</b> -</p> <p>Good for canoes, kayaks, dinghies, small inflatables, and other portable boats with paddles. (Unsuitable for larger boats)</p>		



**Local facilities on-site: -**

None known.

**Nearby: -**

Pub with food: - **Unknown.**

Shops: - **Unknown.**

Supermarket: - **Unknown.**

Camp site: - **Unknown.**

Nearest bus stop/train station: - **Unknown.**

Water tap: - **Unknown.**

Rubbish disposal: - **Unknown.**

Toilets: - **Unknown.**

Showers: - **Unknown.**

Other: - **Unknown.**

**Charges: -**

Boating licence: - You will need a C&RT licence to use the canal. A variety of these are available from: - [www.canalrivertrust.org.uk/boating/licensing](http://www.canalrivertrust.org.uk/boating/licensing) (Some canoeists may have an alternative permit)

Boat launching each way: - **Free.**

Vehicle Parking: - **Free.**

**Navigational Hazards:-**

None known.

The date of the photo/s below is: - February 2015.



Index No. 20	<b>Waterway &amp; Location</b> Shropshire Union Canal ~ Audlem; Coole Lane Bridge (Landing)	Grade <b>2c</b>
<b>Latitude:</b> - N 53.01220	<b>Longitude:</b> - W 002.52381	
<b>Nearest place:</b> - Audlem	<b>Photos:</b> - Three. 16.02.2015 ~ 11.30 am	
<b>Contact name:</b> - N/A	<b>Region:</b> - Inland England	
<b>Phone No:</b> - N/A	<b>Mobile:</b> - N/A	
<b>Email:</b> - None.	<b>Fax No:</b> - N/A	
<b>Website:</b> - None.		
<p><b>Landing Details:</b> - Grade: - 2c                      Compiled by DMS ~ February 2015</p> <p>Description: - An excellent towpath grass bank Landing Place with galvanised piles edges, partly overgrown with grass &amp; weeds. Suitable for one day or week-end boating for everyone. (Left photo below)</p> <p>Access and availability: - Public unrestricted free usage, belongs to the navigation and available any time during daylight hours. (Very quiet locality).</p> <p>Drop height to the water: - About 40 cm.</p> <p>Amount of boat manoeuvring space: - Sufficient.</p> <p>Distance from vehicle to the water: - Depending on where you park, about 35 Mts.</p> <p>Quality, surface, and description of boat carrying route: - Carry your boat from the layby along the excellent tarmac road towards the bridge. Turn right before you cross, and go through the 1 Mtr wide latched gate and down the eight quite steep steps to the towpath. The steps have concrete fronts and are infilled with grit and sand. The towpath is turf covered and may be muddy if wet. (Center photo)</p> <p>Notes: -</p>		
<p><b>Directions:</b> - Post code for SatNav: - No post code, use co-ordinates ~ rural location.</p> <p>Address: - Coole Lane Bridge 82, Coole Lane, Nr. Nantwich, Cheshire.</p> <p>Parking location for vehicle: - Long hardcore &amp; grit casual lay-by. Will be muddy and have puddles if wet. (Right photo)</p> <p>Parking spaces available: - Four or five.</p> <p>Options for trailers: - Attached to vehicle.</p> <p>Parking security: - Open public space in clear view of anyone passing.</p> <p>Wheel clamps, or other trailer securings are: - Strongly recommended if you have any and use a trailer.</p> <p>Parking period limits: - Unrestricted.</p>		
<p><b>Suitable Boats:</b> -</p> <p>Good for kayaks.</p> <p>Poor for canoes, small dinghies, small inflatables, and other portable boats with paddles due to the steep steps. (Unsuitable for larger boats)</p>		

**Local facilities on-site: -**

None known.

**Nearby: -**

Pub with food: - **Unknown.**

Shops: - **Unknown.**

Supermarket: - **Unknown.**

Camp site: - **Unknown.**

Nearest bus stop/train station: - **Unknown.**

Water tap: - **Unknown.**

Rubbish disposal: - **Unknown.**

Toilets: - **Unknown.**

Showers: - **Unknown.**

Other: - **Unknown.**

**Charges: -**

Boating licence: - You will need a C&RT licence to use the canal. A variety of these are available from: - [www.canalrivertrust.org.uk/boating/licensing](http://www.canalrivertrust.org.uk/boating/licensing) (Some canoeists may have an alternative permit)

Boat launching each way: - **Free.**

Vehicle Parking: - **Free.**

**Navigational Hazards:-**

None known.

The date of the photo/s below is: - February 2015.



Index No. <b>21</b>	<b>Waterway &amp; Location</b> Shropshire Union Canal ~ Audlem; Overwater Marina (Slipway)		Grade <b>3d</b>
<b>Latitude:</b> - N 52.99970		<b>Longitude:</b> - W 002.51973	
<b>Nearest place:</b> - Audlem		<b>Photo's:</b> - Three. 18.11.2014. 11.45 am.	
<b>Contact name:</b> -		<b>Region:</b> - Inland England	
<b>Phone No:</b> - 01270 812677		<b>Mobile:</b> -	
<b>Email:</b> - <i>No entries</i>		<b>Fax No (Email):</b> - info@overwatermarina.co.uk	
<b>Website:</b> - <a href="http://www.overwatermarina.co.uk">www.overwatermarina.co.uk</a>		<i>Nb. The marina was invited to review all the details.</i>	
<p><b>Ramp Description:</b> - Category: - 3d Updated by DMS ~ December 2014</p> <p>Slipway access: - Private, property of the marina and available during working hours (10.00am - 4.00 pm in Summer, 10.00am - 3.00pm in winter) by prior arrangement if there is spare parking space - (which is very unlikely in summer), please enquire.</p> <p>Type: - Excellent concrete slipway built alongside the bank in a corner of the marina basin. (Photo below)</p> <p>Slipway useable width: - 6 Mts.</p> <p>Length of the slope above the water: - 12 Mts.</p> <p>Drop to the water: - 60 cm.</p> <p>Therefore gradient above the water: - 1:20</p> <p>Length of the slope below the water: - 28+ Mts.</p> <p>Depth at the end of the underwater slope: - 1.4+ Mts.</p> <p>Therefore underwater gradient: - 1:20 (May give severe launching and retrieving problems)</p> <p>What's at the end of the concrete: - It's uncertain where the concrete ends and the mud starts.</p>			
<p>Quality and surface of vehicle manoeuvring area: - Good loose gravel &amp; grit.</p> <p>Amount of trailer manoeuvring space: - Ample.</p> <p>Type of crew boarding facility &amp; quality: - Excellent wood or plastic jetty entirely on piers.</p> <p>Height above the water: - 40 cm.</p> <p>Distance for carrying portable boats: - If you are lucky you may be able to unload your boat and lower it straight onto the water on the slipway ramp, otherwise about 10 Mts.</p> <p>Notes: - This slipway slope is designed for narrowboats. You will need to tie your boat rope to the trailer or pass it to crew on the jetty. Reversing some distance into the water and braking hard to slide the boat off should work. For retrieving you will need to wear waders or get your feet wet.</p> <p>They have a cafe on site in case you are in need of an ice cream after your launch or recovery efforts. (Have a look for yourself, zoom in on the map above and switch to satellite view)</p>			

**Directions:** - Post code for SatNav: - CW5 8AY ~ Rural location.

Address: - [Overwater Marina Ltd., Coole Lane, Nantwich, Cheshire.](#)

Parking location - vehicle: - [Parking bays around the marina.](#)

Parking spaces available: - [One or two for canoeists with a roof rack.](#)

Parking for trailer: - [Alongside your car for one day if there is space.](#)

Parking security: - [Enclosed private and staffed daytime, gated and normally kept locked. The gate can be climbed over but the locality is very quiet.](#)

Parking period limits: - [Negotiable.](#)

**Ramp Type: -**

Suitability for residential, long and heavy cabin boats, between about 20ft and 30ft : - [Very challenging.](#)

For residential shorter cabin boats, up to about 22ft : - [Also very challenging.](#)

For canoes, dinghies, small inflatables, and other portable boats with paddles: - [Adequate.](#)

**Local facilities for: -**

On-site: - [Water tap, Elsan disposal, rubbish disposal, overnight moorings, toilets, showers, Calor gas, small chandlery.](#)

Nearby in Audlem: - [Pub with food and shops.](#)

**Charges: -**

Boating licence: - [You will need a C&RT licence to use the canal. A variety of these are available from: - \[www.canalrivertrust.org.uk/boating/licensing\]\(http://www.canalrivertrust.org.uk/boating/licensing\)](#)

Slipping cost each way: - [£12.50 each way \(same day\) £25.00 each way \(separate days\). Please check.](#)

Group canoe launching each way: - [\(Included with parking\)](#)

Individual canoe launching each way: - [\(Included with parking\)](#)

Vehicle Parking: - [Per day: - £2.50. Per week: - £10.00 Please check all prices.](#)

Trailer Parking: - [Included. \(One day only if room\).](#)

**Navigational Hazards:-**

[None known.](#)

[The date of the pricing above & photo/s below is: - November 2014.](#)





Index No. 22	<b>Waterway &amp; Location</b> Shropshire Union Canal ~ Audlem; Bridge Inn (Landing)	Grade <b>3b</b>
<b>Latitude:</b> - N 52.98785	<b>Longitude:</b> - W 002.50966	
<b>Nearest place:</b> - Audlem	<b>Photos:</b> - Three. 16.02.2015 ~ 12.00 noon	
<b>Contact name:</b> -	<b>Region:</b> - Inland England	
<b>Phone No:</b> - 01270 818928	<b>Mobile:</b> -	
<b>Email:</b> - None.	<b>Fax No:</b> - N/A	
<b>Website:</b> - <a href="http://www.bridgeinnaudlem.co.uk">www.bridgeinnaudlem.co.uk</a>		
<p><b>Landing Details:</b> - Grade: - 3b                      Compiled by DMS ~ February 2015</p> <p>Description: - An adequate towpath grass bank Landing Place with old stone edges, covered with turf and weeds and may be a bit muddy if wet.. Suitable for one day or week-end boating for everyone. (Left photo below)</p> <p>Access and availability: - Public unrestricted free usage, belongs to the navigation and available any time during daylight hours. Parking however is private, property of the pub and available by prior arrangement, please phone and book.</p> <p>Drop height to the water: - About 30 cm.</p> <p>Amount of boat manoeuvring space: - Sufficient.</p> <p>Distance from vehicle to the water: - Depending on where you park, about 15 Mts.</p> <p>Quality, surface, and description of boat carrying route: - From the excellent asphalt car park, carry your boat across the tarmac road down the concrete steps to the grit &amp; sand towpath and launch. (Center photo)</p> <p>Notes: - Have a look for yourself, zoom in on the map above and switch to satellite view.</p>		
<p><b>Directions:</b> - Post code for SatNav: - CW3 0DX ~ urban location.</p> <p>Address: - The Bridge Inn, 12 Shropshire Street, Audlem, Cheshire.</p> <p>Parking location for vehicle: - Pub car park. (Right photo)</p> <p>Parking spaces available: - 14. You will need to arrive early in summer or they may all be taken.</p> <p>Options for trailers: - Cannot be parked anywhere at this venue.</p> <p>Parking security: - Open public space in clear view of anyone passing.</p> <p>Parking period limits: - Negotiable, especially if overnight.</p>		
<p><b>Suitable Boats:</b> -</p> <p>Adequate for canoes &amp; kayaks. Unsuitable for larger boats due to the steps.</p>		

**Local facilities on-site: -**

None known.

**Nearby: -**

Pub with food: - **Unknown.**

Shops: - **Unknown.**

Supermarket: - **Unknown.**

Camp site: - **Unknown.**

Nearest bus stop/train station: - **Unknown.**

Water tap: - **Unknown.**

Rubbish disposal: - **Unknown.**

Toilets: - **Unknown.**

Showers: - **Unknown.**

Other: - **Unknown.**

**Charges: -**

Boating licence: - You will need a C&RT licence to use the canal. A variety of these are available from: - [www.canalrivertrust.org.uk/boating/licensing](http://www.canalrivertrust.org.uk/boating/licensing) (Some canoeists may have an alternative permit)

Boat launching each way: - **Free.**

Vehicle Parking: - **Book with the pub, you may need to buy a drink or a meal.**

Trailer Parking: - **Car park not big enough – Try the nearby ‘Shroppie Fly’**

**Navigational Hazards:-**

None known.

The date of the pricing above & photo/s below is: - February 2015.





Index No.	<b>Waterway &amp; Location</b> Shropshire Union Canal ~ Audlem; Shroppie Fly (Landing)	Grade <b>1b</b>
<b>23</b>		
<b>Latitude:</b> - N 52.98858	<b>Longitude:</b> - W 002.51100	
<b>Nearest place:</b> - Audlem	<b>Photos:</b> - Three. 16.02.2015 ~ 12.15 pm	
<b>Contact name:</b> - Tracey	<b>Region:</b> - Inland England	
<b>Phone No:</b> - 01270 812379	<b>Mobile:</b> - 01270 812379	
<b>Email:</b> - traceystery123@btinternet.com	<b>Fax No:</b> -	
<b>Website:</b> - www.shroppiefly.com	<i>Nb. The pub has reviewed all the details.</i>	
<p><b>Landing Details:</b> - Grade: - 1b                      Compiled by DMS ~ February 2015</p> <p>Description: - An excellent blue brick wharf Landing Place with concrete blocks edges. Suitable for one day, week-end boating, or long touring trips for everyone. (Left photo below) You may need to negotiate the short term moving of moored boats in summer.</p> <p>Access and availability: - Public unrestricted free usage, belongs to the navigation and available any time during daylight hours. However the car park is the private property of the pub and only available by prior arrangement the landlady, so please remember to phone and book. See the notes below!</p> <p>Drop height to the water: - About 30 cm.</p> <p>Amount of boat manoeuvring space: - Ample.</p> <p>Distance from vehicle to the water: - Boats can almost be lifted off the vehicle and put straight into the water. (Center photo)</p> <p>Notes: - With it being a canal side well known pub they are extremely busy in the summer months not just weekends but all through the week too so you will need to book parking and arrive early. Avoid bank holidays when people are everywhere and mostly outside and it's rammed with the carpark full to bursting. Have a look for yourself, zoom in on the map above and switch to satellite view.</p>		
<p><b>Directions:</b> - Post code for SatNav: - CW3 0DX ~ urban location.</p> <p>Address: - The Shroppie Fly, Audlem Wharf, Shropshire Street, Audlem, Cheshire. On arrival drive down the access road alongside the canal, past the Bridge Inn, and turn onto the Audlem Mill parking area. Reverse past the 'No Entry' and 'No Unauthorised Access' signs and park at the wharf to unload. Having unloaded, park on the car park as previously agreed with the landlady.</p> <p>Parking location for vehicle: - Pub car park. (Right photo)</p> <p>Parking spaces available: - Plenty of space but see the notes above.</p> <p>Options for trailers: - May be parked alongside or close to your car.</p> <p>Parking security: - Open public space in clear view of anyone passing.</p> <p>Wheel clamps, or other trailer securings are: - Strongly recommended if you have any and use a trailer.</p> <p>Parking period limits: - Negotiable.</p>		
<p><b>Suitable Boats:</b> -</p> <p>Excellent for canoes, kayaks, dinghies, small inflatables, other portable boats with paddles; and also portable RIB's, heavy dinghies, and other low height boats with engines as long as you can carry them.</p>		

**Local facilities on-site: -**

Pub with food: - [Shroppie Fly](#)  
Water tap: - [C&RT service station](#)  
Toilets: - [C&RT service station, or the Shroppie Fly.](#)

**Nearby: -**

Shops: - [Unknown.](#)  
Supermarket: - [Unknown.](#)  
Camp site: - [Unknown.](#)  
Nearest bus stop/train station: - [Unknown.](#)  
Rubbish disposal: - [Unknown.](#)  
Showers: - [Unknown.](#)  
Other: - [Unknown.](#)

**Charges: -**

Boating licence: - [You will need a C&RT licence to use the canal. A variety of these are available from: - \[www.canalrivertrust.org.uk/boating/licensing\]\(http://www.canalrivertrust.org.uk/boating/licensing\) \(Some canoeists may have an alternative permit\)](#)  
Group & individual canoe, and other boat launching, each way: - [Free.](#)  
Vehicle & trailer parking: - [Please enquire and book. \(You may be expected to buy a drink or a meal\).](#)

**Navigational Hazards:-**

[None known.](#)

[The date of the pricing above & photo/s below is: - February 2015.](#)



Index No. <b>24</b>	<b>Waterway &amp; Location</b> Shropshire Union Canal ~ Market Drayton; Victoria Bridge (Landing)	Grade <b>2d</b>
<b>Latitude:</b> - N 52.91336	<b>Longitude:</b> - W 002.47879	
<b>Nearest place:</b> - Market Drayton	<b>Photos:</b> - Three. 16.02.2015 ~ 13.15 pm	
<b>Contact name:</b> - N/A	<b>Region:</b> - Inland England	
<b>Phone No:</b> - N/A	<b>Mobile:</b> - N/A	
<b>Email:</b> - None	<b>Fax No:</b> - N/A	
<b>Website:</b> - None.		
<p><b>Landing Details:</b> - Grade: - 2d                      Compiled by DMS ~ February 2015</p> <p>Description: - An excellent towpath grass bank Landing Place with concrete edges, overgrown with turf and weeds. Suitable for one day or week-end boating for everyone. (Left photo below)</p> <p>Access and availability: - Public unrestricted free usage, belongs to the navigation and available any time during daylight hours.</p> <p>Drop height to the water: - About 30 cm.</p> <p>Amount of boat manoeuvring space: - Ample.</p> <p>Distance from vehicle to the water: - About 25 Mts.</p> <p>Quality, surface, and description of boat carrying route: - From the lay-by carry your boat along the excellent tarmac road towards the bridge. Just as you reach it turn left through the wide latched metal gate, and do down the good grit &amp; sand sloping path to the grass towpath and there launch your boat. (Center photo)</p> <p>Notes: - Have a look for yourself on Google maps – Street view.</p>		
<p><b>Directions:</b> - Post code for SatNav: - TF9 4BH ~ urban location.</p> <p>Address: - Victoria Bridge 65, Maer lane, Market Drayton, Shropshire.</p> <p>Parking location for vehicle: - Good asphalt, chippings &amp; grit casual lay-by close to the bridge. (Right photo)</p> <p>Parking spaces available: - Two or three vehicles.</p> <p>Options for trailers: - Not suitable for this location due to the shortness of the lay-by.</p> <p>Parking security: - Open public space in clear view of anyone passing.</p> <p>Parking period limits: - Unrestricted.</p>		
<p><b>Suitable Boats:</b> -</p> <p>Excellent for canoes, kayaks, dinghies, small inflatables, and other portable boats with paddles. (Unsuitable for larger boats)</p>		

**Local facilities on-site: -**

None known.

**Nearby: -**

Pub with food: - **Unknown.**

Shops: - **Unknown.**

Supermarket: - **Unknown.**

Camp site: - **Unknown.**

Nearest bus stop/train station: - **Unknown.**

Water tap: - **Unknown.**

Rubbish disposal: - **Unknown.**

Toilets: - **Unknown.**

Showers: - **Unknown.**

Other: - **Unknown.**

**Charges: -**

Boating licence: - You will need a C&RT licence to use the canal. A variety of these are available from: - [www.canalrivertrust.org.uk/boating/licensing](http://www.canalrivertrust.org.uk/boating/licensing) (Some canoeists may have an alternative permit)

Boat launching each way: - **Free.**

Vehicle & trailer parking: - **Free.**

**Navigational Hazards:-**

None known.

The date of the photo/s below is: - February 2015.



Index No. <b>25</b>	<b>Waterway &amp; Location</b> Shropshire Union Canal ~ Market Drayton; Waterside Drive Moorings (Landing)	Grade <b>2d</b>
<b>Latitude:</b> - N 52.91032	<b>Longitude:</b> - W 002.47374	
<b>Nearest place:</b> - Market Drayton	<b>Photos:</b> - Three. 16.02.2015 ~ 13.45 pm	
<b>Contact name:</b> - N/A	<b>Region:</b> - Inland England	
<b>Phone No:</b> - N/A	<b>Mobile:</b> - N/A	
<b>Email:</b> - None.	<b>Fax No:</b> - N/A	
<b>Website:</b> - None.		
<p><b>Landing Details:</b> - Grade: - 2d                      Compiled by DMS ~ February 2015</p> <p>Description: - An excellent pavement Landing Place with timber plank edges backfilled with chippings &amp; grit. Also alternative wooden jetties if there are no boats moored at them. Most suitable for one day or week-end boating by local residents. (Left photo below)</p> <p>Access and availability: - The public pavement giving access to houses presumes unrestricted free bank usage, available any time during daylight hours, but the jetties will belong to the marina.</p> <p>Drop height to the water: - About 30 cm.</p> <p>Amount of boat manoeuvring space: - Ample.</p> <p>Distance from vehicle to the water: - About 40 Mts.</p> <p>Quality, surface, and description of boat carrying route: - From the road, carry your boat down the excellent hard surface footpath alongside the green and find a vacant jetty. (Center photo)</p> <p>Notes: - Have a look for yourself on Google maps – Street view.</p>		
<p><b>Directions:</b> - Post code for SatNav: - TF9 1HU ~ very urban location.</p> <p>Address: - Waterside Drive, Market Drayton, Shropshire.</p> <p>Parking location for vehicle: - Kerbside along the green and opposite to it. (Right photo). Avoid parking opposite residents' car ports.</p> <p>Parking spaces available: - Four or five vehicles.</p> <p>Options for trailers: - Not suitable for this location due to a shortage of parking space.</p> <p>Parking security: - Open public space in clear view of anyone passing.</p> <p>Parking period limits: - Unrestricted.</p>		
<p><b>Suitable Boats:</b> -</p> <p>Excellent for canoes, kayaks, dinghies, small inflatables, and other portable boats with paddles. Unsuitable parking for trailers with larger boats.</p>		



**Local facilities on-site: -**

None known.

**Nearby: -**

Pub with food: - **Unknown.**

Shops: - **Unknown.**

Supermarket: - **Unknown.**

Camp site: - **Unknown.**

Nearest bus stop/train station: - **Unknown.**

Water tap: - **Unknown.**

Rubbish disposal: - **Unknown.**

Toilets: - **Unknown.**

Showers: - **Unknown.**

Other: - **Unknown.**

**Charges: -**

Boating licence: - You will need a C&RT licence to use the canal. A variety of these are available from: - [www.canalrivertrust.org.uk/boating/licensing](http://www.canalrivertrust.org.uk/boating/licensing) (Some canoeists may have an alternative permit)

Boat launching each way: - **Free.**

Vehicle parking: - **Free.**

**Navigational Hazards:-**

None known.

The date of the photo/s below is: - February 2015.



Index No. <b>26</b>	<b>Waterway &amp; Location</b> Shropshire Union Canal ~ Market Drayton; Sports & Leisure Club (Landing)	Grade <b>2d</b>
<b>Latitude:</b> - N 52.90838	<b>Longitude:</b> - W 002.47293	
<b>Nearest place:</b> - Market Drayton	<b>Photos:</b> - Three. 16.02.2015 ~ 14.00 pm	
<b>Contact name:</b> -	<b>Region:</b> - Inland England	
<b>Phone No:</b> - 01630 652786	<b>Mobile:</b> - N/A	
<b>Email:</b> -	<b>Fax No:</b> - N/A	
<b>Website:</b> - <a href="http://www.draytonsportsclub.co.uk">www.draytonsportsclub.co.uk</a>		
<p><b>Landing Details:</b> - Grade: - 2d                      Compiled by DMS ~ February 2015</p> <p>Description: - An excellent towpath grass bank Landing Place with galvanised piles edges. Most suitable for one day or week-end boating for local residents. (Left photo below)</p> <p>Access and availability: - Public unrestricted free usage, belongs to the navigation and available any time during daylight hours. (Very quiet locality).</p> <p>Drop height to the water: - About 30 cm.</p> <p>Amount of boat manoeuvring space: - Sufficient.</p> <p>Distance from vehicle to the water: - About 15 Mts.</p> <p>Quality, surface, and description of boat carrying route: - Park just before the bridge to unload, carry your boat down the concrete steps to the towpath and launch. Alternatively drive over the bridge and carry your boat down the sloping green and launch from the offside bank if there are no moored boats in the way. Having unloaded either park at a suitable kerb or on the Leisure Club car park if they have agreed. (Center photo)</p> <p>Notes: - Have a look for yourself, zoom in on the map above and switch to satellite view.</p>		
<p><b>Directions:</b> - Post code for SatNav: - TF9 1HH ~ very urban location.</p> <p>Address: - Drayton Sports &amp; Leisure Club, Betton Road, Market Drayton, Shropshire.</p> <p>Parking location for vehicle: - Leisure Club Car Park. (Right photo)</p> <p>Parking spaces available: - Plenty of space.</p> <p>Options for trailers: - May be parked attached to your car or alongside or close to your car.</p> <p>Parking security: - Open public space in clear view of anyone passing.</p> <p>Wheel clamps, or other trailer securings are: - Strongly recommended if you have any and use a trailer.</p> <p>Parking period limits: - Negotiable.</p>		
<p><b>Suitable Boats:</b> -</p> <p>Good for canoes, kayaks, dinghies, small inflatables, and other portable boats with paddles. (Unsuitable for larger boats)</p>		



**Local facilities on-site: -**

None known.

**Nearby: -**

Pub with food: - **Unknown.**

Shops: - **Unknown.**

Supermarket: - **Unknown.**

Camp site: - **Unknown.**

Nearest bus stop/train station: - **Unknown.**

Water tap: - **Unknown.**

Rubbish disposal: - **Unknown.**

Toilets: - **Unknown.**

Showers: - **Unknown.**

Other: - **Unknown.**

**Charges: -**

Boating licence: - You will need a C&RT licence to use the canal. A variety of these are available from: - [www.canalrivertrust.org.uk/boating/licensing](http://www.canalrivertrust.org.uk/boating/licensing) (Some canoeists may have an alternative permit)

Boat launching each way: - **Free.**

Vehicle Parking: - **Enquire.**

Trailer Parking: - **Enquire.**

**Navigational Hazards:-**

None known.

The date of the photo/s below is: - February 2015.



Index No. <b>27</b>	<b>Waterway &amp; Location</b> Shropshire Union Canal ~ Market Drayton; Talbot Wharf boatyard (Slipway)	Grade <b>3a</b>
<b>Latitude:</b> - N 52.90803	<b>Longitude:</b> - W 002.47166	
<b>Nearest place:</b> - Market Drayton	<b>Photo's:</b> - Three. 20.11.2014 ~ 13.00	
<b>Contact name:</b> - Lisa or Tim Machin	<b>Region:</b> - Inland England	
<b>Phone No:</b> - 01630 652641	<b>Mobile:</b> -	
<b>Email:</b> - <i>No entries</i>	<b>Fax No (Email):</b> - machin@talbotwharf.co.uk	
<b>Website:</b> - <a href="http://www.talbotwharf.co.uk">www.talbotwharf.co.uk</a>	<i>Nb. The marina was invited to review all the details.</i>	
<p><b>Ramp Description:</b> - Grade: - 3a Updated by DMS ~ December 2014</p> <p>Slipway access: - Private, property of C&amp;RT and available from Talbot Wharf boatyard by prior arrangement, please book. 0930 - 1730 Mon – Fri: 0900 – 1330 Sat. (Closed Sun).</p> <p>Type: - Good quality but challenging concrete slipway dug into the bank. (Photo below)</p> <p>Slipway useable width: - 2.4 Mts. (Check your trailer width, it may be a tight fit).</p> <p>Length of the slope above the water: - 2 Mts</p> <p>Drop to the water: - 20 cm.</p> <p>Therefore gradient above the water: - 1:10</p> <p>Length of the slope below the water: - 4 Mts. (Ends level with the bank)</p> <p>Depth at the end of the underwater slope: - 60 cm.</p> <p>Therefore underwater gradient: - 1:6</p> <p>What's at the end of the concrete: - Sudden drop to 1.4 Mts into mud.</p>		
<p>Surface &amp; quality of vehicle manoeuvring area: - A layer of thin turf, covering good compacted gravel &amp; grit on top of hardcore.</p> <p>Amount of trailer manoeuvring space: - Fairly easy. Looking at the photo with the swans, reverse through the distant gates off the car park and curve onto the very challenging narrow slipway.</p> <p>Type of crew boarding facility &amp; quality: - Remove your trailer, pull the boat back into the slip and use the wharf in the excellent slip cutting.</p> <p>Height above the water: - 20 cm.</p> <p>Distance for carrying portable boats: - You can unload your boat and lower it straight onto the water.</p> <p>Notes: - From the information given, remember to consider possible retrieval problems. Have a look for yourself, zoom in on the map above and switch to satellite view. (The two red narrowboats have long gone).</p>		
<p><b>Directions:</b> - Post code for SatNav: - TF9 1HN ~ Very urban location.</p> <p>Address: - Holidays Afloat Ltd., Talbot Wharf, Newcastle Road, Market Drayton, Shropshire. TF9 1HN Site is off the A53 at Market Drayton.</p> <p>Parking location - vehicle: - Site car park. (Photo below)</p> <p>Parking spaces available for: - Four or five units.</p> <p>Parking for trailer: - Probably alongside your car, but may be elsewhere on the site.</p> <p>Parking security: - Enclosed private and staffed, gated, but only locked overnight. Gate can be climbed over.</p> <p>Wheel clamps, or other trailer securings are: - Strongly recommended if you have any.</p> <p>Parking period limits: - Negotiable.</p>		

**Ramp Type: -**

Suitability for residential cabin boats, up to about 22ft – **Very challenging.** (Unsuitable for larger boats)

For canoes, dinghies, small inflatables, other portable boats with paddles; and portable RIB's, heavy dinghies, and other low height boats with engines: - **Excellent.**

**Local facilities for: -**

On-site: - **Calor gas and a small chandlery, and camping for canoeists.**

Nearby: - **Just across the canal is a C&RT facilities block with water tap, Elsan disposal, rubbish disposal, overnight moorings and toilets.**

The nearest bus stop is across the road, and a pub with food is next door. In town is petrol a supermarket and shops, chippy, Chinese, market, chemist & banks.

**Charges: -**

Boating licence: - **You will need a C&RT licence to use the canal.** A variety of these are available from: - [www.canalrivertrust.org.uk/boating/licensing](http://www.canalrivertrust.org.uk/boating/licensing)

Slipping cost each way: - **£12.50.** Please check.

Group canoe launching each way: - **Free.** Please check.

Individual canoe launching each way: - **Free.** Please check.

Vehicle Parking: - **Per day: - £2.00. Per week: - £10.00.** Please check.

Trailer Parking: - **Included.**

**Navigational Hazards:-**

**None known.**

The date of the pricing above & photo/s below is: - **November 2014.**



Index No. <b>28</b>	<b>Waterway &amp; Location</b> Shropshire Union Canal ~ Market Drayton; Tyrley Locks (Landing)	Grade <b>3c</b>
<b>Latitude:</b> - N 52.88889	<b>Longitude:</b> - W 002.46162	
<b>Nearest place:</b> - Market Drayton	<b>Photos:</b> - Three. 16.02.2015 ~ 14.45 pm	
<b>Contact name:</b> - N/A	<b>Region:</b> - Inland England	
<b>Phone No:</b> - N/A	<b>Mobile:</b> - N/A	
<b>Email:</b> - None.	<b>Fax No:</b> - N/A	
<b>Website:</b> - None.		
<p><b>Landing Details:</b> - Grade: - 3c                      Compiled by DMS ~ February 2015</p> <p>Description: - An excellent concrete towpath bank Landing Place underneath a bridge, with heavy steel protectors. Suitable for one day or week-end boating for everyone. (Left photo below)</p> <p>Access and availability: - Public unrestricted free usage, belongs to the navigation and available any time during daylight hours. (Very quiet locality).</p> <p>Drop height to the water: - About 30 cm.</p> <p>Amount of boat manoeuvring space: - Ample.</p> <p>Distance from vehicle to the water: - About 20 Mts.</p> <p>Quality, surface, and description of boat carrying route: - Stop to unload your boat on the wharf alongside the locks which was under development when I visited. (Center photo). Carry down the adequate broad steps, or the concrete slope, and launch under the bridge. However this is between two locks and you may prefer to carry your boat further to the bottom of the lower lock. Alternatively you may want to go a shorter distance in the opposite direction from the start, and launch above the top lock.</p> <p>Notes: - Have a look for yourself, zoom in on the map above and switch to satellite view.</p>		
<p><b>Directions:</b> - Post code for SatNav: - No post code, use co-ordinates ~ rural location.</p> <p>Address: - Tyrley Locks, Tyrley Road, Market Drayton, Shropshire.</p> <p>Parking location for vehicle: - Casual parking bays off the lane and close to the locks. Compressed mud, very uneven and with large deep puddles if wet. You may need a 4x4 to avoid getting stuck. (Right photo). There are better parking bays closer to the lock, but they are now reserved for permanent moorers.</p> <p>Parking spaces available: - Plenty of space.</p> <p>Options for trailers: - May be parked alongside or close to your car.</p> <p>Parking security: - Open public space in clear view of anyone passing.</p> <p>Wheel clamps, or other trailer securings are: - Desirable if you have any and use a trailer.</p> <p>Parking period limits: - Unrestricted.</p>		
<p><b>Suitable Boats:</b> -</p> <p>Adequate for canoes &amp; kayaks. (Unsuitable for larger boats)</p>		

**Local facilities on-site: -**

None known.

**Nearby: -**

Pub with food: - **Unknown.**

Shops: - **Unknown.**

Supermarket: - **Unknown.**

Camp site: - **Unknown.**

Nearest bus stop/train station: - **Unknown.**

Water tap: - **Unknown.**

Rubbish disposal: - **Unknown.**

Toilets: - **Unknown.**

Showers: - **Unknown.**

Other: - **Unknown.**

**Charges: -**

Boating licence: - You will need a C&RT licence to use the canal. A variety of these are available from: - [www.canalrivertrust.org.uk/boating/licensing](http://www.canalrivertrust.org.uk/boating/licensing) (Some canoeists may have an alternative permit)

Boat launching each way: - **Free.**

Vehicle & trailer parking: - **Free.**

**Navigational Hazards:-**

None known.

The date of the photo/s below is: - February 2015.





Index No. <b>29</b>	<b>Waterway &amp; Location</b> Shropshire Union Canal ~ Adbaston; Shebdon Bridge (Landing)	Grade <b>3d</b>
<b>Latitude:</b> - N 52.83200°	<b>Longitude:</b> - W 002.35143°	
<b>Nearest place:</b> - Adbaston hamlet	<b>Photos:</b> - Three. 23.02.2015 ~ 10.00	
<b>Contact name:</b> - N/A	<b>Region:</b> - Inland England	
<b>Phone No:</b> - N/A	<b>Mobile:</b> - N/A	
<b>Email:</b> - None.	<b>Fax No:</b> - N/A	
<b>Website:</b> - None.		
<p><b>Landing Details:</b> - Grade: - 3d                      Compiled by DMS ~ February 2015</p> <p>Description: - An excellent towpath grass bank Landing Place with concrete blocks edges, overgrown with turf and weeds. (Left photo below). The site is suitable for one day or week-end boating for everyone.</p> <p>Access and availability: - Public unrestricted free usage, belongs to the navigation and available any time during daylight hours. (Very quiet locality).</p> <p>Drop height to the water: - About 30 cm.</p> <p>Amount of boat manoeuvring space: - Very challenging.</p> <p>Distance from vehicle to the water: - Depending on where you park, about 70 Mts.</p> <p>Quality, surface, and description of boat carrying route: - Having unloaded your boat at the lay-by on a very quiet lane, carry it over the bridge and through the narrow gate on your right. Keeping one hand on the handrail, carry your boat carefully down the 12 steep concrete steps to the towpath at the bottom where you can easily launch. This may be very difficult with canoes, and you will need to be quite agile. (Center photo)</p> <p>Notes: - Have a look for yourself on Google maps – Street view.</p>		
<p><b>Directions:</b> - Post code for SatNav: - No post code, use co-ordinates ~ very rural location.</p> <p>Address: - Shebdon Bridge 44, Adbaston, Nr. Newport, Staffordshire.</p> <p>Parking location for vehicle: - Rough casual lay-bys/wide verges, close to the bridge. Can be very muddy if wet. (Right photo)</p> <p>Parking spaces available: - Four or five vehicles.</p> <p>Options for trailers: - Not suitable for this location due to narrow lane and verges.</p> <p>Parking security: - Open public space in clear view of anyone passing.</p> <p>Parking period limits: - Unrestricted.</p>		
<p><b>Suitable Boats:</b> -</p> <p>Challenging for kayaks, very challenging for canoes. (Unsuitable for larger boats)</p>		



**Local facilities on-site: -**

None known.

**Nearby: -**

Pub with food: - **Unknown.**

Shops: - **Unknown.**

Supermarket: - **Unknown.**

Camp site: - **Unknown.**

Nearest bus stop/train station: - **Unknown.**

Water tap: - **Unknown.**

Rubbish disposal: - **Unknown.**

Toilets: - **Unknown.**

Showers: - **Unknown.**

Other: - **Unknown.**

**Charges: -**

Boating licence: - You will need a C&RT licence to use the canal. A variety of these are available from: - [www.canalrivertrust.org.uk/boating/licensing](http://www.canalrivertrust.org.uk/boating/licensing) (Some canoeists may have an alternative permit)

Boat launching each way: - **Free.**

Vehicle Parking: - **Free.**

**Navigational Hazards:-**

None known.

The date of the photo/s below is: - February 2015.



Index No.	<b>Waterway &amp; Location</b> Shropshire Union Canal ~ High Offley; Anchor Inn (Landing)	Grade <b>2a</b>
<b>30</b>		
<b>Latitude:</b> - N 52.82769°	<b>Longitude:</b> - W 002.33527°	
<b>Nearest place:</b> - High Offley hamlet	<b>Photos:</b> - Three. 23.02.2015 ~ 10.45 am	
<b>Contact name:</b> - Mrs Cliff	<b>Region:</b> - Inland England	
<b>Phone No:</b> - 01785 284569	<b>Mobile:</b> - N/A	
<b>Email:</b> - None.	<b>Fax No:</b> - N/A	
<b>Website:</b> - None.	<b>Nb. The landlady agreed all the details.</b>	
<p><b>Landing Details:</b> - Grade: -                      Compiled by DMS ~ February 2015</p> <p>Description: - An good towpath grass bank Landing Place with concrete block edges, partly overgrown with turf &amp; weeds. (Left photo below) The site is suitable for one day boating, for everyone and possibly for longer?</p> <p>Access and availability: - Public unrestricted free usage, belongs to the navigation and available any time during daylight hours. (Very quiet locality). However parking is private and needs to be booked – see below.</p> <p>Drop height to the water: - About 40 cm.</p> <p>Amount of boat manoeuvring space: - Sufficient.</p> <p>Distance from vehicle to the water: - Depending on where you park, about 55 Mts.</p> <p>Quality, surface, and description of boat carrying route: - Having parked on the excellent asphalt car park, carry your boat through the gate by the pub (right photo), and down the good flagstone path between the picnic tables. Then through a second gate and down a short brick path onto the towpath (center photo). Turn left and carry your boat along the compacted gravel towpath, past any moored boats, and launch where there is space – probably by the bridge.</p> <p>Notes: - Have a look for yourself, zoom in on the map above and switch to satellite view.</p>		
<p><b>Directions:</b> - Post code for SatNav: - ST20 0NG ~ very rural location.</p> <p>Address: - The Anchor Inn, Peggs Lane, High Offley, Nr. Newport, Staffordshire.</p> <p>Parking location for vehicle: - Small pub car park. May be busy in summer so you will need to phone and book a space, especially if you are hoping to park overnight. (Right photo)</p> <p>Parking spaces available: - Two or three vehicles.</p> <p>Options for trailers: - Uncertain, perhaps the large grass area alongside the carpark.</p> <p>Parking security: - Enclosed private and staffed; gated but only locked overnight. The staff are very observant and will investigate strangers.</p> <p>Wheel clamps, or other trailer securings are: - Suggested if you have any and use a trailer.</p> <p>Parking period limits: - Negotiable. Not keen on overnight parking, but you may be able to persuade her.</p>		
<p><b>Suitable Boats:</b> -</p> <p>Excellent for canoes, kayaks, dinghies, small inflatables, and other portable boats with paddles. (Unsuitable for larger boats).</p>		

**Local facilities on-site: -**

Public house.

Toilets: - In the pub.

Rubbish disposal: - At the pub.

Water tap: - Water may be available from the pub.

**Nearby: -**

Shops: - Unknown.

Supermarket: - Unknown.

Camp site: - Unknown.

Nearest bus stop/train station: - Unknown.

Showers: - Unknown.

Other: - Unknown.

**Charges: -**

Boating licence: - You will need a C&RT licence to use the canal. A variety of these are available from: - [www.canalrivertrust.org.uk/boating/licensing](http://www.canalrivertrust.org.uk/boating/licensing) (Some canoeists may have an alternative permit)

Boat launching each way: - Free.

Vehicle Parking: - Per day: - £2.00, and you will also be expected to purchase a drink.

**Navigational Hazards:-**

None known.

The date of the pricing above & photo/s below is: - February 2015.



Index No. <b>31</b>	<b>Waterway &amp; Location</b> Shropshire Union Canal ~ High Offley; Lambarts Bridge (Landing)	Grade <b>2d</b>
<b>Latitude:</b> - N 52.82464°	<b>Longitude:</b> - W 002.32464°	
<b>Nearest place:</b> - High Offley hamlet.	<b>Photos:</b> - Three. 23.02.2015 ~ 13.02 pm	
<b>Contact name:</b> - N/A	<b>Region:</b> - Inland England	
<b>Phone No:</b> - N/A	<b>Mobile:</b> - N/A	
<b>Email:</b> - None	<b>Fax No:</b> - N/A	
<b>Website:</b> - None.		
<p><b>Landing Details:</b> - Grade: - 2d                      Compiled by DMS ~ February 2015</p> <p>Description: - An excellent towpath grass bank Landing Place with galvanised piles edges, partly overgrown with turf and weeds. (Left photo below) The site is suitable for one day or week-end boating for everyone.</p> <p>Access and availability: - Public unrestricted free usage, belongs to the navigation and available any time during daylight hours. (Very quiet locality).</p> <p>Drop height to the water: - About 40 cm.</p> <p>Amount of boat manoeuvring space: - Ample.</p> <p>Distance from vehicle to the water: - About 60 Mts.</p> <p>Quality, surface, and description of boat carrying route: - From the lay-by, carry your boat along the lane towards the level bridge but turn left through the latched steel gate before you cross it. Then carry your boat down the long, wide, chippings and grit path to the towpath and launch. The path is a bit steep at the top and covered with rotted vegetation at the bottom, making it muddy and slippery if wet.</p> <p>Notes: - Have a look for yourself on Google maps – Street view.</p>		
<p><b>Directions:</b> - Post code for SatNav: - No post code, use co-ordinates ~ very rural location.</p> <p>Address: - Lambarts Bridge 41, Grub Street, High Offley, Nr. Newport, Staffordshire.</p> <p>Parking location for vehicle: - Small casual lay-by. May be muddy when wet. (Right photo)</p> <p>Parking spaces available: - One or two vehicles.</p> <p>Options for trailers: - Not suitable for this location due to limited parking space.</p> <p>Parking security: - Open public space in clear view of anyone passing.</p> <p>Parking period limits: - Unrestricted.</p>		
<p><b>Suitable Boats:</b> -</p> <p>Good for canoes, kayaks, dinghies, small inflatables, and other portable boats with paddles. (Unsuitable for larger boats)</p>		



**Local facilities on-site: -**

None known.

**Nearby: -**

Pub with food: - **Unknown.**

Shops: - **Unknown.**

Supermarket: - **Unknown.**

Camp site: - **Unknown.**

Nearest bus stop/train station: - **Unknown.**

Water tap: - **Unknown.**

Rubbish disposal: - **Unknown.**

Toilets: - **Unknown.**

Showers: - **Unknown.**

Other: - **Unknown.**

**Charges: -**

Boating licence: - You will need a C&RT licence to use the canal. A variety of these are available from: - [www.canalrivertrust.org.uk/boating/licensing](http://www.canalrivertrust.org.uk/boating/licensing) (Some canoeists may have an alternative permit)

Boat launching each way: - **Free.**

Vehicle Parking: - **Free.**

**Navigational Hazards:-**

None known.

The date of the photo/s below is: - February 2015



Index No. <b>32</b>	<b>Waterway &amp; Location</b> Shropshire Union Canal ~ Norbury; Double Culvert Bridge (Landing)	Grade <b>3c</b>
<b>Latitude:</b> - N 52.81494°	<b>Longitude:</b> - W 002.31392°	
<b>Nearest place:</b> - Norbury village	<b>Photos:</b> - Three. 23.02.2015 ~ 11.45 am	
<b>Contact name:</b> - N/A	<b>Region:</b> - Inland England	
<b>Phone No:</b> - N/A	<b>Mobile:</b> - N/A	
<b>Email:</b> - None	<b>Fax No:</b> - N/A	
<b>Website:</b> - None		
<p><b>Landing Details:</b> - Grade: - 3c                      Compiled by DMS ~ February 2015</p> <p>Description: - An excellent towpath grass bank Landing Place with concrete blocks edges or galvanised pilings, depending on which way you go, partly overgrown with turf and weeds and in a deep cutting. (Left photo below) The site is suitable for one day or week-end boating for everyone.</p> <p>Access and availability: - Public unrestricted free usage, belongs to the navigation and available any time during daylight hours.</p> <p>Drop height to the water: - About 30 cm.</p> <p>Amount of boat manoeuvring space: - Ample.</p> <p>Distance from vehicle to the water: - Depending on where you park, about 70 Mts.</p> <p>Quality, surface, and description of boat carrying route: - From the car park, carry your boat to the end of the excellent parking area and through the gate down the wide, long, sloping path down to the towpath. (Center photo). The path is of chippings and grit, steep at the top, and covered with rotting vegetation at the bottom making it very muddy and slippery when wet. There is a bench seat half way down where you can rest. The grass bank to launch from is better nearer the bridge where the bank is edged with the galvanised pilings.</p> <p>Notes: - Have a look for yourself on Google maps – Street view.</p>		
<p><b>Directions:</b> - Post code for SatNav: - No post code, use co-ordinates ~ rural location.</p> <p>Address: - Double Culvert Bridge 40, A519, Norbury, Staffordshire.</p> <p>Parking location for vehicle: - Good large parking area with asphalt surface, close to the bridge. (Right photo)</p> <p>Parking spaces available: - Eight or nine.</p> <p>Options for trailers: - May be parked attached, alongside or close to your car.</p> <p>Parking security: - Open public space in clear view of anyone passing.</p> <p>Wheel clamps, or other trailer securings are: - Strongly recommended if you have any and use a trailer.</p> <p>Parking period limits: - Unrestricted.</p>		
<p><b>Suitable Boats:</b> -</p> <p>Adequate for canoes &amp; kayaks. (Unsuitable for larger boats)</p>		



**Local facilities on-site: -**

None known.

**Nearby: -**

Pub with food: - **Unknown.**

Shops: - **Unknown.**

Supermarket: - **Unknown.**

Camp site: - **Unknown.**

Nearest bus stop/train station: - **Unknown.**

Water tap: - **Unknown.**

Rubbish disposal: - **Unknown.**

Toilets: - **Unknown.**

Showers: - **Unknown.**

Other: - **Unknown.**

**Charges: -**

Boating licence: - You will need a C&RT licence to use the canal. A variety of these are available from: - [www.canalrivertrust.org.uk/boating/licensing](http://www.canalrivertrust.org.uk/boating/licensing) (Some canoeists may have an alternative permit)

Boat launching each way: - **Free.**

Vehicle & trailer parking: - **Free.**

**Navigational Hazards:-**

None known.

The date of the photo/s below is: - February 2015.



Index No. <b>33</b>	<b>Waterway &amp; Location</b> Shropshire Union Canal ~ Norbury; The Junction Inn (Landing)	Grade <b>1b</b>
<b>Latitude:</b> - N 52.80268°	<b>Longitude:</b> - W 002.30721°	
<b>Nearest place:</b> - Norbury village	<b>Photos:</b> - Three. 23.02.2015 ~ 12.30 pm	
<b>Contact name:</b> - Alison Frizzell	<b>Region:</b> - Inland England	
<b>Phone No:</b> - 01785 284288	<b>Mobile:</b> - N/A	
<b>Email:</b> - junctioninn1@hotmail.co.uk	<b>Fax No:</b> - N/A	
<b>Website:</b> - www.norburyjunction.co.uk		
<p><b>Landing Details:</b> - Grade: - 1b                      Compiled by DMS ~ February 2015</p> <p>Description: - An excellent towpath grass bank Landing Place with concrete blocks edges. (Left photo below) The site is suitable for one day or week-end boating for everyone.</p> <p>Access and availability: - Boat launching is public unrestricted free usage, belongs to the navigation and available any time during daylight hours. However the car park is private and belongs to the inn. If you have it in mind to park overnight please phone and make arrangements as there may be an additional charge. Very busy in summer so you will need to arrive early.</p> <p>Drop height to the water: - About 30 cm.</p> <p>Amount of boat manoeuvring space: - Ample.</p> <p>Distance from vehicle to the water: - Depending on where you park to unload, about 10 Mts.</p> <p>Quality, surface, and description of boat carrying route: - From your parking place, carry your boat across the towpath/track then down the good grass bank close to the pub to avoid the steps, and launch. (Center photo).</p> <p>Notes: - Have a look for yourself on Google maps – Street view.</p>		
<p><b>Directions:</b> - Post code for SatNav: - ST20 0PN ~ rural location.</p> <p>Address: - The Junction Inn, Norbury Junction, Nr. Stafford, Shropshire.</p> <p>Parking location for vehicle: - The very large asphalt Inn car park. (Right photo). There is also limited lay-by parking opposite the car park.</p> <p>Parking spaces available: - Plenty of space, but arrive early in summer.</p> <p>Options for trailers: - May be parked attached to your car or alongside or close to your car, but check with the landlady first to see if she will permit parking.</p> <p>Parking security: - Open public space in clear view of anyone passing.</p> <p>Wheel clamps, or other trailer securings are: - Strongly recommended if you have any and use a trailer.</p> <p>Parking period limits: - Negotiable.</p>		
<p><b>Suitable Boats:</b> -</p> <p>Good for canoes, kayaks, dinghies, small inflatables, and other portable boats with paddles.</p> <p>Adequate for portable RIB's, heavy dinghies, and other low height boats with engines - as long as you can carry them.</p>		

**Local facilities on-site: -**

None known.

**Nearby: -**

Pub with food: - **Unknown.**

Shops: - **Unknown.**

Supermarket: - **Unknown.**

Camp site: - **Unknown.**

Nearest bus stop/train station: - **Unknown.**

Water tap: - **Unknown.**

Rubbish disposal: - **Unknown.**

Toilets: - **Unknown.**

Showers: - **Unknown.**

Other: - **Unknown.**

**Charges: -**

Boating licence: - You will need a C&RT licence to use the canal. A variety of these are available from: - [www.canalrivertrust.org.uk/boating/licensing](http://www.canalrivertrust.org.uk/boating/licensing) (Some canoeists may have an alternative permit)

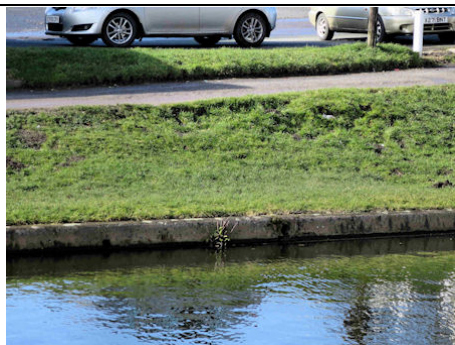
Boat launching each way: - **Free.**

Vehicle Parking: - Request permission to park to go boating when you purchase your drink or meal, there may be an additional charge for overnight parking.

**Navigational Hazards:-**

None known.

The date of the pricing above & photo/s below is: - February 2015.



Index No.	<b>Waterway &amp; Location</b>	Grade
<b>34</b>	Shropshire Union Canal ~ Gnosall: Navigation Inn (Landing)	<b>3b</b>
<b>Latitude:</b> - N 52.78070°		<b>Longitude:</b> - W 002.26932°
<b>Nearest place:</b> - Gnosall		<b>Photos:</b> - Three. 23.02.2015 ~ 13.30 pm
<b>Contact name:</b> - Rebecca		<b>Region:</b> - Inland England
<b>Phone No:</b> - 01785 822327		<b>Mobile:</b> - N/A
<b>Email:</b> - None.		<b>Fax No:</b> - N/A
<b>Website:</b> - <a href="http://www.thegnosallnavvy.co.uk">www.thegnosallnavvy.co.uk</a>		
<p><b>Landing Details:</b> - Grade: - 3b                      Compiled by DMS ~ February 2015</p> <p>Description: - An excellent towpath grass bank Landing Place with galvanised piles edges, overgrown with turf and weeds. (Left photo below) The site is suitable for one day or week-end boating for everyone.</p> <p>Access and availability: - Boat launching is public unrestricted free usage, belongs to the navigation and available any time during daylight hours. However the car park is private and belongs to the inn. If you have it in mind to park overnight please phone and make arrangements as there may be an additional charge. Very busy in summer so you will need to arrive early.</p> <p>Drop height to the water: - About 40 cm.</p> <p>Amount of boat manoeuvring space: - Very challenging down the steps.</p> <p>Distance from vehicle to the water: - Depending on where you can park, about 15 Mts.</p> <p>Quality, surface, and description of boat carrying route: - From the excellent asphalt car park, carry your boat to the gap in the fence at the top of the canal bank. Holding onto the excellent handrails, carry your boat carefully down the steep flight of 16 blue brick steps to the chippings &amp; grit towpath at the bottom. Find a place between any moored boats and launch. (Center photo)</p> <p>Notes: - Have a look for yourself on Google maps – Street view.</p>		
<p><b>Directions:</b> - Post code for SatNav: - ST20 0BN ~ urban location.</p> <p>Address: - The Navigation Inn, Newport Road, Gnosall, Stafford, Staffordshire</p> <p>Parking location for vehicle: - Large pub car park. (Right photo)</p> <p>Parking spaces available: - Plenty of space.</p> <p>Options for trailers: - May be parked attached to your car or alongside or close to your car, but check with the landlady first to see if she will permit parking</p> <p>Parking security: - Open and public but hidden from general public view.</p> <p>Wheel clamps, or other trailer securings are: - Strongly recommended if you have any and use a trailer.</p> <p>Parking period limits: - Negotiable.</p>		
<p><b>Suitable Boats:</b> -</p> <p>Very challenging for canoes &amp; kayaks. (Unsuitable for larger boats)</p>		



**Local facilities on-site: -**

Pub with food

Rubbish disposal: - At the pub.

Toilets: - At the pub

Shops: - Just along the street.

**Nearby: -**

Supermarket: - Unknown.

Camp site: - Unknown.

Nearest bus stop/train station: - Unknown.

Water tap: - Unknown.

Showers: - Unknown.

Other: - Unknown.

**Charges: -**

Boating licence: - You will need a C&RT licence to use the canal. A variety of these are available from: - [www.canalrivertrust.org.uk/boating/licensing](http://www.canalrivertrust.org.uk/boating/licensing) (Some canoeists may have an alternative permit)

Boat launching each way: - Free.

Vehicle & trailer parking: - Request permission to park to go boating when you purchase your drink or meal, there may be an additional charge for overnight parking.

**Navigational Hazards:-**

None known.

The date of the pricing above & photo/s below is: - February 2015



Index No. <b>35</b>	<b>Waterway &amp; Location</b> Shropshire Union Canal ~ Gnosall; Boat Inn (Landing)	Grade <b>3d</b>
<b>Latitude:</b> - N 52.77875°		<b>Longitude:</b> - W 002.26605°
<b>Nearest place:</b> - Gnosall		<b>Photos:</b> - Three. 23.02.2015 ~ 13.45 pm
<b>Contact name:</b> - Clare		<b>Region:</b> - Inland England
<b>Phone No:</b> - 01785 822208		<b>Mobile:</b> -
<b>Email:</b> - clare597@btinternet.com		<b>Fax No:</b> - N/A
<b>Website:</b> - www.boatinngnosallstafford.co.uk		
<p><b>Landing Details:</b> - Grade: - 3d                      Compiled by DMS ~ February 2015</p> <p>Description: - An excellent towpath grass bank Landing Place with galvanised piles edges. (Left photo below) The site is most suitable for one day or week-end boating for local residents.</p> <p>Access and availability: - Public unrestricted free usage, belongs to the navigation and available any time during daylight hours. (Very quiet locality).</p> <p>Drop height to the water: - About 30 cm.</p> <p>Amount of boat manoeuvring space: - Sufficient.</p> <p>Distance from vehicle to the water: - About 40 Mts.</p> <p>Quality, surface, and description of boat carrying route: - Park near the bridge to unload. From your parking place you can go through the access gate and down a couple of steps, and along the adequate hardcore &amp; grit path on to the towpath and launch. There is an alternative slightly longer path to avoid the steps which is better if dry, but it may be very muddy if wet. (Center photo)</p> <p>Notes: - Have a look for yourself on Google maps – Street view.</p>		
<p><b>Directions:</b> - Post code for SatNav: - ST20 0DA ~ urban location.</p> <p>Address: - The Boat Inn, Wharf Road, Gnosall, Staffordshire</p> <p>Parking location for vehicle: - Several options. There is a small pub car park which may be available when the pub is closed; there is casual lay-by parking for two or three cars at the bridge, (Right photo). Also lots of kerb parking in nearby streets.</p> <p>Parking spaces available: - Four or five vehicles.</p> <p>Options for trailers: - Not suitable for this location.</p> <p>Parking security: - Open public space in clear view of anyone passing.</p> <p>Parking period limits: - Unrestricted.</p>		
<p><b>Suitable Boats:</b> -</p> <p>Adequate for canoes &amp; kayaks. (Unsuitable for larger boats)</p>		



**Local facilities on-site: -**

**Nearby: -**

Pub with food: - [The Boat Inn](#)

Shops: - [Quarry Road](#).

Rubbish disposal: - [The Boat Inn](#)

Toilets: - [The Boat Inn](#)

Water tap: - [Water from the Inn](#).

Supermarket: - [Unknown](#).

Camp site: - [Unknown](#).

Nearest bus stop/train station: - [Unknown](#).

Showers: - [Unknown](#).

Other: - [Unknown](#).

**Charges: -**

Boating licence: - You will need a C&RT licence to use the canal. A variety of these are available from: - [www.canalrivertrust.org.uk/boating/licensing](http://www.canalrivertrust.org.uk/boating/licensing) (Some canoeists may have an alternative permit)

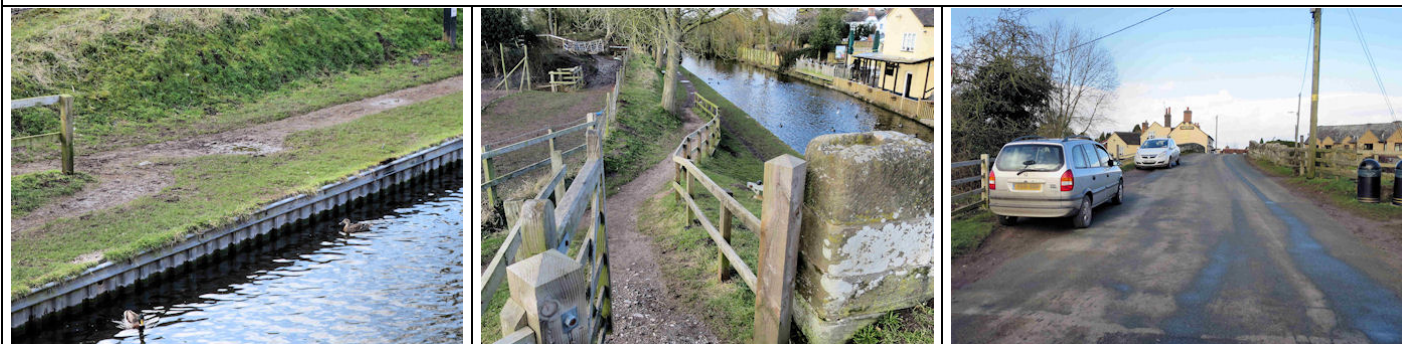
Boat launching each way: - [Free](#).

Vehicle Parking: - [Free](#).

**Navigational Hazards:-**

[None known](#).

The date of the photo/s below is: - February 2015.



Index No. <b>36</b>	<b>Waterway &amp; Location</b> Shropshire Union Canal ~ Church Eaton; Wood Eaton Bridge (Landing)	Grade <b>3c</b>
<b>Latitude:</b> - N 52.76100°	<b>Longitude:</b> - W 002.25197°	
<b>Nearest place:</b> - Church Eaton village	<b>Photos:</b> - Three. 23.02.2015 ~ 14.30 pm	
<b>Contact name:</b> - N/A	<b>Region:</b> - Inland England	
<b>Phone No:</b> - N/A	<b>Mobile:</b> - N/A	
<b>Email:</b> - None	<b>Fax No:</b> - N/A	
<b>Website:</b> - None		
<p><b>Landing Details:</b> - Grade: - 3c                      Compiled by DMS ~ February 2015</p> <p>Description: - A towpath grass bank Landing Place with galvanised piles edges in a deep cutting. It is excellent if dry but a bit muddy if wet. (Left photo below) The site is suitable for one day or week-end boating for everyone.</p> <p>Access and availability: - Public unrestricted free usage, belongs to the navigation and available any time during daylight hours. (Very quiet locality).</p> <p>Drop height to the water: - About 30 cm.</p> <p>Amount of boat manoeuvring space: - Ample.</p> <p>Distance from vehicle to the water: - If parking across the bridge, about 75 Mts.</p> <p>Quality, surface, and description of boat carrying route: - From your parking place, carry your boat along the good tarmac road to the path down to the canal. There are two paths – one each side of this very quiet lane. The South path is less muddy if it has been raining. It is quite long with good chippings and grit at the top, becoming covered with rotted vegetation at the bottom which turns into mud if wet. (Center photo).</p> <p>Notes: - Have a look for yourself on Google maps – Street view.</p>		
<p><b>Directions:</b> - Post code for SatNav: - No post code, use co-ordinates ~ very rural location.</p> <p>Address: - Wood Eaton Bridge 29, Broad Lane, Church Eaton, Staffordshire. The lane is used a lot by farm vehicles and may be quite muddy in winter.</p> <p>Parking location for vehicle: - Wide verges before and after the level bridge. (Right photo)</p> <p>Parking spaces available: - Four or five vehicles.</p> <p>Options for trailers: - Not suitable for this location due to the narrow lane and verges.</p> <p>Parking security: - Open public space in clear view of anyone passing.</p> <p>Parking period limits: - Unrestricted.</p>		
<p><b>Suitable Boats:</b> - Adequate for canoes &amp; kayaks. (Unsuitable for larger boats)</p>		

**Local facilities on-site: -**

None known.

**Nearby: -**

Pub with food: - **Unknown.**

Shops: - **Unknown.**

Supermarket: - **Unknown.**

Camp site: - **Unknown.**

Nearest bus stop/train station: - **Unknown.**

Water tap: - **Unknown.**

Rubbish disposal: - **Unknown.**

Toilets: - **Unknown.**

Showers: - **Unknown.**

Other: - **Unknown.**

**Charges: -**

Boating licence: - You will need a C&RT licence to use the canal. A variety of these are available from: - [www.canalrivertrust.org.uk/boating/licensing](http://www.canalrivertrust.org.uk/boating/licensing) (Some canoeists may have an alternative permit)

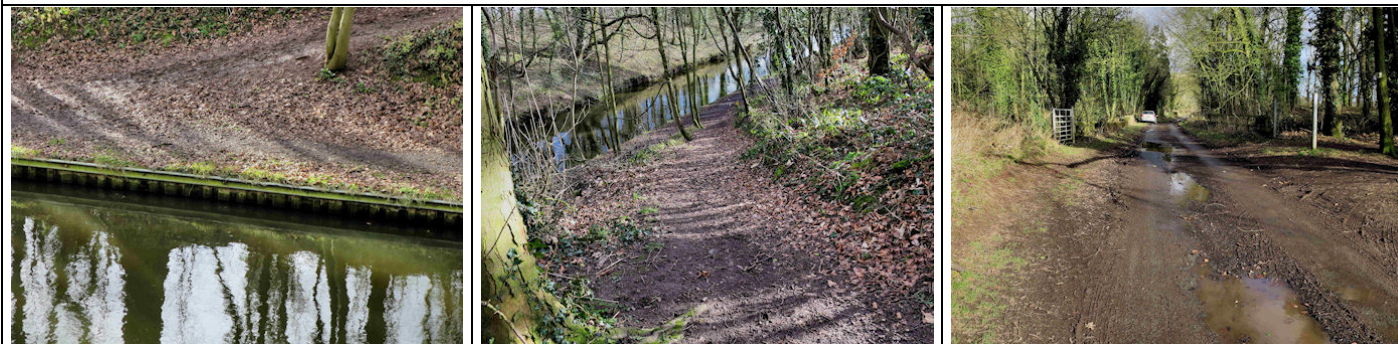
Boat launching each way: - **Free.**

Vehicle Parking: - **Free.**

**Navigational Hazards:-**

None known.

The date of the photo/s below is: - February 2015.



Index No. <b>37</b>	<b>Waterway &amp; Location</b> Shropshire Union Canal ~ Church Eaton; Turnover Bridge (Landing)	Grade <b>2d</b>
<b>Latitude:</b> - N 52.75214°	<b>Longitude:</b> - W 002.24949°	
<b>Nearest place:</b> - Church Eaton village	<b>Photos:</b> - Three. 23.02.2015 ~ 15.00 pm	
<b>Contact name:</b> - N/A	<b>Region:</b> - Inland England	
<b>Phone No:</b> - N/A	<b>Mobile:</b> - N/A	
<b>Email:</b> - None	<b>Fax No:</b> - N/A	
<b>Website:</b> - None		
<p><b>Landing Details:</b> - Grade: - 2d                      Compiled by DMS ~ February 2015</p> <p>Description: - An excellent towpath grass bank Landing Place with concrete edges, protected by a heavy steel boat fender. (Left photo below). If you move closer to the bridge the fender will be avoided, The site is most suitable for one day or week-end boating for everyone.</p> <p>Access and availability: - Public unrestricted free usage, belongs to the navigation and available any time during daylight hours. (Very quiet locality).</p> <p>Drop height to the water: - About 30 cm.</p> <p>Amount of boat manoeuvring space: - Ample.</p> <p>Distance from vehicle to the water: - Depending on where you park, about 55 Mts.</p> <p>Quality, surface, and description of boat carrying route: - From your parking place carry your boat along the tarmac road towards the bridge and find the towpath access on your right. The access paths are excellent grit, partly overgrown with turf at the bottom. Being a towpath changeover, you can go left or straight forward. Straight forward is shorter and easier and finishes close to the bridge. (Center photo).</p> <p>Notes: - Have a look for yourself on Google maps – Street view.</p>		
<p><b>Directions:</b> - Post code for SatNav: - No post code, use co-ordinates ~ very rural location.</p> <p>Address: - Turnover Bridge 26, Church Eaton Road, Church Eaton, Nr Stafford, Staffordshire.</p> <p>Parking location for vehicle: - Wide verge parking, plus a small casual lay-by at the bridge. (Right photo)</p> <p>Parking spaces available: - Four or five vehicles.</p> <p>Options for trailers: - Not suitable for this location due to the limited parking space.</p> <p>Parking security: - Open public space in clear view of anyone passing.</p> <p>Parking period limits: - Unrestricted.</p>		
<p><b>Suitable Boats:</b> -</p> <p>Excellent for canoes, kayaks, dinghies, small inflatables, and other portable boats with paddles. (Unsuitable for larger boats)</p>		



**Local facilities on-site: -**

None known.

**Nearby: -**

Pub with food: - **Unknown.**

Shops: - **Unknown.**

Supermarket: - **Unknown.**

Camp site: - **Unknown.**

Nearest bus stop/train station: - **Unknown.**

Water tap: - **Unknown.**

Rubbish disposal: - **Unknown.**

Toilets: - **Unknown.**

Showers: - **Unknown.**

Other: - **Unknown.**

**Charges: -**

Boating licence: - You will need a C&RT licence to use the canal. A variety of these are available from: - [www.canalrivertrust.org.uk/boating/licensing](http://www.canalrivertrust.org.uk/boating/licensing) (Some canoeists may have an alternative permit)

Boat launching each way: - **Free.**

Vehicle Parking: - **Free.**

**Navigational Hazards:-**

None known.

The date of the photo/s below is: - February 2015.



Index No. <b>38</b>	<b>Waterway &amp; Location</b> Shropshire Union Canal ~ Church Eaton; High Onn Bridge (Landing)	Grade <b>2c</b>
<b>Latitude:</b> - N 52.74917°	<b>Longitude:</b> - W 002.24612°	
<b>Nearest place:</b> - Church Eaton	<b>Photos:</b> - Three. 24.05.2015 ~ 1.00 pm	
<b>Contact name:</b> - N/A	<b>Region:</b> - Inland England	
<b>Phone No:</b> - N/A	<b>Mobile:</b> - N/A	
<b>Email:</b> - N/A	<b>Fax No:</b> - N/A	
<b>Website:</b> - N/A		
<p><b>Landing Details:</b> - Grade: - <b>2c</b>      Compiled by DMS ~ May 2015</p> <p>Description: - An excellent towpath grass bank Landing Place with overgrown galvanised piles edges. (Left photo below) The site is most suitable for one day or week-end boating for everyone.</p> <p>Access and availability: - Public unrestricted free usage, belongs to the navigation and available any time during daylight hours. (Very quiet locality).</p> <p>Drop height to the water: - About 30 cm.</p> <p>Amount of boat manoeuvring space: - Sufficient. Getting through the gate is the most difficult bit.</p> <p>Distance from vehicle to the water: - Depending on where you park, about 47 Mts.</p> <p>Quality, surface, and description of boat carrying route: - As the lane is quite narrow you will have to park on the grass verge before you unload. The verge slopes away from the road, but because of the close hedge you will need to unload from the road, but the lane is very quiet so this should not be a problem. Carry your boat up the good tarmac lane to the access path to the canal on your right. Ease it through the narrow gate onto the short grit &amp; sand path down to the canal towpath, and launch your boat (Center photo)</p> <p>Notes: - Have a look for yourself on Google maps – Street view.</p>		
<p><b>Directions:</b> - Post code for SatNav: - No post code, use co-ordinates.</p> <p>Address: - High Onn Bridge 24, High Street, Church Eaton, Staffordshire.</p> <p>Parking location for vehicle: - Wide rough grass verge, west side of the bridge. (Right photo)</p> <p>Parking spaces available: - Four or five vehicles.</p> <p>Options for trailers: - Not suitable for this location.</p> <p>Parking security: - Open public space in clear view of anyone passing.</p> <p>Parking period limits: - Unrestricted.</p>		
<p><b>Suitable Boats:</b> -</p> <p>Excellent for canoes, kayaks and small inflatables. (Unsuitable for larger boats)</p>		



**Local facilities on-site: -**

Unknown.

**Nearby: - (Options below)**

Pub with food: - Royal Oak pub in Church Eaton.

Toilets: - Royal Oak pub in Church Eaton.

Shops

Supermarket

Camp site

Nearest bus stop/train station

Water tap

Rubbish disposal

Showers

Other

**Charges: -**

Boating licence: - You will need a C&RT licence to use the canal. A variety of these are available from: - [www.canalrivertrust.org.uk/boating/licensing](http://www.canalrivertrust.org.uk/boating/licensing) (Some canoeists may have an alternative permit)

Group & individual boat launching each way: - Free.

Vehicle Parking: - Free.

**Navigational Hazards:-**

None known.

The date of the photo/s below is: - May 2015.



Index No. <b>39</b>	<b>Waterway &amp; Location</b> Shropshire Union Canal ~ Church Eaton; Little Onn Bridge (Landing)	Grade <b>2b</b>
<b>Latitude:</b> - N 52.74266°		<b>Longitude:</b> - W 002.23582°
<b>Nearest place:</b> - Church Eaton		<b>Photos:</b> - Three. 22.05.2015 ~ 11.15 am.
<b>Contact name:</b> - N/A		<b>Region:</b> - Inland England
<b>Phone No:</b> - N/A		<b>Mobile:</b> - N/A
<b>Email:</b> - N/A		<b>Fax No:</b> - N/A
<b>Website:</b> - None		
<p><b>Landing Details:</b> - Grade: - <b>2b</b>                      Compiled by DMS ~ May 2015</p> <p>Description: - An excellent towpath grass bank Landing Place with overgrown stone/concrete edges. (Left photo below) The site is most suitable for one day or week-end boating for everyone.</p> <p>Access and availability: - Public unrestricted free usage, belongs to the navigation and available any time during daylight hours. (Very quiet locality).</p> <p>Drop height to the water: - About 30 cm.</p> <p>Amount of boat manoeuvring space: - Sufficient. Getting through the gate is the hardest manoeuvre.</p> <p>Distance from vehicle to the water: - Depending on where you park, about 55 Mts.</p> <p>Quality, surface, and description of boat carrying route: - Assuming you are parked on the road at the junction, carry your boat over the bridge and through the access gate to the towpath on your left. Then down a short flight of good broad sand &amp; grit steps down to the towpath. (Center photo)</p> <p>Notes: - Have a look for yourself on Google maps – Street view.</p>		
<p><b>Directions:</b> - Post code for SatNav: - No post code, use co-ordinates</p> <p>Address: - Little Onn Bridge 24, Little Onn Road, Church Eaton, Staffordshire.</p> <p>Parking location for vehicle: - Either on the wide turning at the junction of the farm access drive with the lane, or perhaps on the field next to the bridge if you have planned a long trip. (Right photo)</p> <p>Parking spaces available: - Two or three vehicles.</p> <p>Options for trailers: - Possibly elsewhere at this location. Ask at the farm if you can park on the small field between the bridge and the basin.</p> <p>Parking security: - Open public space in clear view of anyone passing.</p> <p>Parking period limits: - Unrestricted.</p>		
<p><b>Suitable Boats:</b> -</p> <p>Excellent for canoes, kayaks, dinghies and small inflatables. (Unsuitable for larger boats)</p>		

**Local facilities on-site: -**

None.

**Nearby: - (Options below)**

Pub with food: - The Royal Oak pub in Church Eaton.

Toilets: - Royal Oak Pub.

Shops

Supermarket

Camp site

Nearest bus stop/train station

Water tap

Rubbish disposal

Showers

Other

**Charges: -**

Boating licence: - You will need a C&RT licence to use the canal. A variety of these are available from: - [www.canalrivertrust.org.uk/boating/licensing](http://www.canalrivertrust.org.uk/boating/licensing) (Some canoeists may have an alternative permit)

Group & individual boat launching each way: - Free.

Vehicle Parking: - Free.

**Navigational Hazards:-**

None known.

The date of the photo/s below is: - May 2015



Index No. 40	Waterway & Location Shropshire Union Canal ~ Wheaton Aston; Rye Hill Bridge	Grade 3c
<b>Latitude:</b> - N 52.73236°	<b>Longitude:</b> - W 002.22793°	
<b>Nearest place:</b> - Wheaton Aston village	<b>Photos:</b> - Three. 26.02.2015 ~ 15.45 pm	
<b>Contact name:</b> - N/A	<b>Region:</b> - Inland England	
<b>Phone No:</b> - N/A	<b>Mobile:</b> - N/A	
<b>Email:</b> - None.	<b>Fax No:</b> - N/A	
<b>Website:</b> - None.		
<p><b>Landing Details:</b> - Grade: - 3c                      Compiled by DMS ~ February 2015</p> <p>Description: - An adequate towpath, slightly bare grass bank Landing Place, with galvanised piles edges. (Left photo below) The site is most suitable for one day or week-end boating for everyone.</p> <p>Access and availability: - Public unrestricted free usage, belongs to the navigation and available any time during daylight hours. (Very quiet locality).</p> <p>Drop height to the water: - About 30 cm.</p> <p>Amount of boat manoeuvring space: - Sufficient for kayaks, challenging with canoes.</p> <p>Distance from vehicle to the water: - 60 Mts.</p> <p>Quality, surface, and description of boat carrying route: - Regardless of where you decide to finally park, stop to unload opposite the farm track by the bridge. Find the narrow access to the path leading down to the towpath. The path is a series of winding broad steps of timber frames infilled with chippings and grit all the way down to the towpath. (Center photo). At the towpath launch your boat.</p> <p>Notes: - Have a look for yourself on Google maps – Street view.</p>		
<p><b>Directions:</b> - Post code for SatNav: - No post code, use co-ordinates ~ very rural location.</p> <p>Address: - Rye Hill Bridge 22, Slab lane, Wheaton Aston, Staffordshire.</p> <p>Parking location for vehicle: - There are a couple of single wide grass verge places close to the bridge, (Right photo), but avoid parking in the turning space require by the farmer coming out of the track by the bridge. Round the corner at the top the lane gets a lot wider and provides plenty of additional kerb/verge parking.</p> <p>Parking spaces available: - One or two close to the bridge. Plenty of space round the corner.</p> <p>Options for trailers: - May be parked attached to your car round the corner.</p> <p>Parking security: - Open public space in clear view of anyone passing.</p> <p>Wheel clamps, or other trailer securings are: - Desirable if you have any and use a trailer.</p> <p>Parking period limits: - Unrestricted.</p>		
<p><b>Suitable Boats:</b> -</p> <p>Good for canoes &amp; kayaks. (Unsuitable for larger boats)</p>		



**Local facilities on-site: -**

None known.

**Nearby: -**

Pub with food: - **Unknown.**

Shops: - **Unknown.**

Supermarket: - **Unknown.**

Camp site: - **Unknown.**

Nearest bus stop/train station: - **Unknown.**

Water tap: - **Unknown.**

Rubbish disposal: - **Unknown.**

Toilets: - **Unknown.**

Showers: - **Unknown.**

Other: - **Unknown.**

**Charges: -**

Boating licence: - You will need a C&RT licence to use the canal. A variety of these are available from: - [www.canalrivertrust.org.uk/boating/licensing](http://www.canalrivertrust.org.uk/boating/licensing) (Some canoeists may have an alternative permit)

Boat launching each way: - **Free.**

Vehicle & trailer parking: - **Free.**

**Navigational Hazards:-**

None known.

The date of the photo/s below is: - February 2015.



Index No. <b>41</b>	<b>Waterway &amp; Location</b> Shropshire Union Canal ~ Wheaton Aston; Hartley Arms (Landing)	Grade <b>2c</b>
<b>Latitude:</b> - N 52.71375°		<b>Longitude:</b> - W 002.21509°
<b>Nearest place:</b> - Wheaton Aston village		<b>Photos:</b> - Three. 26.02.2015 ~ 15.15 pm
<b>Contact name:</b> - Unknown.		<b>Region:</b> - Inland England
<b>Phone No:</b> - 01785 840232		<b>Mobile:</b> - N/A
<b>Email:</b> - anoybrunt11@hotmail.co.uk		<b>Fax No:</b> - N/A
<b>Website:</b> - None.		
<p><b>Landing Details:</b> - Grade: - 2c                      Compiled by DMS ~ February 2015</p> <p>Description: - An excellent towpath grass bank Landing Place with galvanised piles edges. (Left photo below) The site is most suitable for one day or week-end boating for everyone.</p> <p>Access and availability: - Public unrestricted free usage, belongs to the navigation and available any time during daylight hours. However the pub car park is private and you will need to book in advance with the landlord, see charges below.</p> <p>Drop height to the water: - About 30 cm.</p> <p>Amount of boat manoeuvring space: - Ample.</p> <p>Distance from vehicle to the water: - About 20 Mts.</p> <p>Quality, surface, and description of boat carrying route: - Park to unload before you cross the bridge to the pub's excellent asphalt car park. There are good unloading places on both sides of the tarmac road. Carry your boat through the latched wooden gate on your left, and down the short grit &amp; sand good path to the towpath below and launch. (Center photo) Then park at the pub as previously arranged.</p> <p>Notes: - Have a look for yourself on Google maps – Street view.</p>		
<p><b>Directions:</b> - Post code for SatNav: - ST19 9NF ~ urban location.</p> <p>Address: - The Hartley Arms, 56 Long Street, Wheaton Aston, Nr Stafford, Staffordshire.</p> <p>Parking location for vehicle: - Pub car park. (Right photo)</p> <p>Parking spaces available: - Plenty of space.</p> <p>Options for trailers: - Enquire, may be parked alongside or close to your car if permitted.</p> <p>Parking security: - Open and public but hidden from general public view.</p> <p>Wheel clamps, or other trailer securings are: - Strongly recommended if you have any and use a trailer.</p> <p>Parking period limits: - Negotiable.</p>		
<p><b>Suitable Boats:</b> -</p> <p>Excellent for canoes, kayaks, dinghies, small inflatables, and other portable boats with paddles. (Unsuitable for larger boats)</p>		



**Local facilities on-site: -**

Pub with food: - [Hartley Arms](#).  
Toilets: - [In the pub](#).  
Rubbish disposal: - [Ask at the pub](#).

**Nearby: -**

Shops: - [Unknown](#).  
Supermarket: - [Unknown](#).  
Camp site: - [Unknown](#).  
Nearest bus stop/train station: - [Unknown](#).  
Water tap: - [Unknown](#).  
Showers: - [Unknown](#).  
Other: - [Unknown](#).

**Charges: -**

Boating licence: - [You will need a C&RT licence to use the canal. A variety of these are available from: - \[www.canalrivertrust.org.uk/boating/licensing\]\(http://www.canalrivertrust.org.uk/boating/licensing\) \(Some canoeists may have an alternative permit\)](#)

Boat launching each way: - [Free](#).

Vehicle Parking: - [Free, provided you purchase a drink or a meal. There may be an additional charge for overnight parking if it is permitted.](#)

Trailer Parking: - [Enquire](#).

**Navigational Hazards:-**

[None known.](#)

[The date of the pricing above & photo/s below is: - February 2015.](#)



Index No. <b>42</b>	<b>Waterway &amp; Location</b> Shropshire Union Canal ~ Brewood; Countrywide Cruisers (Slipway)	Grade <b>1b</b>
<b>Latitude:</b> - N 52.68071°	<b>Longitude:</b> - W 002.18130°	
<b>Nearest place:</b> - Brewood	<b>Photos:</b> - Three. 29.02.2015 ~ 12.15 pm	
<b>Contact name:</b> - William	<b>Region:</b> - Inland England	
<b>Phone No:</b> - 01902 850166	<b>Mobile:</b> -	
<b>Email:</b> - office@countrywide-cruisers.co.uk	<b>Fax No:</b> - 01902 851662	
<b>Website:</b> - www.countrywide-cruisers.co.uk		
<p><b>Ramp Description:</b> - Grade: - 1b      Compiled by DMS ~ February 2015</p> <p>Slipway Type: - Good concrete slipway entirely dug deep into the bank, angled across the canal, and finishing level with the bank. Suitable for anything from one day trips or holiday touring cruises. (Left photo below)</p> <p>Access: - Private, property of the marina and only available by prior arrangement, please phone and book. (Quiet locality.)</p> <p>Useable width: - 3.2 Mts.</p> <p>Length of the slope above the water: - 4 Mts.</p> <p>Drop to the water: - 50 cm.</p> <p>Therefore gradient above the water: - 1:8</p> <p>Length of the slope below the water: - 17 Mts</p> <p>Depth at the end of the underwater slope: - 1.3 Mts</p> <p>Therefore underwater gradient: - 1:13</p> <p>What's at the end of the concrete: - It's uncertain where the concrete ends and the mud starts.</p>		
<p>Quality &amp; surface of vehicle manoeuvring area: - Good compacted coarse chippings then concrete.</p> <p>Amount of trailer manoeuvring space: - Fairly easy.</p> <p>Quality &amp; type of crew boarding facility: - Remove your trailer, pull the boat back into the slip and use the wharf in the slip cutting, or you can use the good adjacent wharf which is part of a winding hole. (Center photo)</p> <p>Height above the water: - 50 cm.</p> <p>Distance for carrying portable boats: - About 10 Mts to the winding hole wharf.</p> <p>Notes: - In summer avoid hire boat turn round day on Saturdays. Have a look for yourself, zoom in on the map above and switch to satellite view.</p>		
<p><b>Directions:</b> - Post code for SatNav: - ST19 9BG ~ urban location.</p> <p>Address: - Countrywide Cruisers (Brewood) Ltd., Wharf Lane, Brewood, Staffordshire. Wharf Lane is a rough track. (Helps with site security).</p> <p>Parking location - vehicle: - On site. Exact location will depend on the space available. (Right photo)</p> <p>Parking spaces available for: - Two or three units.</p> <p>Parking for trailer: - May be parked attached to your car or alongside your car.</p> <p>Parking security: - Open and public but hidden from general public view.</p> <p>Wheel clamps, or other trailer securings are: - Strongly recommended if you have any.</p> <p>Parking period limits: - Negotiable.</p>		

**Suitable Boats: -**

Excellent for: - Residential, long and heavy cabin boats, between about 20ft and 30ft.

Also excellent for: - Canoes, dinghies, small inflatables, other portable boats with paddles; and portable RIB's, heavy dinghies, and other low height boats with engines.

**Local facilities on-site: -**

Toilets  
Water tap  
Rubbish disposal

**Nearby: - Unknown (Options below)**

Launderette  
Chandlery  
Engine repairs  
Calor gas  
Showers  
Elsan disposal  
Overnight moorings  
Petrol  
Nearest bus stop/train station  
Camp site for canoeists  
Supermarket  
Restaurant  
Shops  
Pub with food

**Charges: -**

Boating licence: - You will need a C&RT licence to use the canal. A variety of these are available from: - [www.canalrivertrust.org.uk/boating/licensing](http://www.canalrivertrust.org.uk/boating/licensing). (Some canoeists may have an alternative permit.)

Slipping cost each way: - £10.00 (Please check all prices)

Group & individual canoe launching each way: - Free.

Vehicle Parking: - Per day: - £2.00

Trailer Parking: - Per day: - £2.00

**Navigational Hazards:-**

None known.

The date of the pricing above & photo/s below is: - February 2015.



Index No.	<b>Waterway &amp; Location</b>	Grade
<b>43</b>	Shropshire Union Canal ~ Wolverhampton; Napton Narrowboats (Landing)	<b>1a</b>
<b>Latitude:</b> - N 52.61339°		<b>Longitude:</b> - W 002.14659°
<b>Nearest place:</b> - Wolverhampton		<b>Photos:</b> - Three. 26.02.2015 ~ 14.15 pm
<b>Contact name:</b> - Peter Haines		<b>Region:</b> - Inland England
<b>Phone No:</b> - 01902 789942		<b>Mobile:</b> -
<b>Email:</b> - office@watertravel.plus.com		<b>Fax No:</b> -
<b>Website:</b> - www.napton-marina.co.uk/bases/autherley_junction		
<p><b>Landing Details:</b> - Grade: - 1a                      Compiled by DMS ~ February 2015</p> <p>Description: - A well-worn but adequate concrete wharf changing to red bricks near the lock, and edged all round with concrete bricks. (Left &amp; center photos below) The site is suitable for all users and all purposes.</p> <p>Access and availability: - Private, property of the boatyard and available during working hours by prior arrangement, please phone and book.</p> <p>Drop height to the water: - About 40 cm.</p> <p>Amount of boat manoeuvring space: - Ample.</p> <p>Distance from vehicle to the water: - About 10 Mts.</p> <p>Quality, surface, and description of boat carrying route: - Park for unloading on the cracked concrete area next to the white building, or as close as you can get. Carry your boat to the concrete brick edged wharf and find a suitable space between moored boats. Most are out cruising in summer. (Photos below)</p> <p>Notes: - In summer avoid the hire boat turn round days – Fridays, Saturdays &amp; Mondays.</p>		
<p><b>Directions:</b> - Post code for SatNav: - WV9 5HW ~ large urban location.</p> <p>Address: - Napton Narrowboats, Oxley Moor Road, Wolverhampton, Warwickshire</p> <p>Parking location for vehicle: - On site close to the canal. The open parking area is uneven chippings and grit, with large puddles if wet. (Right photo)</p> <p>Parking spaces available: - Plenty of space.</p> <p>Options for trailers: - May be parked attached to your car or alongside or close to your car.</p> <p>Parking security: - The site is private and staffed and although there are no gates it is well hidden from general public view. There are two parking options, either open site parking or an enclosed high gated compound normally kept locked. (Photos &amp; charges below).</p> <p>Wheel clamps, or other trailer securings are: - Strongly recommended if you have any and use a trailer.</p> <p>Parking period limits: - Negotiable.</p>		
<p><b>Suitable Boats:</b> -</p> <p>Excellent for canoes, kayaks, dinghies, small inflatables, other portable boats with paddles; and also portable RIB's, heavy dinghies, and other low height boats with engines as long as you can carry them.</p>		

**Local facilities on-site: -**

Water tap  
Rubbish disposal  
Toilets

**Nearby: - Unknown. (Options below)**

Pub with food  
Shops  
Supermarket  
Camp site  
Nearest bus stop/train station  
Showers  
Other

**Charges: -**

Boating licence: - You will need a C&RT licence to use the canal. A variety of these are available from: - [www.canalrivertrust.org.uk/boating/licensing](http://www.canalrivertrust.org.uk/boating/licensing) (Some canoeists may have an alternative permit)

Boat launching each way: - Free. (Please check all prices)

Vehicle Parking: - Per day: - £2.00 in open area or £5.00 in secure compound (Right photo below, compound is on the left)

Trailer Parking: - Enquire.

**Navigational Hazards:-**

None known.

The date of the pricing above & photo/s below is: - February 2015





Index No.	<b>Waterway &amp; Location</b> Shropshire Union Canal ~ Chester; Christleton Moorings (Slipway)		Grade <b>2b</b>
<b>Latitude</b> N 53.18034		<b>Longitude:</b> - W 002.83406	
<b>Nearest place:</b> - Chester		<b>Photo's:</b> - Three	
<b>Contact name:</b> - Keith Fairbrother		<b>Region:</b> - Inland England	
<b>Phone No:</b> - 01244 332633		<b>Mobile:</b> - 07778 810187	
<b>Email:</b> - <i>No entries</i>		<b>Fax No (Email):</b> -	
<b>Website:</b> -			
<p><b>Ramp Description:</b> - Grade: - 2b Updated by DMS ~ November 2012</p> <p>Slipway access: - Private, property of 'The Moorings' and available by prior arrangement, please book.</p> <p>Type: - Excellent but concrete slipway dug deep into the bank. (Photo below)</p> <p>Slipway useable width: - 2.9 Mts</p> <p>Length of the slope above the water: - 3.3 Mts</p> <p>Drop to the water: - 60 cm</p> <p>Therefore gradient above the water: - 1:7</p> <p>Length of the slope below the water: - 5 Mts</p> <p>Depth at the end of the underwater slope: - 1 Mtr</p> <p>Therefore underwater gradient: - 1:5</p> <p>Length of any level bed after the slope: - 4 Mts</p> <p>What's at the end of the concrete: - 30 cm sudden drop into mud.</p>			
<p>Surface &amp; quality of vehicle manoeuvring area: - Asphalt, good quality.</p> <p>Amount of trailer manoeuvring space: - Challenging. Only just enough yard to turn round ready for reverse onto the slipway. The reverse is angled, but the visibility is good. However the hedge is very close and is sometimes in need of being cut back with shears to avoid damage to your wing mirror.</p> <p>Type of crew boarding facility &amp; quality: - Remove your trailer, pull the boat back into the slip and use the wharf in the slip cutting. Good crew access on both sides of the slipway.</p> <p>Height above the water: - 60 cm.</p> <p>Notes: - From the information given, remember to consider possible retrieval problems. Have a look for yourself, zoom in on the map above and switch to satellite view.</p>			
<p><b>Directions:</b> - Post code for SatNav: - CH3 7BD ~ Urban location</p> <p>Address: - The Moorings, Rowton Bridge Road, Christleton, Chester.</p> <p>Close to the A41 but DO NOT approach The Moorings from the A41 if you have a long trailer as the hump bridge over the canal is very acute and you may get stuck on top. Instead find the A51 and go down Little Heath Road and straight through Christleton.</p> <p>Parking location - vehicle: - Among the boats parked on the yard, or past the slipway and in the very wide verge alongside moored boats.</p> <p>Parking spaces available for: - One or two units.</p> <p>Parking for trailer: - Probably alongside your car, possibly elsewhere on this site.</p> <p>Parking security: - Enclosed but with no gates, often staffed during working hours. Open to the public but hidden from casual view.</p> <p>Wheel clamps, or other trailer securings are: - Strongly recommended if you have any.</p> <p>Parking period limits: - Negotiable.</p>			



**Ramp Type: -**

Suitability for residential cabin boats, up to about 22 ft : - Adequate. (Unsuitable for larger boats)

For portable rigid inflatables, heavy dinghies, and similar low boats with engines: - Excellent.

For canoes, dinghies, small inflatables, and other portable boats with paddles: - Not permitted.

**Local facilities for: -**

**On-site: -**

Water tap: - At the end of the slipway and working if you're lucky, otherwise downstream, just before the third bridge.

Rubbish disposal: - There are skips on site.

Overnight moorings: - Near the slipway if there is free space, but most likely just across the canal by the bridge.

Petrol & Calor gas: - Over the bridge, turn right at the A41, and in half a mile reach the garage.

Outboard repairs: - By the slipway, Keith Fairbrother has an outboard repair workshop.

Pub with food: - Cheshire Cat, just across the canal from the slipway.

Shops: - There are some shops in Christleton village.

Nearest bus stop/train station: - Christleton village. Catch a bus to Chester for trains.

**Nearby: -**

Petrol & Calor gas: - Over the bridge, turn right at the A41, and in half a mile reach a garage on the right.

Supermarket: - For the nearest supermarket cross the bridge to the A41, turn right and go passed the garage and in another mile you will find Sainsburys just off the large junction and on your left.

Elsan disposal: - C&RT Service station, 10 miles upstream at Calveley.

Toilets & showers: - Also upstream at Calveley.

**Charges: -**

Boating licence: - You will need a C&RT licence to use the canal. A variety of these are available from: - [www.canalrivertrust.org.uk/boating/licensing](http://www.canalrivertrust.org.uk/boating/licensing)

Slipping cost: - £15.00 both ways.

Parking cost: - Included.

Date of the above pricing: - 2014.

**Navigational Hazards:-**

None known.

The date of the photo/s below is: - The date of the photo/s below is: - 2008

